

Artesia, NM 88210 UNITED STATES
DEPARTMENT OF THE INTERIOR
GEOLOGICAL SURVEY

SUBMIT IN TRIPLICATE*

(Other instructions on
reverse side)Form approved.
Budget Bureau No. 42-R1425.

c/SF

30-005-62009

5. LEASE DESIGNATION AND SERIAL NO.
NM-17202

6. IF INDIAN, ALLOTTEE OR TRIBE NAME

7. UNIT AGREEMENT NAME

8. FARM OR LEASE NAME
Short "RM" Federal

9. WELL NO.
2

10. FIELD AND POOL, OR WILDCAT
Pecos Slope Abo

11. SEC., T., R., M., OR BLK.
AND SURVEY OR AREA
Sec. 27-T7S-R25E

12. COUNTY OR PARISH
Chaves

13. STATE
NM

1. TYPE OF WORK
DRILL ☒ DEEPEN ☐ PLUG BACK ☐

2. TYPE OF WELL
OIL WELL ☐ GAS WELL ☒ OTHER ☐

3. NAME OF OPERATOR
Yates Petroleum Corporation

4. ADDRESS OF OPERATOR
207 S. 4th, Artesia, New Mexico 88210

5. LOCATION OF WELL (Report location clearly and in accordance with any State requirements.)
At surface
660' FSL and 1980' FEL
At proposed prod. zone
same

6. DISTANCE IN MILES AND DIRECTION FROM NEAREST TOWN OR POST OFFICE
Approximately 22 miles NNE of Roswell, NM.

7. DISTANCE FROM PROPOSED*
LOCATION TO NEAREST
PROPERTY OR LEASE LINE, FT.
(Also to nearest drilg. unit line, if any) 660'

8. DISTANCE FROM PROPOSED LOCATION*
TO NEAREST WELL, DRILLING, COMPLETED,
OR APPLIED FOR, ON THIS LEASE, FT.

9. NO. OF ACRES IN LEASE
1080

10. NO. OF ACRES ASSIGNED
TO THIS WELL
160

11. PROPOSED DEPTH
4125'

12. ROTARY OR CABLE TOOLS
Rotary

13. ELEVATIONS (Show whether DF, RT, GR, etc.)
3599.4' GL

14. APPROX. DATE WORK WILL START*
ASAP

PROPOSED CASING AND CEMENTING PROGRAM

SIZE OF HOLE	SIZE OF CASING	WEIGHT PER FOOT	SETTING DEPTH	QUANTITY OF CEMENT
14 3/4"	10 3/4"	40.5# J-55	860'	750 sx circulated
7 7/8"	4 1/2"	9.5# J-55	TD	350 sx

We propose to drill and test the Abo and intermediate formations. Approximately 860' of surface casing will be set and cement circulated to shut off gravel and caving. If needed (lost circulation) 8 5/8" intermediate casing will be run to 1500' and cemented with enough cement calculated to tie back into the surface casing. If commercial, production casing will be run and cemented with adequate cover, perforated and stimulated as needed for production.

MUD PROGRAM: FW gel/LCM to 860', Brine to 3200', Brine/KCL water to TD.

BOP PROGRAM: BOP's will be installed at the offset and tested daily.

GAS NOT DEDICATED.

IN ABOVE SPACE DESCRIBE PROPOSED PROGRAM: If proposal is to deepen or plug back, give data on present productive zone and proposed new productive zone. If proposal is to drill or deepen directionally, give pertinent data on subsurface locations and measured and true vertical depths. Give blowout preventer program, if any.

24. SIGNED Ken Beardsley TITLE Regulatory Agent DATE 5/2/83
(This space for Federal or State office use)

PERMIT NO. _____ APPROVAL DATE _____

APPROVED BY A. P. Lopez TITLE Acting Asst. District Manager for Injunctive DATE 5/18/83

CONDITIONS OF APPROVAL, IF ANY:

NEW MEXICO OIL CONSERVATION COMMISSION
WELL LOCATION AND ACREAGE DEDICATION PLAT

Form C-102
Supersedes C-128
Effective 1-1-65

All distances must be from the outer boundaries of the Section.

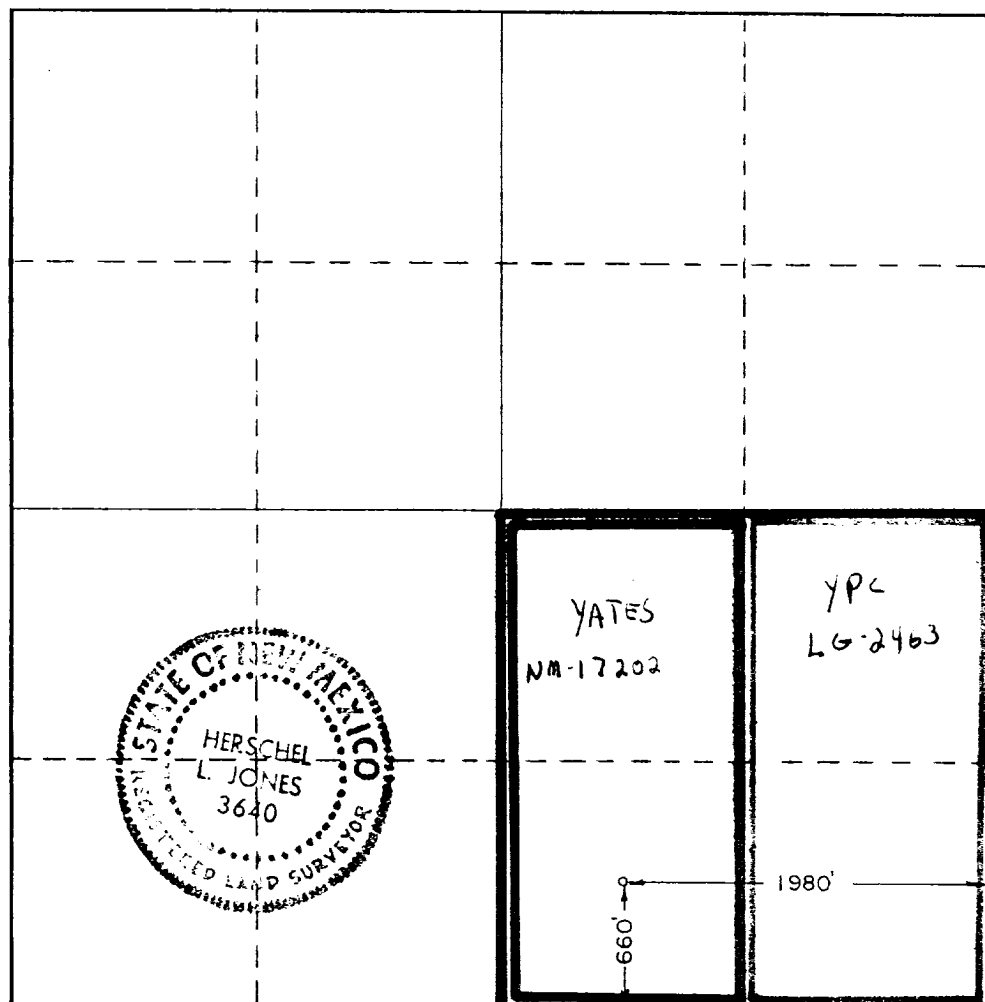
Operator YATES PETROLEUM CORPORATION			Lease SHORT "RM" FEDERAL		Well No. 2
Grid Letter 0	Section 27	Township 7 South	Range 25 East	County Chaves	
Actual Footage Location of Well: 660 feet from the South line and 1980 feet from the East line					
Ground Level Elev. 3599.4	Producing Formation Abo	Pool Pecos Slope Abo		Dedicated Acreage: 160 Acres	

- Outline the acreage dedicated to the subject well by colored pencil or hachure marks on the plat below.
- If more than one lease is dedicated to the well, outline each and identify the ownership thereof (both as to working interest and royalty).
- If more than one lease of different ownership is dedicated to the well, have the interests of all owners been consolidated by communitization, unitization, force-pooling, etc?

☐ Yes ☐ No If answer is "yes," type of consolidation _____

If answer is "no," list the owners and tract descriptions which have actually been consolidated. (Use reverse side of this form if necessary.) _____

No allowable will be assigned to the well until all interests have been consolidated (by communitization, unitization, forced-pooling, or otherwise) or until a non-standard unit, eliminating such interests, has been approved by the Commission.



CERTIFICATION

I hereby certify that the information contained herein is true and complete to the best of my knowledge and belief.

Ken Beardemphl
Name

Ken Beardemphl
Position

Regulatory Agent
Company

Yates Petroleum Corp.
Date

5/2/83

I hereby certify that the well location shown on this plat was plotted from field notes of actual surveys made by me or under my supervision, and that the same is true and correct to the best of my knowledge and belief.

Date Surveyed
4/27/83

Registered Professional Engineer and/or Land Surveyor

Herschel L. Jones
Certificate No.
3640

0 330 660 990 1320 1650 1980 2310 2640 2000 1500 1000 500 0

YATES PETROLEUM CORPORATION
Short "RM" Federal #2
660' FEL & 1980' FEL
Section 27-T7S-R25E

In conjunction with Form 9-331C, Application for Permit to Drill subject well, Yates Petroleum Corporation submits the following ten items of pertinent information in accordance with USGS requirements.

1. The geologic surface formation is quaternary alluvium.

2. The estimated tops of geologic markers are as follows:

San Andres	427'
Glorieta	1435'
Fullerton	2869'
Abo	3551'
TD	4125'

3. The estimated depths at which anticipated water, oil or gas formations are expected to be encountered:

Water: 275'-300'

Oil or Gas: Abo 3580'

4. Proposed Casing Program: See Form 9-331C.

5. Pressure Control Equipment: See Form 9-331C.

6. Mud Program: See Form 9-331C.

7. Auxiliary Equipment: Kelly Cock; pit level indicators and flow sensor equipment; sub with full-opening valve on floor, drill pipe connection.

8. Testing, Logging and Coring Program:

Samples: Surface casing to TD.

DST's: As warranted.

Coring: None.

Logging: CNL-FDC TD to csg w/GR-CNL to surface, DLL from TD to csg.

9. No abnormal pressures or temperatures are anticipated.

10. Anticipated starting date: As soon as possible after approval.

YPC
Short "RM" Federal #2
660' FSL & 1980' FEL
Sec. 27-T7S-R25E
Chaves County, NM
EXHIBIT A

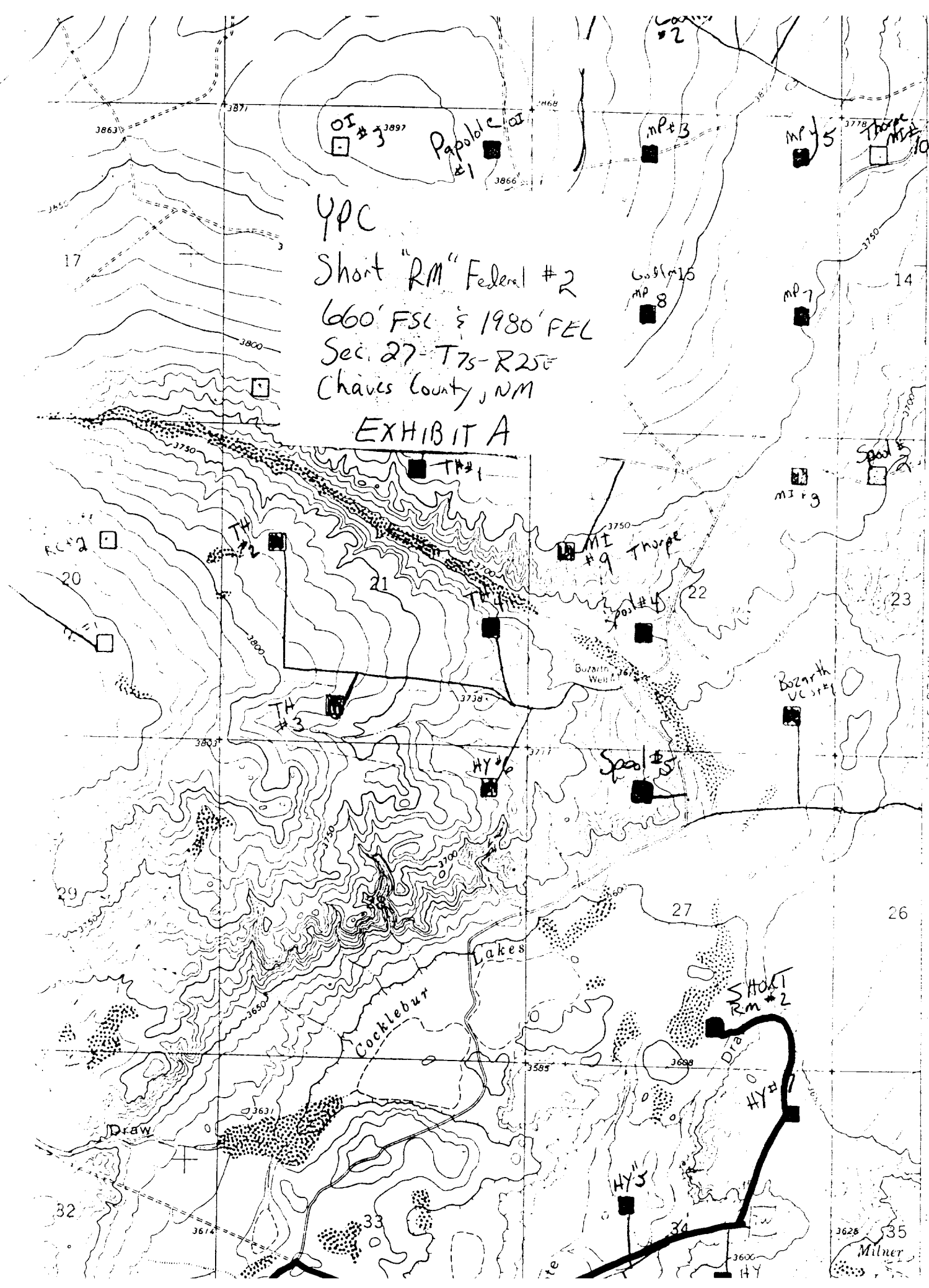
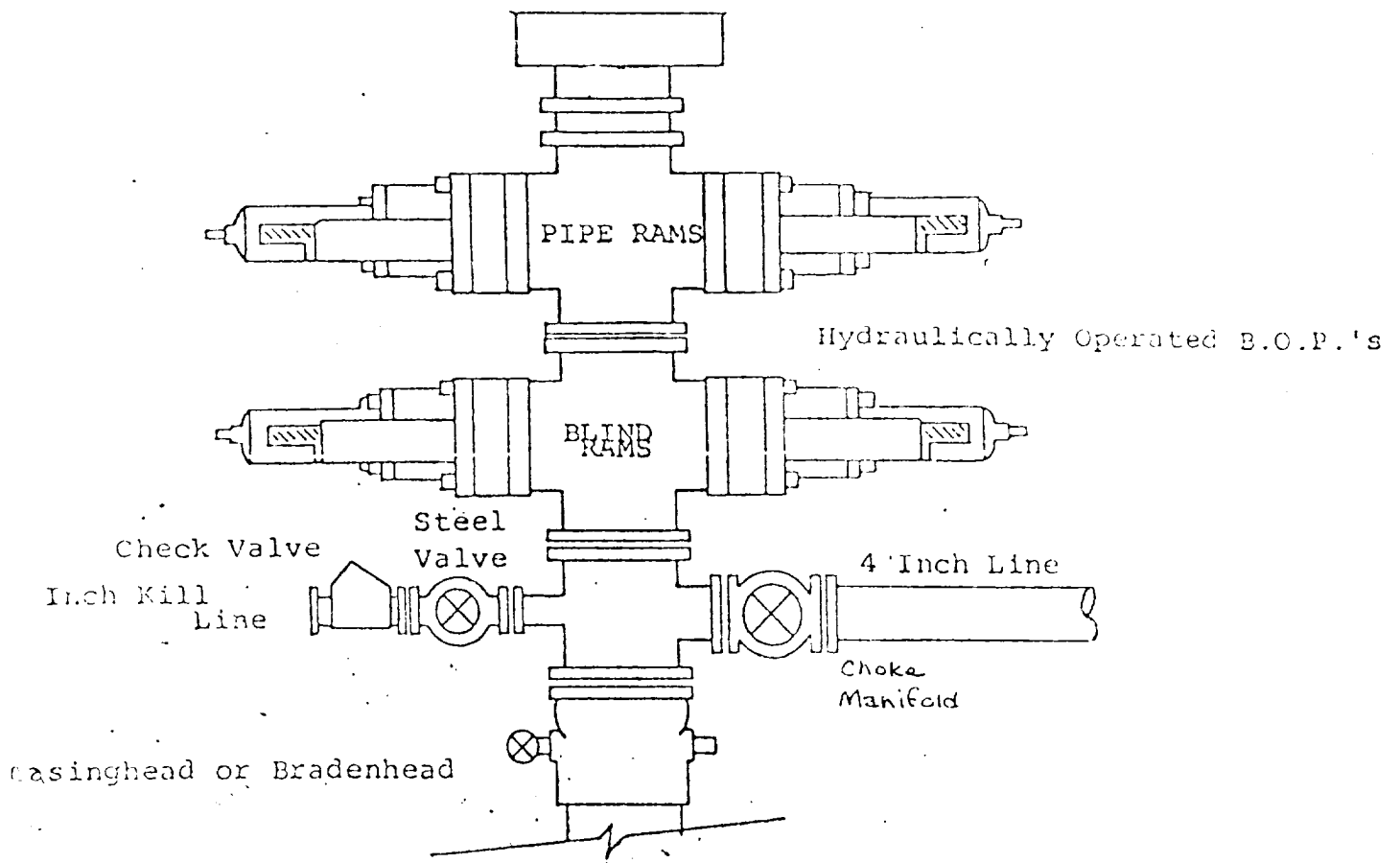


EXHIBIT B

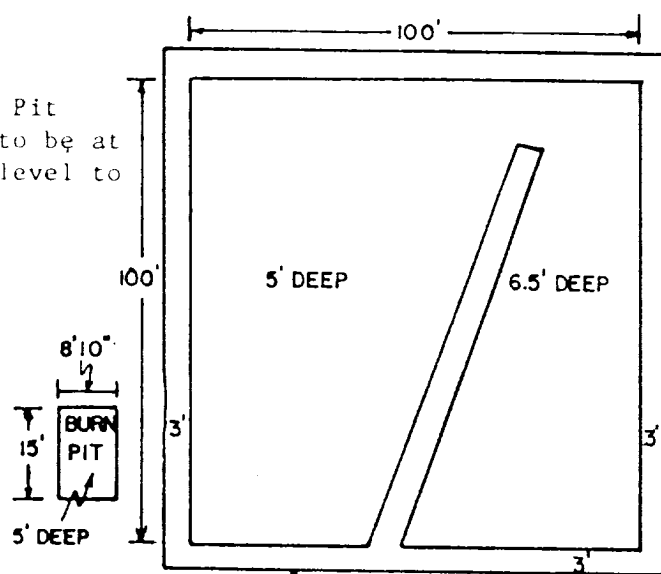
BOP DIAGRAM



YATES PETROLEUM CORP.

Exhibit C

Reserve Pit
bottom to be at
ground level to
left.



NOTE:

Inside walls must be as
high and wide as outer
walls of pit.

