

All distances must be from the outer boundaries of the Section.

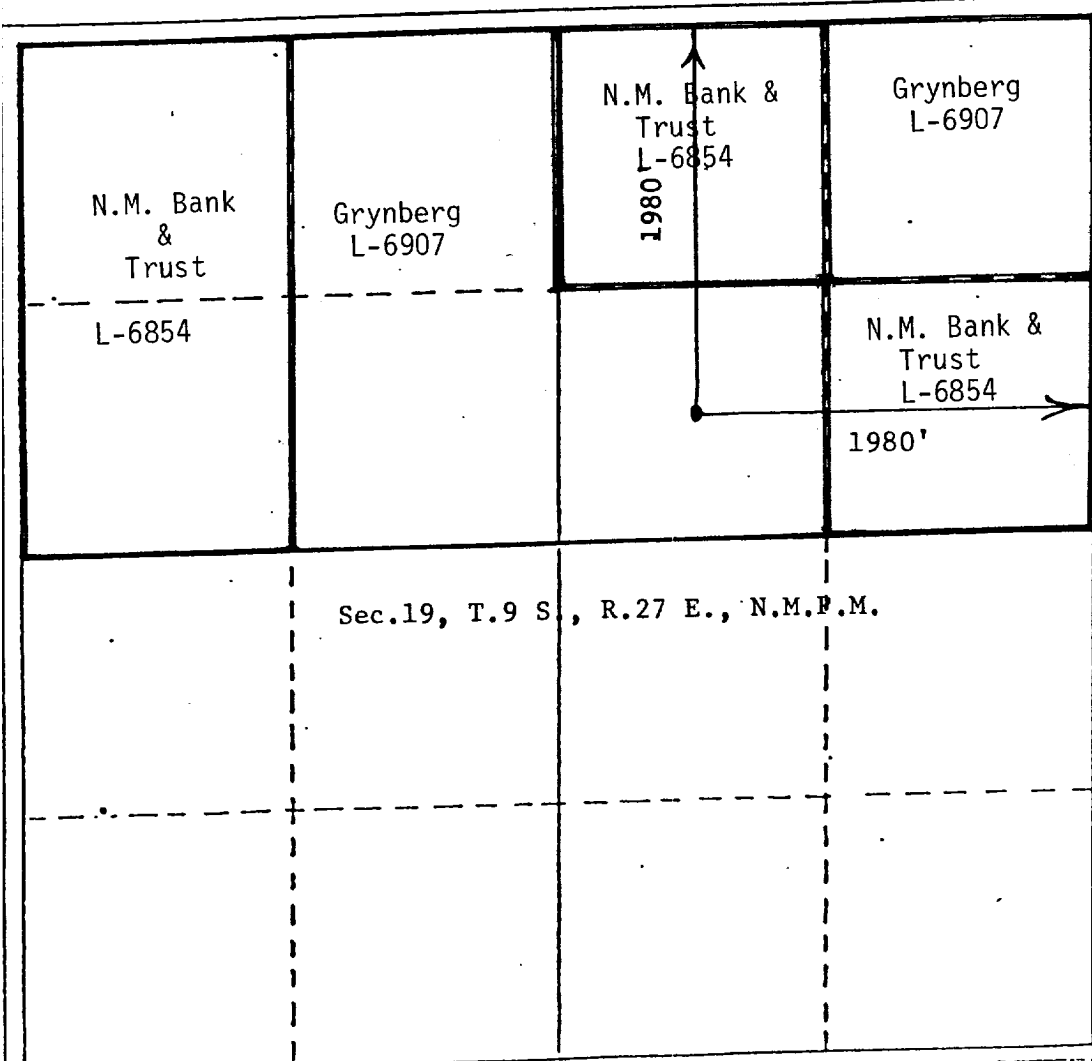
Operator Elk Oil Co.		Lease Viking State Com		Well No. #2
Unit Letter G	Section 19	Township 9 South	Range 27 East	County Chaves
Actual Footage Location of Well: 1980 feet from the North line and 1980 feet from the East line				
Ground Level Elev. 3808	Producing Formation Penn	Pool Undesignated	Dedicated Acreage: 320 Acres	

1. Outline the acreage dedicated to the subject well by colored pencil or hatchure marks on the plat below.
2. If more than one lease is dedicated to the well, outline each and identify the ownership thereof (both as to working interest and royalty).
3. If more than one lease of different ownership is dedicated to the well, have the interests of all owners been consolidated by communitization, unitization, force-pooling, etc?

☒ Yes ☐ No If answer is "yes" type of consolidation Communitization

If answer is "no," list the owners and tract descriptions which have actually been consolidated. (Use reverse side of this form if necessary.)

No allowable will be assigned to the well until all interests have been consolidated (by communitization, unitization, forced-pooling, or otherwise) or until a non-standard unit, eliminating such interests, has been approved by the Division.



CERTIFICATION

I hereby certify that the information contained herein is true and complete to the best of my knowledge and belief.

Name Joseph J. Kelly

Position President

Company Elk Oil Company

Date May 24, 1983

I hereby certify that the well location shown on this plat was plotted from field notes of actual surveys made by me or under my supervision, and that the same is true and correct to the best of my knowledge and belief.

JOHN D. JACQUES
Surveyor
May 20, 1983
Registered Professional Engineer
and/or Professional Surveyor
John D. Jacques, P.E. & L.S.
Certificate No. 6290