

UNITED STATES
DEPARTMENT OF THE INTERIOR
GEOLOGICAL SURVEY
NEW OIL CONS. COMMISSION
Drawer DD
Artesia, NM 88210

APPLICATION FOR PERMIT TO DRILL, DEEPEN, OR PLUG BACK

1a. TYPE OF WORK

DRILL ☒DEEPEN ☐PLUG BACK ☐

b. TYPE OF WELL

OIL
WELL ☒GAS
WELL ☐

OTHER

SINGLE
ZONE ☒MULTIPLE
ZONE ☐

2. NAME OF OPERATOR

Pearson-Sibert Oil Co. of Texas ✓

3. ADDRESS OF OPERATOR

901 W. Missouri Ave., Midland, Texas 79701

4. LOCATION OF WELL (Report location clearly and in accordance with any State requirements.*)

At surface

2310' FNL & 660' FWL Section 26, T-5-S, R-28-E

At proposed prod. zone Same

14. DISTANCE IN MILES AND DIRECTION FROM NEAREST TOWN OR POST OFFICE*

11 Miles West of Kenna

15. DISTANCE FROM PROPOSED*

LOCATION TO NEAREST

PROPERTY OR LEASE LINE, FT.

(Also to nearest drlg. unit line, if any)

2640' FSL

16. NO. OF ACRES IN LEASE

2560

17. NO. OF ACRES ASSIGNED
TO THIS WELL

40

18. DISTANCE FROM PROPOSED LOCATION*

TO NEAREST WELL, DRILLING, COMPLETED,

OR APPLIED FOR, ON THIS LEASE, FT.

Not Applicable

19. PROPOSED DEPTH

2400'

20. ROTARY OR CABLE TOOLS

Rotary

21. ELEVATIONS (Show whether DF, RT, GR, etc.)

4223'

22. APPROX. DATE WORK WILL START*

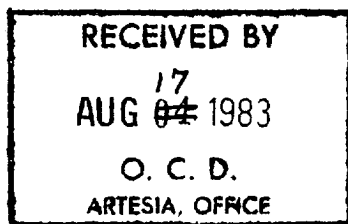
8-26-83

23.

PROPOSED CASING AND CEMENTING PROGRAM

SIZE OF HOLE	SIZE OF CASING	WEIGHT PER FOOT	SETTING DEPTH	QUANTITY OF CEMENT
17-1/2"	13-3/8"	48#	500'	400 sx to circulate
11-1/4"	8-5/8"	24#	2000'	500 sx CIRCULATE

Will Drill 7-7/8" Hole F/2000-2400' & Complete O.H.



RECEIVED
AUG 3 9 40 AM '83
BUREAU OF LAND MANAGEMENT
ROSSELL DISTRICT

IN ABOVE SPACE DESCRIBE PROPOSED PROGRAM: If proposal is to deepen or plug back, give data on present productive zone and proposed new productive zone. If proposal is to drill or deepen directionally, give pertinent data on subsurface locations and measured and true vertical depths. Give blowout preventer program, if any.

24.

SIGNED

Robert D. Letting

TITLE Vice President

DATE 8-1-83

(This space for Federal or State office use)

PERMIT NO.

APPROVAL DATE

APPROVED BY

A. A. Lopez

TITLE

DATE

8/1/83

CONDITIONS OF APPROVAL, IF ANY:

*See Instructions On Reverse Side

APPROVAL SUBJECT TO
GENERAL REQUIREMENTS AND
SPECIAL STIPULATIONS
ATTACHED

Instructions

General: This form is designed for submitting proposals to perform certain well operations, as indicated, on all types of lands and leases for appropriate action by either a Federal or a State agency, or both, pursuant to applicable Federal and/or State laws and regulations. Any necessary special instructions concerning the use of this form and the number of copies to be submitted, particularly with regard to local, area, or regional procedures and practices, either are shown below or will be issued by, or may be obtained from, the local Federal and/or State office.

Item 1: If the proposal is to redrill to the same reservoir at a different subsurface location or to a new reservoir, use this form with appropriate notations. Consult applicable State or Federal regulations concerning subsequent work proposals or reports on the well.

Item 4: If there are no applicable State requirements, locations on Federal or Indian land should be described in accordance with Federal requirements. Consult local State or Federal office for specific instructions.

Item 14: Needed only when location of well cannot readily be found by road from the land or lease description. A plat, or plats, separate or on this reverse side, showing the roads to, and the surveyed location of, the well, and any other required information, should be furnished when required by Federal or State agency offices.

Items 15 and 18: If well is to be, or has been directionally drilled, give distances for subsurface location of hole in any present or objective production zone.

Item 22: Consult applicable Federal or State regulations, or appropriate officials, concerning approval of the proposal before operations are started.

NEW MEXICO OIL CONSERVATION COMMISSION
WELL LOCATION AND ACREAGE DEDICATION PLAT

Form C-102
Supersedes C-128
Effective 1-1-65

All distances must be from the outer boundaries of the Section.

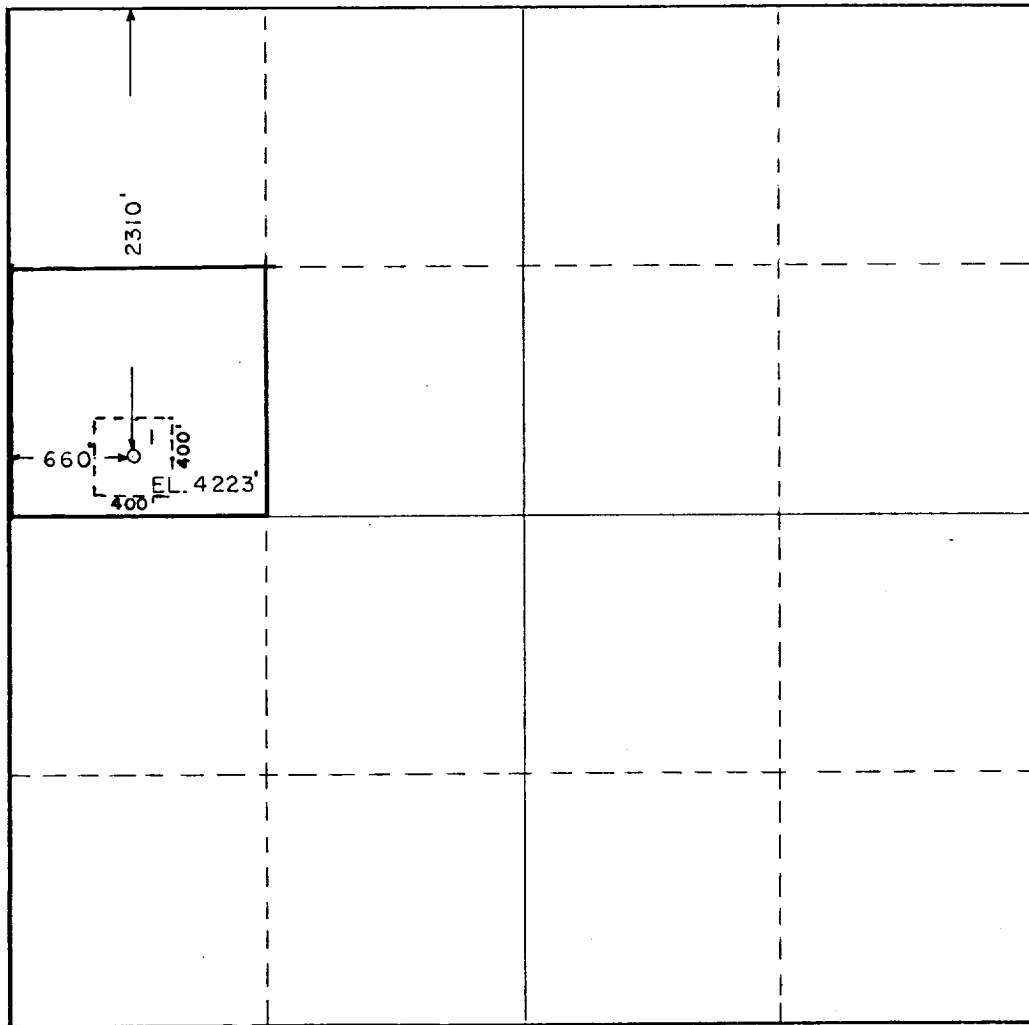
Operator Pearson-Sibert Oil Co. of Texas			Lease ROBERT-FEDERAL		Well No. 1
Unit Letter E	Section 26	Township 5-S	Range 28-E	County Chaves	
Actual Footage Location of Well: 2310 feet from the North line and 660 feet from the West line					
Ground Level Elev. 4223'	Producing Formation San Andres		Pool Wildcat - San Andres	Dedicated Acreage: 40 Acres	

1. Outline the acreage dedicated to the subject well by colored pencil or hachure marks on the plat below.
2. If more than one lease is dedicated to the well, outline each and identify the ownership thereof (both as to working interest and royalty).
3. If more than one lease of different ownership is dedicated to the well, have the interests of all owners been consolidated by communitization, unitization, force-pooling, etc?

☐ Yes ☐ No If answer is "yes," type of consolidation _____

If answer is "no," list the owners and tract descriptions which have actually been consolidated. (Use reverse side of this form if necessary.) _____

No allowable will be assigned to the well until all interests have been consolidated (by communitization, unitization, forced-pooling, or otherwise) or until a non-standard unit, eliminating such interests, has been approved by the Commission.



CERTIFICATION

I hereby certify that the information contained herein is true and complete to the best of my knowledge and belief.

Robert D. Fitting
Name
Robert D. Fitting

Position
Vice President

Company **Pearson-Sibert Oil Co. of Texas**

Date
8-1-83

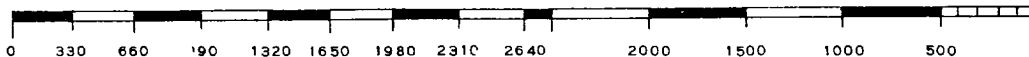
I hereby certify that the well location shown on this plat was plotted from field notes of actual surveys made by me or under my supervision, and that the same is true and correct to the best of my knowledge and belief.

June 14, 1983

Date Surveyed

Registered Professional Engineer and/or Land Surveyor

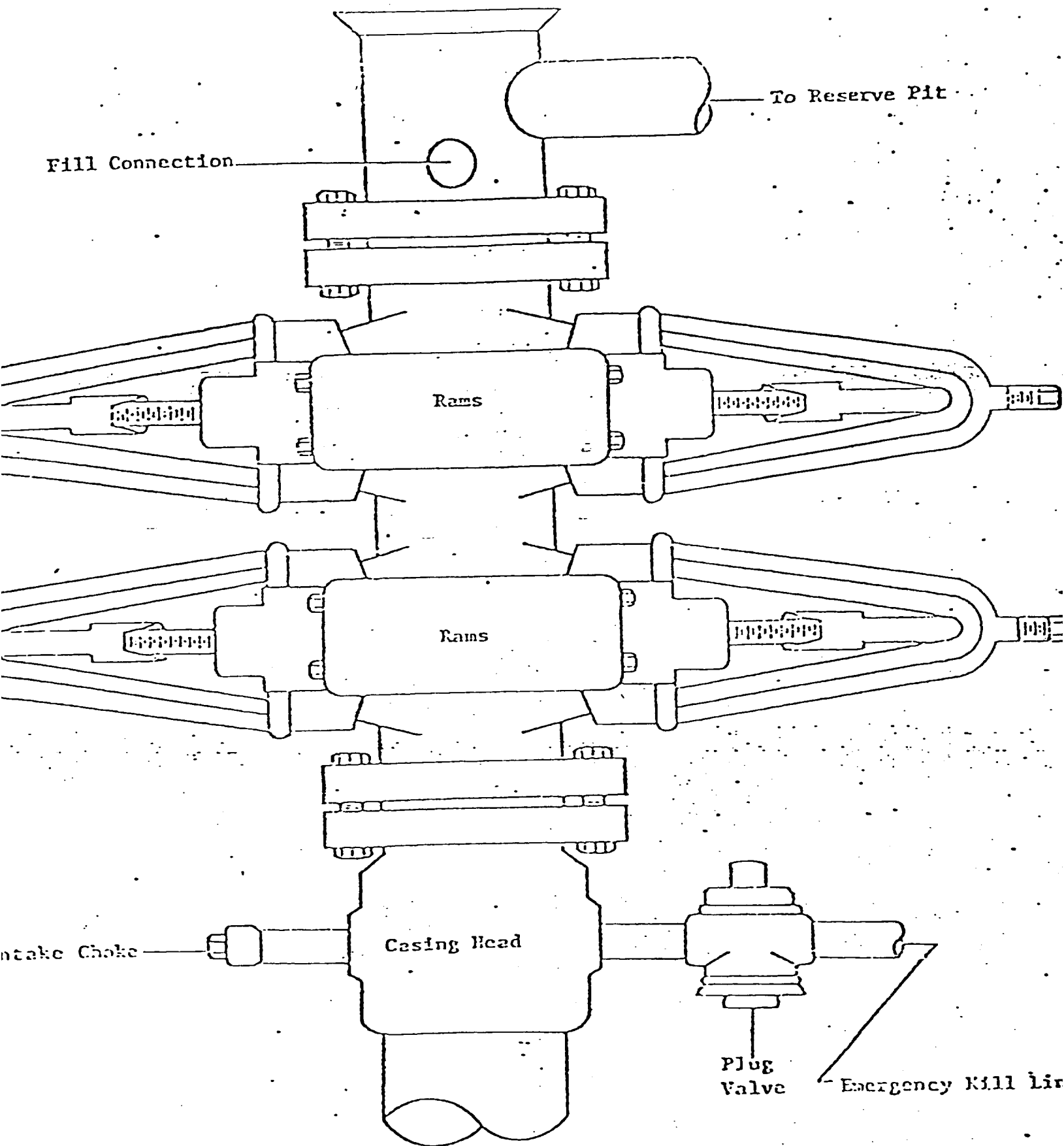
Mark E. Shoup
Certificate No. **2189**

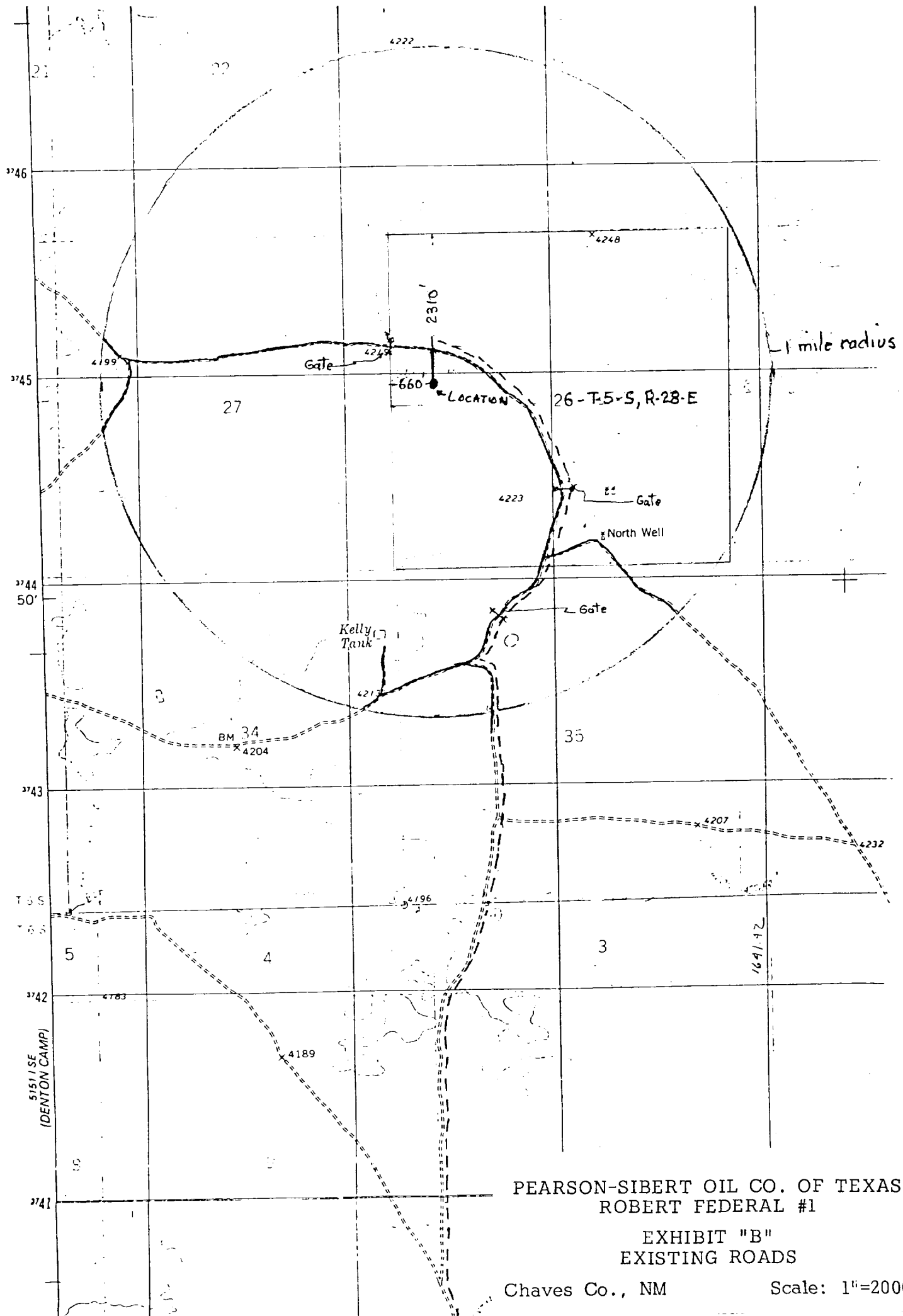


APPLICATION TO DRILL
PEARSON-SIBERT OIL CO. OF TEXAS
ROBERT FEDERAL, WELL NO. 1
CHAVES COUNTY, NEW MEXICO

1. Location: 2310' FNL & 660' FWL Section 26, T-5-S, R-28-E, Chaves County, New Mexico
2. Elevation Above Sea Level: 4223'
3. Geologic Name of Surface Formation: Permian
4. Drilling Tools & Associated Equipment: Rotary drilling tools will be used with adequate mud as a circulation medium. Mud logger will be used from 1600' to total depth.
5. Proposed Drilling Depth: 2400'
6. Estimated Geological Marker Tops: San Andres - 2065'
7. Mineral Bearing Formation: San Andres - 2000' to 2300' possible oil and gas
8. Casing Program: See Form 9-331C
9. Setting Depth of Casing & Cement: See Form 9-331C
10. Pressure Control Equipment: Blowout preventer to consist of at least double ram-rated to 3000 psi
11. Proposed Circulation Medium: Mud will be used as circulation medium
0 to 500' spud and native mud
500' to 2000' native mud with adequate quality to set casing
2000' to total depth salt gel
12. Testing, Logging & Coring Programs:
 - (a) Testing: No drillstem tests anticipated
 - (b) Logging: Mud logger on well from 1600' to total depth
Gamma Ray Neutron from surface to total depth
 - (c) Coring: None anticipated
13. Potential Hazards: No abnormal pressure, temperature or hydrogen sulphide zones anticipated
14. Anticipated Starting Date: Drilling operations will commence approximately August 26, 1983

FIGURE 1





PEARSON-SIBERT OIL CO. OF TEXAS
ROBERT FEDERAL #1

EXHIBIT "B"
EXISTING ROADS

Chaves Co., NM

Scale: 1"=2000