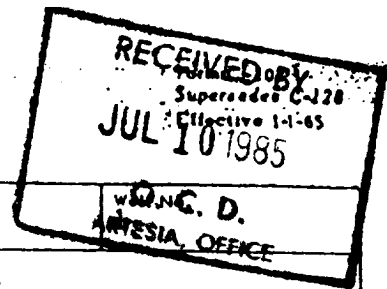


MEXICO OIL CONSERVATION COMMISSION
WELL LOCATION AND ACREAGE DEDICATION AT

All distances must be from the outer boundaries of the Section.



Operator Stevens Operating Company		Lease Red Lake Ridge		
Section Letter C	Section 21	Township 8 South	Range 29 East	County Chaves County

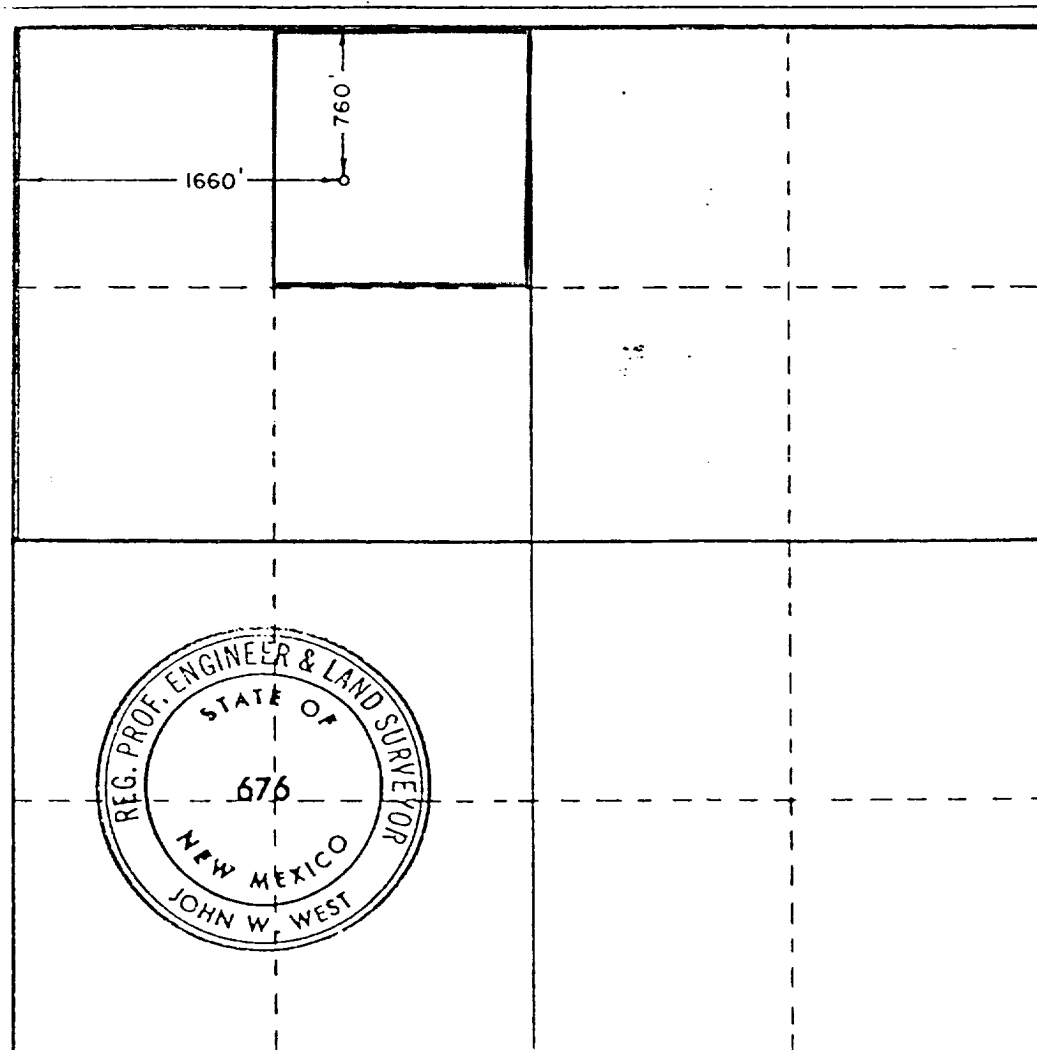
Actual Footage Location of Well:				
760 feet from the North line and		1660 feet from the West line		
Ground Level Elev. 3958.0	Producing Formation San Andres	Pool Red Lake Ridge-San Andres	Dedicated Acreage: 40 Acres	

1. Outline the acreage dedicated to the subject well by colored pencil or hachure marks on the plat below.
2. If more than one lease is dedicated to the well, outline each and identify the ownership thereof (both as to working interest and royalty).
3. If more than one lease of different ownership is dedicated to the well, have the interests of all owners been consolidated by communitization, unitization, force-pooling, etc?

☐ Yes ☐ No If answer is "yes," type of consolidation _____

If answer is "no," list the owners and tract descriptions which have actually been consolidated. (Use reverse side of this form if necessary.) _____

No allowable will be assigned to the well until all interests have been consolidated (by communitization, unitization, forced-pooling, or otherwise) or until a non-standard unit, eliminating such interests, has been approved by the Commission.



CERTIFICATION

I hereby certify that the information contained herein is true and complete to the best of my knowledge and belief.

Name
Pat Thompson
Position
Production Controller
Company
Stevens Operating Corporation

Date
7/9/85

I hereby certify that the well location shown on this plat was plotted from field notes of actual surveys made by me or under my supervision, and that the same is true and correct to the best of my knowledge and belief.

Date Surveyed
August 3, 1983

Registered Professional Engineer and/or Land Surveyor

John W. West

Certificate No. **JOHN W. WEST, 676**
RONALD J. EIDSON, 3239