

UNITED STATES
DEPARTMENT OF THE INTERIOR

GEOLOGICAL SURVEY

APPLICATION FOR PERMIT TO DRILL, DEEPEN, OR PLUG BACK

1a. TYPE OF WORK

DRILL ☒DEEPEN ☐PLUG BACK ☐

b. TYPE OF WELL

OIL
WELL ☐GAS
WELL ☒OTHER ☐

2. NAME OF OPERATOR

McClellan Oil Corporation

3. ADDRESS OF OPERATOR

P. O. Drawer 730, Roswell, New Mexico 88202

4. LOCATION OF WELL (Report location clearly and in accordance with any State requirements.)

At surface

660' FNL & 1650' FEL

At proposed prod. zone

14. DISTANCE IN MILES AND DIRECTION FROM NEAREST TOWN OR POST OFFICE*

15 miles Northeast of Roswell, New Mexico

15. DISTANCE FROM PROPOSED*

LOCATION TO NEAREST
PROPERTY OR LEASE LINE, FT.
(Also to nearest drlg. unit line, if any)

660'

18. DISTANCE FROM PROPOSED LOCATION*

TO NEAREST WELL, DRILLING, COMPLETED,
OR APPLIED FOR, ON THIS LEASE, FT.

7920'

16. NO. OF ACRES IN LEASE

872.16 MOL

19. PROPOSED DEPTH

4600'

17. NO. OF ACRES ASSIGNED
TO THIS WELL

160

20. ROTARY OR CABLE TOOLS

Rotary

21. ELEVATIONS (Show whether DF, RT, GR, etc.)

3702' G.L.

22. APPROX. DATE WORK WILL START*

September 20, 1983

23.

PROPOSED CASING AND CEMENTING PROGRAM

SIZE OF HOLE	SIZE OF CASING	WEIGHT PER FOOT	SETTING DEPTH	QUANTITY OF CEMENT
12-1/4"	8-5/8"	24#	900'	500 sx Circulate
7-7/8"	4-1/2"	10.5#	4600'	350 sx

Propose to drill to approximately 4600' to test the Abo formation. If production is indicated, will set casing and attempt completion.

Estimated Geologic Tops: San Andres: 682'
Glorieta : 1752'
Tubb : 3262'
Abo : 4012'

Mud Program: Will drill to top of Abo with native mud. Will mud-up with salt gel, 40 visc, 20 cc water loss and 9.8 lb/gal.

Gas is dedicated.

IN ABOVE SPACE DESCRIBE PROPOSED PROGRAM: If proposal is to deepen or plug back, give data on present productive zone and proposed new productive zone. If proposal is to drill or deepen directionally, give pertinent data on subsurface locations and measured and true vertical depths. Give blowout preventer program, if any.

24.

SIGNED

Paul Raydale

TITLE Operations Manager

DATE August 15, 1983

(This space for Federal or State office use)

PERMIT NO.

APPROVAL DATE

APPROVED BY

G. G. Lopez

TITLE

DATE 8/30/83

CONDITIONS OF APPROVAL, IF ANY:

*See Instructions On Reverse Side

APPROVAL SUBJECT TO
GENERAL REQUIREMENTS AND
SPECIAL STIPULATIONS
ATTACHED

OIL CONSERVATION DIVISION

STATE OF NEW MEXICO
ENERGY AND MINERALS DEPARTMENTP. O. BOX 2088
SANTA FE, NEW MEXICO 87501Form C-102
Revised 10-1-77

All distances must be from the outer boundaries of the Section.

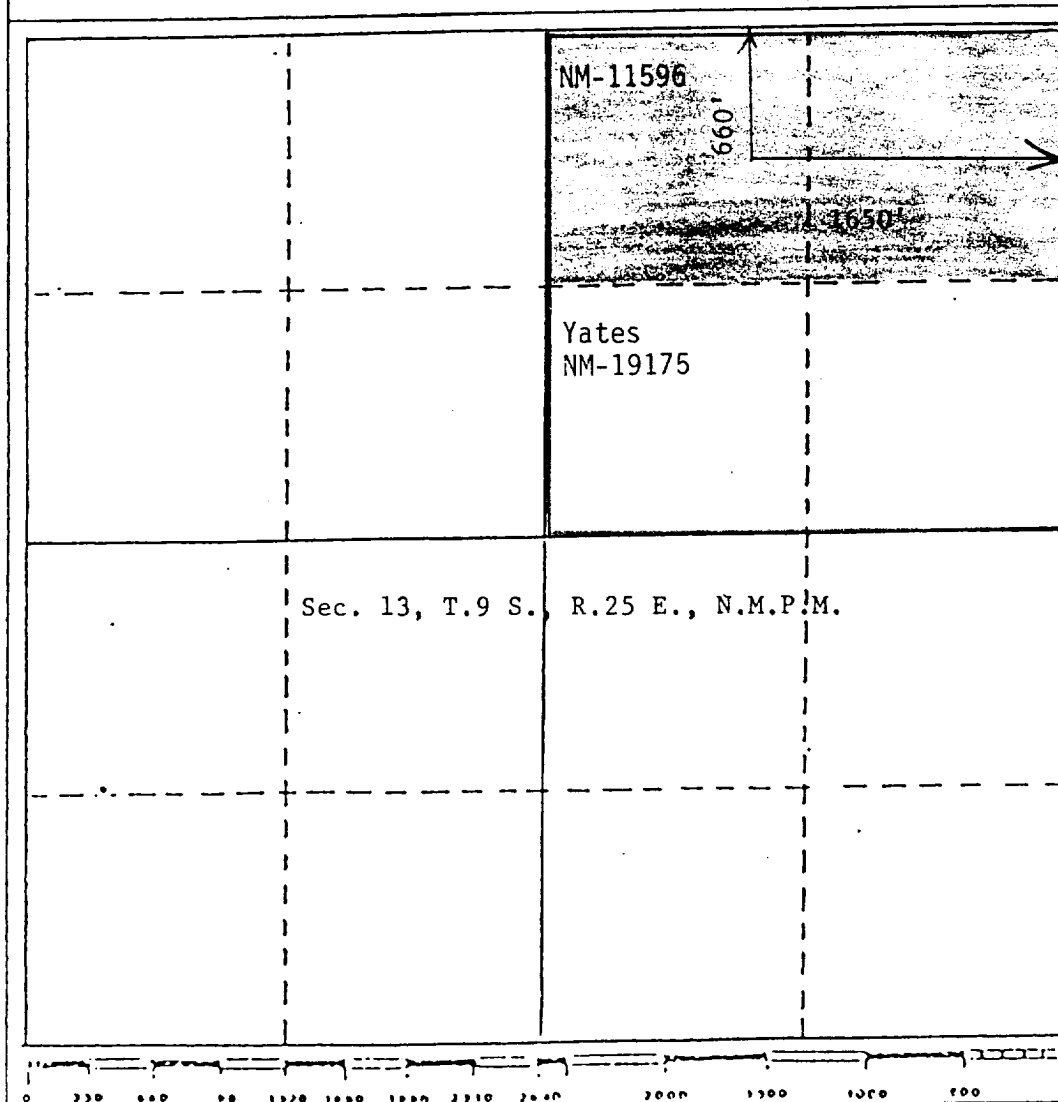
Operator McClellan Oil Corp.		Lease P-J Federal <i>Cow</i>		Well No. #2
Unit Letter B	Section 13	Township 9 South	Range 25 East	County Chaves
Actual Postage Location of Well: 660 feet from the North line and 1650 feet from the East line				
Ground Level Elev. 3702	Producing Formation Abo	Pool South Pecos Slope		Dedicated Acreage: 160 Acres

1. Outline the acreage dedicated to the subject well by colored pencil or hachure marks on the plat below.
2. If more than one lease is dedicated to the well, outline each and identify the ownership thereof (both as to working interest and royalty).
3. If more than one lease of different ownership is dedicated to the well, have the interests of all owners been consolidated by communitization, unitization, force-pooling, etc?

☒ Yes ☐ No If answer is "yes," type of consolidation Communitization

If answer is "no," list the owners and tract descriptions which have actually been consolidated. (Use reverse side of this form if necessary.)

No allowable will be assigned to the well until all interests have been consolidated (by communitization, unitization, force-pooling, or otherwise) or until a non-standard unit, eliminating such interests, has been approved by the Division.



CERTIFICATION

I hereby certify that the information contained herein is true and complete to the best of my knowledge and belief.

Mark McClellan

Name

Mark McClellan

Position

Geologist

Company

McClellan Oil Corporation

Date

August 16, 1983

I hereby certify that the well location shown on this plat was plotted from field notes of actual surveys made by me or under my supervision, and that the same is true and correct to the best of my knowledge and belief.

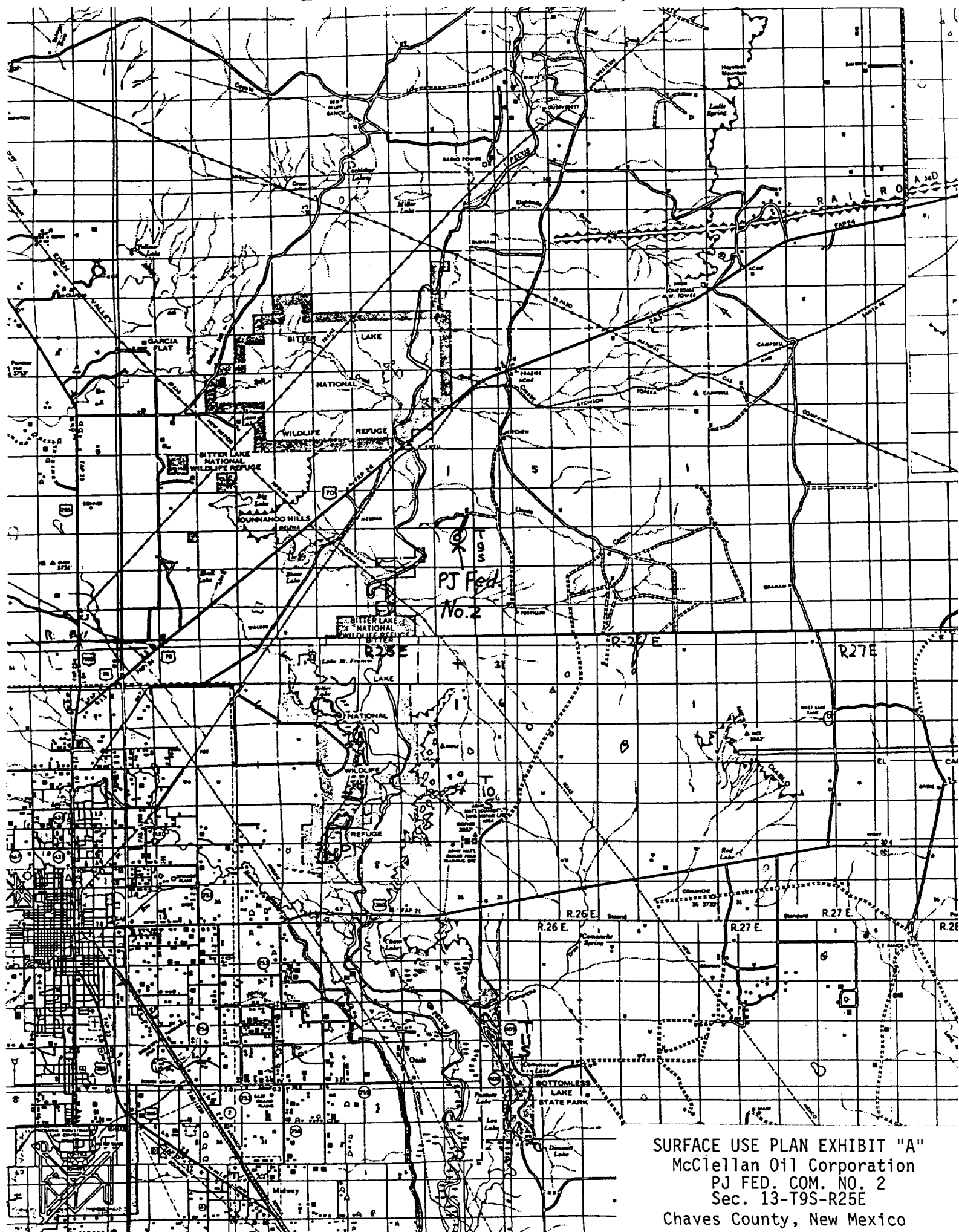
JOHN D. JAQUES
NEW MEXICO
6290
August 12, 1983
REGISTERED PROFESSIONAL SURVEYOR
AND U.S. DEPT. OF THE INTERIOR
JOHN D. JAQUES, P.E. & L.S.
Certificate No. 6290

REQUIREMENTS
(NTL-6)

1. Location: Sec. 13-T9S-R25E; 660' FNL & 1650' FEL
2. Elevation: 3702' G.L.
3. Geologic name of surface formation: See Archaeological Report
4. Type of drilling rig and associated equipment: Rotary
5. Proposed drilling depth and objective formation: 4600'; Abo
6. Estimated tops of geologic markers:

Yates _____	San Andres <u>690'</u>	Abo <u>4032'</u>
7-Rivers _____	Glorieta <u>1835'</u>	Wolfcamp _____
Queen _____	Tubb <u>3270'</u>	_____
7. Estimated depths of any oil, water, or gas: 4032' - 4600', possible gas
- 8-9. Proposed casing program:

<u>8-5/8"</u> @ <u>900'</u> Grade <u>J-55</u> Wt. <u>24</u> Type Cement <u>Class "C" (Circulated)</u>
<u>4-1/2"</u> @ <u>4600'</u> Grade <u>J-55</u> Wt. <u>10.5</u> Type Cement <u>Class "C"</u>
_____ " @ _____ ' Grade _____ Wt. _____ Type Cement _____
10. Specifications for pressure control equipment and testing procedures: Schaffer type E 10" series 900 hydraulic BOP
11. Type and characteristics of drilling fluids: Native mud to top of Abo. Mud up with salt base gel: 15cc water loss, 35 visc. and 9.5 lb/gal mud wt.
12. Testing, logging, and coring programs: No testing or coring is anticipated.
Will run Compensated Neutron-Litho Density Tool and Dual Laterolog gamma ray logs.
13. Anticipated abnormal pressures or temperature: None anticipated
14. Anticipated commencement and completion date: September 20, 1983 - Oct. 4, 1983
15. Other pertinent information: _____



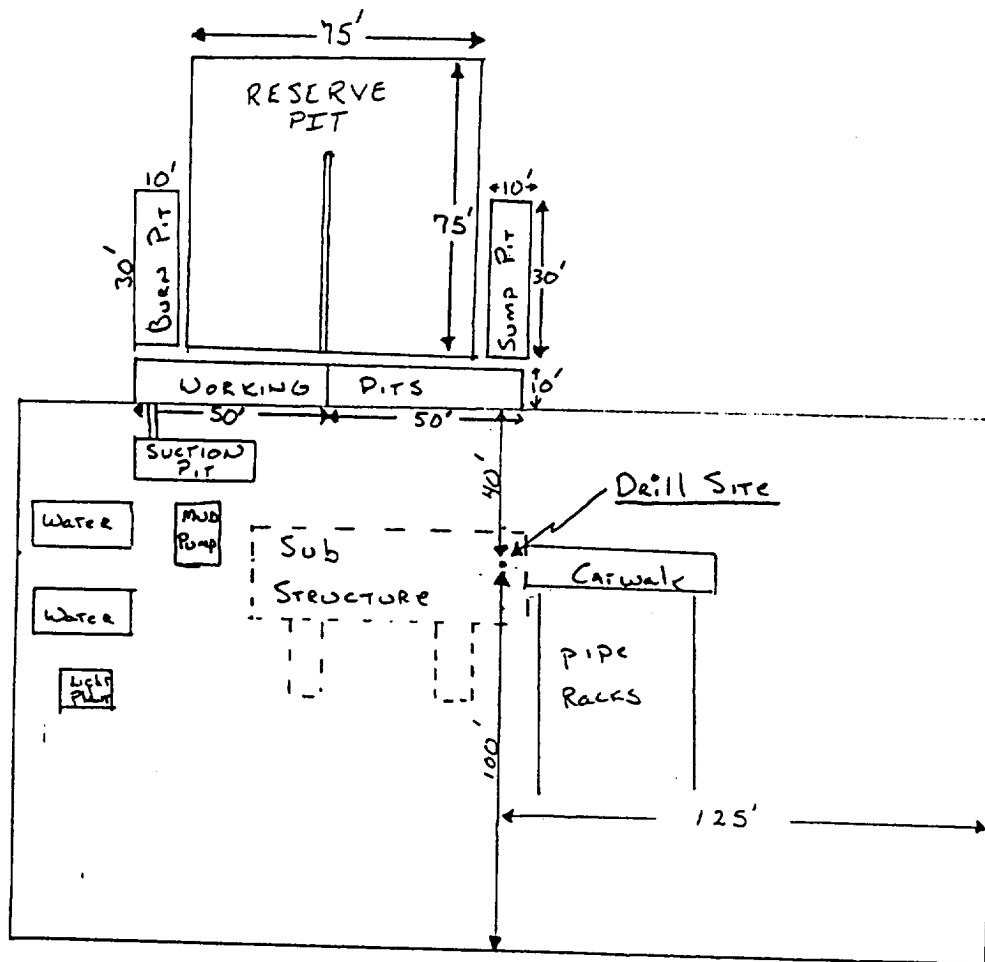
SURFACE USE PLAN EXHIBIT "A"
McClellan Oil Corporation
PJ FED. COM. NO. 2
Sec. 13-T9S-R25E
Chaves County, New Mexico

McCLELLAN OIL CORPORATION
SUGGESTED PAD DIMENSIONS

Reserve Pits 4 ft. deep, plastic lined

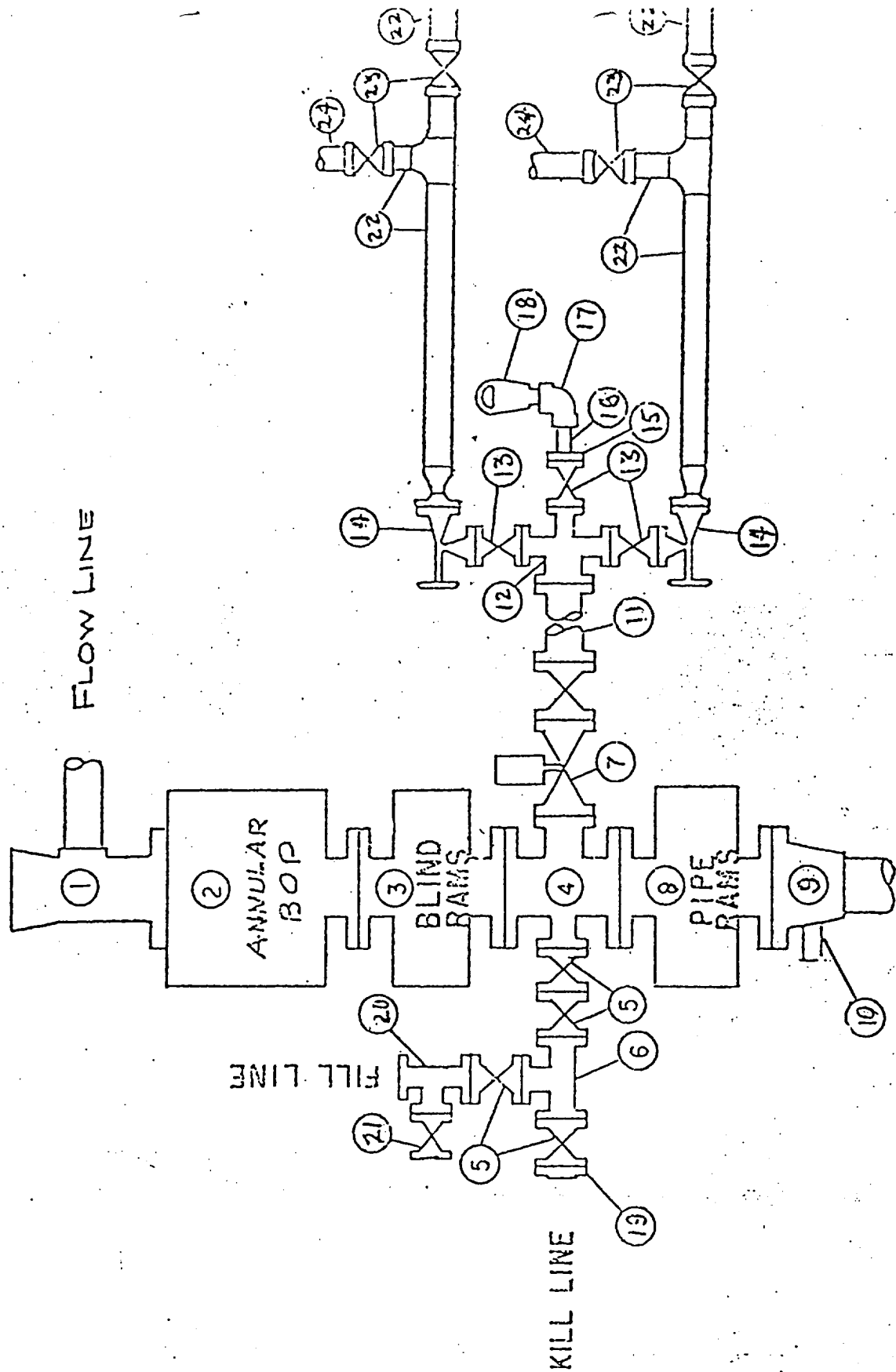
Working pits 5 ft. deep

No cellar



Scale 1" = 50'

BLOWOUT PREVENTER SPECIFICATION



SURFACE USE PLAN EXHIBIT "E"
 McClellan Oil Corporation
 PJ FED. COM. NO. 2
 Sec. 13-T9S-R25E
 Chaves County, New Mexico