

UNITED STATES  
DEPARTMENT OF THE INTERIOR

## GEOLOGICAL SURVEY

## APPLICATION FOR PERMIT TO DRILL, DEEPEN, OR PLUG BACK

## 1a. TYPE OF WORK

DRILL ☒DEEPEN ☐PLUG BACK ☐

## b. TYPE OF WELL

OIL  
WELL ☐GAS  
WELL ☒

OTHER

SINGLE  
ZONE ☒MULTIPLE  
ZONE ☐

## 2. NAME OF OPERATOR

McClellan Oil Corporation ✓

## 3. ADDRESS OF OPERATOR

P.O. Drawer 730, Roswell, N.M. 88202

## 4. LOCATION OF WELL (Report location clearly and in accordance with any State requirements.)\*

At surface

660' FNL &amp; 660' FWL

At proposed prod. zone

## 5. LEASE DESIGNATION AND SERIAL NO.

NM-11596

## 6. IF INDIAN, ALLOTTEE OR TRIBE NAME

## 7. UNIT AGREEMENT NAME

## 8. FARM OR LEASE NAME

PJ Com. Federal Com

## 9. WELL NO.

3

## 10. FIELD AND POOL, OR ABOGAT

South-Bitter Lakes Abo

11. SEC. T., R., M., OR BLK.  
AND SURVEY OR AREA

Sec. 11-T9S-R25E

## 12. COUNTY OR PARISH

Chaves

## 13. STATE

NM

## 14. DISTANCE IN MILES AND DIRECTION FROM NEAREST TOWN OR POST OFFICE\*

15 miles Northeast of Roswell, N.M.

## 15. DISTANCE FROM PROPOSED\*

LOCATION TO NEAREST  
PROPERTY OR LEASE LINE, FT.  
(Also to nearest drlg. unit line, if any)

660'

## 16. NO. OF ACRES IN LEASE

872.16 MOL

17. NO. OF ACRES ASSIGNED  
TO THIS WELL

160

18. DISTANCE FROM PROPOSED LOCATION\*  
TO NEAREST WELL, DRILLING, COMPLETED,  
OR APPLIED FOR, ON THIS LEASE, FT.

6407'

## 19. PROPOSED DEPTH

4300'

## 20. ROTARY OR CABLE TOOLS

Rotary

## 21. ELEVATIONS (Show whether DF, RT, GR, etc.)

3529' G.L.

## 22. APPROX. DATE WORK WILL START\*

Oct. 6, 1983

## 23.

## PROPOSED CASING AND CEMENTING PROGRAM

SIZE OF HOLE	SIZE OF CASING	WEIGHT PER FOOT	SETTING DEPTH	QUANTITY OF CEMENT
17- $\frac{1}{2}$ "	16"	70#	80'	5 yards
12- $\frac{1}{4}$ "	8-5/8"	24#	950'	500 sx (circulated)
7-7/8"	4- $\frac{1}{2}$ "	10.5#	4300'	300 sx

Propose to drill to approximately 4300' to test the Abo formation. If production is indicated, casing will be run and completion attempted.

Mud program: Will drill to top of Abo with native mud. Will mud up with salt gel, having a 35 visc, 20 cc water loss and 9.8 lb/gal mud.

Gas is dedicated,

RECEIVED BY

SEP 23 1983

O. C. D.  
ARTESIA, OFFICERECEIVED  
AUG 24 11 04 AM '83  
BUREAU OF LAND MANAGEMENT  
ROSWEEL DISTRICT

RECEIVED

Post ID-1  
9-30-83  
New Loc 4 APF

IN ABOVE SPACE DESCRIBE PROPOSED PROGRAM: If proposal is to deepen or plug back, give data on present productive zone and proposed new productive zone. If proposal is to drill or deepen directionally, give pertinent data on subsurface locations and measured and true vertical depths. Give blowout preventer program, if any.

## 24.

SIGNED

Mark McClellan

TITLE

Geologist

DATE

Aug. 22, 1983

(This space for Federal or State office use)

PERMIT NO.

APPROVAL DATE

APPROVED BY

CONDITIONS OF APPROVAL, IF ANY

TITLE

DATE

9/22/83

\*See Instructions On Reverse Side

APPROVAL SUBJECT TO  
GENERAL REQUIREMENTS AND  
SPECIAL STIPULATIONS  
ATTACHED

All distances must be from the outer boundaries of the Section.

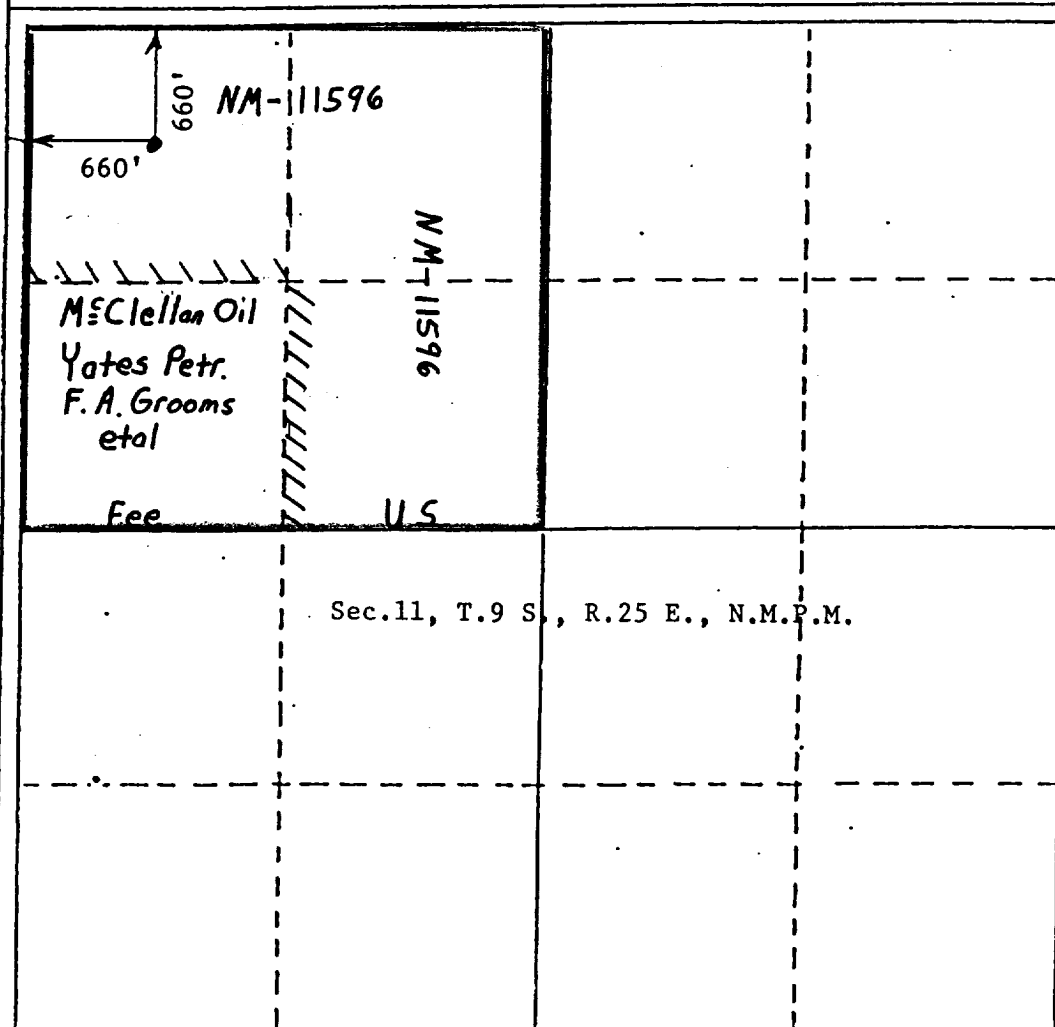
Operator McClellan Oil Corp.			Lease P-J Federal <i>Com</i>		Well No. #3
Unit Letter D	Section 11	Township 9 South	Range 25 East	County Chaves	
Actual Postage Location of Well: 660 feet from the North line and 660 feet from the West line					
Ground Level Elev. 3529	Producing Formation Abo		Pool South Bitter Lakes Abo		Dedicated Acreage: 160

1. Outline the acreage dedicated to the subject well by colored pencil or hatchure marks on the plat below.
2. If more than one lease is dedicated to the well, outline each and identify the ownership thereof (both as to well interest and royalty).
3. If more than one lease of different ownership is dedicated to the well, have the interests of all owners been consolidated by communitization, unitization, force-pooling, etc?

☒ Yes ☐ No If answer is "yes," type of consolidation Communitization

If answer is "no," list the owners and tract descriptions which have actually been consolidated. (Use reverse side of this form if necessary.)

No allowable will be assigned to the well until all interests have been consolidated (by communitization, unitization, forced-pooling, or otherwise) or until a non-standard unit, eliminating such interests, has been approved by the Division.



## CERTIFICATION

I hereby certify that the information contained herein is true and complete to the best of my knowledge and belief.

*Mark McClellan*

Name  
Mark McClellan  
Position  
Geologist  
Company  
McClellan Oil Corp.  
Date  
Aug. 19, 1983

I hereby certify that the well location shown on this plat was plotted from the notes of actual surveys made by me or under my supervision, and that the same is true and correct to the best of my knowledge and belief.

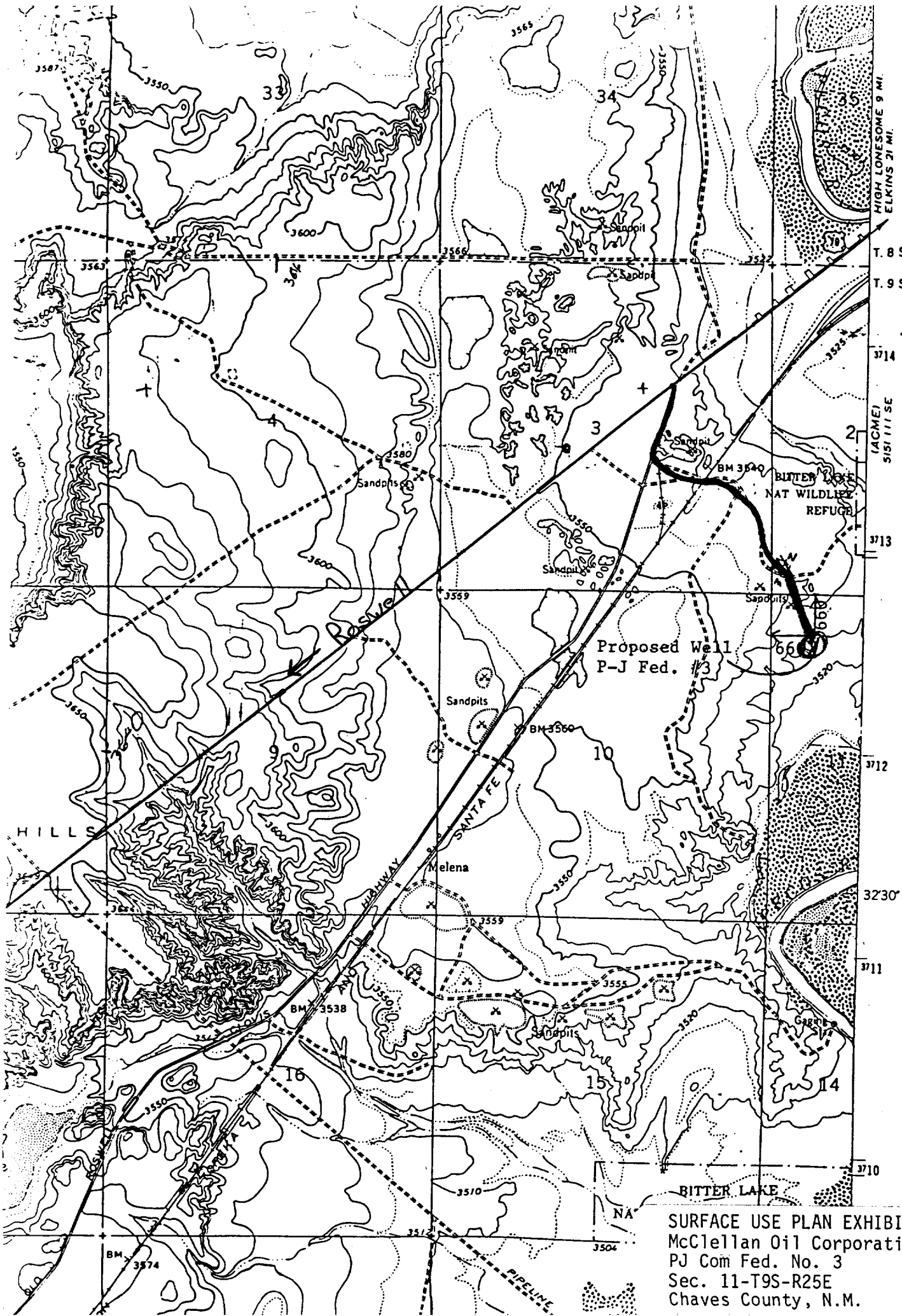
Date Surveyed  
August 12, 1983  
Registered Professional Engineer  
and/or Land Surveyor  
John D. Jaques  
Certificate No. 6290

REQUIREMENTS  
(NTL-6)

1. Location: Sec. 11-T9S-R25E, 660' FNL & 660' FWL
2. Elevation: 3529' G.L.
3. Geologic name of surface formation: See Archaeological Report
4. Type of drilling rig and associated equipment: Rotary
5. Proposed drilling depth and objective formation: 4300', Abo
6. Estimated tops of geologic markers:

Yates _____	San Andres <u>490'</u>	Abo <u>3752'</u>
7-Rivers _____	Glorieta <u>1618'</u>	Wolfcamp _____
Queen _____	Tubb <u>3050'</u>	_____
7. Estimated depths of any oil, water, or gas: Possible gas; 3752'-4300'
- 8-9. Proposed casing program:

<u>16"</u> @ <u>80'</u>	Grade <u>J-55</u>	Wt. <u>70#</u>	Type Cement <u>Ready Mix</u>
<u>8-5/8"</u> @ <u>950'</u>	Grade <u>J-55</u>	Wt. <u>24#</u>	Type Cement <u>Class "C"</u>
<u>4-1/2"</u> @ <u>4300'</u>	Grade <u>J-55</u>	Wt. <u>10.5#</u>	Type Cement <u>Class "C"</u>
10. Specifications for pressure control equipment and testing procedures: Schaffer type E 10" series 900 hydraulic BOP
11. Type and characteristics of drilling fluids: Native mud to top of Abo. Mud up with salt base gel: 20 cc water loss, 35 visc. and 9.8 lb/gal mud weight.
12. Testing, logging, and coring programs: No testing or coring is anticipated.  
Will run Compensated Neutron - Litho Density, Dual Laterolog gamma ray logs.
13. Anticipated abnormal pressures or temperature: None anticipated
14. Anticipated commencement and completion date: Oct. 6, 1983 - Oct. 22, 1983
15. Other pertinent information: \_\_\_\_\_



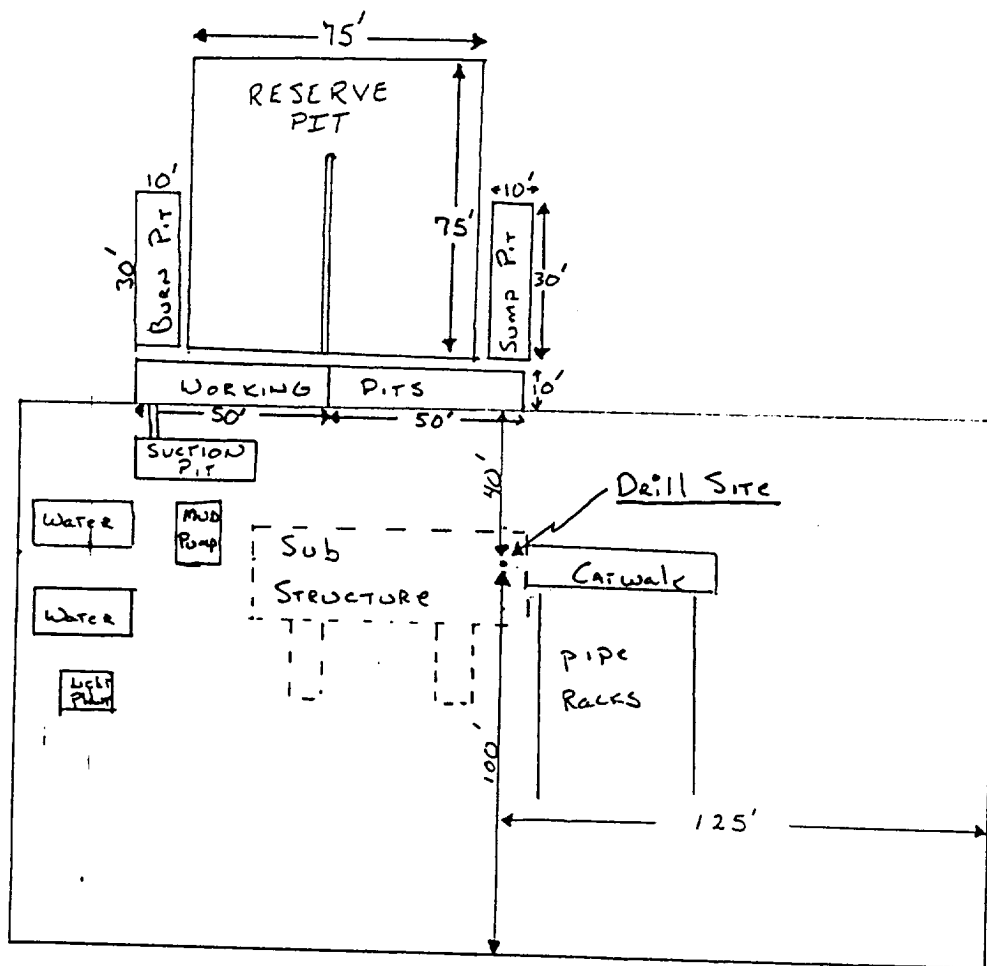
SURFACE USE PLAN EXHIBIT "B"  
McClellan Oil Corporation  
PJ Com Fed. No. 3  
Sec. 11-T9S-R25E  
Chaves County, N.M.

### SUGGESTED PAD DIMENSIONS

Reserve Pits 4 ft. deep, plastic lined

Working pits 5 ft. deep

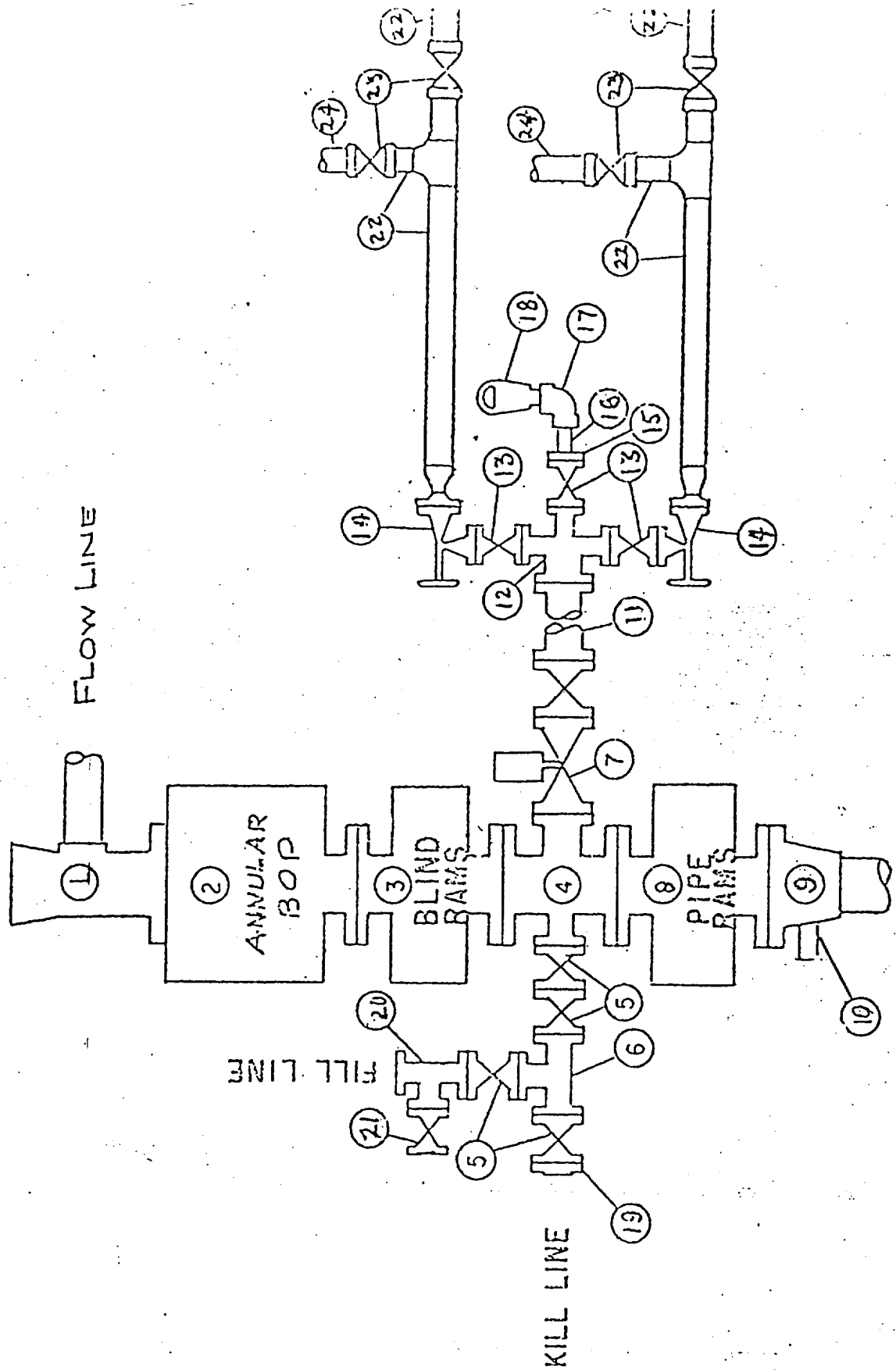
No cellar



Scale  $1'' = 50'$

SURFACE USE PLAN EXHIBIT "D"  
McClellan Oil Corporation  
PJ Com Fed. No. 3  
Sec. 11-T9S-R25E  
Chaves County, N.M.

# BLOWOUT PREVENTER SPECIFICATION



SURFACE USE PLAN EXHIBIT "E"  
 McClellan Oil Corporation  
 PJ Com Fed. No. 3  
 Sec. 11-T9S-R25E  
 Chaves County, N.M.