

UNITED STATES
DEPARTMENT OF THE INTERIOR
GEOLOGICAL SURVEYNM OIL CONS. COMMISSION
Drawer DD
Artesia, NM 88210

5. PHASE DESIGNATION AND SERIAL NO.

NM-37037

6. IF INDIAN, ALLOTTEE OR TRIBE NAME

7. UNIT AGREEMENT NAME

8. FARM OR LEASE NAME

Esperanza "XP" Federal

9. WELL NO.

10. FIELD AND POOL, OR WILDCAT

Wildcat - Abo

11. SEC., T., R., M., OR BLK.
AND SURVEY OR AREA

Sec. 26-T4S-R20E

12. COUNTY OR PARISH

Chaves

13. STATE
NM

1a. TYPE OF WORK

DRILL ☒DEEPEN ☐PLUG BACK ☐

b. TYPE OF WELL

OIL
WELL ☐GAS
WELL ☒

OTHER

2. NAME OF OPERATOR

Yates Petroleum Corporation

3. ADDRESS OF OPERATOR

207 S. 4th, Artesia, New Mexico 88210

4. LOCATION OF WELL (Report location clearly and in accordance with any State requirements)

At surface

1980' FNL and 1980' FWL

At proposed prod. zone

same

14. DISTANCE IN MILES AND DIRECTION FROM NEAREST TOWN OR POST OFFICE*

Approximately 43 miles northwest of Roswell, NM.

15. DISTANCE FROM PROPOSED*

LOCATION TO NEAREST

PROPERTY OR LEASE LINE, FT.

(Also to nearest drlg. unit line, if any)

1980'

16. NO. OF ACRES IN LEASE

1200

17. NO. OF ACRES ASSIGNED

TO THIS WELL
160

18. DISTANCE FROM PROPOSED LOCATION*

TO NEAREST WELL, DRILLING, COMPLETED,
OR APPLIED FOR, ON THIS LEASE, FT.

19. PROPOSED DEPTH

4000+

20. ROTARY OR CABLE TOOLS

Rotary

21. ELEVATIONS (Show whether DF, RT, GR, etc.)

4510.5' GL

22. APPROX. DATE WORK WILL START*

ASAP

23.

PROPOSED CASING AND CEMENTING PROGRAM

SIZE OF HOLE	SIZE OF CASING	WEIGHT PER FOOT	SETTING DEPTH	QUANTITY OF CEMENT
17 1/2"	13 3/8"	J-55	550'	350 sx circulated
12 1/4"	8 5/8"	J-55	1350'	500 sx circulated
7 7/8"	4 1/2"	9.5#	TD	600 sx

We propose to drill and test the Abo and intermediate formations. Approximately 550' of surface casing will be set and cement circulated to shut off gravel and caving. If needed (lost circulation) 8 5/8" intermediate casing will be run to 1350' and cemented with enough cement calculated to tie back into the surface casing. If commercial, production casing will be run and cemented with adequate cover, perforated and stimulated as need for production.

MUD PROGRAM: FW gel/LCM to 1350', Brine 1350' to TD.

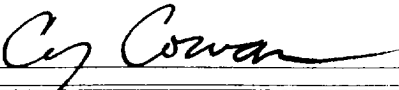
BOP PROGRAM: BOP's will be installed at the offset and tested daily.

GAS NOT DEDICATED.

IN ABOVE SPACE DESCRIBE PROPOSED PROGRAM: If proposal is to deepen or plug back, give data on present productive zone and proposed new productive zone. If proposal is to drill or deepen directionally, give pertinent data on subsurface locations and measured and true vertical depths. Give blowout preventer program, if any.

24.

SIGNED

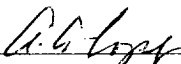
TITLE Regulatory AgentDATE 9/9/83

(This space for Federal or State office use)

PERMIT NO.

APPROVAL DATE

APPROVED BY



TITLE

DATE

9/23/83

CONDITIONS OF APPROVAL, IF ANY:

APPROVAL SUBJECT TO
GENERAL REQUIREMENTS AND
SPECIAL STIPULATIONS
ATTACHED

N. MEXICO OIL CONSERVATION COMMISS.
 WELL LOCATION AND ACREAGE DEDICATION PLAT

Form C-102
Supersedes C-128
Effective 1-1-65

All distances must be from the outer boundaries of the Section.

Operator YATES PETROLEUM CORPORATION			Lease ESPERANZA "XP" FEDERAL		Well No. 1
Unit Letter F	Section 26	Township 4 South	Range 20 East	County Chaves	
Actual Footage Location of Well: 1980 feet from the North line and 1980 feet from the West line					
Ground Level Elev. 4510.5	Producing Formation ABO		Pool WILD CAT	Dedicated Acreage: 160 Acres	

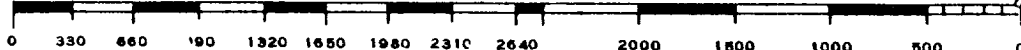
1. Outline the acreage dedicated to the subject well by colored pencil or hachure marks on the plat below.
2. If more than one lease is dedicated to the well, outline each and identify the ownership thereof (both as to working interest and royalty).
3. If more than one lease of different ownership is dedicated to the well, have the interests of all owners been consolidated by communitization, unitization, force-pooling, etc?

☐ Yes ☒ No If answer is "yes," type of consolidation _____

If answer is "no," list the owners and tract descriptions which have actually been consolidated. (Use reverse side of this form if necessary.) _____

No allowable will be assigned to the well until all interests have been consolidated (by communitization, unitization, forced-pooling, or otherwise) or until a non-standard unit, eliminating such interests, has been approved by the Commission.

	CERTIFICATION	
	<p>I hereby certify that the information contained herein is true and complete to the best of my knowledge and belief.</p> <p><i>Cy Cowan</i></p> <p>Name Cy Cowan</p> <p>Position Regulatory Agent</p> <p>Company Yates Petroleum Corp.</p> <p>Date 9/9/83</p> <p>I hereby certify that the well location shown on this plat was plotted from field notes of actual surveys made by me or under my supervision, and that the same is true and correct to the best of my knowledge and belief.</p> <p>Date Surveyed 9/3/83</p> <p>Registered Professional Engineer and/or Land Surveyor <i>Herschel Jones</i></p> <p>Certificate No. 3640</p>	



YATES PETROLEUM CORPORATION
Esperanza "XP" Federal #1
1980' FNL and 1980' FWL
Sec. 26-T4S-R20E

In conjunction with Form 9-331C, Application for Permit to Drill subject well, Yates Petroleum Corporation submits the following ten items of pertinent information in accordance with USGS requirements.

1. The geologic surface formation is sandy alluvium.
2. The estimated tops of geologic markers are as follows:

San Andres	surface
Yeso	300'
Abo	2047'
Pre-Cambrian	3242'
TD	4000'+
3. The estimated depths at which anticipated water, oil or gas formations are expected to be encountered:

Water: 250-350'

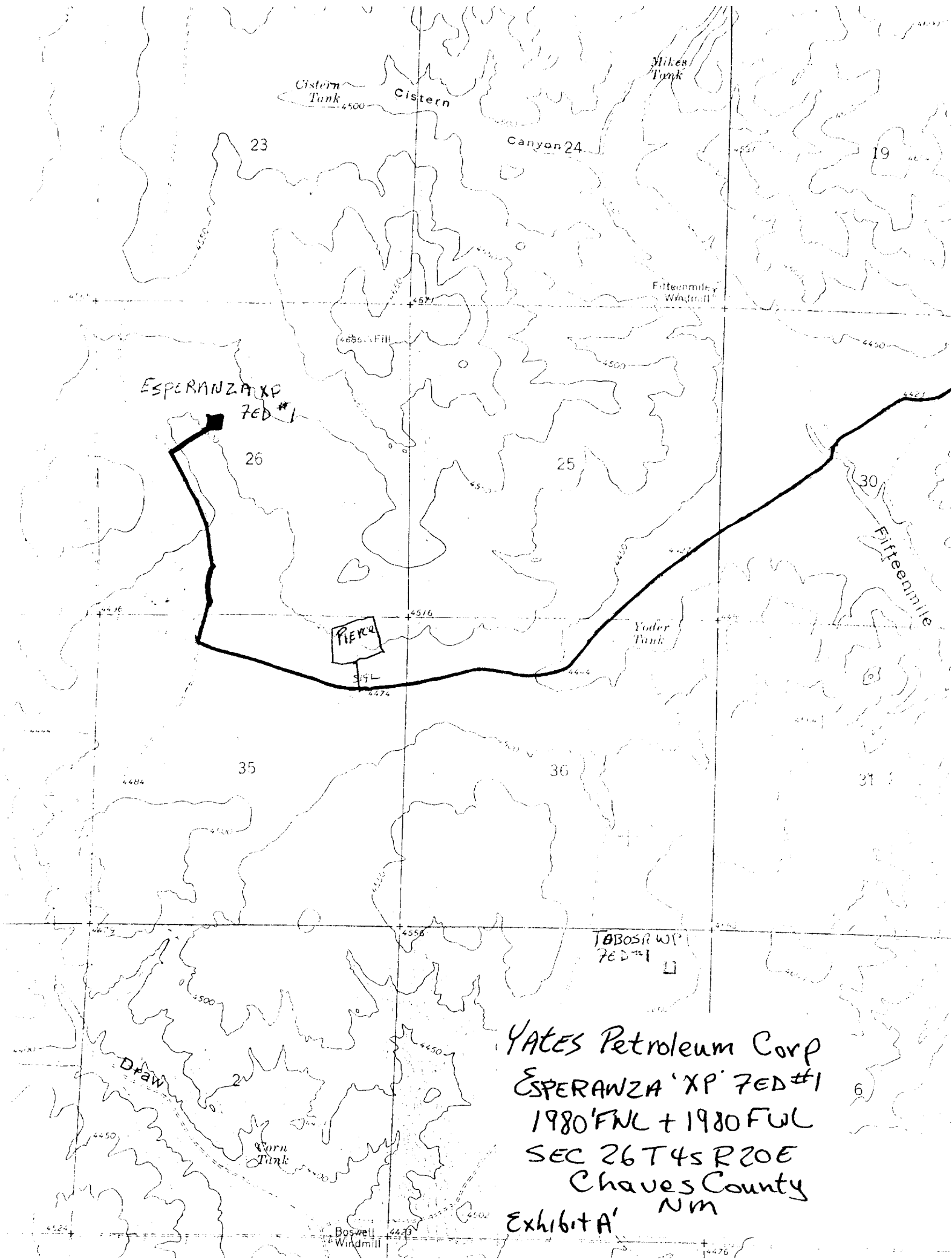
Oil or Gas: Abo 2100'
4. Proposed Casing Program: See Form 9-331C.
5. Pressure Control Equipment: See Form 9-331C.
6. Mud Program: See Form 9-331C.
7. Auxiliary Equipment: Kelly Cock; pit level indicators and flow sensor equipment; sub with full-opening valve on floor, drill pipe connection.
8. Testing, Logging and Coring Program:

Samples: Surface casing to TD.

DST's: As warranted.

Coring: None.

Logging: CNL-FDC TD to csg w/GR-CNL to surface, DLL from TD to csg.
9. No abnormal pressures or temperatures are anticipated.
10. Anticipated starting date: As soon as possible after approval.

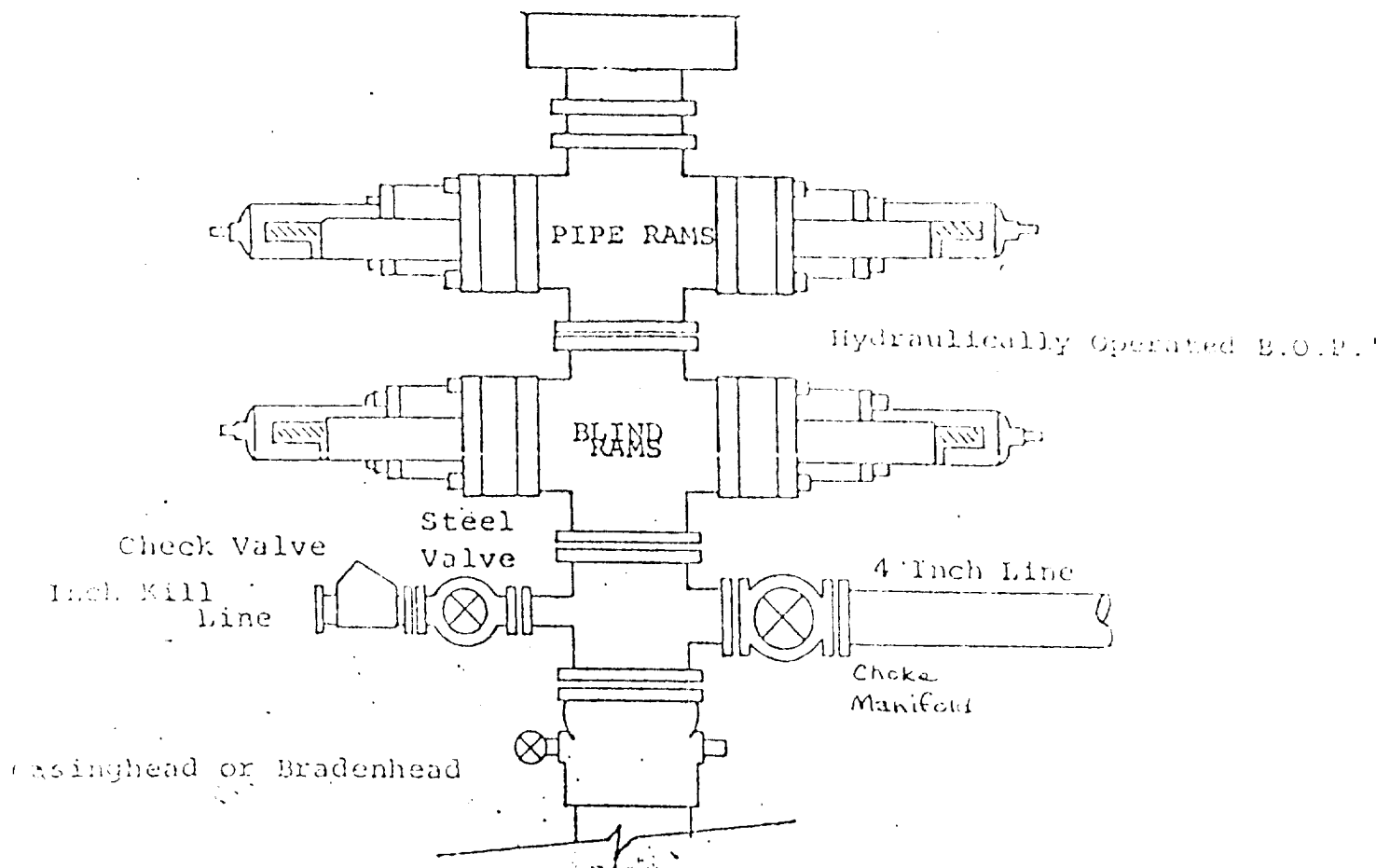


YATES Petroleum Corp
ESPERANZA 'XP' 7ED #1
1980'FWL + 1980FWL
SEC 26 T45 R20E
Chaves County
NM
Exhibit A'

EXHIBIT B

BOP DIAGRAM

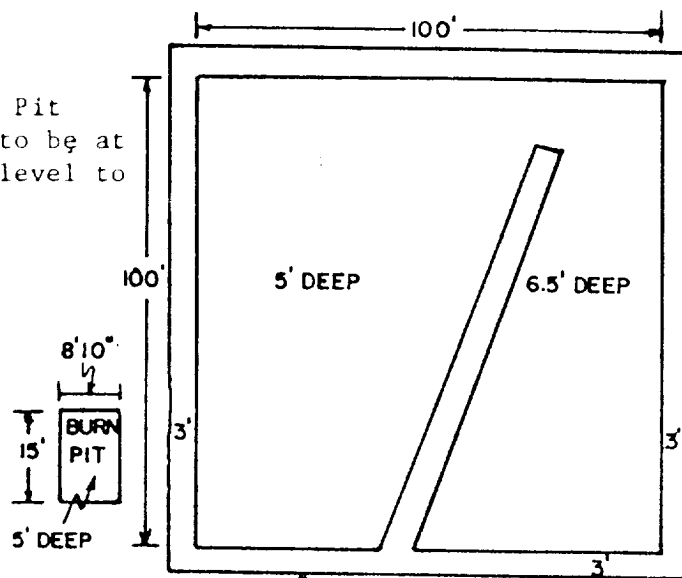
RATED 3000[#]



YATES PETROLEUM CORP.

Exhibit C

Reserve Pit
bottom to be at
ground level to
1 ft.



NOTE:

Inside walls must be as
high and wide as outer
walls of pit.

