

NO. OF COPIES RECEIVED	
DISTRIBUTION	
SANTA FE	/
FILE	/
U.S.G.S.	/
LAND OFFICE	/
OPERATOR	/

C. D.
ARTESIA OFFICE

5A. Indicate Type of Lease
STATE ☒ FEE ☐
5. State Oil Gas Lease No.
V-1548

APPLICATION FOR PERMIT TO DRILL, DEEPEN, OR PLUG BACK

1a. Type of Work
DRILL ☐ DEEPEN ☐ PLUG BACK ☐
b. Type of Well
OIL WELL ☒ GAS WELL ☐ OTHER ☐
SINGLE ZONE ☒ MULTIPLE ZONE ☐
2. Name of Operator
Collins Oil & Gas Corporation
3. Address of Operator
P.O. Box 2443, Roswell, NM 88202-2443
4. Location of Well
UNIT LETTER 0 LOCATED 660 FEET FROM THE South LINE
AND 1980 FEET FROM THE East LINE OF SEC. 14 TWP. 14S RGE. 29E NMPM
19. Proposed Depth
1850
19A. Formation
Queen
20. Rotary or C.T.
C.T.
21. Elevations (Show whether DE, RT, etc.)
3765.5 GL
21A. Kind & Status Plug. Bond
Single
21B. Drilling Contractor
Collins Oil & Gas
22. Approx. Date Work will start
7-25-89

7. Unit Agreement Name
8. Farm or Lease Name
Gulf State
9. Well No.
1
10. Field and Pool, or Wildcat
Double L (Queen)
12. County
Chaves

23. PROPOSED CASING AND CEMENT PROGRAM

SIZE OF HOLE	SIZE OF CASING	WEIGHT PER FOOT	SETTING DEPTH	SACKS OF CEMENT	EST. TOP
8"	5 1/2	1350	1750		

RE-ENTRY OF EXISTING P/A WELL

Collins Oil & Gas Corporation proposes to enter existing casing and drill existing 4 plugs from well. If commercial production is indicated then completion work will be attempted.

Previous well logs, and drilling reports are currently on file at OCC, Artesia, NM
Previous API # 30-005-62056 from Orla Petco, Inc. P.O. Box 953, Midland, Texas, 79702.

WELL SHUT IN FOR 180 DAYS
DATE 12/21/89
UNLESS DRILLING UNDERWAY

IN ABOVE SPACE DESCRIBE PROPOSED PROGRAM: IF PROPOSAL IS TO DEEPEN OR PLUG BACK, GIVE DATA ON PRESENT PRODUCTIVE ZONE AND PROPOSED NEW PRODUCTIVE ZONE. GIVE BLOWOUT PREVENTER PROGRAM, IF ANY.

I hereby certify that the information above is true and complete to the best of my knowledge and belief.

Signed Mike Williams Title Pres. Collins Oil & Gas Corp. Date 6-18-89

(This space for State Use)

APPROVED BY MIKE WILLIAMS TITLE SUPERVISOR, DISTRICT II DATE JUN 21 1989

MEXICO OIL CONSERVATION COMMISSION
WELL LOCATION AND ACREAGE DEDICATION PLAT

Form C-102
Supersedes C-128
Effective 1-1-65

All distances must be from the outer boundaries of the Section

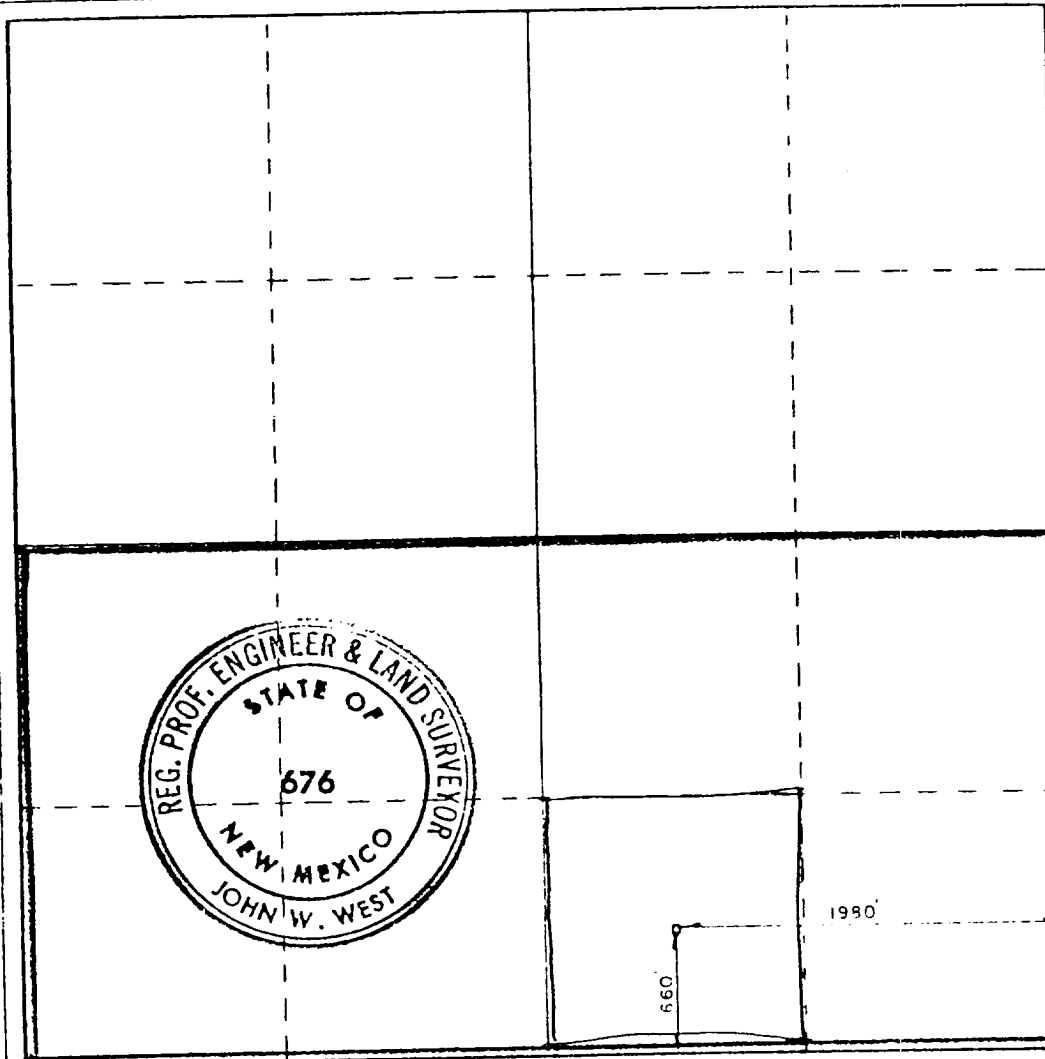
Lessee ORLA PETCO		Lease GULF STATE		Well No. 1	
Tract Letter 0	Section 14	Township 14 SOUTH	Range 29 EAST	County CHAVES	
Actual Footage Location of Well:					
660	feet from the	SOUTH	line and	1980	feet from the EAST line
Ground Level Elev. 3765.5	Producing Formation Queens Sand		Pool Und. Double "L" (Queens) Assoc.		Dedicated Acreage: 320 90 Acres

- Outline the acreage dedicated to the subject well by colored pencil or hatchure marks on the plat below.
- If more than one lease is dedicated to the well, outline each and identify the ownership thereof (both as to working interest and royalty).
- If more than one lease of different ownership is dedicated to the well, have the interests of all owners been consolidated by communitization, unitization, force-pooling, etc?

☐ Yes ☐ No If answer is "yes," type of consolidation _____

If answer is "no," list the owners and tract descriptions which have actually been consolidated. (Use reverse side of this form if necessary.) _____

No allowable will be assigned to the well until all interests have been consolidated (by communitization, unitization, forced-pooling, or otherwise) or until a non-standard unit, eliminating such interests, has been approved by the Commission.



CERTIFICATION

I hereby certify that the information contained herein is true and complete to the best of my knowledge and belief.

James M.C. Ritchie, Jr.

Position **James M.C. Ritchie, Jr.**

Vice-President

Company **Orla Petco, Inc.**

Date **October 13, 1983**

I hereby certify that the well location shown on this plat was plotted from field notes of actual surveys made by me or under my supervision, and that the same is true and correct to the best of my knowledge and belief.

Date Surveyed **10/10/83**

Registered Professional Engineer and/or Land Surveyor

John W. West

Certificate No **JOHN W. WEST, 676**
RONALD J. EIDSON, 3239