

NM OIL CONS. MISSION
Drawer DD
Artesia, NM UNITED STATES
DEPARTMENT OF THE INTERIOR
GEOLOGICAL SURVEYSUBMIT IN TRIPLICATE
(Other instructions on
reverse side)Form approved.
Budget Bureau No. 42-B1425.

30-005-62061

5. LEASE DESIGNATION AND SERIAL NO.

RECEIVED
OCT 31 1983
BY INDIAN, ALLOTTEE OR TRIBE NAME

UNIT AGREEMENT NAME

8. FARM OR LEASE NAME

TRAVIS FED COM

9. WELL NO.

10. FIELD AND POOL, OR WILDCAT

ABC PECOS SLOPE A/B
11. SEC., T., R., M., OR BLK.
AND SURVEY OR AREA

SEC 20, T6S, R26E

12. COUNTY OR PARISH

CHAVES NEW MEXICO

17. NO. OF ACRES ASSIGNED
TO THIS WELL

160

20. ROTARY OR CABLE TOOLS

ROTARY

22. APPROX. DATE WORK WILL START*

Nov. 1, 1983

1a. TYPE OF WORK

DRILL ☒DEEPEN ☐

b. TYPE OF WELL

OIL
WELL ☐GAS
WELL ☒

OTHER

2. NAME OF OPERATOR

MESA PETROLEUM CO.

3. ADDRESS OF OPERATOR

PC BOX 2009 Amarillo, Tx 79189

4. LOCATION OF WELL (Report location clearly and in accordance with any State requirements.)

At surface

660' FSL & 660' FWL SW $\frac{1}{4}$ SW $\frac{1}{4}$ Unit M

At proposed prod. zone Same

14. DISTANCE IN MILES AND DIRECTION FROM NEAREST TOWN OR POST OFFICE*

30 miles Northeast of Roswell, New Mexico

15. DISTANCE FROM PROPOSED*

LOCATION TO NEAREST
PROPERTY OR LEASE LINE, FT.
(Also to nearest drlg. unit line, if any)

600' / 660'

16. NO. OF ACRES IN LEASE

COM 160

18. DISTANCE FROM PROPOSED LOCATION*
TO NEAREST WELL, DRILLING, COMPLETED,
OR APPLIED FOR, ON THIS LEASE, FT.

N/A

19. PROPOSED DEPTH

4400'

17. NO. OF ACRES ASSIGNED
TO THIS WELL

160

21. ELEVATIONS (Show whether DF, RT, GR, etc.)

365' GR

23.

PROPOSED CASING AND CEMENTING PROGRAM

SIZE OF HOLE	SIZE OF CASING	WEIGHT PER FOOT	SETTING DEPTH	QUANTITY OF CEMENT
17 7/8"	13 3/8"	48#	950'	700/300 SURFACE
11"	8 5/8"	24#	1800'	700/300 TIE BACK
7 7/8"	4 1/2"	10.5#	4400'	300 COVER ALL PAY

Propose to drill 17 7/8' hole with mud or air to approximately 950' and run 13 3/8" casing. Will cement to surface and test casing with cementing head to 600 psi. Will reduce hole to 11" and drill on mud or air to approximately 1800' and run 8 5/8" casing if circulation has been lost and cement with sufficient amounts to tie-back to 13 3/8" casing. Will then reduce hole to 7 7/8", test BOP's and casing and drill to total depth. If hole conditions are favorable, the 8 5/8" casing will be omitted and the hole will be reduced to 7 7/8" and drilled to total depth. 4 1/2" casing will be run as production casing.

Operator's gas sales are dedicated.

Noted a #8
SD-12 1/2" BOP
11-4-83

IN ABOVE SPACE DESCRIBE PROPOSED PROGRAM: If proposal is to deepen or plug back, give data on present productive zone and proposed new productive zone. If proposal is to drill or deepen directionally, give pertinent data on subsurface locations and measured and true vertical depths. Give blowout preventer program, if any.

24.

SIGNED

TITLE Regulatory Agent

DATE 5 Oct. 83

(This space for Federal or State office use)

PERMIT NO.

APPROVAL DATE

APPROVED BY

TITLE

DATE 10/27/83

CONDITIONS OF APPROVAL, IF ANY:

APPROVAL SUBJECT TO
GENERAL REQUIREMENTS AND
SPECIAL STIPULATIONS
ATTACHED

OIL CONSERVATION DIVISION

P. O. BOX 2088

STATE OF NEW MEXICO
ENERGY AND MINERALS DEPARTMENT

SANTA FE, NEW MEXICO 87501

Form C-102
Revised 10-1-78

All distances must be from the outer boundaries of the Section.

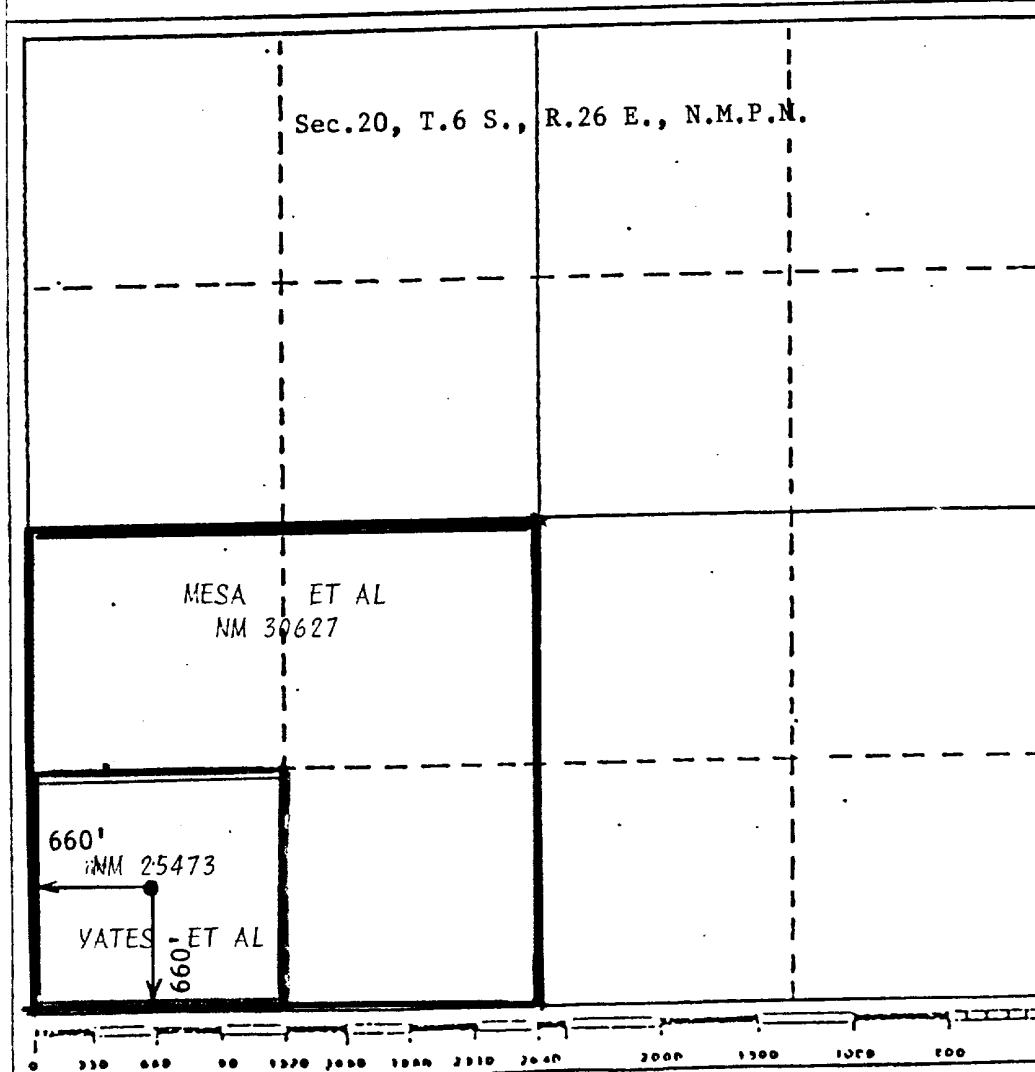
Operator Mesa Petroleum Co.		Lease Travis Federal Com		Well No. #1
Unit Letter M	Section 20	Township 6 South	Range 26 East	County Chaves
Actual Postage Location of Wells				
660 feet from the South line and		660 feet from the West line		
Ground Level Elev. 3659	Producing Formation ABO	Pool Pecos Slope ABO		Dedicated Acreage: SW $\frac{1}{4}$ 160 Acres

1. Outline the acreage dedicated to the subject well by colored pencil or hatchure marks on the plat below.
2. If more than one lease is dedicated to the well, outline each and identify the ownership thereof (both as to working interest and royalty).
3. If more than one lease of different ownership is dedicated to the well, have the interests of all owners been consolidated by communitization, unitization, force-pooling, etc?

☐ Yes ☐ No If answer is "yes," type of consolidation Communitization in progress

If answer is "no," list the owners and tract descriptions which have actually been consolidated. (Use reverse side of this form if necessary.)

No allowable will be assigned to the well until all interests have been consolidated (by communitization, unitization, force-pooling, or otherwise) or until a non-standard unit, eliminating such interests, has been approved by the Division.



CERTIFICATION

I hereby certify that the information contained herein is true and complete to the best of my knowledge and belief.

Name

Lloyd Reed

Position

Regulatory Agent

Company

Mesa Petroleum Co.

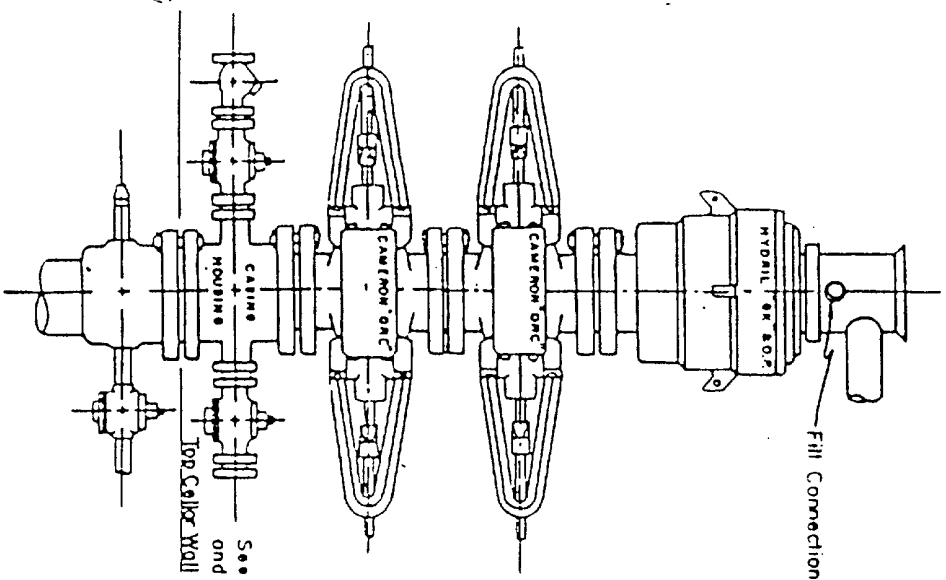
Date

4 Oct. 83

I hereby certify that the well location shown on this plat was plotted from field notes of actual surveys made by me or under my supervision, and that the same is true and correct to the best of my knowledge and belief.

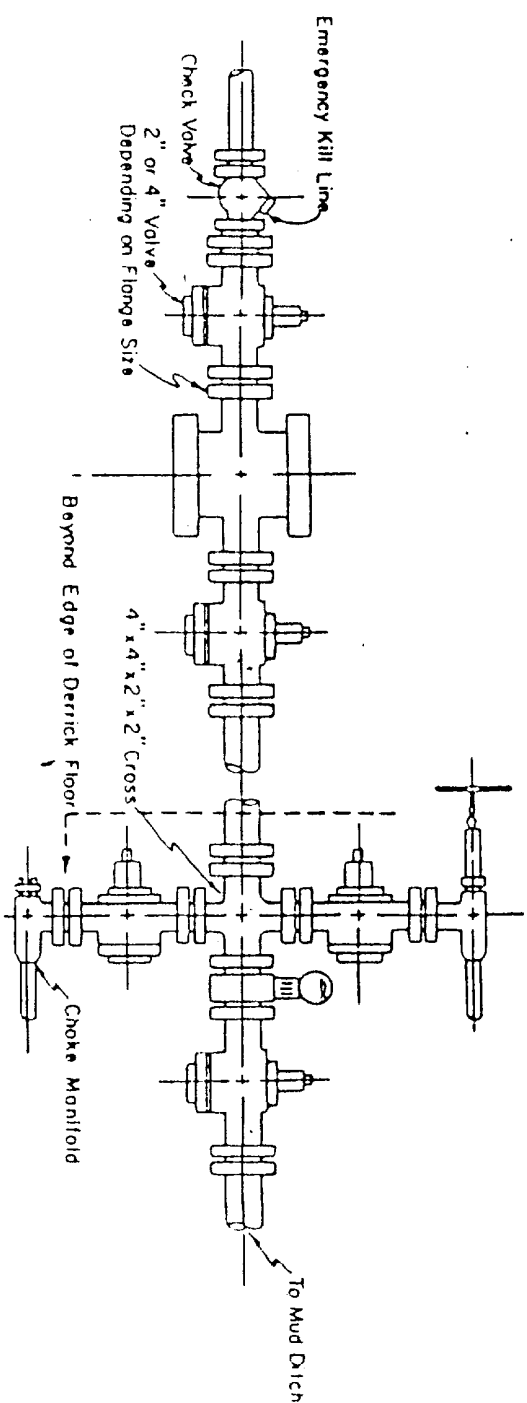
Date Surveyed
October 1983Registered Professional Surveyor
and/or Land SurveyorJohn D. Jaquess, R.E. & L.S.
Certificate No. 6290

Blow-out Preventers hydril and choke manifold are oil 900 Series



3,000 PSI WORKING PRESSURE
BLOW-OUT PREVENTER HOOK-UP

See Detail of 4" Flow Line
and Choke Assembly



3,000 PSI WORKING PRESSURE
KILL, CHOKE, AND FILL CONNECTIONS

DETAIL OF 4" FLOW LINE CHOKE ASSEMBLY

Minimum assembly for 3,000 PSI working pressure will consist of three preventers.
The bottom and middle preventers may be Cameron.

NOTE: HYDRIL, not installed on shallow-low pressure wells.
RAM type BOPs are API 10" X 3000 PSI



MESA
PETROLEUM CO.
PERMIAN BASIN DIVISION



E X H I B I T

V I

APPLICATION FOR PERMIT TO DRILL

MESA PETROLEUM CO,
TRAVIS FED. COM. #1
660' FSL & 660' FWL, SEC 20, T6S, R26E
CHAVES COUNTY, NEW MEXICO

LEASE NO. NM 25473

In conjunction with Form 9331-C, Application For Permit to Drill subject well, the following additional information is provided:

1. Applicable portions of the GENERAL REQUIREMENTS FOR OIL AND GAS OPERATIONS ON FEDERAL LEASES, Roswell District, Geological Survey of September 1, 1980 will be adhered to.

2. Geological markers are estimated as follows:

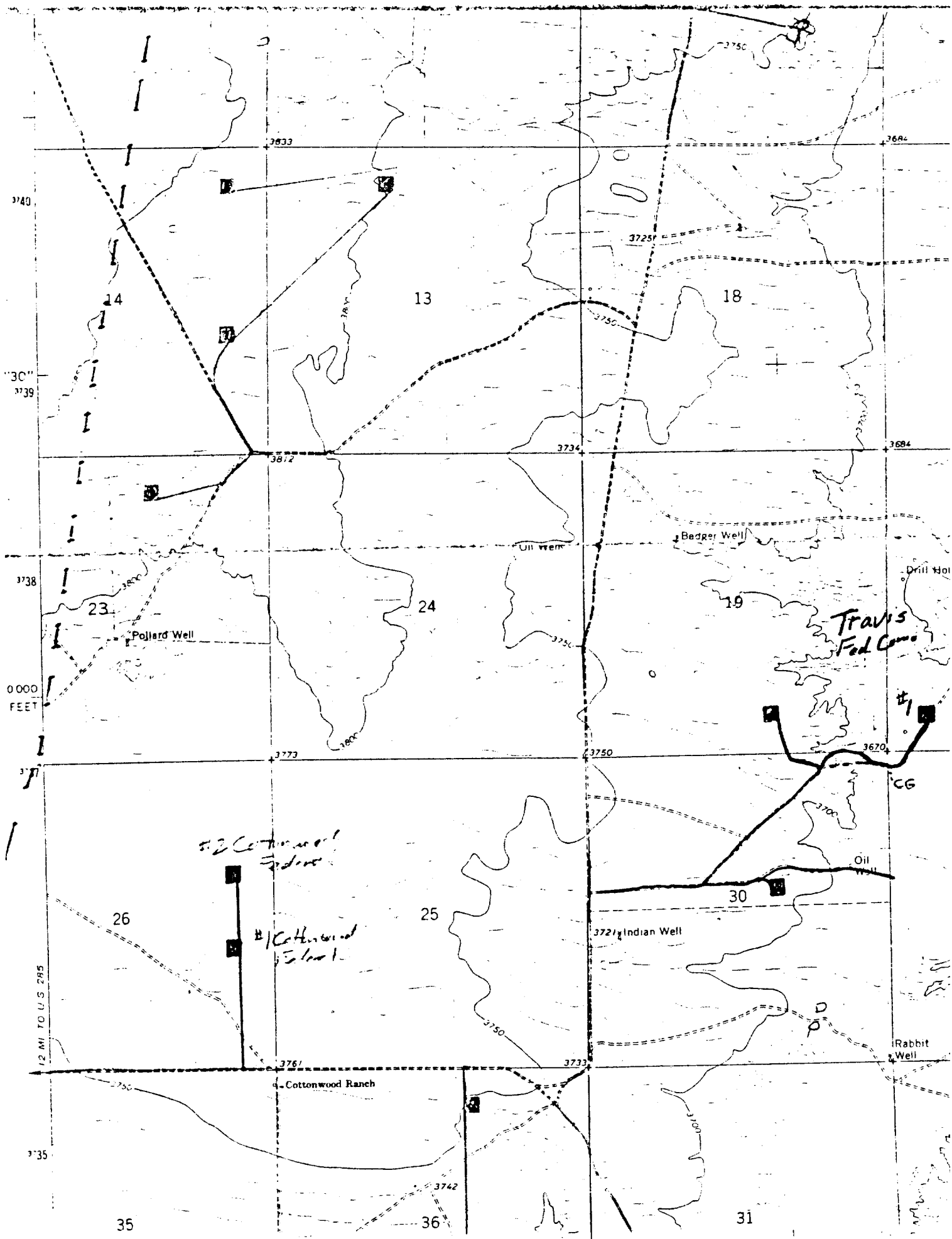
SEVEN RIVERS	Surface
SAN ANDRES	525
GLORIETA	1470
TUBB	3080
ABO	3650


3. Hydrocarbon bearing strata may occur in the ABO formation(s). No fresh water is expected to be encountered below 950'.

4. The Casing and Blowout Preventer Program will be determined by hole conditions as encountered. See Exhibit VI. Anticipate drilling with mud using ram type preventer and rotating head for well control. The 10 3/4" casing will be set at approximately 950' to protect any fresh water zones and cemented to the surface. The 8 5/8" casing will be set at approximately 1600' if water zones have been encountered or omitted if not and ram type preventers installed. Sufficient amounts and kinds of cement would be used to ensure any water, gas or oil zones encountered are isolated and shut off down to the casing point if run. The 4 1/2" production casing will be set at total depth or shallower depending upon the depth of the deepest commercial hydrocarbon bearing strata encountered.

5. No drill stem test or coring program is planned. The logging program may consist of a GR-CNL from surface total depth and FDC from casing point to total depth.

6. Anticipated drilling time is ten days with completion operations to follow as soon as a completion unit is available.





MESA

PETROLEUM CO.

PERMAN BASIN DIVISION




EXHIBIT 11

TOPOGRAPHIC FEATURES FOR
PROPOSED TRAVIS FED COM #1