

UNITED STATES  
DEPARTMENT OF THE INTERIOR  
GEOLOGICAL SURVEY

## APPLICATION FOR PERMIT TO DRILL, DEEPEN, OR PLUG BACK

## 1a. TYPE OF WORK

DRILL ☒DEEPEN ☐PLUG BACK ☐

## b. TYPE OF WELL

OIL  
WELL ☐GAS  
WELL ☒OTHER ☐

## 2. NAME OF OPERATOR

Mesa Petroleum Co.

## 3. ADDRESS OF OPERATOR

P.O. Box 2009 / Amarillo, Texas 79189

## 4. LOCATION OF WELL (Report location clearly and in accordance with any State regulations.)

At surface

1980' FNL &amp; 1980' FWL

SE/4 NW/4

At proposed prod. zone same

## 14. DISTANCE IN MILES AND DIRECTION FROM NEAREST TOWN OR POST OFFICE\*

17 miles Northeast of Roswell, New Mexico

## 15. DISTANCE FROM PROPOSED\*

LOCATION TO NEAREST  
PROPERTY OR LEASE LINE, FT.  
(Also to nearest drlg. unit line, if any)

660'/660'

## 16. NO. OF ACRES IN LEASE

Com 160

17. NO. OF ACRES ASSIGNED  
TO THIS WELL.

160

18. DISTANCE FROM PROPOSED LOCATION\*  
TO NEAREST WELL, DRILLING, COMPLETED,  
OR APPLIED FOR, ON THIS LEASE, FT.

2300'

## 19. PROPOSED DEPTH

4500'

## 20. ROTARY OR CABLE TOOLS

Rotary

## 21. ELEVATIONS (Show whether DF, RT, GR, etc.)

3546' GR

## 22. APPROX. DATE WORK WILL START\*

January 15, 1982

## 23.

## PROPOSED CASING AND CEMENTING PROGRAM

SIZE OF HOLE	SIZE OF CASING	WEIGHT PER FOOT	SETTING DEPTH	QUANTITY OF CEMENT
14 3/4"	10 3/4"	40.5#	950'	700/300 Surface
9 1/2"	7 5/8"	26.4#	1600'	700/300 Tie Back
6 1/2 or 7 7/8"	4 1/2"	10.5#	4500'	300 Cover ABO

Propose to drill 14 3/4" hole with mud or air to approximately 950' and run 10 3/4" casing. Will cement to surface and test casing with cementing head to 600 psi. Will reduce hole to 9 1/2" and drill on mud or air to approximately 1600' and run 7 5/8" casing if circulation has been lost and cement with sufficient amounts to tie-back to 10 3/4" casing. Will then reduce hole to 6 1/2" or 6 1/4", test BOP's and casing and drill to total depth. If hole conditions are favorable, the 7 5/8" casing will be omitted and the hole will be reduced to 7 7/8" and drilled to total depth. Either 4 1/2" or 5 1/2" casing will be run as production casing depending upon hole size drilled to TD.

Operator's gas sales are dedicated.

Noted A.P.S.  
AD-12 12/1/82  
11-11-83

XC: ~~MS-1 (0+6)~~ CEN RCDS, ACCTG, OPS (FILE), MIDLAND, ROSWELL, PARTNERS

IN ABOVE SPACE DESCRIBE PROPOSED PROGRAM: If proposal is to deepen or plug back, give data on present productive zone and proposed new productive zone. If proposal is to drill or deepen directionally, give pertinent data on subsurface locations and measured and true vertical depths. Give blowout preventer program, if any.

## 24.

SIGNED

R. E. Markis

TITLE

Regulatory Coordinator

DATE

12-30-82

(This space for Federal or State office use)

PERMIT NO.

APPROVAL DATE

APPROVED BY

A. H. Lipp

TITLE

DATE

11/2/83

CONDITIONS OF APPROVAL, IF ANY:

APPROVAL SUBJECT TO  
GENERAL REQUIREMENTS AND  
SPECIAL STIPULATIONS  
ATTACHED

All distances must be from the outer boundaries of the Section.

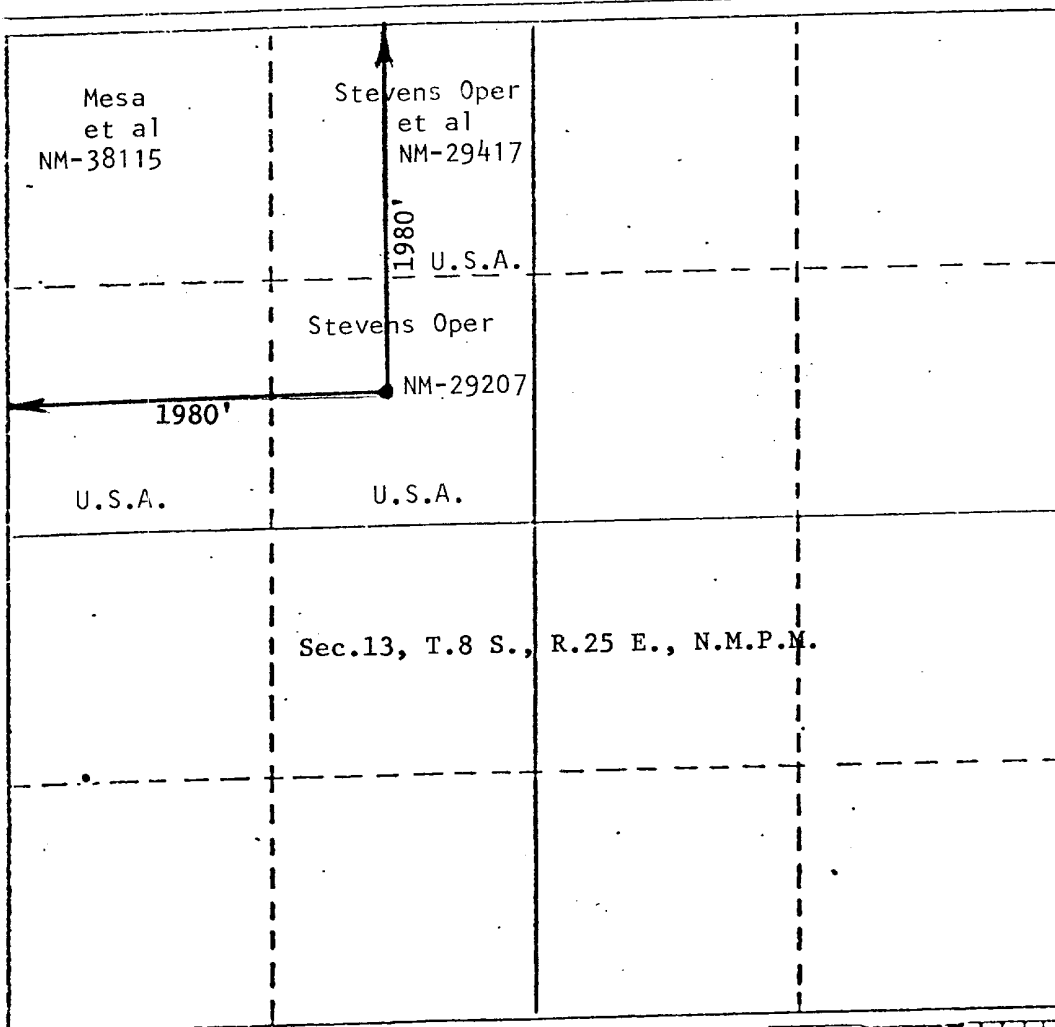
Operator <b>Mesa Petroleum Co.</b>		Lease <b>Francis Federal Com</b>		Well No. <b>#1</b>
Unit Letter <b>F</b>	Section <b>13</b>	Township <b>8 South</b>	Range <b>25 East</b>	County <b>Chaves</b>
Actual Postage Location of Well:				
1980 feet from the North line and		1980 feet from the West line		Dedicated Acreage:
Ground Level Elev. <b>3546</b>	Producing Formation <b>ABO</b>	Pool <b>Unders. Pecos Slope ABO</b>		NW 1/4 160 Acres

1. Outline the acreage dedicated to the subject well by colored pencil or hatchure marks on the plat below.
2. If more than one lease is dedicated to the well, outline each and identify the ownership thereof (both as to working interest and royalty).
3. If more than one lease of different ownership is dedicated to the well, have the interests of all owners been consolidated by communitization, unitization, force-pooling, etc?

☐ Yes ☐ No If answer is "yes," type of consolidation Communitization in progress

If answer is "no," list the owners and tract descriptions which have actually been consolidated. (Use reverse side of this form if necessary.)

No allowable will be assigned to the well until all interests have been consolidated (by communitization, unitization, forced-pooling, or otherwise) or until a non-standard unit, eliminating such interests, has been approved by the Division.



# CERTIFICATION

I hereby certify that the information contained herein is true and complete to the best of my knowledge and belief.

Name  
**R. E. Mathis**

Position  
**Regulatory Coordinator**

Company  
**Mesa Petroleum Co.**

Date  
**12-30-82**

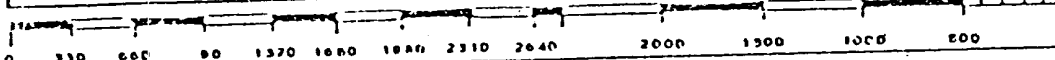
I hereby certify that the well location shown on this plot was plotted from field notes of actual surveys made by me or under my supervision, and that the same is true and correct to the best of my knowledge and belief.

Date Surveyed  
**June 21, 1982**

Registered Professional Engineer and/or Land Surveyor  
**John D. Jaou**

Certificate No.  
**6290**

**PROFESSIONAL ENGINEER L.S.**



APPLICATION FOR PERMIT TO DRILL

MESA PETROLEUM CO.  
Francis Fed Com #1  
1980' FNL & 1980' FWL, Sec 13, T8S, R25E  
CHAVES COUNTY, NEW MEXICO

LEASE NO. NM-29207

In conjunction with Form 9331-C, Application For Permit to Drill subject well, the following additional information is provided:

1. Applicable portions of the GENERAL REQUIREMENTS FOR OIL AND GAS OPERATIONS ON FEDERAL LEASES, Roswell District, Geological Survey of September 1, 1980 will be adhered to.

2. Geological markers are estimated as follows:

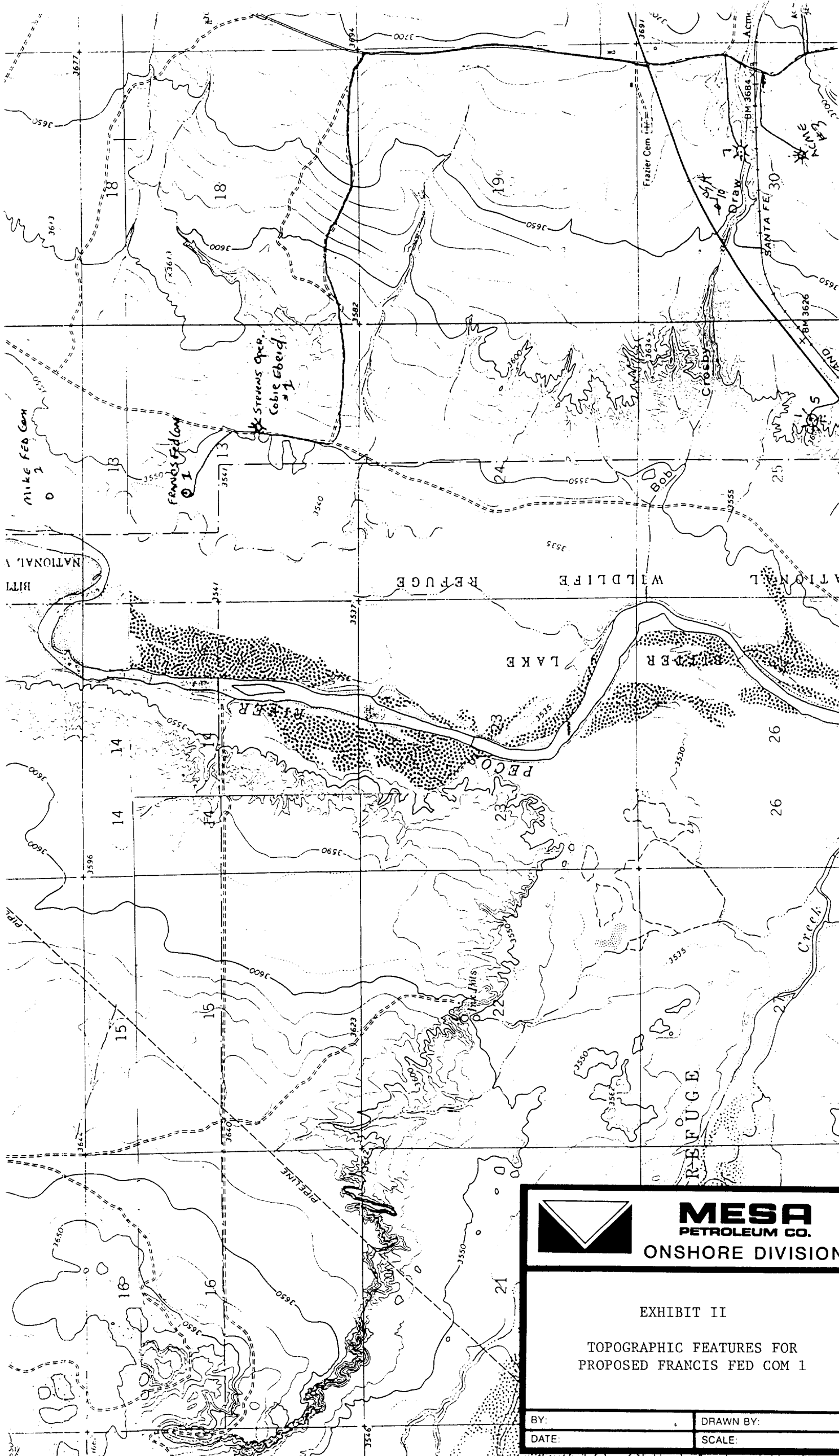
SEVEN RIVERS	Surface
SAN ANDRES	702'
GLORIETA	1740'
TUBB	3040'
ABO	3760'

3. Hydrocarbon bearing strata may occur in the Abo formation (s). No fresh water is expected to be encountered below 950'.

4. The Casing and Blowout Preventer Program will be determined by hole conditions as encountered. See Exhibit VI. Anticipate drilling with mud, air or foam using ram type preventer and rotating head for well control. The 10 3/4" casing will be set at approximately 950' to protect any fresh water zones and cemented to the surface. The 7 5/8" casing will be set at approximately 1600' if water zones have been encountered or omitted if not and ram type preventers installed. Sufficient amounts and kinds of cement would be used to ensure any water, gas, or oil zones encountered are isolated and shut off down to the casing point if run. The 4 1/2" production casing will be set at total depth or shallower depending upon the depth of the deepest commercial hydrocarbon bearing strata encountered.

5. No drill stem test or coring program is planned. The logging program may consist of a GR-CNL from surface total depth and FDC from casing point to total depth.

6. Anticipated drilling time is ten days with completion operations to follow as soon as a completion unit is available.



**MESA**  
PETROLEUM CO.  
ONSHORE DIVISION

EXHIBIT II

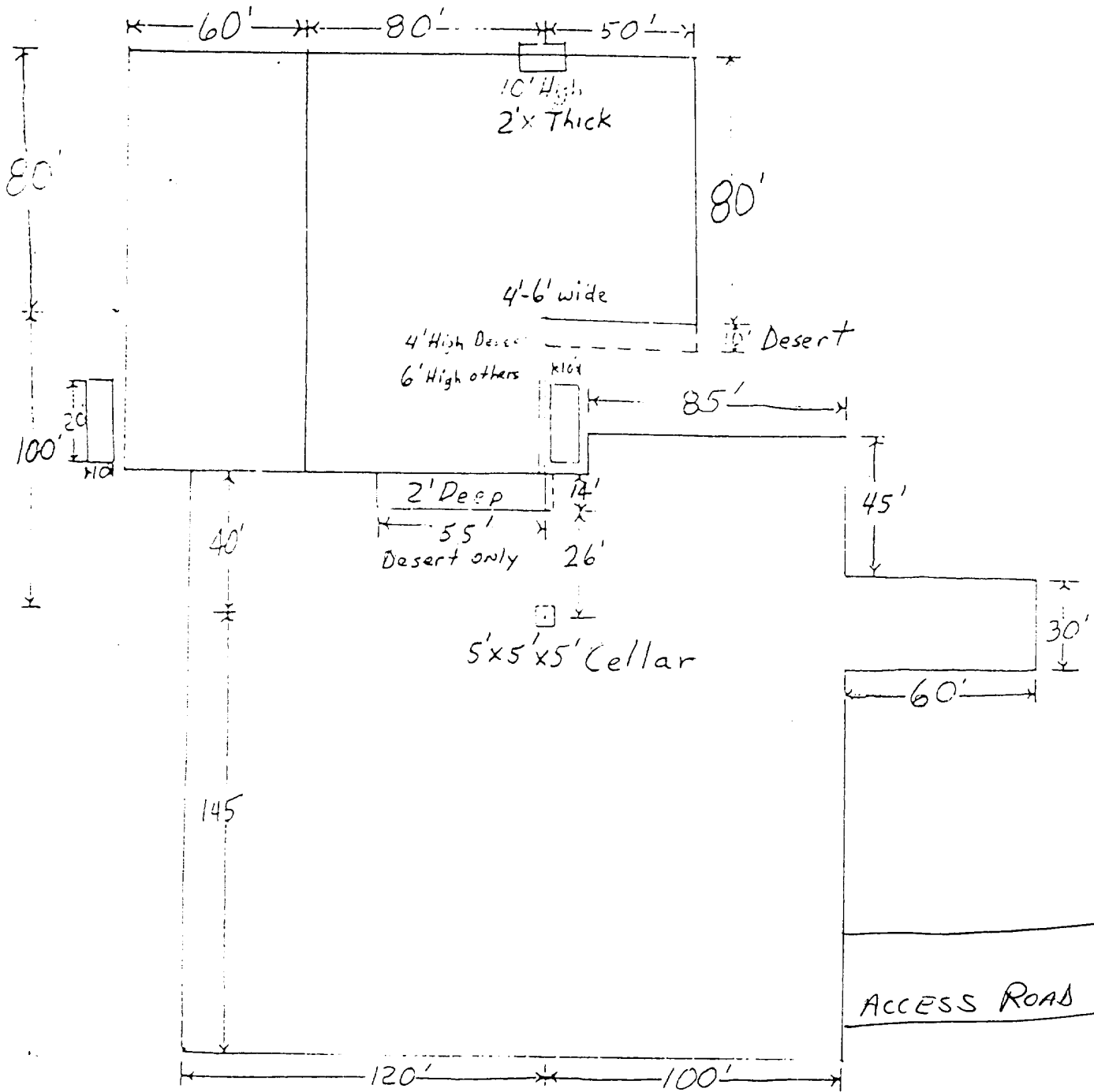
TOPOGRAPHIC FEATURES FOR  
PROPOSED FRANCIS FED COM 1

BY:

DRAWN BY:

DATE:

SCALE:



6"-8" Watered & Compacted Caliche  
ON PAD & ROAD IF NEEDED



**MESA**  
PETROLEUM CO.  
ONSHORE DIVISION

EXHIBIT V

FOR PROPOSED FRANCIS FED COM 1

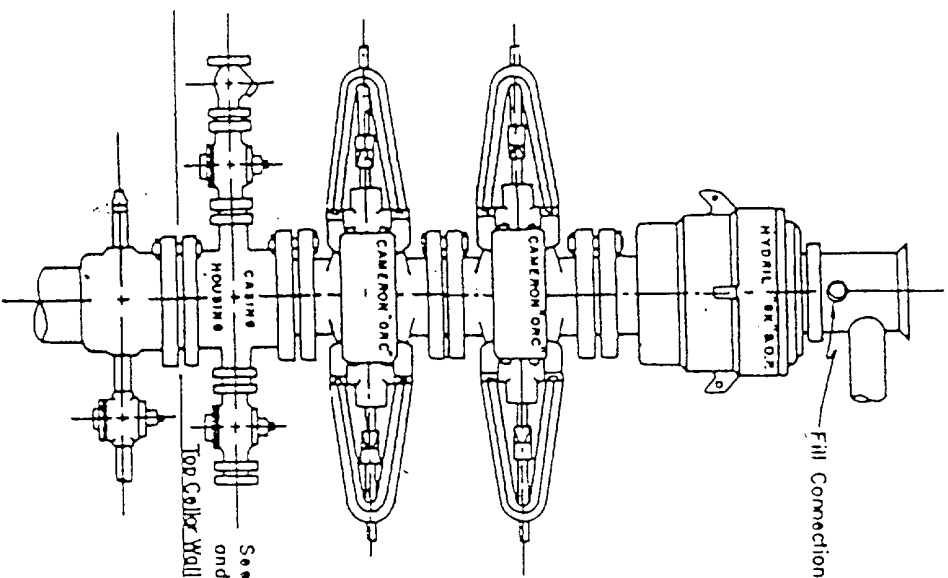
BY:

DRAWN BY:

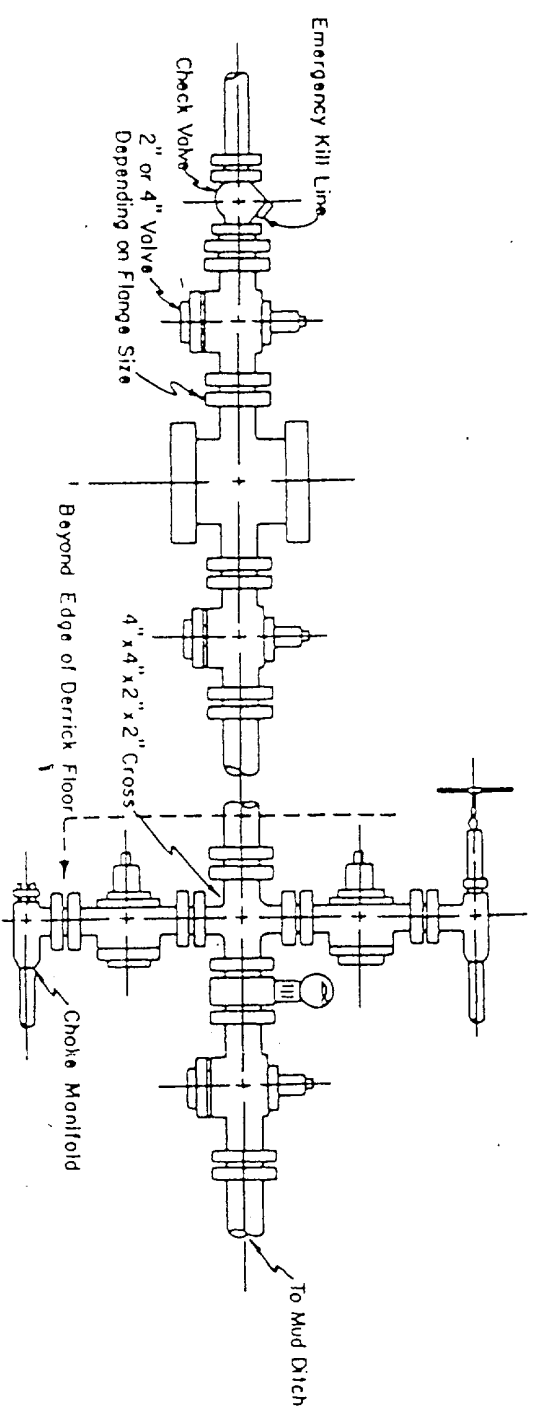
DATE:

SCALE:

# Blow-out Preventers hydril and choke manifold are all 900 Series



3,000 PSI WORKING PRESSURE  
BLOW-OUT PREVENTER HOOK-UP



3,000 PSI WORKING PRESSURE  
KILL, CHOKE, AND FILL CONNECTIONS

DETAIL OF 4" FLOW LINE CHOKE ASSEMBLY

Minimum assembly for 3,000 PSI working pressure will consist of three preventers.  
The bottom and middle preventers may be Cameron.

NOTE: HYDRIL not installed on shallow-low pressure wells.  
RAM type BOPs are API 10" X 3000 PSI



**MESA**  
PETROLEUM CO.  
ONSHORE DIVISION

E X H I B I T  
V I

BY: \_\_\_\_\_ DRAWN BY: \_\_\_\_\_

DATE: \_\_\_\_\_ SCALE: \_\_\_\_\_