

30-005-62066

UNITED STATES
DEPARTMENT OF THE INTERIOR
GEOLOGICAL SURVEY

APPLICATION FOR PERMIT TO DRILL, DEEPEN, OR PLUG BACK

1a. TYPE OF WORK

DRILL ☒DEEPEN ☐ RECEIVED BY PLUG BACK ☐

b. TYPE OF WELL

OIL
WELL ☐GAS
WELL ☒

OTHER

NOV 16 1983

SINGLE
MULTIPLE
ZONE ☐

2. NAME OF OPERATOR

McClellan Oil Corporation ✓

3. ADDRESS OF OPERATOR

P.O. Drawer 730, Roswell, N.M.

4. LOCATION OF WELL (Report location clearly and in accordance with any State requirements.)*

At Surface 1980' FNL & 660' FEL

At proposed prod. zone

14. DISTANCE IN MILES AND DIRECTION FROM NEAREST TOWN OR POST OFFICE*

12 miles east of Roswell, N.M.

15. DISTANCE FROM PROPOSED*

LOCATION TO NEAREST
PROPERTY OR LEASE LINE, FT.
(Also to nearest drlg. unit line, if any)

660'

16. NO. OF ACRES IN LEASE

1872.48

18. DISTANCE FROM PROPOSED LOCATION*
TO NEAREST WELL, DRILLING, COMPLETED,
OR APPLIED FOR, ON THIS LEASE, FT.

N/A

19. PROPOSED DEPTH

4475'

17. NO. OF ACRES ASSIGNED
TO THIS WELL

160

20. ROTARY OR CABLE TOOLS

Rotary

21. ELEVATIONS (Show whether DF, RT, GR, etc.)

3614' G.L.

22. APPROX. DATE WORK WILL START*

Nov. 15, 1983

23. PROPOSED CASING AND CEMENTING PROGRAM

SIZE OF HOLE	SIZE OF CASING	WEIGHT PER FOOT	SETTING DEPTH	QUANTITY OF CEMENT
12-1/4"	8-5/8"	23	900	500 sx
7-7/8"	4-1/2"	10.5	4475	350 sx

Propose to drill to test Abo formation at approximately 4475'. If production is indicated, casing will be ran and completion attempted.

Mud Program: Will drill to top of Abo with native mud. Will mud up with sand gel with 35 vis, 20 water loss and 9.8 lb/gal weight.

Gas is dedicated.

IN ABOVE SPACE DESCRIBE PROPOSED PROGRAM: If proposal is to deepen or plug back, give data on present productive zone and proposed new productive zone. If proposal is to drill or deepen directionally, give pertinent data on subsurface locations and measured and true vertical depths. Give blowout preventer program, if any.

24.

SIGNED

Paul Ragsdale

TITLE Operations Manager

DATE Oct. 20, 1983

(This space for Federal or State office use)

PERMIT NO.

APPROVAL DATE

APPROVED BY

A. C. Hays

TITLE

DATE

11/4/83

CONDITIONS OF APPROVAL, IF ANY:

*See Instructions On Reverse Side

APPROVAL SUBJECT TO
GENERAL REQUIREMENTS AND
SPECIAL STIPULATIONS
ATTACHED

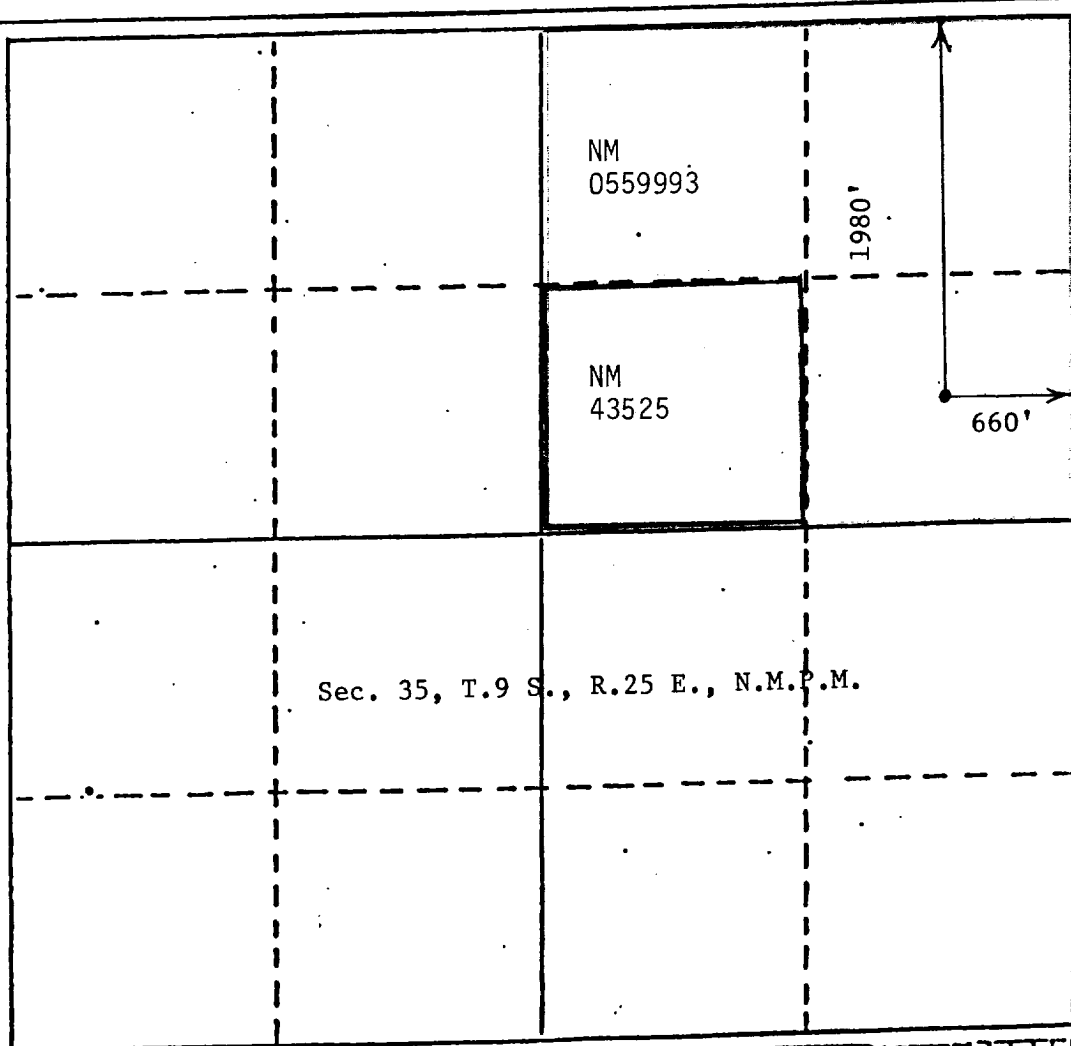
All distances must be from the outer boundaries of the Section.

Operator McClellan Oil Corp.			Lease M M Federal <i>com</i>		Well No. #2
Unit Letter H	Section 35	Township 9 South	Range 25 East	County Chaves	
Actual Postage Location of Well: 1980 feet from the North line and 660 feet from the East line					
Ground Level Elev. 3614	Producing Formation Abo		Pool South Pecos Slope <i>ABO</i>		Dedicated Acreage: 160 Acres

1. Outline the acreage dedicated to the subject well by colored pencil or hachure marks on the plat below.
2. If more than one lease is dedicated to the well, outline each and identify the ownership thereof (both as to working interest and royalty).
3. If more than one lease of different ownership is dedicated to the well, have the interests of all owners been consolidated by communitization, unitization, force-pooling, etc?

☒ Yes ☐ No If answer is "yes," type of consolidation Communitization

If answer is "no," list the owners and tract descriptions which have actually been consolidated. (Use reverse side of this form if necessary.)
No allowable will be assigned to the well until all interests have been consolidated (by communitization, unitization, forced-pooling, or otherwise) or until a non-standard unit, eliminating such interests, has been approved by the Division.



CERTIFICATION

I hereby certify that the information contained herein is true and complete to the best of my knowledge and belief.

Paul Ragsdale

Name
Paul Ragsdale

Position
Operations Manager

Company
McClellan Oil Corporation

Date
October 19, 1983

I hereby certify that the well location shown on this plat was plotted from field notes of actual surveys made by me or under my supervision, and that the same is true and correct to the best of my knowledge and belief.

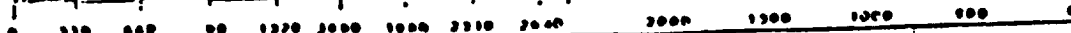


Date Surveyed
October 17, 1983

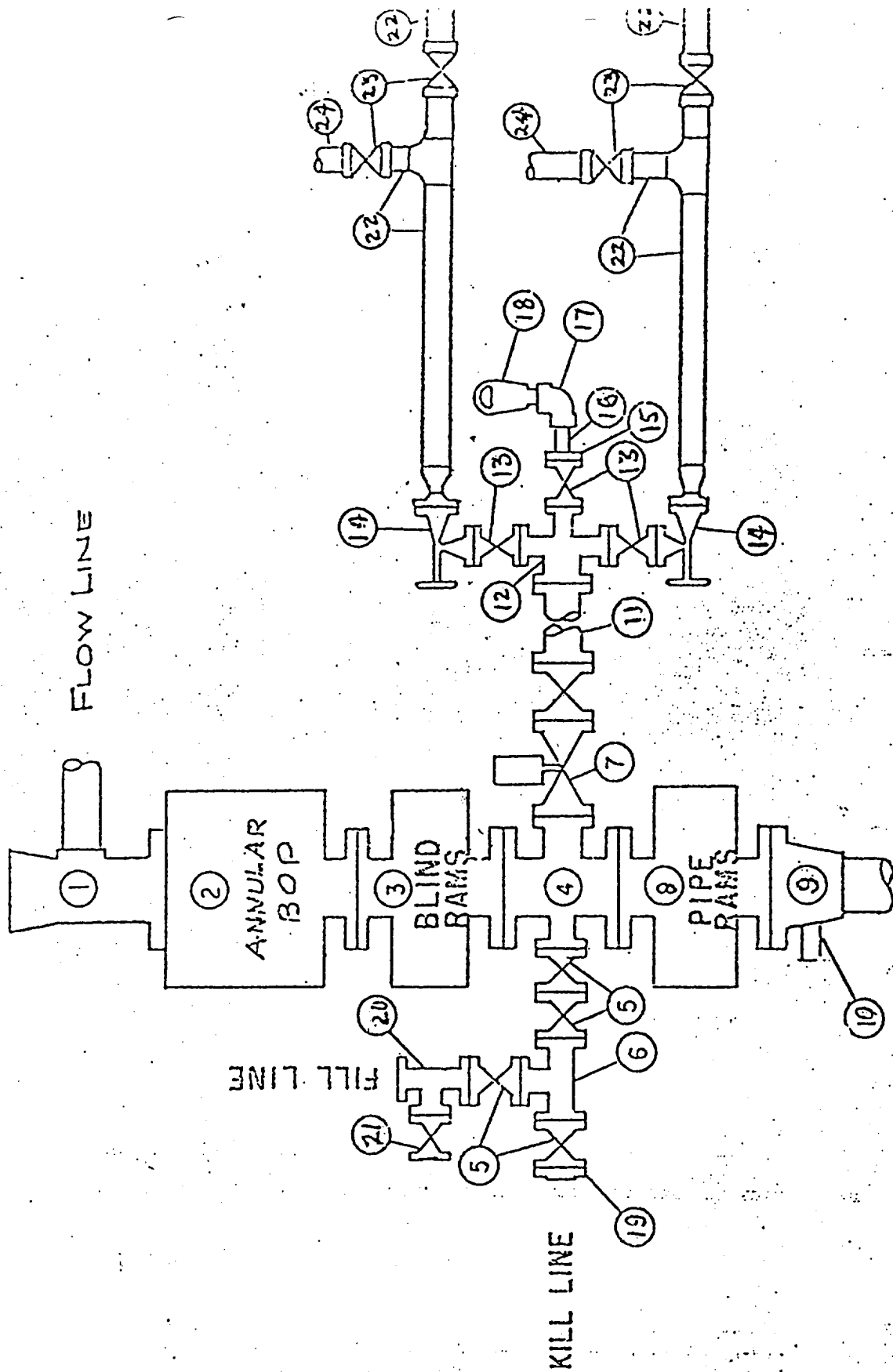
Registered by the State of New Mexico and/or the Federal Government

John D. Jaquess
John D. Jaquess, P.E. & L.S.

Certificate No.
6290



BLOWOUT PREVENTER SPECIFICATION



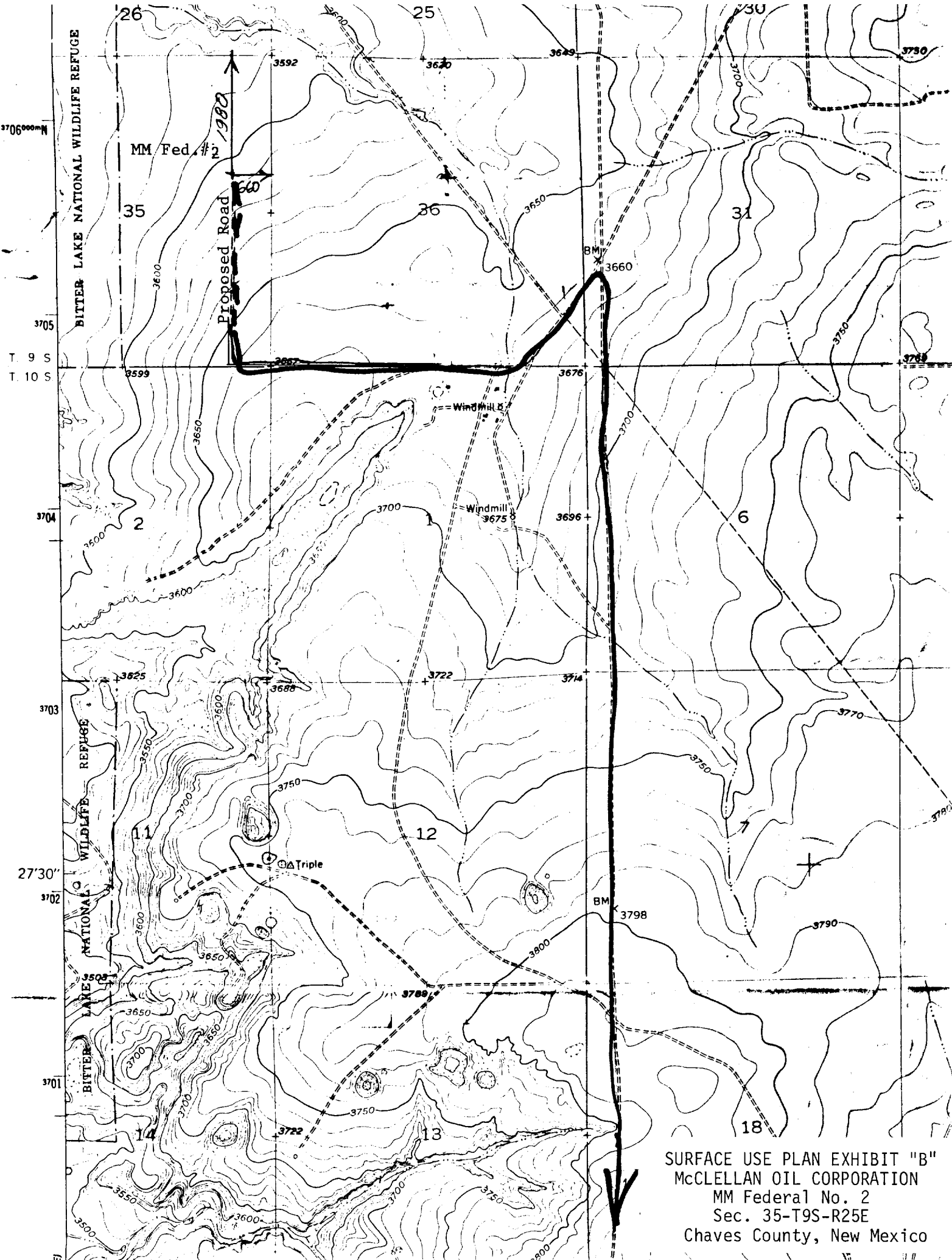
SURFACE USE PLAN EXHIBIT "E"
 McCLELLAN OIL CORPORATION
 MM Federal No. 2
 Sec. 35-T9S-R25E
 Chaves County, New Mexico

McCLELLAN OIL CORPORATION MM Federal #2
REQUIREMENTS
(NTL-6)

1. Location: Sec. 35-T9S-R25E, 1980' FNL & 660' FEL
2. Elevation: 3614' G.L.
3. Geologic name of surface formation: See Archaeological Report
4. Type of drilling rig and associated equipment: Rotary
5. Proposed drilling depth and objective formation: 4475' Abo
6. Estimated tops of geologic markers:

Yates _____	San Andres <u>550</u>	Abo <u>3880</u>
7-Rivers _____	Glorieta <u>1650</u>	Wolfcamp _____
Queen _____	Tubb <u>3140</u>	_____
7. Estimated depths of any oil, water, or gas: 3880 - 4475
Dry gas
- 8-9. Proposed casing program:

<u>8-5/8"</u> @ <u>900'</u> Grade <u>H-40</u> Wt. <u>23</u> Type Cement <u>Class "C"</u>
<u>4-1/2"</u> @ <u>4475'</u> Grade <u>J-55</u> Wt. <u>10.5</u> Type Cement <u>Class "C", 50/50 Poz</u>
<u> "</u> @ <u> '</u> Grade <u> </u> Wt. <u> </u> Type Cement <u> </u>
10. Specifications for pressure control equipment and testing procedures: Schaeffer type E 10" Series 900 hydraulic BOP
11. Type and characteristics of drilling fluids: Native Mud to top of Abo.
Mud up with Salt gel:: 20cc water loss, 35 visc and 9.8 lb/gal weight
12. Testing, logging, and coring programs: No testing or coring anticipated
Logging Program: CNL-LDT, DLL-gamma Ray
13. Anticipated abnormal pressures or temperature: None
14. Anticipated commencement and completion date: Nov. 15 - Nov. 30
15. Other pertinent information: _____



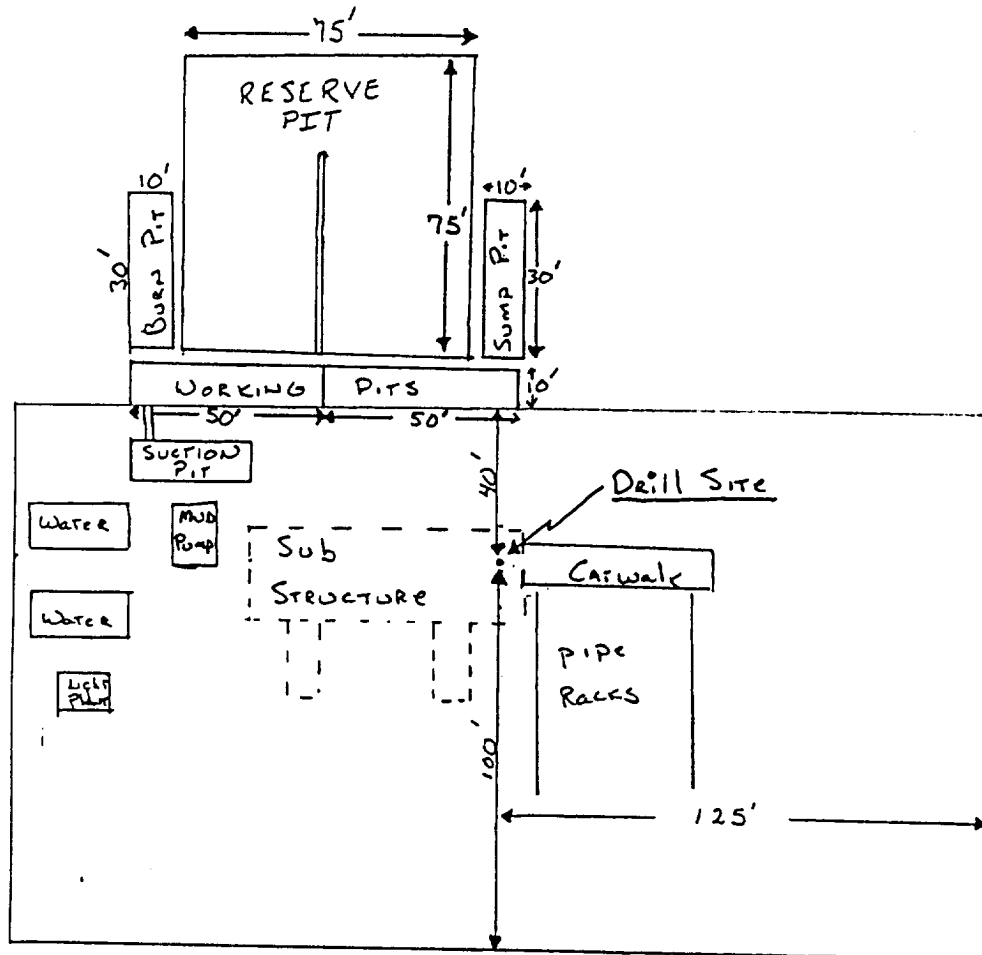
SURFACE USE PLAN EXHIBIT "B"
McCLELLAN OIL CORPORATION
MM Federal No. 2
Sec. 35-T9S-R25E
Chaves County, New Mexico

McCLELLAN OIL CORPORATION
SUGGESTED PAD DIMENSIONS

Reserve Pits 4 ft. deep, plastic lined

Working pits 5 ft. deep

No cellar



Scale 1" = 50'