

RECEIVED D1

DEC 13 1983

UNITED STATES
DEPARTMENT OF THE INTERIOR
ARTESIA, OFFICE
GEOLOGICAL SURVEYSUBMIT IN TRIPLICATE*
(Other instructions on reverse side)Form approved.
Budget Bureau No. 42-R1425.

30-005-62067

5. LEASE DESIGNATION AND SERIAL NO.

NM-51830

6. IF INDIAN, ALLOTTEE OR TRIBE NAME

7. UNIT AGREEMENT NAME

8. FARM OR LEASE NAME

Ruth "XK" Federal

9. WELL NO.

10. FIELD AND POOL, OR WILDCAT

Pecos Slope Abo

11. SEC., T., R., M., OR BLK.
AND SURVEY OR AREA

Sec. 1-T7S-R25E

12. COUNTY OR PARISH

Chaves

13. STATE

NM

1a. TYPE OF WORK

DRILL ☒DEEPEN ☐PLUG BACK ☐

b. TYPE OF WELL

OIL
WELL ☐GAS
WELL ☒

OTHER

2. NAME OF OPERATOR

Yates Petroleum Corporation

3. ADDRESS OF OPERATOR

207 S. 4th, Artesia, New Mexico.

4. LOCATION OF WELL (Report location clearly and in accordance with any State or Federal requirements.)

At surface

2180' FSL and 1980' FEL

ROSWELL, NEW MEXICO

At proposed prod. zone

same

14. DISTANCE IN MILES AND DIRECTION FROM NEAREST TOWN OR POST OFFICE*

32 miles NE of Roswell, NM.

15. DISTANCE FROM PROPOSED*

LOCATION TO NEAREST
PROPERTY OR LEASE LINE, FT.
(Also to nearest drlg. unit line, if any)

1500'

16. NO. OF ACRES IN LEASE

40

17. NO. OF ACRES ASSIGNED
TO THIS WELL

160

18. DISTANCE FROM PROPOSED LOCATION*
TO NEAREST WELL, DRILLING, COMPLETED,
OR APPLIED FOR, ON THIS LEASE, FT.

800'

19. PROPOSED DEPTH

4225'

20. ROTARY OR CABLE TOOLS

Rotary

21. ELEVATIONS (Show whether DF, RT, GR, etc.)

3679' GL

22. APPROX. DATE WORK WILL START*

ASAP

23.

PROPOSED CASING AND CEMENTING PROGRAM

SIZE OF HOLE	SIZE OF CASING	WEIGHT PER FOOT	SETTING DEPTH	QUANTITY OF CEMENT
14 3/4"	10 3/4"	40.5# J-55	825'	750 sx circulated
7 7/8"	4 1/2"	9.5# J-55	TD	350 sx

We propose to drill and test the Abo and intermediate formations. Approximately 825' of surface casing will be set and cement circulated to shut off gravel and caving. If needed (lost circulation) 8 5/8" intermediate casing will be run to 1500' and cemented with enough cement calculated to tie back into the surface casing. If commercial, production casing will be run and cemented with adequate cover, perforated and stimulated as needed for production.

MUD PROGRAM: FW gel/LCM to 825', Brine to 3200', Brine/KCL water to TD.

BOP PROGRAM: BOP's will be installed at the offset and tested daily.

GAS NOT DEDICATED.

IN ABOVE SPACE DESCRIBE PROPOSED PROGRAM: If proposal is to deepen or plug back, give data on present productive zone and proposed new productive zone. If proposal is to drill or deepen directionally, give pertinent data on subsurface locations and measured and true vertical depths. Give blowout preventer program, if any.

24.

SIGNED

*Cy Cowan*TITLE Regulatory AgentDATE 6/13/83

(This space for Federal or State office use)

PERMIT NO.

APPROVAL DATE

APPROVED BY

*S/Richard Bastin*TITLE Associate District Manager

DATE

DEC 09 1983

CONDITIONS OF APPROVAL, IF ANY:

APPROVAL SUBJECT TO
GENERAL REQUIREMENTS AND
SPECIAL STIPULATIONS
ATTACHED

ST. JOHN'S UNIVERSITY
NEW YORK, N.Y. 10044
LIBRARY

**NEW MEXICO OIL CONSERVATION COMMISSION
WELL LOCATION AND ACREAGE DEDICATION PLAT**

Form C-102
Supersedes C-128
Effective 1-1-65

All distances must be from the outer boundaries of the Section.

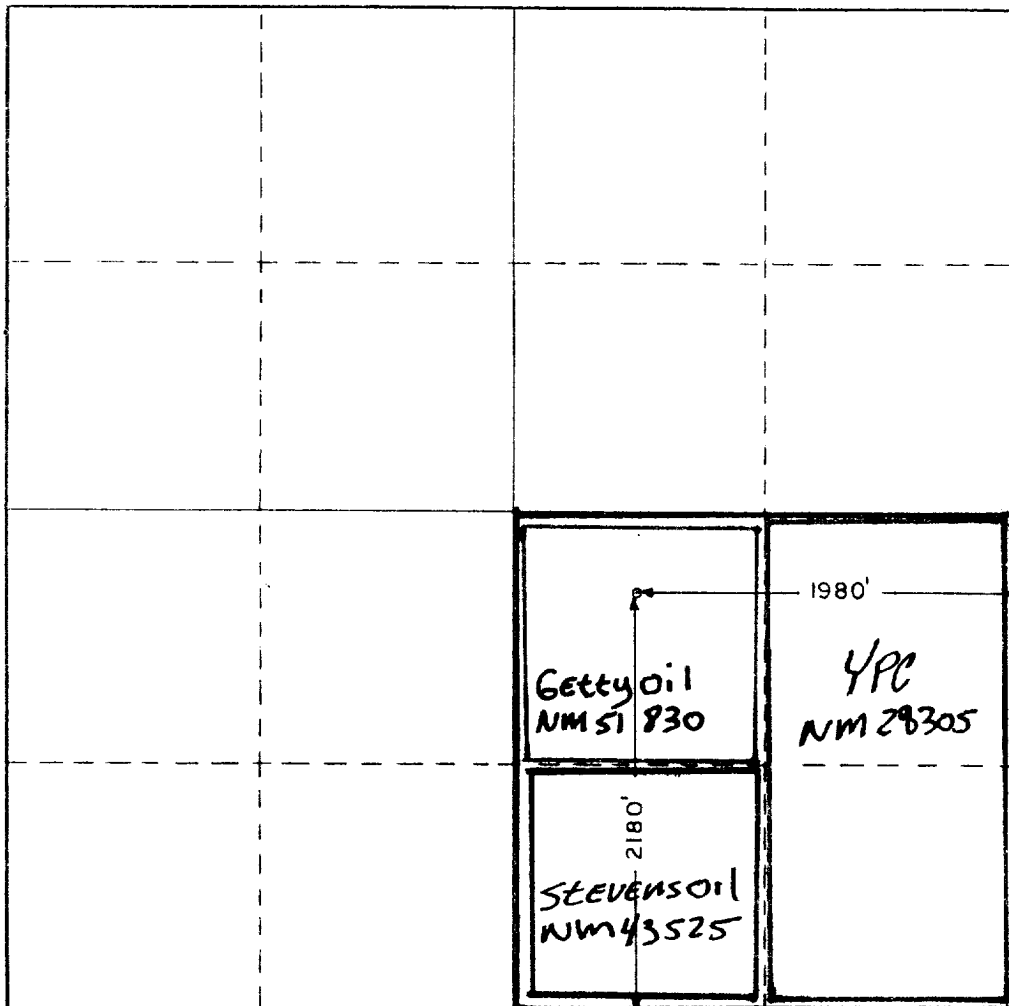
Operator YATES PETROLEUM CORPORATION			Lease Ruth "XK" Federal		Well No. 1
Unit Letter 3	Section 1	Township 7 South	Range 25 East	County Chaves	
Actual Footage Location of Well: 2180 feet from the South line and 1980 feet from the East line					
Ground Level Elev. 3679.8	Producing Formation ABO		Pool PECOS Slope ABO	Dedicated Acreage: 160 Acres	

1. Outline the acreage dedicated to the subject well by colored pencil or hachure marks on the plat below.
2. If more than one lease is dedicated to the well, outline each and identify the ownership thereof (both as to working interest and royalty).
3. If more than one lease of different ownership is dedicated to the well, have the interests of all owners been consolidated by communitization, unitization, force-pooling, etc?

☒ Yes ☐ No If answer is "yes," type of consolidation **TO BE COMMUNITIZED**

If answer is "no," list the owners and tract descriptions which have actually been consolidated. (Use reverse side of this form if necessary.) _____

No allowable will be assigned to the well until all interests have been consolidated (by communitization, unitization, force-pooling, or otherwise) or until a non-standard unit, eliminating such interests, has been approved by the Commission.



CERTIFICATION

I hereby certify that the information contained herein is true and complete to the best of my knowledge and belief.

Cy Cowan
Name
Regulatory Agent
Position
Yates Petroleum Corp
Company

6-8-83
Date

I hereby certify that the well location shown on this plat was plotted from field notes of actual surveys made by me or under my supervision, and that the same is true and correct to the best of my knowledge and belief.

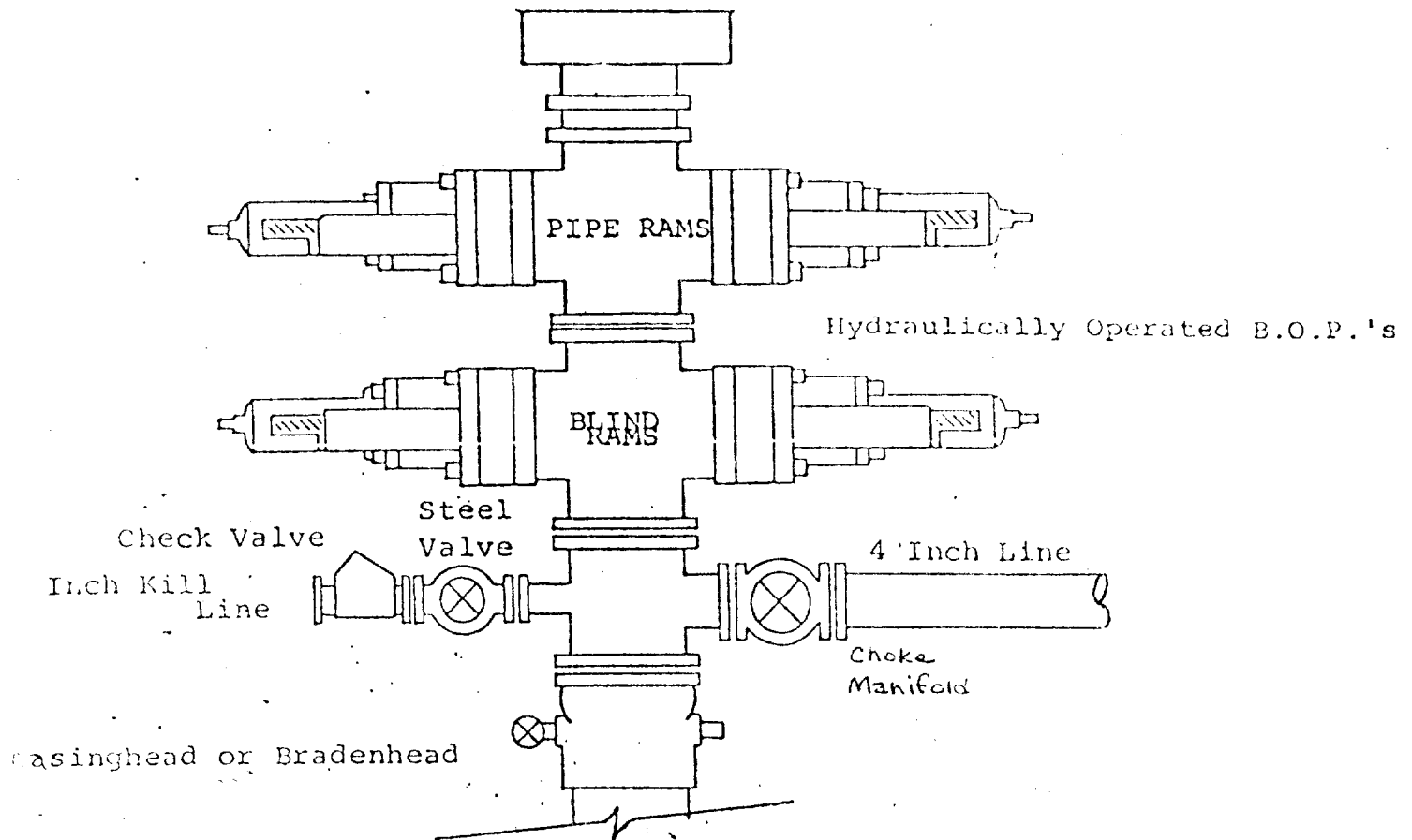
Date Surveyed
6/3/83

Registered Professional Engineer
and/or Land Surveyor

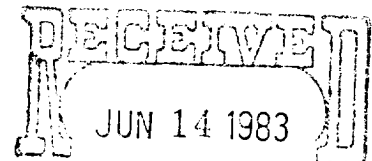
Amey Q. Shaw
Certificate No. **7977**

0 330 660 990 1320 1650 1980 2310 2640 2970 3300 3630 3960 4290 4620 4950 5280 5610 5940 6270 6600

EXHIBIT B
BDP DIAGRAM



YATES PETROLEUM CORPORATION
RUTH "XK" FEDERAL #1
2180' FSL AND 1980' FEL
SEC. 1-T7S-R25E
CHAVES, NEW MEXICO



OIL & GAS
ROSWELL, NEW MEXICO

IN CONJUNCTION WITH FORM 9-331C, APPLICATION FOR PERMIT TO DRILL SUBJECT WELL, YATES PETROLEUM CORPORATION SUBMITS THE FOLLOWING TEN ITEMS OF PERTINENT INFORMATION IN ACCORDANCE WITH USGS REQUIREMENTS.

1. THE GEOLOGIC SURFACE FORMATION IS SANDY ALLVIUM.
2. THE ESTIMATED TOPS OF GEOLOGIC MARKERS ARE AS FOLLOWS:

SAN ANDRES	517'
GLORIETA	1617'
FULLERTON	3028'
ABO	3667'
TD	4225'
3. THE ESTIMATED DEPTHS AT WHICH ANTICIPATED WATER, OIL OR GAS FORMATIONS ARE EXPECTED TO BE ENCOUNTERED:

WATER: 250'-350'

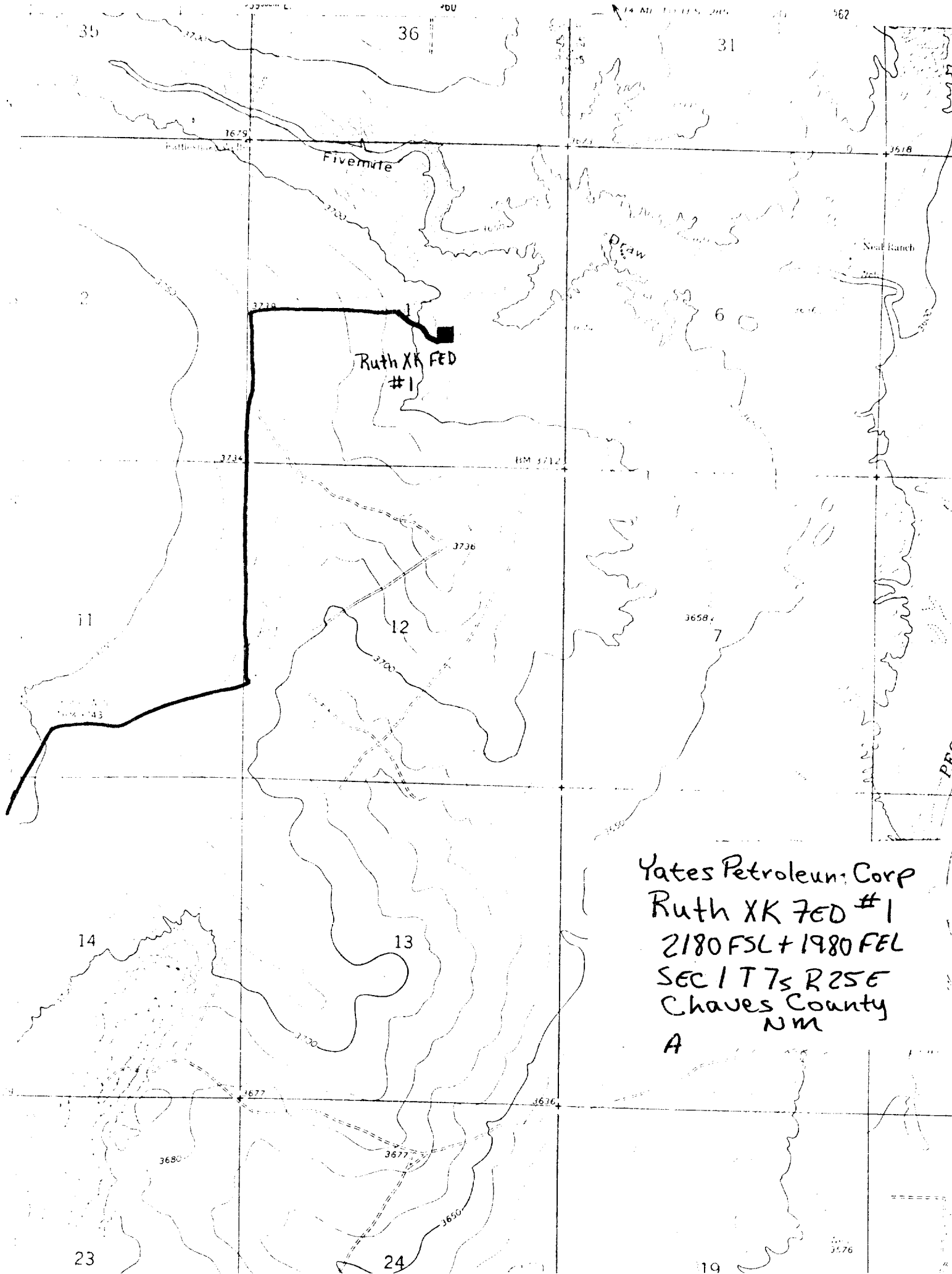
OIL OR GAS: ABO 3700'
4. PROPOSED CASING PROGRAM: SEE FORM 9-331C.
5. PRESSURE CONTROL EQUIPMENT: SEE FORM 9-331C.
6. MUD PROGRAM: SEE FORM 9-331C.
7. AUXILIARY EQUIPMENT: KELLY COCK; PIT LEVEL INDICATORS AND FLOW SENSOR EQUIPMENT; SUB WITH FULL-OPENING VALVE ON FLOOR, DRILL PIPE CONNECTION.
8. TESTING, LOGGING AND CORING PROGRAM:

SAMPLES: SURFACE CASING TO TD.

DST'S: AS WARRANTED.

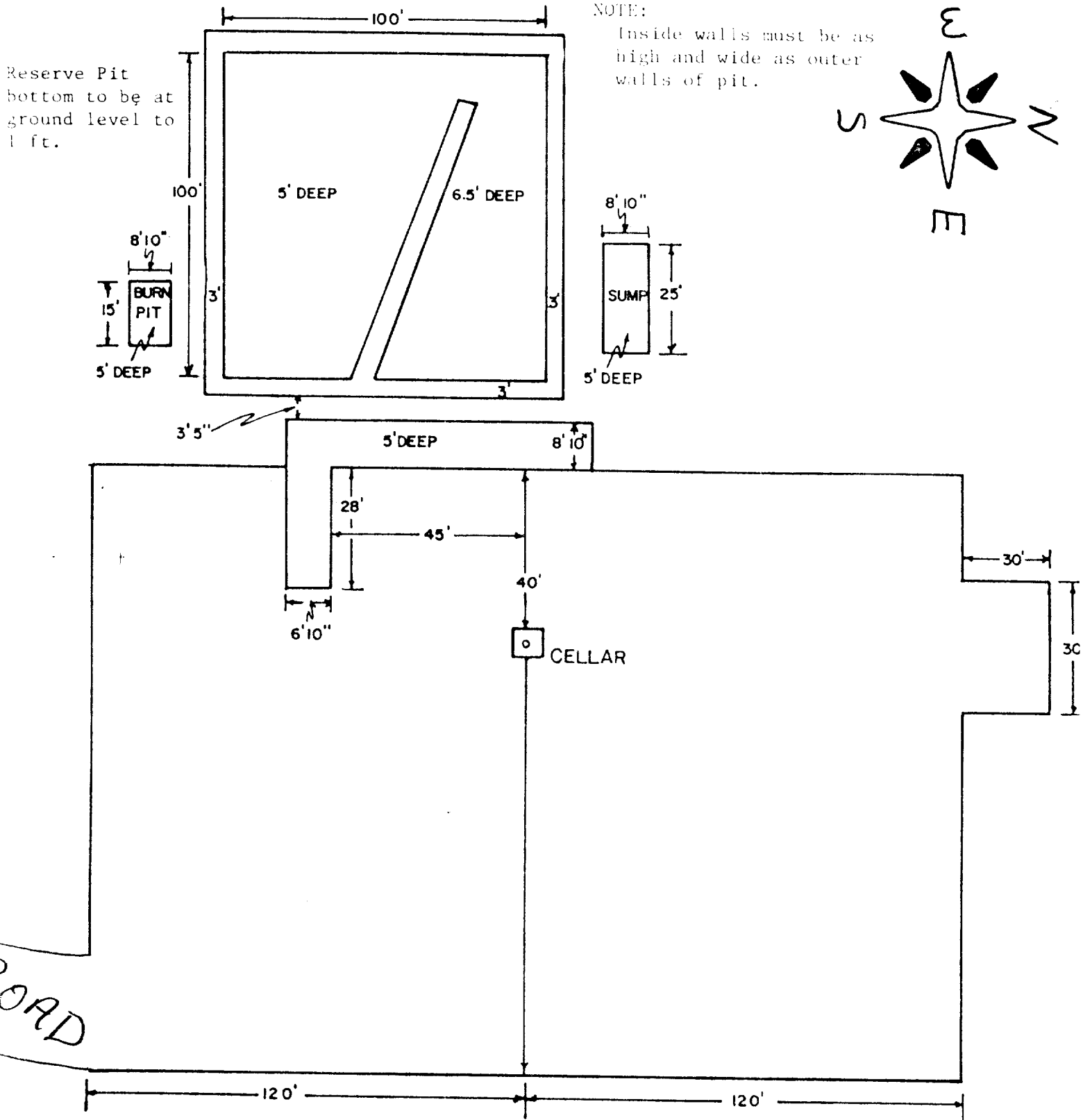
CORING: NONE.

LOGGING: CNL-FIX TD TO CSG W/GR-CNL TO SURFACE & DLL FROM TD TO CSG.
9. NO ABNORMAL PRESSURES OR TEMPERATURES ARE ANTICIPATED.
10. ANTICIPATED STARTING DATE: AS SOON AS POSSIBLE AFTER APPROVAL.



Yates Petroleum Corp
Ruth XK FED #1
2180 FSL + 1980 FEL
SEC 1 T 7 S R 25 E
Chaves County
NM
A

YATES PETROLEUM CORP.
Exhibit C





207 SOUTH FOURTH STREET
ARTESIA, NEW MEXICO 88210

TELEPHONE (505) 748-1331

S. P. YATES
PRESIDENT
MARTIN YATES, III
VICE PRESIDENT
JOHN A. YATES
VICE PRESIDENT
B. W. HARPER
SEC. TREAS.

JUNE 9, 1983

MR. GEORGE STEWART
MINERALS MANAGEMENT SERVICE
FEDERAL BUILDING
ROSWELL, NEW MEXICO 88201

RE: RUTH "XK" FEDERAL #1

DEAR MR. STEWART,

YATES PETROLEUM CORPORATION HAS SUBMITTED AN APPLICATION TO DRILL A WELL ON SURFACE OWNED BY THOMAS S. COOPER, 410 FIRST NATIONAL TOWER, LAS CRUCES, NM. THIS WELL IS LOCATED IN SEC. 1 T7S-R25E 2180' FSL AND 1980' FEL CHAVES COUNTY, NEW MEXICO.

IN A TELEPHONE VISIT WITH MR. COOPER, IT WAS AGREED THAT WE WOULD COMPENSATE HIM MONETARILY FOR THE SURFACE DAMAGES INCURRED. AFTER DRILLING HAS BEEN COMPLETED, THE PIT AREA WILL BE LEVELED AFTER IT IS DRY AND ALONG WITH THE PAD WILL BE LEFT TO RESEED NATURALLY.

SINCERELY,

CY COWAN
REGULATORY AGENT
YATES PETROLEUM CORPORATION

CC/DW