

SUBMIT IN 7 LIGATE*
(Other instructions on
reverse side)Form approved.
Budget Bureau No. 42-R1425.UNITED STATES
DEPARTMENT OF THE INTERIOR
GEOLOGICAL SURVEY

APPLICATION FOR PERMIT TO DRILL, DEEPEN, OR PLUG BACK

1a. TYPE OF WORK

DRILL ☒DEEPEN ☐RECEIVED BY
PLUG BACK ☐

b. TYPE OF WELL

OIL
WELL ☐GAS
WELL ☒OTHER ☐

2. NAME OF OPERATOR

STEVENS OPERATING CORPORATION ✓

3. ADDRESS OF OPERATOR

P. O. BOX 2408, ROSWELL, NM 88201

4. LOCATION OF WELL (Report location clearly and in accordance with any State requirements.)

At surface

660 FNL 660 FEL, Sec 33 T-7-S R-26-E

At proposed prod. zone

Same

14. DISTANCE IN MILES AND DIRECTION FROM NEAREST TOWN OR POST OFFICE*

23.5 air miles northeast of Roswell, NM 88201

15. DISTANCE FROM PROPOSED*

LOCATION TO NEAREST

PROPERTY OR LEASE LINE, FT.

(Also to nearest drig. unit line, if any)

660'

16. NO. OF ACRES IN LEASE

600

17. NO. OF ACRES ASSIGNED

TO THIS WELL

160

18. DISTANCE FROM PROPOSED LOCATION*

TO NEAREST WELL, DRILLING, COMPLETED,
OR APPLIED FOR, ON THIS LEASE, FT.

19. PROPOSED DEPTH

4650'

20. ROTARY OR CABLE TOOLS

Rotary

21. ELEVATIONS (Show whether DF, RT, GR, etc.)

3742.9 GR

22. APPROX. DATE WORK WILL START*

November 23, 1983

23.

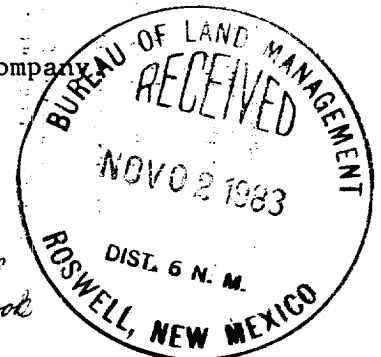
PROPOSED CASING AND CEMENTING PROGRAM

SIZE OF HOLE	SIZE OF CASING	WEIGHT PER FOOT	SETTING DEPTH	QUANTITY OF CEMENT
12 1/4"	8 5/8"	24.0#	800'	Circ to surface
7 7/8"	4 1/2"	10.5#	4650'	Circ to surface

After setting and cementing production string, payzones will be perforated and stimulated as needed for production.

Gas is dedicated under Contract 5303 with Transwestern Pipeline Company.

Attached are: Well Location and Acreage Dedication Plat
Supplemental Drilling Data
Surface Use Plan



IN ABOVE SPACE DESCRIBE PROPOSED PROGRAM: If proposal is to deepen or plug back, give data on present productive zone and proposed new productive zone. If proposal is to drill or deepen directionally, give pertinent data on subsurface locations and measured and true vertical depths. Give blowout preventer program, if any.

24.

SIGNED

TITLE

Production Controller

DATE

November 1, 1983

(This space for Federal or State office use)

PERMIT NO.

APPROVAL DATE

ORIG. SIGNED JAMES A. GILLHAM

TITLE

ASSISTANT District Manager

DATE

11-8-83

APPROVED BY

CONDITIONS OF APPROVAL, IF ANY:

*See Instructions On Reverse Side

APPROVAL SUBJECT TO
GENERAL REQUIREMENTS AND
SPECIAL STIPULATIONS
ATTACHED

NE/ EXICO OIL CONSERVATION COMMISSION
WELL LOCATION AND ACREAGE DEDICATION PLAT

Form C-102
Supersedes C-128
Effective 1-1-65

All distances must be from the outer boundaries of the Section

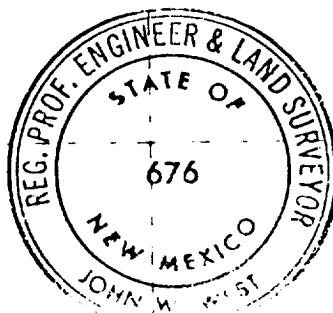
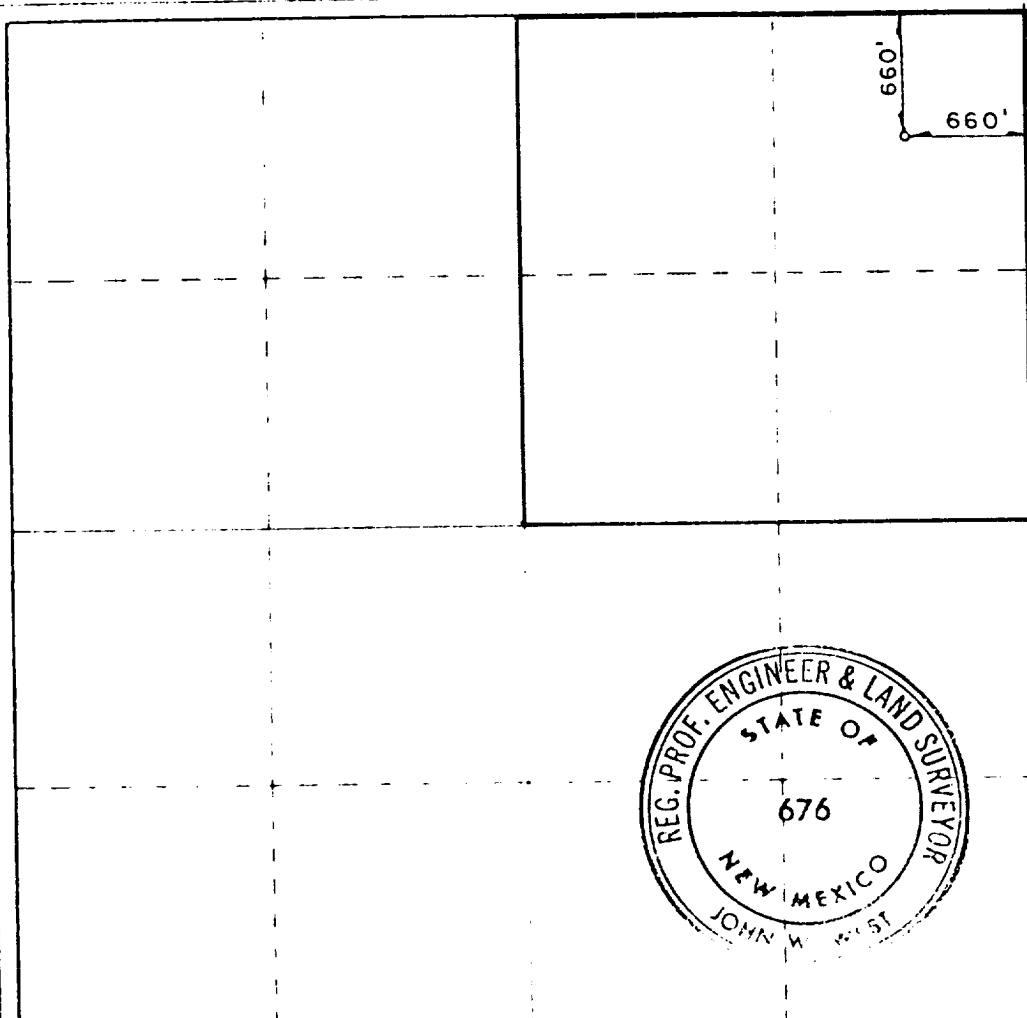
Owner STEVENS OPERATING CO.		Lease NICHOLS-DALE FEDERAL		Well No. 7
Section Letter A	Section 33	Township 7S	Range 26E	County CHAVES
Well Location (Section of Well)				
660 feet from the NORTH		660 feet from the EAST		
Surface Point Elev. 3742.9	Producing Formation Pecos Slope Abo	Zone Pecos Slope Abo	Producing Acreage 160	

- Outline the acreage dedicated to the subject well by colored pencil or hachure marks on the plat below.
- If more than one lease is dedicated to the well, outline each and identify the ownership thereof (both as to working interest and royalty).
- If more than one lease of different ownership is dedicated to the well, have the interests of all owners been consolidated by communitization, unitization, force-pooling, etc?

☐ Yes ☐ No If answer is "yes," type of consolidation _____

If answer is "no," list the owners and tract descriptions which have actually been consolidated (Use reverse side of this form if necessary.) _____

No allowable will be assigned to the well until all interests have been consolidated (by communitization, unitization, forced-pooling, or otherwise) or until a non-standard unit, eliminating such interests, has been approved by the Commission.



CERTIFICATION

I hereby certify that the information contained herein is true and complete to the best of my knowledge and belief.

Signature
Pat Thompson

Position
Production Controller

Company
STEVENS OPERATING CORPORATION

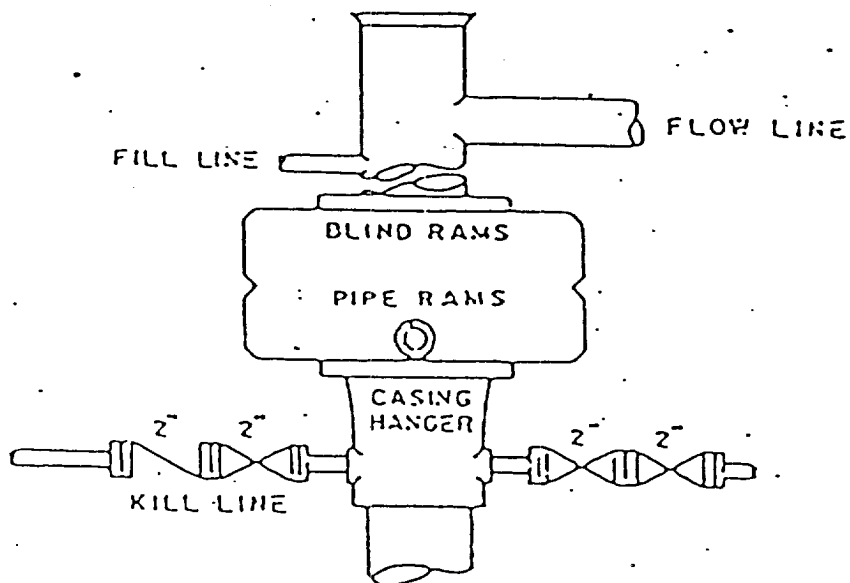
Date
November 1, 1983

I hereby certify that the well location shown on this plat was plotted from field notes of actual surveys made by me or under my supervision, and that the same is true and correct to the best of my knowledge and belief.

Date
12/2/82

Signature
John W. West

License No.
JOHN W. WEST N.M.#676



DUAL RAM-TYPE PREVENTER

900 Series

Blowout Preventer Sketch
 Stevens Operating Corporation
 Well #7 Nichols-Dale Federal
 660' FNL, 660' FEL, SEC. 33, T-7-S, R-26-E
 Chaves County, New Mexico

SUPPLEMENTAL DRILLING DATA

STEVENS OPERATING CORPORATION
WELL #7 NICHOLS-DALE FEDERAL
660' FNL, 660' FEL, SEC. 33, T-7-S, R-26-E
CHAVES COUNTY, NEW MEXICO

1. SURFACE INFORMATION: Permian (Artesia Group).

2. ESTIMATED TOPS OF GEOLOGIC MARKERS:

San Andres	640'	Abo	3890'
Glorietta	1790'		

3. ANTICIPATED POROSITY ZONES:

Water	60'
Oil	1240'
Gas	3890'

4. CASING DESIGN:

<u>Size</u>	<u>Interval</u>	<u>Weight</u>	<u>Grade</u>	<u>Joint</u>	<u>Condition</u>
8 5/8"	0 - 800'	24.0#	K-55	STC	New
4 1/2"	0 - 4650'	10.5#	K-55	STC	New

5. SURFACE CONTROL EQUIPMENT: A double ram-type preventer (900 series). A sketch of BOP stack is attached.

6. CIRCULATING MEDIUM:

0 - 800	Fresh water mud with gel added if needed for viscosity.
800 - TD	Salt water mud, conditioned as necessary for control of viscosity and water loss.

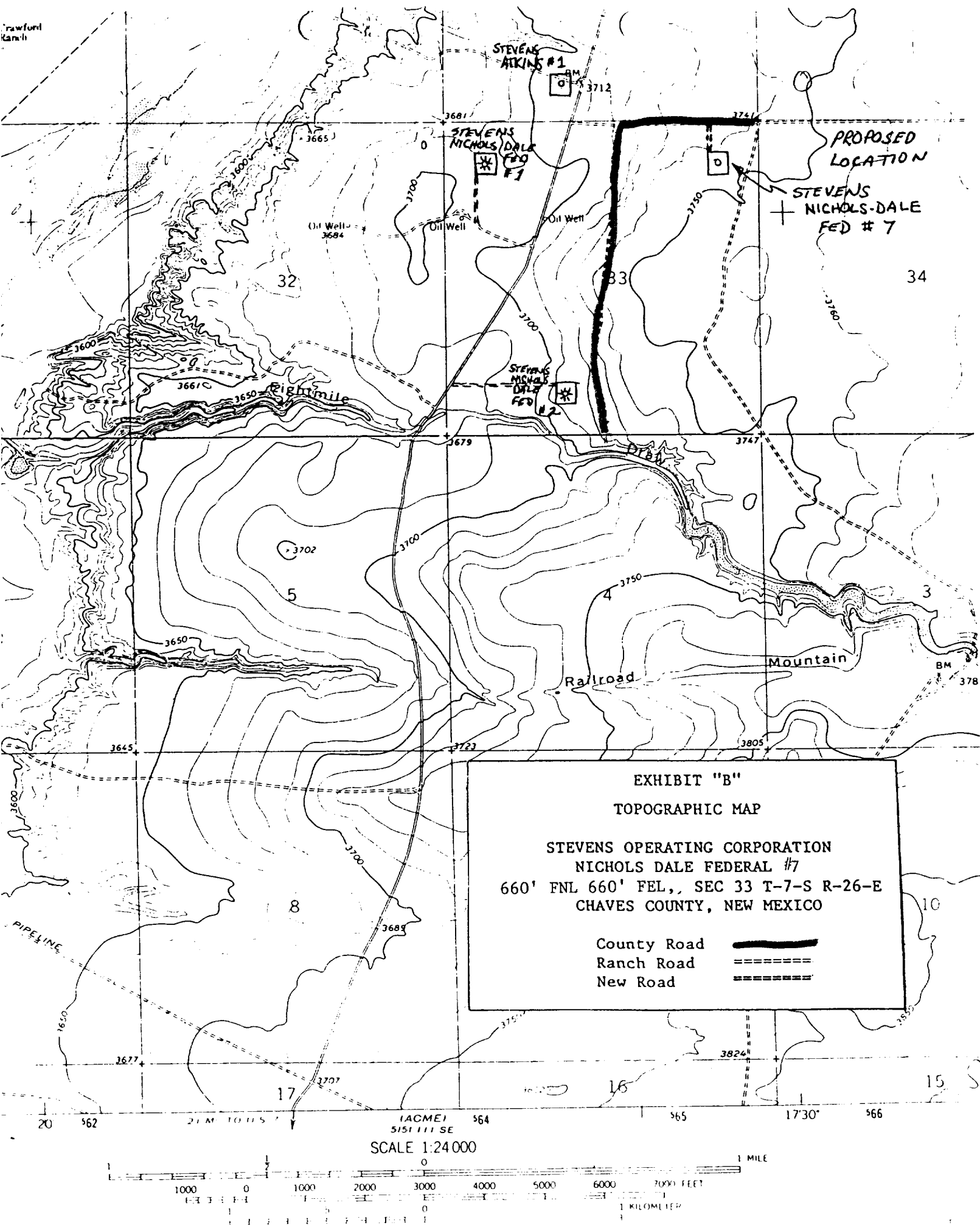
7. AUXILIARY EQUIPMENT: Drill string safety valve.

8. TESTING, LOGGING AND CORING PROGRAMS:

DST's:	As warranted.
Coring:	None planned.
Logging:	A Compensated Neutron/Formation Density Log w/Gamma Ray and a Dual Laterolog/Mirco-Spherically Focused Log.

9. ABNORMAL PRESSURES, TEMPERATURES OR GASES: None anticipated.

10. ANTICIPATED DATES: It is planned that drilling operations will commence about November 23, 1983. Duration of drilling and completion operations should be 20 to to 60 days.



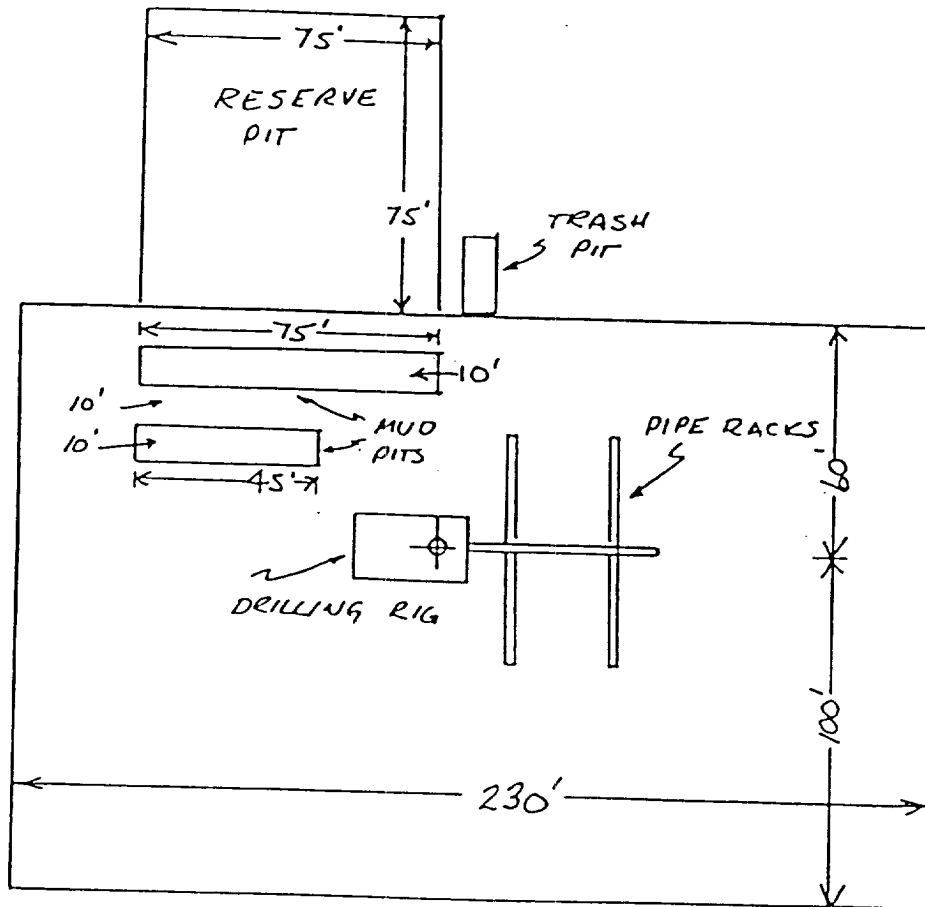


EXHIBIT "D"

SKETCH OF WELL PAD

STEVENS OPERATING CORPORATION
 WELL #7 NICHOLS-DALE FEDERAL
 660' FNL, 660' FEL, SEC. 33, T-7-S, R-26-E
 CHAVES COUNTY, NEW MEXICO