

UNITED STATES
DEPARTMENT OF THE INTERIOR

GEOLOGICAL SURVEY

APPLICATION FOR PERMIT TO DRILL DEEPEN OR PLUG BACK

1a. TYPE OF WORK

DRILL ☒DEEPEN ☐PLUG BACK ☐

b. TYPE OF WELL

OIL
WELL ☒GAS
WELL ☐OTHER ☐

NOV 14 1983

SINGLE
ZONE ☐MULTIPLE
ZONE ☐

2. NAME OF OPERATOR

Read & Stevens, Inc. ✓

OIL & GAS

3. ADDRESS OF OPERATOR

P. O. Box 1518 Roswell, New Mexico 88201

ROSWELL, NEW MEXICO

4. LOCATION OF WELL (Report location clearly and in accordance with the following requirements.)

At surface

1980' FNL & 660' FWL

At proposed prod. zone

Same

NOV 16 1983

14. DISTANCE IN MILES AND DIRECTION FROM NEAREST TOWN OR POST OFFICE

31 miles Northeast of Roswell, NM, ARTESIA, OFFICE

15. DISTANCE FROM PROPOSED*

LOCATION TO NEAREST
PROPERTY OR LEASE LINE, FT.
(Also to nearest drilg. unit line, if any)

660'

18. DISTANCE FROM PROPOSED LOCATION*

TO NEAREST WELL, DRILLING, COMPLETED,
OR APPLIED FOR, ON THIS LEASE, FT.

None

16. NO. OF ACRES IN LEASE

2,396.60

19. PROPOSED DEPTH

2,450'

17. NO. OF ACRES ASSIGNED
TO THIS WELL

40

20. ROTARY OR CABLE TOOLS

Rotary

21. ELEVATIONS (Show whether DF, RT, GR, etc.)

3905 MSL

22. APPROX. DATE WORK WILL START*

November 15, 1983

23. PROPOSED CASING AND CEMENTING PROGRAM

SIZE OF HOLE	SIZE OF CASING	WEIGHT PER FOOT	SETTING DEPTH	QUANTITY OF CEMENT
11"	8 5/8"	24#	450'	350 Sx "C" Circulated to surface
7 7/8"	4 1/2"	9.2#	2450'	300 Sx "C" To cover formation

Mud Program:

Fresh water will be used until 8 1/2" casing is set.
Well will be drilled with Brine water and native mud with a mud wt. of 10.0 ppg,
and a Viscosity of 29. The Viscosity will be raised to 34 near total depth. There
will be no water loss control.

BOP Program:

At 450', install and test to 3000#, pipe rams, blind rams (middle)
bag-type preventer and choke manifold. BOP accumulator volume will
be sufficient to operate the bag preventer and blind rams with a snap
action through the close, open close sequence.

IN ABOVE SPACE DESCRIBE PROPOSED PROGRAM: If proposal is to deepen or plug back, give data on present productive zone and proposed new productive zone. If proposal is to drill or deepen directionally, give pertinent data on subsurface locations and measured and true vertical depths. Give blowout preventer program, if any.

Agent for:

SIGNED

George Smith

TITLE Read & Stevens, Inc.

DATE Nov. 14, 1983

(This space for Federal or State office use)

PERMIT NO.

APPROVAL DATE

APPROVED BY

A.D. Lopez

TITLE

DATE

11/14/83

CONDITIONS OF APPROVAL, IF ANY:

APPROVAL SUBJECT TO
GENERAL REQUIREMENTS AND
SPECIAL STIPULATIONS
ATTACHED

All distances must be from the outer boundaries of the Section.

Operator Read & Stevens, Inc.		Lease Palma Mesa Federal		Well No. 1
Section Letter E	Section 6	Township 9 South	Range 28 East	County Chaves
Actual Well Location of Well:				
1980	feet from the North	line and 660	feet from the West	line
Ground Level Elev. 3905 MSL	Producing Formation San Andres	Pool Wildcat	Dedicated Acreage: 40 Acres	

1. Outline the acreage dedicated to the subject well by colored pencil or hatchure marks on the plat below.

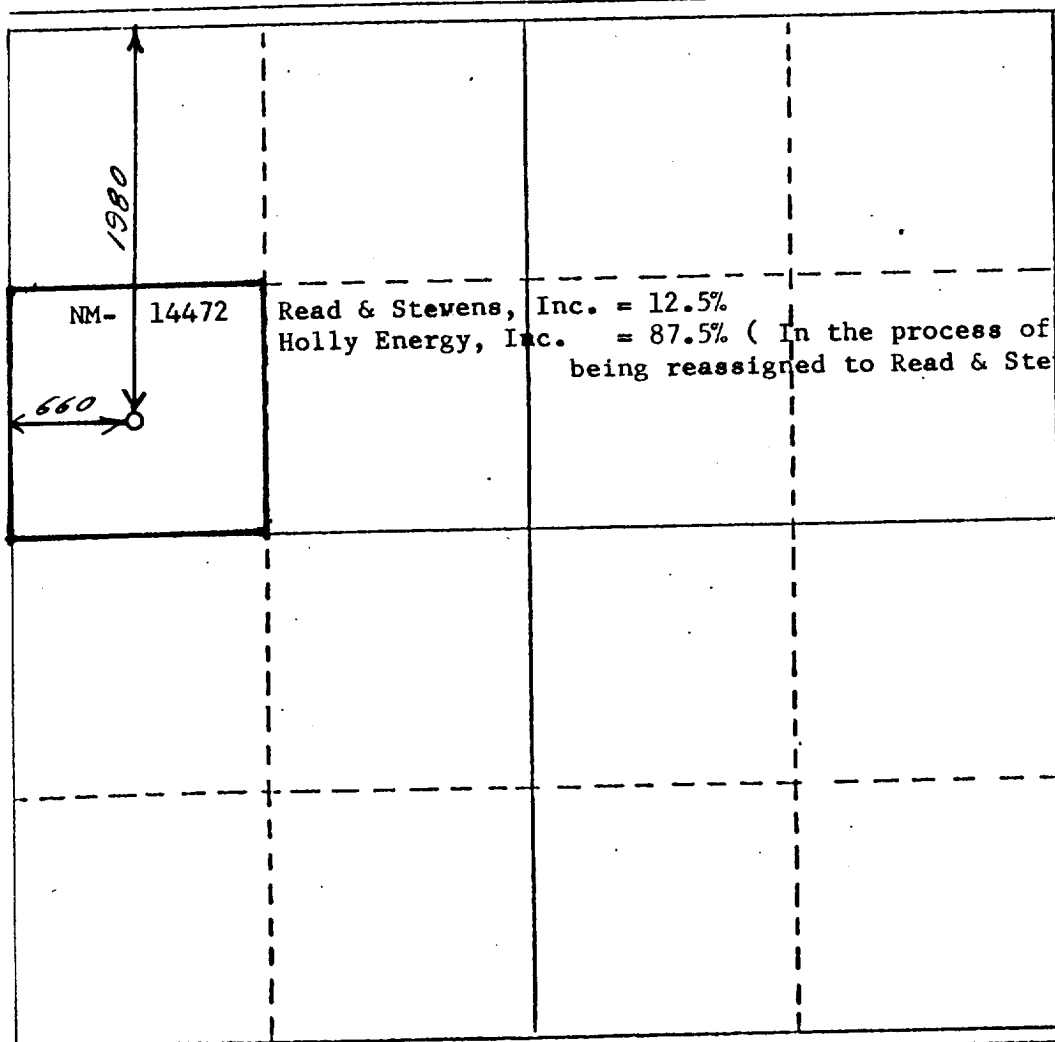
2. If more than one lease is dedicated to the well, outline each and identify the ownership thereof (both as to working interest and royalty).

3. If more than one lease of different ownership is dedicated to the well, have the interests of all owners been consolidated by communitization, unitization, force-pooling, etc?

☐ Yes ☐ No If answer is "yes," type of consolidation _____

If answer is "no," list the owners and tract descriptions which have actually been consolidated. (Use reverse side of this form if necessary.) _____

No allowable will be assigned to the well until all interests have been consolidated (by communitization, unitization, forced-pooling, or otherwise) or until a non-standard unit, eliminating such interests, has been approved by the Division.



CERTIFICATION

I hereby certify that the information contained herein is true and complete to the best of my knowledge and belief.

George R. Smith

Name

George R. Smith

Position

Agent for:

Company

Read & Stevens, Inc.

Date

November 14, 1983

I hereby certify that the well location shown on this plat was plotted from field notes of actual surveys made by me or under my supervision, and that the same is true and correct to the best of my knowledge and belief.

November 10, 1983

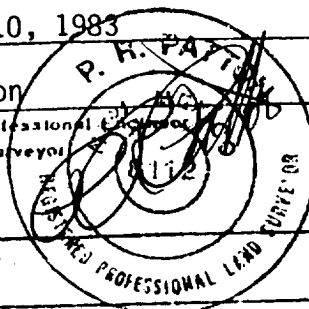
Date Surveyed

P.R. Patton

Registered Professional Engineer
and/or Land Surveyor

8112 N.M.

Certificate No.



330 660 990 1320 1650 1980 2310 2640 2970 3300 3630 3960 4290 4620 4950 5280 5610 5940 6270 6600

SHAFER BOP
B.O.P. Program

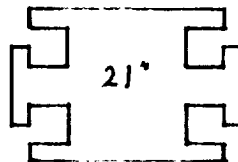
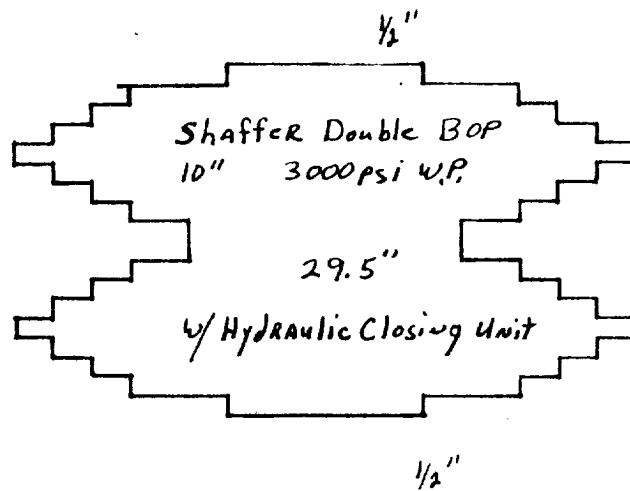
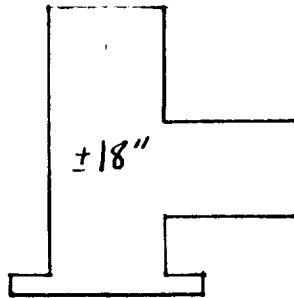


EXHIBIT "E"
READ & STEVENS, INC.
Palma Mesa Federal, Well No. 1
BOP Specifications

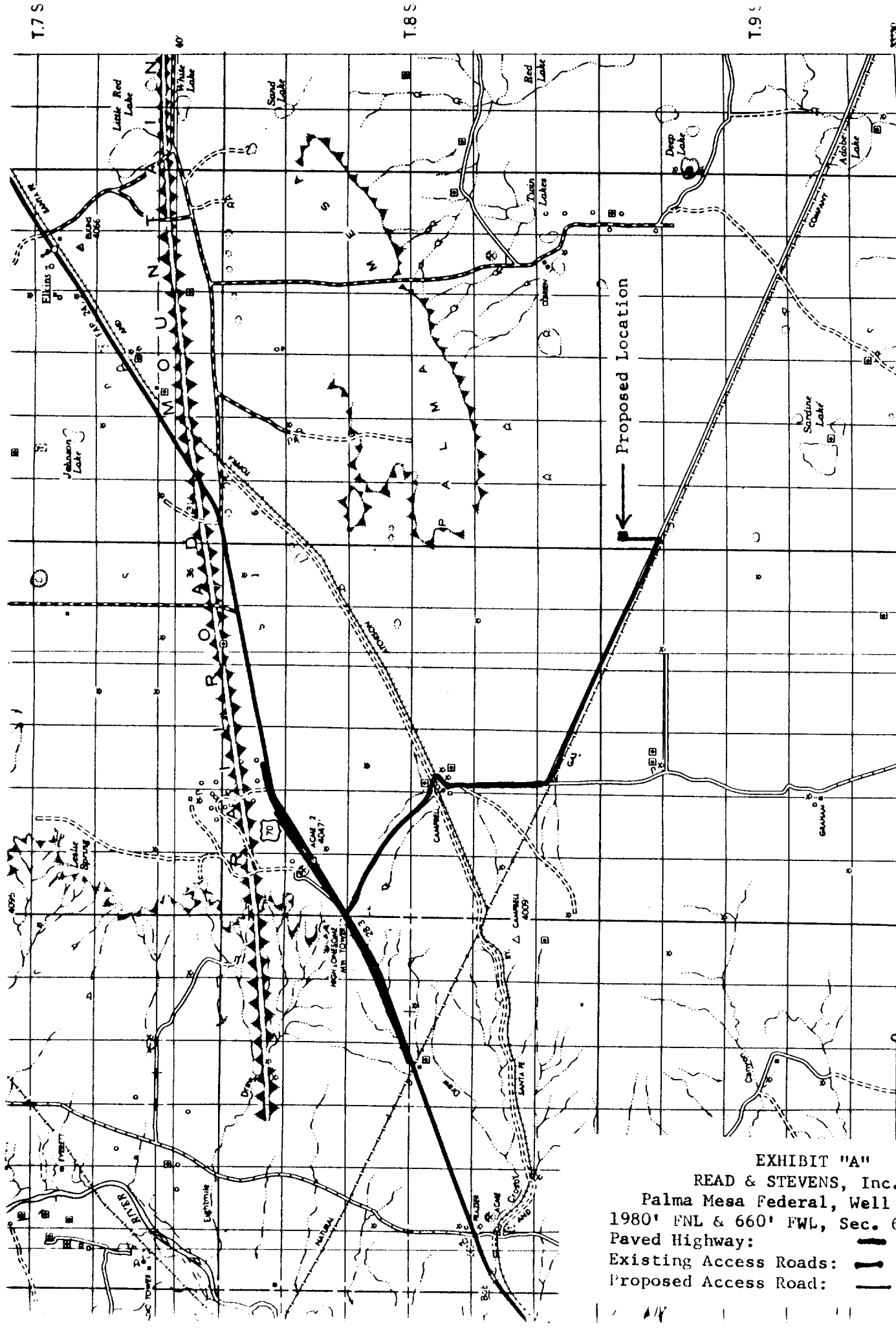
APPLICATION FOR DRILLING

READ & STEVENS, INC.
Palma Mesa Federal, Well No. 1
1980' FNL & 660' FWL, Sec. 6-T9S-R28E
Chaves County, New Mexico
Lease No.: NM-14472
(Exploratory Well)

In conjunction with Form 9-331C, Application for Permit to Drill subject well, Read & Stevens, Inc. submits the following items of pertinent information in accordance with BLM requirements:

1. The geologic surface formation is recent Permian with quaternary alluvium and other surficial deposits.
2. The estimated tops of geologic markers are as follows:

Yates	500'	Slaughter	2250'
Queen	1100'	Total depth	2450'
San Andres	1650'		
3. The estimated depth at which anticipated water, oil or gas formations are expected to be encountered:
Water: Surface water in sands from surface to 300' \pm .
Oil: San Andres/Slaughter at approximately 2200'.
Gas: None expected.
4. Proposed Casing Program: See Form 9-331C.
5. Pressure Control Equipment: See Form 9-331C, and Exhibit "E".
6. Mud Program: See Form 9-331C.
7. Auxiliary Equipment: Blowout preventer, gas detector, kelly cock, pit level monitor, flow sensors and stabbing valve.
8. Testing, Logging and Coring Program:
Drill Stem Tests: None planned.
Logging: FDC/CNL with Gamma Ray: Surface to T. D.
Micro Laterolog: Surface Csg. to T. D.
Dual Ind. Laterolog: Surface Csg. to T. D.
Coring: None.
9. No abnormal pressures or temperatures are anticipated. In the event abnormal pressures are encountered the proposed mud program will be modified to increase the mud weight.
10. Anticipated starting date: November 15, 1983.
Anticipated completion of drilling operations: Approximately 10 days.



ACME
QUADRANGLE
82

T.7 S
T.8 S
T.9 S
R.26 E
R.27 E
R.28 E
R.29 E
104°00' W
104°00' W
104°00' W
104°00' W

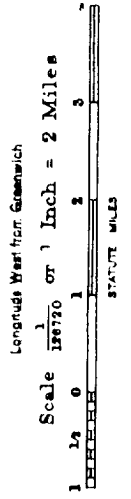


EXHIBIT "A"
READ & STEVENS, Inc.
Palma Mesa Federal, Well No. 1
1980' FNL & 660' FWL, Sec. 6-T9S-R28E
Paved Highway:
Existing Access Roads:
Proposed Access Road:

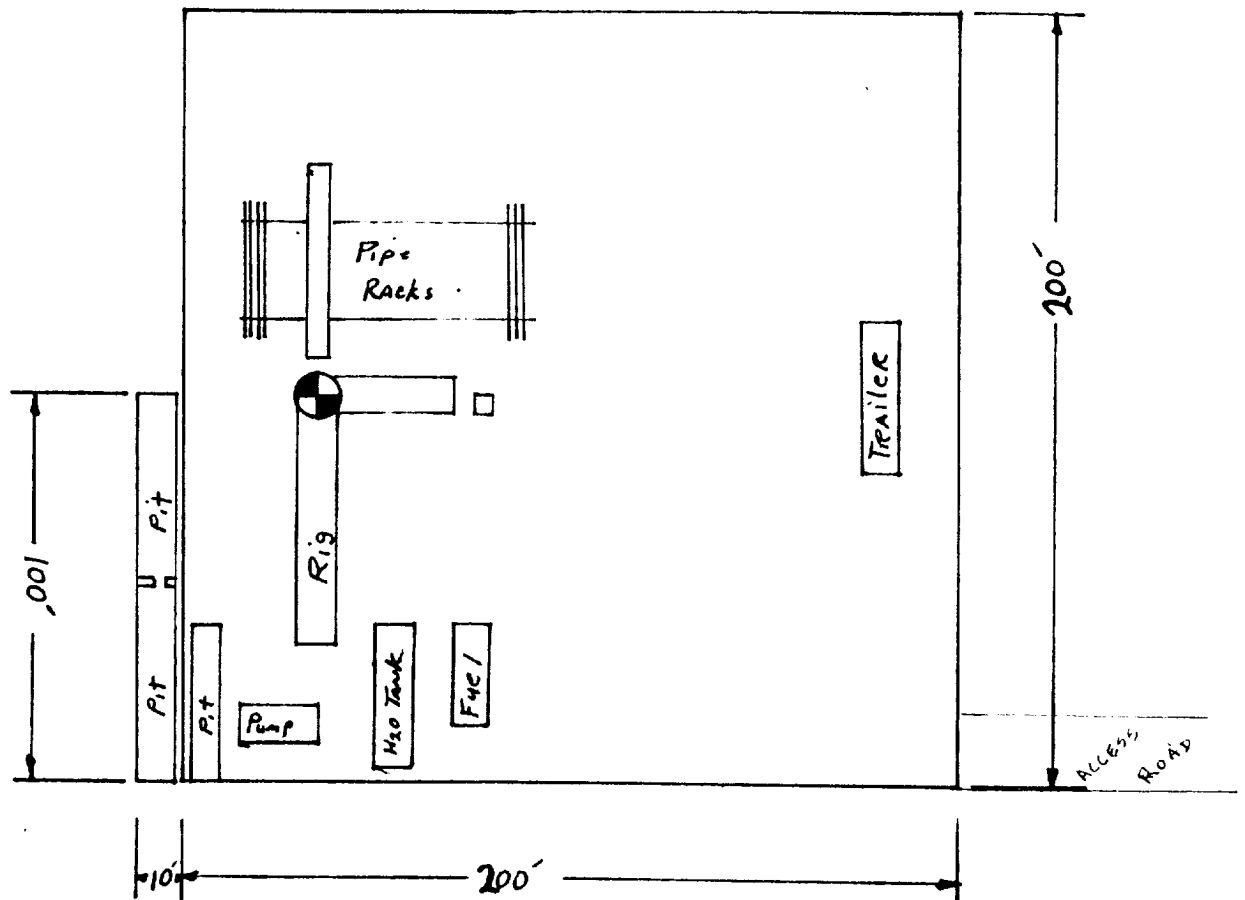


EXHIBIT "D"
READ & STEVENS, INC.
Palma Mesa Federal, Well No. 1
Rig Layout