

NM STATE COMS. COMMISSION
Dr. of DD
Artesia, NM 88210

UNITED STATES
DEPARTMENT OF THE INTERIOR
GEOLOGICAL SURVEY

RECEIVED BY

SUBMIT IN TRIPLICATE*
(Other instructions on reverse side)

ARTESIA OFFICE

Form approved.
Budget Bureau No. 42-R1425.

30-005-62075
C/37

APPLICATION FOR PERMIT TO DRILL, DEEPEN, OR PLUG BACK

1a. TYPE OF WORK

DRILL ☒

DEEPEN ☐

PLUG BACK ☐

b. TYPE OF WELL

OIL WELL ☐

GAS WELL ☒

OTHER

SINGLE ZONE ☒

MULTIPLE ZONE ☐

2. NAME OF OPERATOR

TRANSWESTERN GAS SUPPLY COMPANY

3. ADDRESS OF OPERATOR

P. O. Box 2521
Houston, Texas 77252

4. LOCATION OF WELL (Report location clearly and in accordance with any State requirements.)*
At surface

1980' FSL 660' FWL Sec. 34-5S-21E

At proposed prod. zone Same

14. DISTANCE IN MILES AND DIRECTION FROM NEAREST TOWN OR POST OFFICE*

32 miles northwest of Roswell, New Mexico

15. DISTANCE FROM PROPOSED*
LOCATION TO NEAREST
PROPERTY OR LEASE LINE, FT.
(Also to nearest drig. unit line, if any)

660'

16. NO. OF ACRES IN LEASE

1240

18. DISTANCE FROM PROPOSED LOCATION*
TO NEAREST WELL, DRILLING, COMPLETED,
OR APPLIED FOR, ON THIS LEASE, FT.

NA

19. PROPOSED DEPTH

3500' ABO

17. NO. OF ACRES ASSIGNED
TO THIS WELL

160

20. ROTARY OR CABLE TOOLS

Rotary

21. ELEVATIONS (Show whether DF, RT, GR, etc.)

4366' GL

22. APPROX. DATE WORK WILL START*

November 15, 1983

23. PROPOSED CASING AND CEMENTING PROGRAM

SIZE OF HOLE	SIZE OF CASING	WEIGHT PER FOOT	SETTING DEPTH	QUANTITY OF CEMENT
17-1/2"	13-3/8"	48.0# K-55	60'	Grouted with Redi-Mix
10-5/8"	7-5/8" LT&C	26.4# K-55	1300'±	950 sx (Circulated)
6-3/4"	4-1/2" LT&C	10.5# J-55	TD	400 sx to cover ABO

Posted ABO
AD-1 to top of Book
11-15-83

Propose to drill to about 3500' to test Abo and intermediate formations.

See attached "Supplemental Drilling Data".

See Exhibit "D" for BOP diagram.

RECEIVED

NOV 04 1983

OIL & GAS

Gas is dedicated to TRANSWESTERN PIPELINE COMPANY. ROSWELL, NEW MEXICO

IN ABOVE SPACE DESCRIBE PROPOSED PROGRAM: If proposal is to deepen or plug back, give data on present productive zone and proposed new productive zone. If proposal is to drill or deepen directionally, give pertinent data on subsurface locations and measured and true vertical depths. Give blowout preventer program, if any.

24.

SIGNED

JERRY W. LONG

TITLE Agent

DATE November 3, 1983

(This space for Federal or State office use)

PERMIT NO.

APPROVAL DATE

ORIG. SIGNED JAMES A. GILLHAM

TITLE

ACTING District Manager

APPROVED BY
CONDITIONS OF APPROVAL, IF ANY:

11-16-83
APPROVAL SUBJECT TO
GENERAL REQUIREMENTS AND
SPECIAL STIPULATIONS
ATTACHED

OIL CONSERVATION DIVISION

P. O. BOX 2088

SANTA FE, NEW MEXICO 87501

Form C-102
Revised 10-1-77STATE OF NEW MEXICO
ENERGY AND MINERALS DEPARTMENT

All distances must be from the outer boundaries of the Section.

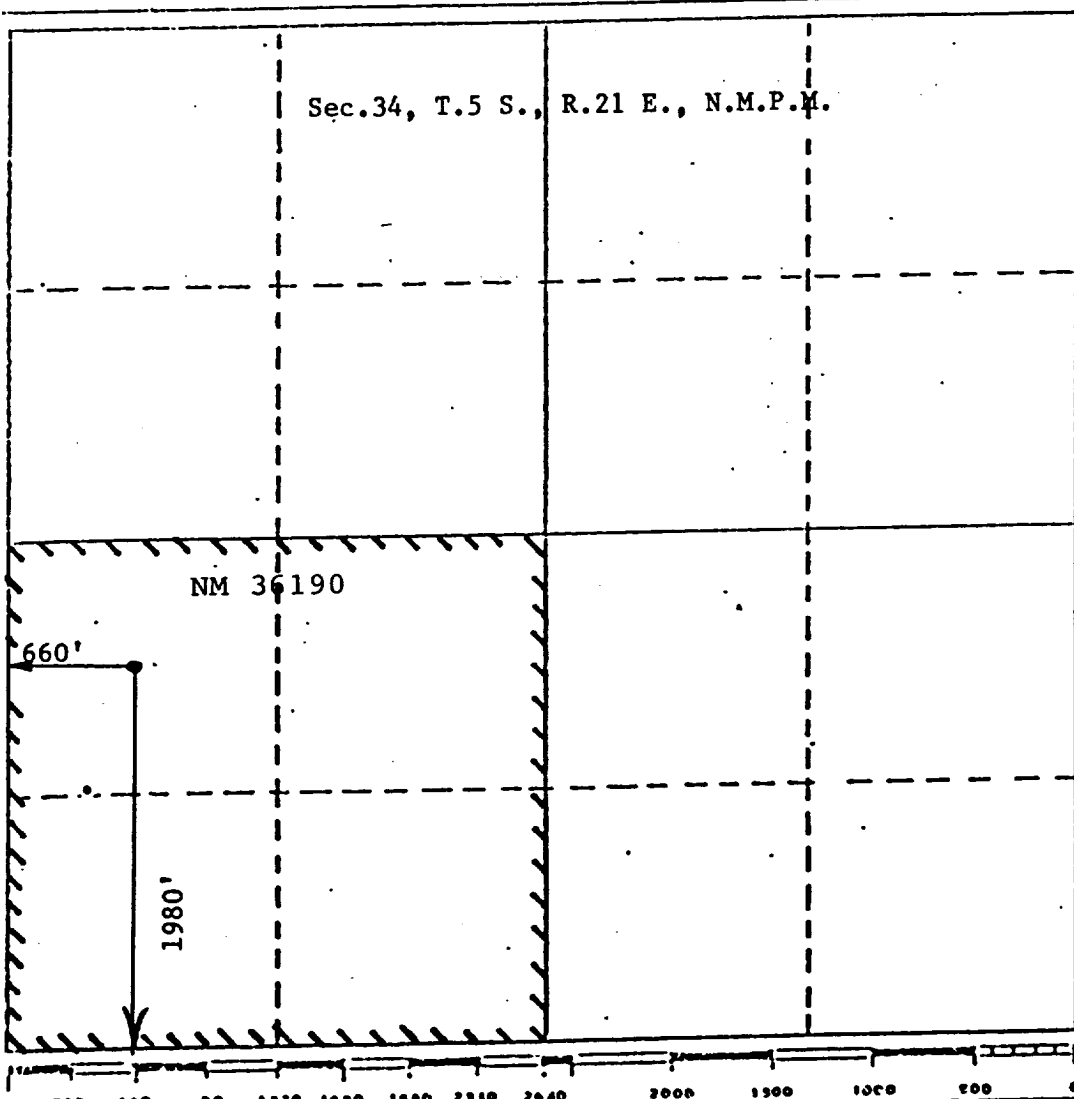
Operator Transwestern Gas Supply			Lease Eppers Federal		Well No. #1
Unit Letter L	Section 34	Township 5 South	Range 21 East	County Chaves	
Actual Postage Location of Well: 1980 feet from the South line and 660 feet from the West line					
Ground Level Elev. 4366	Producing Formation Abo		Pool Wildcat		Dedicated Acreage: 160 Acres

1. Outline the acreage dedicated to the subject well by colored pencil or hatchure marks on the plat below.
2. If more than one lease is dedicated to the well, outline each and identify the ownership thereof (both as to working interest and royalty). SINGLE LEASE
3. If more than one lease of different ownership is dedicated to the well, have the interests of all owners been consolidated by communitization, unitization, force-pooling, etc?

☐ Yes ☐ No If answer is "yes," type of consolidation _____

If answer is "no," list the owners and tract descriptions which have actually been consolidated. (Use reverse side of this form if necessary.) _____

No allowable will be assigned to the well until all interests have been consolidated (by communitization, unitization, forced-pooling, or otherwise) or until a non-standard unit, eliminating such interests, has been approved by the Division.



CERTIFICATION

I hereby certify that the information contained herein is true and complete to the best of my knowledge and belief.

Jerry W. Long
Name
JERRY W. LONG

Position

Agent

Company

TRANSWESTERN GAS SUPPLY CO.

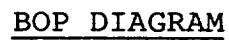
Date

November 3, 1983

I hereby certify that the well location shown on this plat was plotted from field notes of actual surveys made by me or under my supervision, and that the same is true and correct to the best of my knowledge and belief.

JOHN D. JAQUESS
Date Surveyed
October 25, 1983
Registered Professional Engineer
and/or Land Surveyor
JOHN D. JAQUESS, PE & LS
Certificate No. **6290**

No.1 Eppers Federal
NW¼SW¼ Sec.34-5S-21E
Chaves County, N.M.



3000# Working Pressure
Rams Operated Daily

SUPPLEMENTAL DRILLING DATA

TRANSWESTERN GAS SUPPLY COMPANY
No.1 Eppers Federal
NW¼SW¼ Sec.34-5S-21E
Chaves County, N.M.

NM 36190

The following items supplement Form 9-331C in accordance with instructions contained in NTL-6.

1. SURFACE FORMATION: Permian - San Andres

2. ESTIMATED TOPS OF GEOLOGIC MARKERS:

Glorieta	450'
Tubb	2000'
Drinkard	2400'
Abo	2650'

3. ESTIMATED DEPTHS TO WATER, OIL OR GAS FORMATIONS:

Fresh Water	-	Surface to 450'
Oil	-	None
Gas	-	2700' to 3000'

4. PROPOSED CASING PROGRAM:

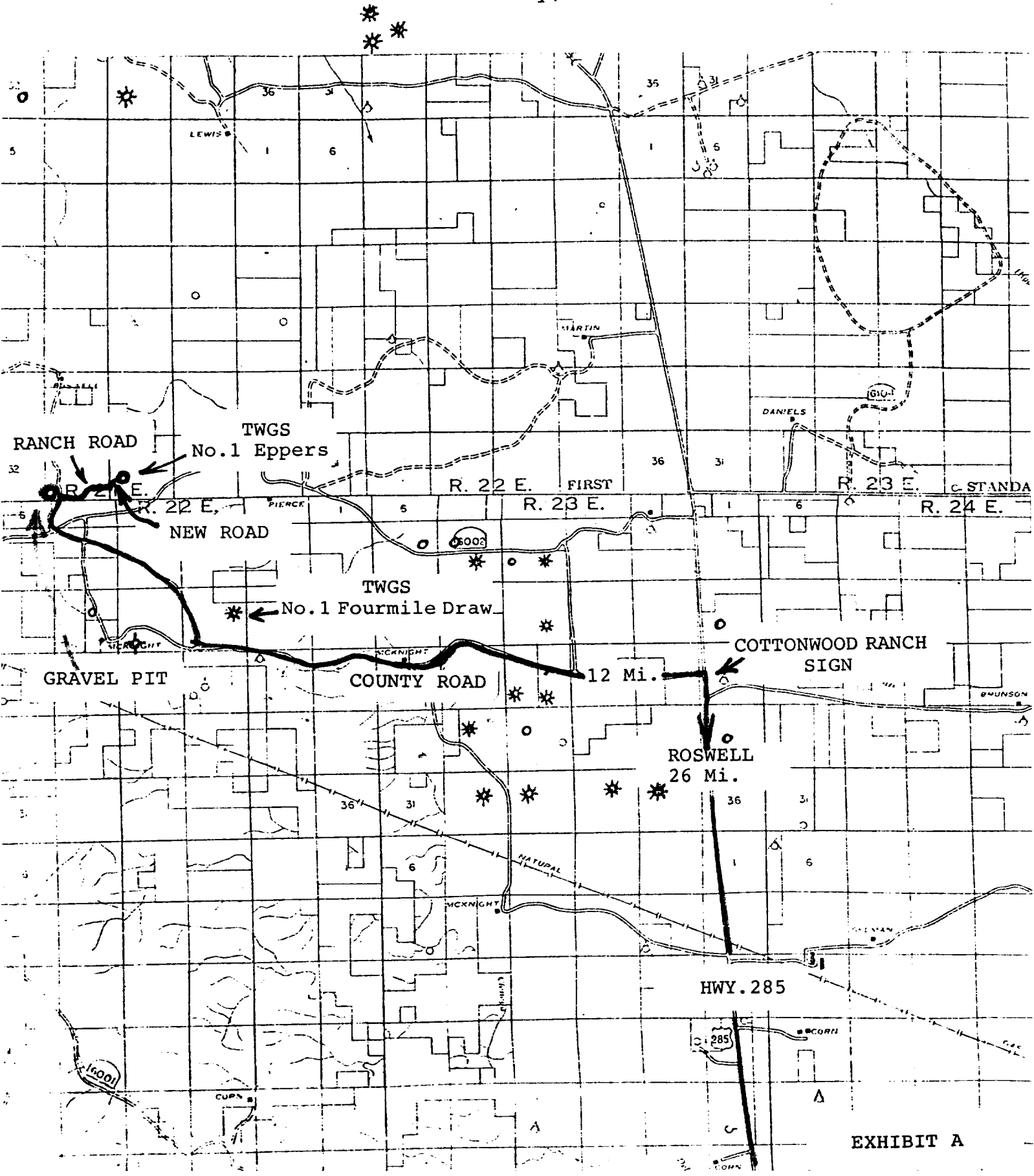
13-3/8" Casing	-	Set 60', 48.0#, K-55, grouted to surface.
7-5/8" Casing	-	26.4#, J-55, LT&C, set to 1300'± with cement circulated to surface.
4-1/2" Casing	-	10.5#, K-55, ST&C, set to TD and cemented with approximately 400 sx.

5. PRESSURE CONTROL EQUIPMENT: The blowout preventer stack will consist of a double-ram blowout preventer rated at 3000#WP. Exhibit "D" is a sketch of the BOP and choke manifold. The stack will include connections for kill and fill lines.

6. CIRCULATING MEDIUM: Mud will be used as the circulating medium. Mud additives will be used as dictated by hole conditions.

TRANSWESTERN GAS SUPPLY COMPANY

No.1 Eppers Federal
NW¼SW¼ Sec.34-5S-21E
Chaves County, N.M.



TRANSWESTERN GAS SUPPLY COMPANY
No.1 Eppers Federal
NW¼SW¼ Sec.34-5S-21E
Chaves County, N.M.

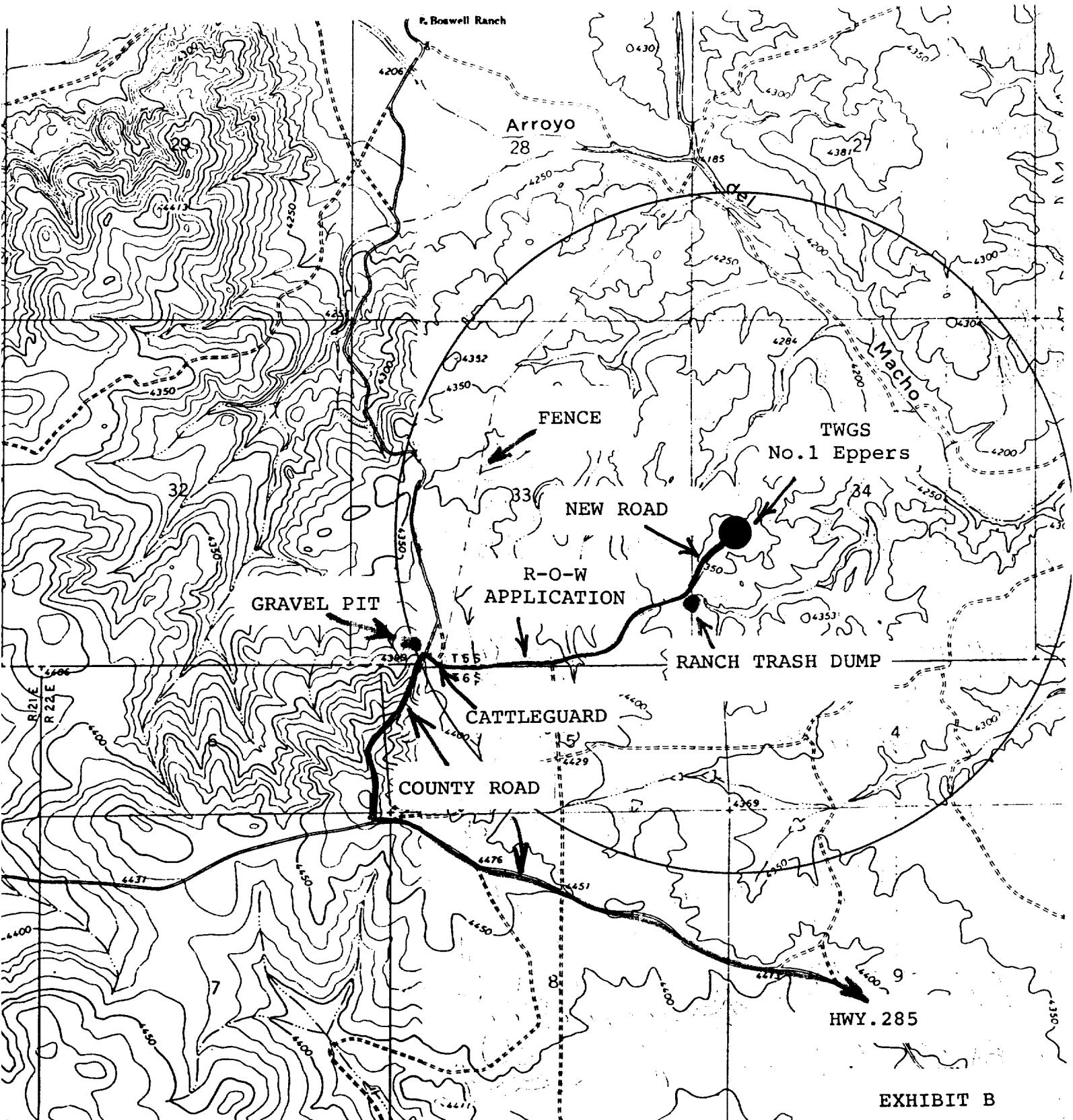
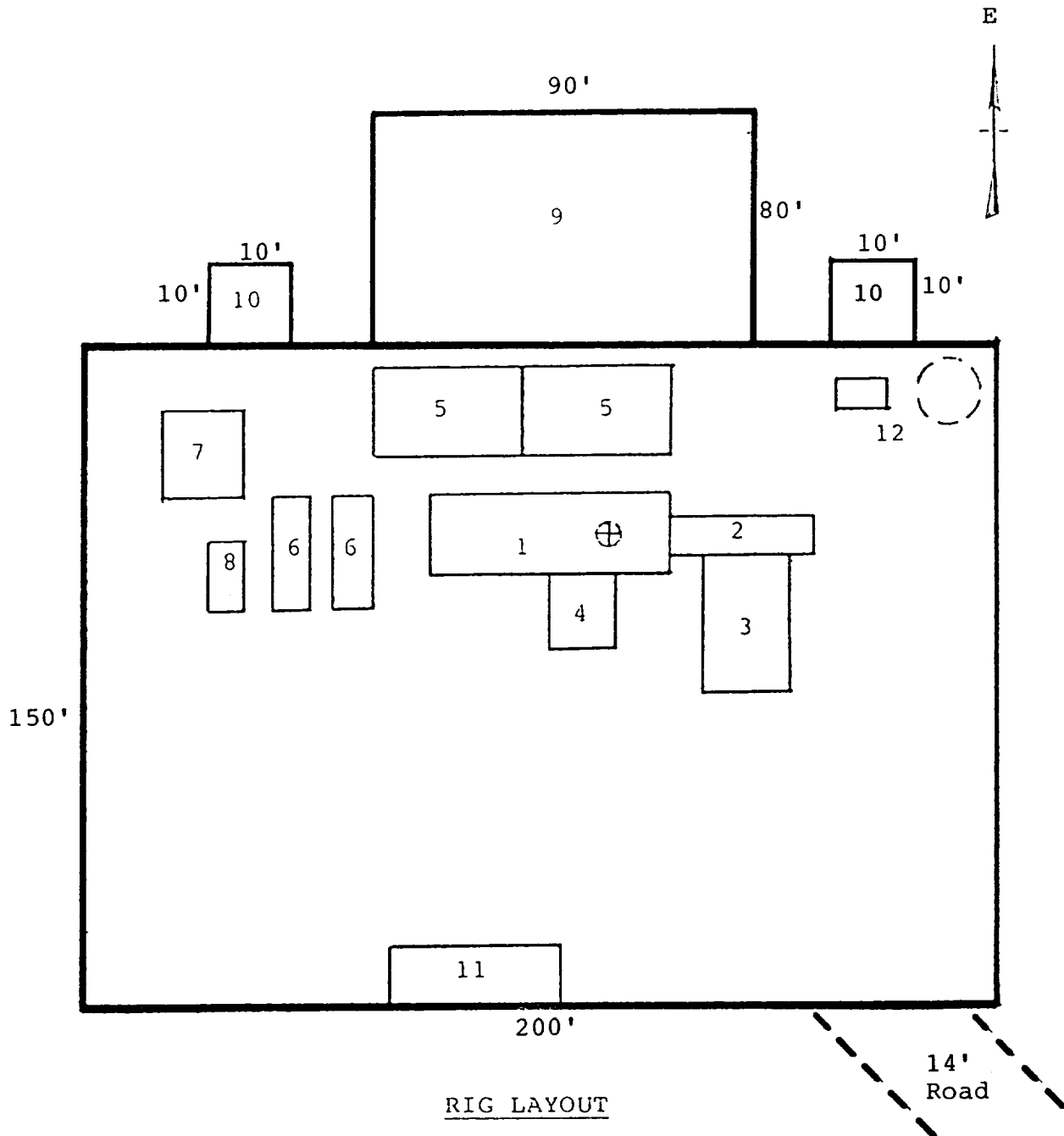


EXHIBIT B

TRANSWESTERN GAS SUPPLY COMPANY
 No.1 Eppers Federal
 NW¼SW¼ Sec.34-5S-21E
 Chaves County, N.M.



RIG LAYOUT

- | | |
|-----------------|---------------------------|
| 1. Substructure | 7. Water Tank |
| 2. Catwalk | 8. Light Plant |
| 3. Pipe Rack | 9. Reserve Pit |
| 4. Doghouse | 10. Trash Pit |
| 5. Mud Pits | 11. Trailer House |
| 6. Mud Pumps | 12. Production Facilities |