

NM OIL CONS. COMMISSION

Drawer DD

Artesia, NM 88210

UNITED STATES
DEPARTMENT OF THE INTERIOR

GEOLOGICAL SURVEY

APPLICATION FOR PERMIT TO DRILL, DEEPEN, OR PLUG BACK

1a. TYPE OF WORK

DRILL ☒DEEPEN ☐PLUG BACK ☐

b. TYPE OF WELL

OIL
WELL ☐GAS
WELL ☒OTHER ☐SINGLE
ZONE ☐MULTIPLE
ZONE ☐

2. NAME OF OPERATOR

Yates Petroleum Corporation

3. ADDRESS OF OPERATOR

207 S. 4th, Artesia, New Mexico 88210

4. LOCATION OF WELL (Report location clearly and in accordance with any State requirements)

At surface

1980' FSL and 660' FEL

At proposed prod. zone

same

14. DISTANCE IN MILES AND DIRECTION FROM NEAREST TOWN OR POST OFFICE

Approximately 19 miles NNE of Roswell, NM.

15. DISTANCE FROM PROPOSED*

LOCATION TO NEAREST

PROPERTY OR LEASE LINE, FT.

(Also to nearest drlg. unit line, if any) 660'

16. NO. OF ACRES IN LEASE

2520

18. DISTANCE FROM PROPOSED LOCATION*

TO NEAREST WELL DRILLING COMPLETED,

OR APPLIED FOR, ON THIS LEASE, FT.

19. PROPOSED DEPTH

4125'

21. ELEVATIONS (Show whether DF, RT, GR, etc.)

3603.5' GL

23.

PROPOSED CASING AND CEMENTING PROGRAM

SIZE OF HOLE	SIZE OF CASING	WEIGHT PER FOOT	SETTING DEPTH	QUANTITY OF CEMENT
14 3/4"	10 3/4"	40.5# J-55	1000' 575'	900 sx circulated
12 1/4"	8 5/8"	24# J-55	1500'	(Optional)
7 7/8"	4 1/2"	9.5# J-55	TD	350 sx

We propose to drill and test the Abo and intermediate formations. Approximately 1000' 575' surface casing will be set and cement circulated to shut off gravel and caving. If needed (lost circulation) 8 5/8" intermediate casing will be run to 1500' and cemented with enough cement calculated to tie back into the surface casing. If commercial, production casing will be run and cemented with adequate cover, perforated and stimulated as needed for production.

MUD PROGRAM: FW gel/LCM to 1000', Brine to 3200', Brine/KCL water to TD.

BOP PROGRAM: BOP's will be installed at the offset and tested daily.

GAS NOT DEDICATED.

IN ABOVE SPACE DESCRIBE PROPOSED PROGRAM: If proposal is to deepen or plug back, give data on present productive zone and proposed new productive zone. If proposal is to drill or deepen directionally, give pertinent data on subsurface locations and measured and true vertical depths. Give blowout preventer program, if any.

24.

SIGNED

Cy Cowan

TITLE Regulatory Agent

DATE 11/18/83

(This space for Federal or State office use)

PERMIT NO.

APPROVAL DATE

District Manager

APPROVED BY

'Orig. Sgd' Earl R. Cowan

APPROVAL SUBJECT TO

DATE

DEC 02 1983

CONDITIONS OF APPROVAL, IF ANY:

GENERAL REQUIREMENTS AND
SPECIAL STIPULATIONS
ATTACHED

RECEIVED BY
SUBMIT IN LOCATE
(Other instructions on
reverse side)
DEC 05 1983
O. C. D.

Form approved.
Budget Bureau No. 42-R1425.

5. LEASE DESIGNATION AND SERIAL NO.

NM-2351

6. IF INDIAN, ALLOTTEE OR TRIBE NAME

7. UNIT AGREEMENT NAME

8. FARM OR LEASE NAME

Federal "HY"

NO.

10. FIELD AND POOL, OR WILDCAT

Pecos Slope Abo

11. SEC., T., R., M., OR BLK.
AND SURVEY OR AREA

Sec. 28-T7S-R25E

12. COUNTY OR PARISH

Chaves

13. STATE

NM

17. NO. OF ACRES ASSIGNED
TO THIS WELL

160

20. ROTARY OR CABLE TOOLS

Rotary

22. APPROX. DATE WORK WILL START*

ASAP

Posted to 42
FD-104 Book
12-8-83

NEW MEXICO OIL CONSERVATION COMMISSION
WELL LOCATION AND ACREAGE DEDICATION PLAT

Form C-102
Supersedes C-128
Effective 1-1-65

All distances must be from the outer boundaries of the Section

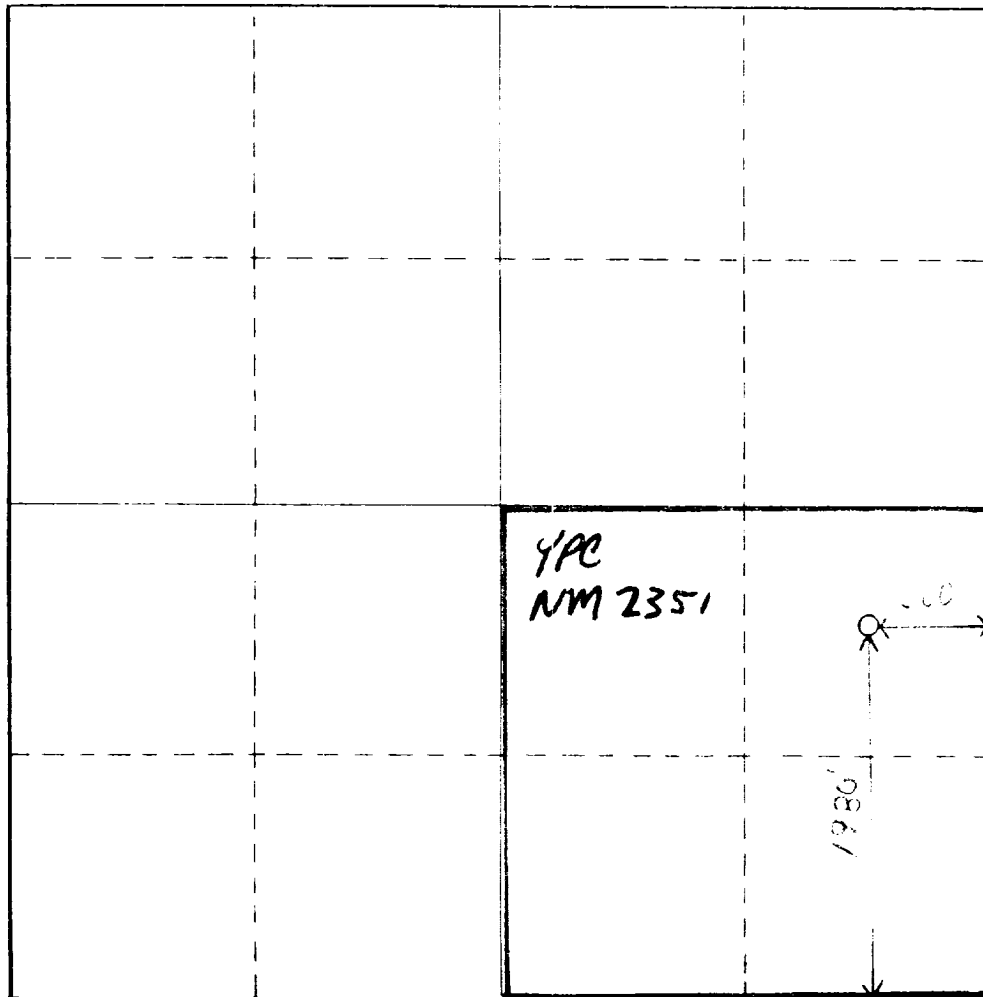
Owner YATES PETROLEUM CORPORATION			Lease Federal "HY"		Well No. 9
Tract Letter I	Section 28	Township 7 South	Range 25 East	County Chaves	
Actual Section Location of Well: 1980 feet from the South line and 660 feet from the East line.					
Distance to Well 3603.5' GL		Producing Formation ABO		Estimated Acreage 160 Acres	

1. Outline the acreage dedicated to the subject well by colored pencil or hatchure marks on the plat below.
2. If more than one lease is dedicated to the well, outline each and identify the ownership thereof (both as to working interest and royalty).
3. If more than one lease of different ownership is dedicated to the well, have the interests of all owners been consolidated by communitization, unitization, force-pooling, etc?

☐ Yes ☒ No If answer is "yes," type of consolidation _____

If answer is "no," list the owners and tract descriptions which have actually been consolidated. (Use reverse side of this form if necessary.) _____

No allowable will be assigned to the well until all interests have been consolidated (by communitization, unitization, forced-pooling, or otherwise) or until a non-standard unit, eliminating such interests, has been approved by the Commission.



CERTIFICATION

I hereby certify that the information contained herein is true and complete to the best of my knowledge and belief.

Cy Cowan

Name
Cy Cowan
Position
Regulatory Agent
Company
Yates Petroleum Corp.
Date
11/18/83

I hereby certify that the well location shown on this plat was plotted from field notes of actual surveys made by me or under my supervision, and that the same is true and correct to the best of my knowledge and belief.

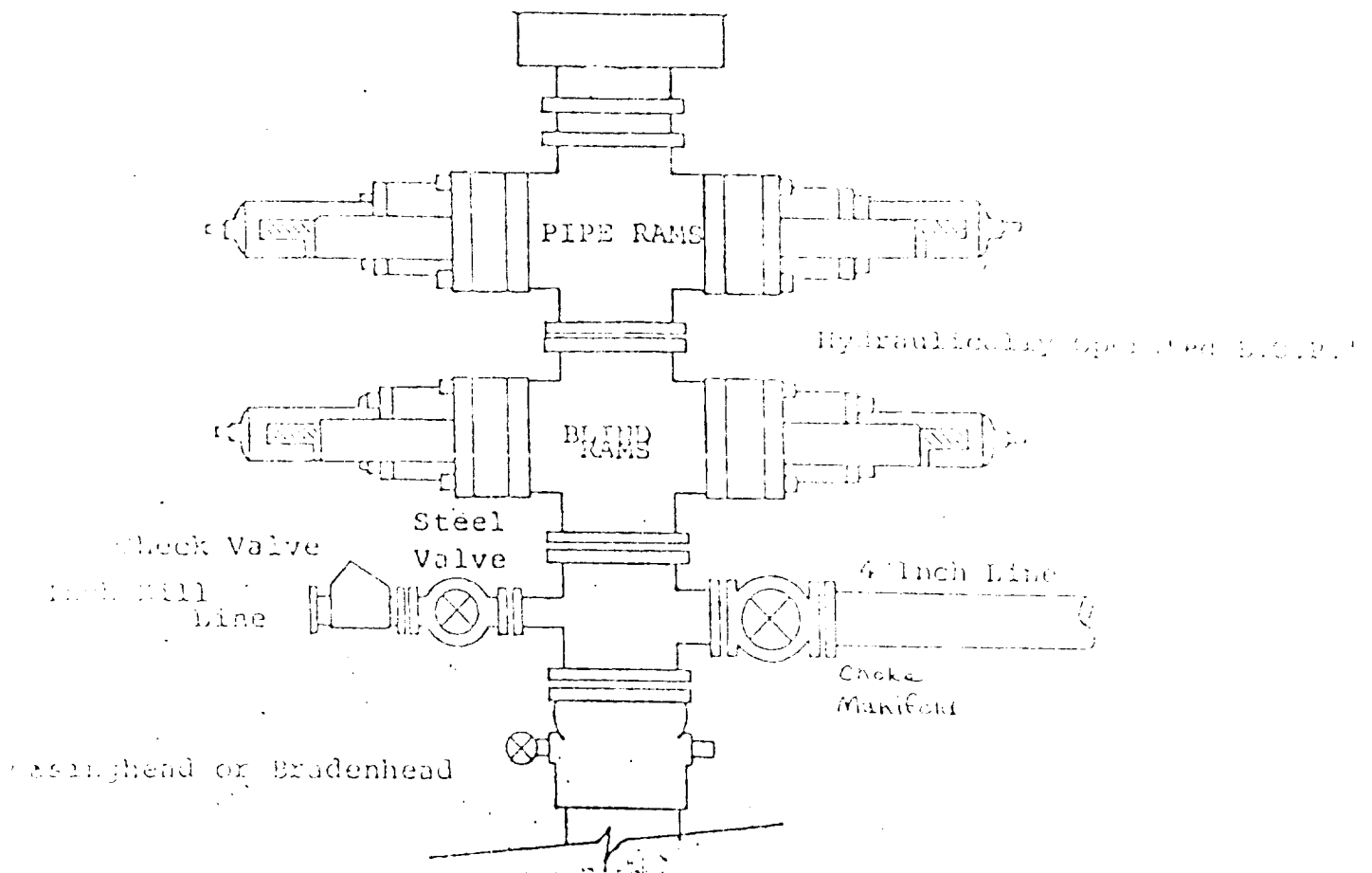
Date Surveyed
November 17, 1983
Registered Professional Engineer and/or Land Surveyor
[Signature]

Certificate No.
3640

EXHIBIT B

BOP DIAGRAM

RATED 3000[#]



YATES PETROLEUM CORPORATION
Federal "HY" #9
1980' FSL and 660' FSL
Section 28-T7S-R25E
Chaves County, New Mexico

In conjunction with Form 9-331C, Application for Permit to Drill subject well, Yates Petroleum Corporation submits the following ten items of pertinent information in accordance with BLM requirements.

1. The geologic surface formation is quaternary alluvium.
2. The estimated tops of geologic markers are as follows:

San Andres	402'
Glorieta	1370'
Fullerton	2810'
Abo	3464'
TD	4125'

3. The estimated depths at which anticipated water, oil or gas formations are expected to be encountered:

Water: 275-300'

Oil or Gas: Abo 3580'

4. Proposed Casing Program: See Form 9-331C.
5. Pressure Control Equipment: See Form 9-331C.
6. Mud Program: See Form 9-331C.
7. Auxiliary Equipment: Kelly Cock; bit level indicators and flow sensor equipment; sub with full-opening valve on floor, drill pipe connection.
8. Testing, Logging and Coring Program:
Samples: Surface casing to TD.
DST's: As warranted.
Coring: None.
Logging: CNL-FDC TD to csg w/GR-CNL to surface, DLL from TD to csg.
9. No abnormal pressures or temperatures are anticipated.
10. Anticipated starting date: As soon as possible after approval.

YATES PETROLEUM CORP.
Exhibit C

