

DEPARTMENT OF THE INTERIOR
GEOLOGICAL SURVEY

c/87

SUNDRY NOTICES AND REPORTS ON WELLS

(Do not use this form for proposals to drill or to deepen or plug back to a different reservoir. Use Form 9-331-C for such proposals.)

1. oil ☐ well gas ☒ well other ☐

2. NAME OF OPERATOR
Yates Petroleum Corporation

3. ADDRESS OF OPERATOR
207 S. 4th, Artesia, New Mexico

4. LOCATION OF WELL (REPORT LOCATION CLEARLY. See space 17 below.)
AT SURFACE: 1980' FSL and 860' FEL
AT TOP PROD. INTERVAL:
AT TOTAL DEPTH: same

16. CHECK APPROPRIATE BOX TO INDICATE NATURE OF NOTICE, REPORT, OR OTHER DATA

REQUEST FOR APPROVAL TO:

SUBSEQUENT REPORT OF:

TEST WATER SHUT-OFF ☐

FRACTURE TREAT ☐

SHOOT OR ACIDIZE ☐

REPAIR WELL ☐

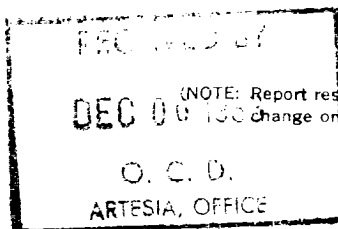
PULL OR ALTER CASING ☐

MULTIPLE COMPLETE ☐

CHANGE ZONES ☐

ABANDON* ☐

(other) location change ☐



(NOTE: Report results of multiple completion or zone change on Form 9-330.)

17. DESCRIBE PROPOSED OR COMPLETED OPERATIONS (Clearly state all pertinent details, and give pertinent dates, including estimated date of starting any proposed work. If well is directionally drilled, give subsurface locations and measured and true vertical depths for all markers and zones pertinent to this work.)*

Change location from: 1980' FSL and 660' FEL

to: 1980' FSL and 860' FEL

Note: Plat and map.

Posted AD-1
12-2-83
chg. loc.

NOV 23 1983

OIL & GAS

ROSWELL, NEW MEXICO

Subsurface Safety Valve: Manu. and Type

Set @ Ft.

18. I hereby certify that the foregoing is true and correct

SIGNED

David R. Glass
APPROVED

TITLE

Regulatory
Secretary

DATE

11/22/83

(ORIG. SGD.) DAVID R. GLASS

(This space for Federal or State office use)

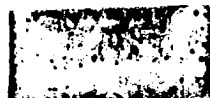
APPROVED BY

CONDITIONS OF APPROVAL

DEC 2 1983

TITLE

DATE



*See Instructions on Reverse Side

NEW MEXICO OIL CONSERVATION COMMISSION
WELL LOCATION AND ACREAGE DEDICATION PLAT

RECEIVED BY
Form C-122
Supersedes C-128
Effective 1-1-65

DEC 06 1983

C. C. 90.

ARTESIA OFFICE

All distances must be from the outer boundaries of the Section.

Operator Yates Petroleum Corporation		Lease Federal "HY"		
Section I	Section 28	Township 7 South	Range 25 East	County Chaves

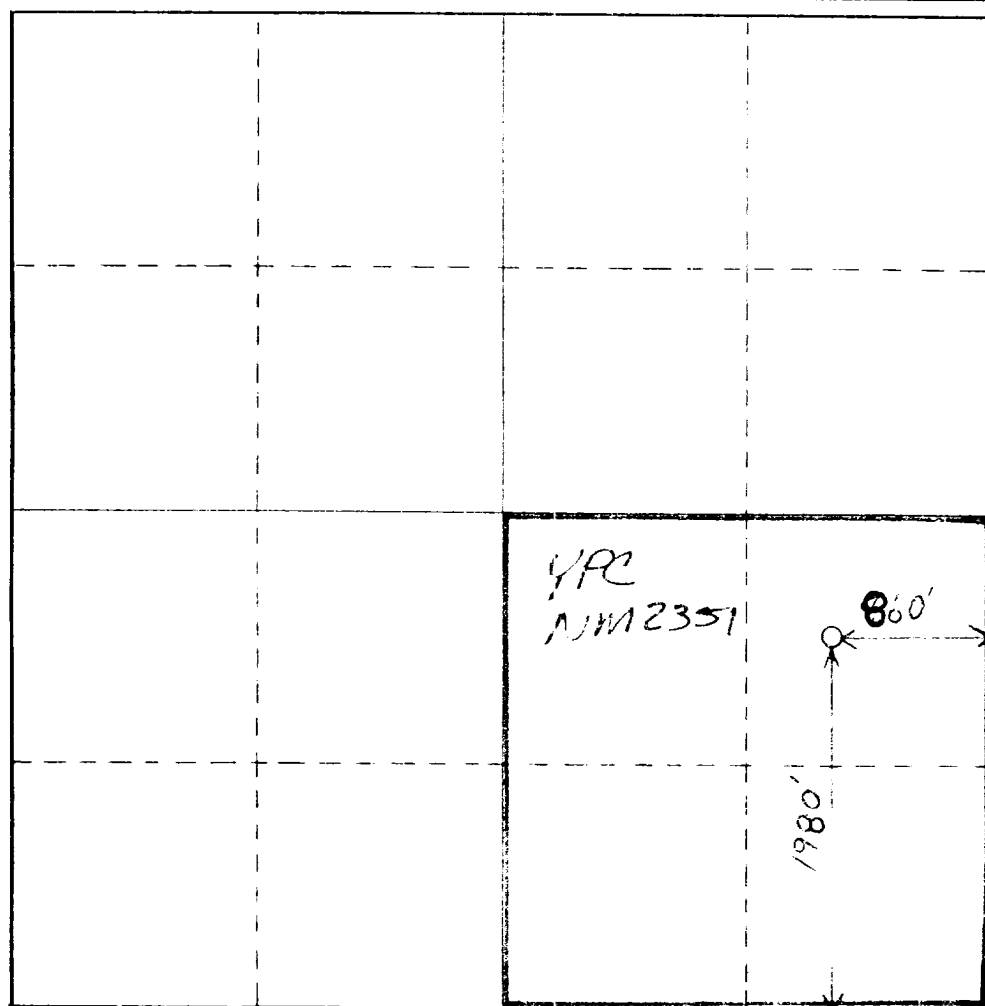
Actual Section Location of Well:				
1980	feet from the	South	line and	860
feet from the		East	line	
Ground Level Elev. 3603.1' GL	Producing Formation ABO	Pool Pecan Slope ABO	Dedicated Acreage 160	Acres

1. Outline the acreage dedicated to the subject well by colored pencil or hachure marks on the plat below.
2. If more than one lease is dedicated to the well, outline each and identify the ownership thereof (both as to working interest and royalty).
3. If more than one lease of different ownership is dedicated to the well, have the interests of all owners been consolidated by communitization, unitization, force-pooling, etc?

☐ Yes ☒ No If answer is "yes," type of consolidation _____

If answer is "no," list the owners and tract descriptions which have actually been consolidated. (Use reverse side of this form if necessary.) _____

No allowable will be assigned to the well until all interests have been consolidated (by communitization, unitization, forced-pooling, or otherwise) or until a non-standard unit, eliminating such interests, has been approved by the Commission.



CERTIFICATION

I hereby certify that the information contained herein is true and complete to the best of my knowledge and belief.

Cy Cowan

Name
Cy Cowan

Position
Regulatory Agent

Company
Yates Petroleum Corp.

Date
11/22/83

I hereby certify that the well location shown on this plat was plotted from field notes of actual surveys made by me or under my supervision, and that the same is true and correct to the best of my knowledge and belief.

November 21, 1983

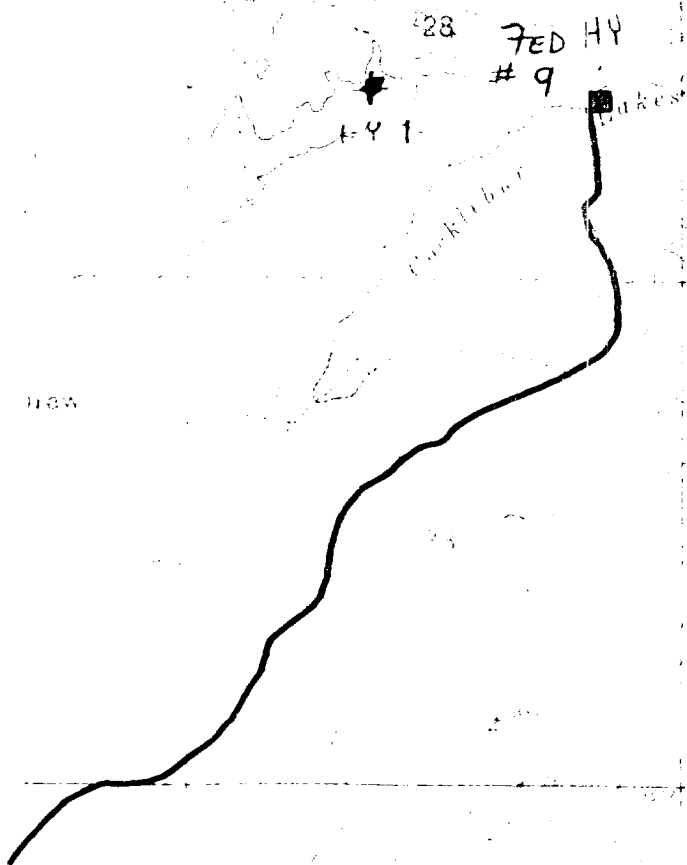
Date Surveyed

Registered Professional Engineer
and/or Land Surveyor

Certificate No.

3640

0 330 660 990 1320 1650 1980 2310 2640 2970 3300 3630 3960 4290 4620 4950 5280 5610 5940 6270 6600



Yates Petroleum Corp
FEDERAL 'HY' #9
860' FEL-1980FSL
Sec 28-T7s-R25E
Chaves County
NM
Exhibit A