

## APPLICATION FOR PERMIT TO DRILL, DEEPEN OR PLUG BACK

## 1a. TYPE OF WORK

DRILL ☒DEEPEN ☐OIL & PLUG BACK ☐

## b. TYPE OF WELL

OIL  
WELL ☐GAS  
WELL ☒OTHER ☐SINGLE ☐MULTIPLE ☐

## 2. NAME OF OPERATOR

Yates Petroleum Corporation

## 3. ADDRESS OF OPERATOR

207 S. 4th, Artesia, New Mexico

## 4. LOCATION OF WELL (Report location clearly and in accordance with any State requirements.)\*

At surface

1980' FSL and 660' FWL

At proposed prod. zone

same

## 14. DISTANCE IN MILES AND DIRECTION FROM NEAREST TOWN OR POST OFFICE\*

31 miles NNE of Roswell, New Mexico

## 15. DISTANCE FROM PROPOSED\*

LOCATION TO NEAREST  
PROPERTY OR LEASE LINE, FT.  
(Also to nearest drlg. unit line, if any)

660'

## 18. DISTANCE FROM PROPOSED LOCATION\*

TO NEAREST WELL, DRILLING COMPLETED,  
OR APPLIED FOR, ON THIS LEASE, FT.

## 16. NO. OF ACRES IN LEASE

2560

## 19. PROPOSED DEPTH

appr. 4200'

17. NO. OF ACRES ASSIGNED  
TO THIS WELL

160

## 20. ROTARY OR CABLE TOOLS

Rotary

## 21. ELEVATIONS (Show whether DF, RT, GR, etc.)

4047.2' GL

## 22. APPROX. DATE WORK WILL START\*

ASAP

## PROPOSED CASING AND CEMENTING PROGRAM

SIZE OF HOLE	SIZE OF CASING	WEIGHT PER FOOT	SETTING DEPTH	QUANTITY OF CEMENT
14 3/4"	10 3/4"	40.5# K-55	1000'	850 sx circ
7 7/8"	4 1/2"	9.5# K-55	TD	350 sx

Posted at  
12-12-83  
12-9-83

We propose to drill and test the Abo and intermediate formations. Approximately 1000' of surface casing will be set and cement circulated to shut off gravel and caving. If needed (lost circulation) 8 5/8" intermediate casing will be run to 1500' and cemented with enough cement calculated to tie back into the surface casing. If commercial, production casing will be run and cemented with adequate cover, perforated and stimulated as needed for production.

MUD PROGRAM: FW gel/LCM to 1000', Brine to 3200', Brine & KCL water to TD.

BOP PROGRAM: BOP's will be installed at the offset and tested daily.

GAS NOT DEDICATED.

IN ABOVE SPACE DESCRIBE PROPOSED PROGRAM: If proposal is to deepen or plug back, give data on present productive zone and proposed new productive zone. If proposal is to drill or deepen directionally, give pertinent data on subsurface locations and measured and true vertical depths. Give blowout preventer program, if any.

24.

SIGNED

*Cy Cowan*

TITLE Regulatory Agent

DATE 11/18/83

(This space for Federal or State office use)

PERMIT NO.

APPROVAL DATE

DEC 02 1983

APPROVED BY

'Orig. Sgd.' Earl R. Cunningham

District Manager

DATE DEC 02 1983

CONDITIONS OF APPROVAL, IF ANY:

APPROVAL SUBJECT TO  
GENERAL REQUIREMENTS AND  
SPECIAL STIPULATIONS  
ATTACHED

NEW MEXICO OIL CONSERVATION COMMISSION  
WELL LOCATION AND ACREAGE DEDICATION PLAT

Form C-102  
Supersedes C-128  
Effective 1-1-65

All distances must be from the outer boundaries of the Section.

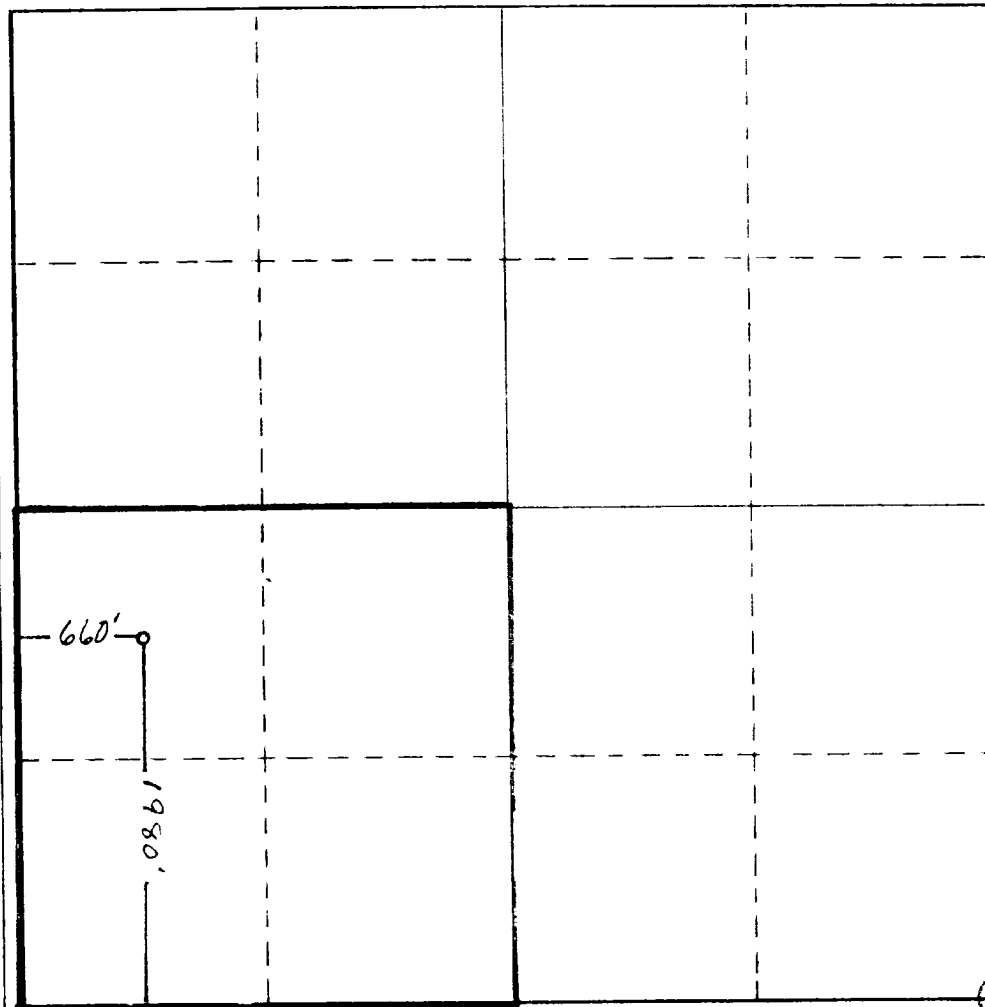
Operator <b>YATES PETROLEUM CORPORATION</b>			Lease <b>Monaghan "QY" Federal</b>		Well No. <b>10</b>
Unit Letter <b>L</b>	Section <b>27</b>	Township <b>5 South</b>	Range <b>24 East</b>	County <b>Chaves</b>	
Actual Footage Location of Well: <b>1980</b> feet from the <b>South</b> line and <b>660</b> feet from the <b>West</b> line					
Ground Level Elev. <b>4047.2' GL</b>	Producing Formation <b>Abo</b>		Pool <b>Pecos Slope Abo</b>		Dedicated Acreage: <b>160</b> Acres

1. Outline the acreage dedicated to the subject well by colored pencil or hachure marks on the plat below.
2. If more than one lease is dedicated to the well, outline each and identify the ownership thereof (both as to working interest and royalty).
3. If more than one lease of different ownership is dedicated to the well, have the interests of all owners been consolidated by communitization, unitization, force-pooling, etc?

☐ Yes ☐ No If answer is "yes," type of consolidation \_\_\_\_\_

If answer is "no," list the owners and tract descriptions which have actually been consolidated. (Use reverse side of this form if necessary.) \_\_\_\_\_

No allowable will be assigned to the well until all interests have been consolidated (by communitization, unitization, forced-pooling, or otherwise) or until a non-standard unit, eliminating such interests, has been approved by the Commission.



CERTIFICATION

I hereby certify that the information contained herein is true and complete to the best of my knowledge and belief.

*Cy Cowan*  
Name

**Cy Cowan**  
Position

**Regulatory Agent**  
Company

**Yates Petroleum Corp.**  
Date

**11/18/83**

I hereby certify that the well location shown on this plat was plotted from field notes of actual surveys made by me or under my supervision, and that the same is true and correct to the best of my knowledge and belief.

*L. Jones*  
L. JONES

Date Surveyed

**November 16, 1983**

Registered Professional Engineer  
and/or Land Surveyor

*Handwritten Signature*  
Certificate No.

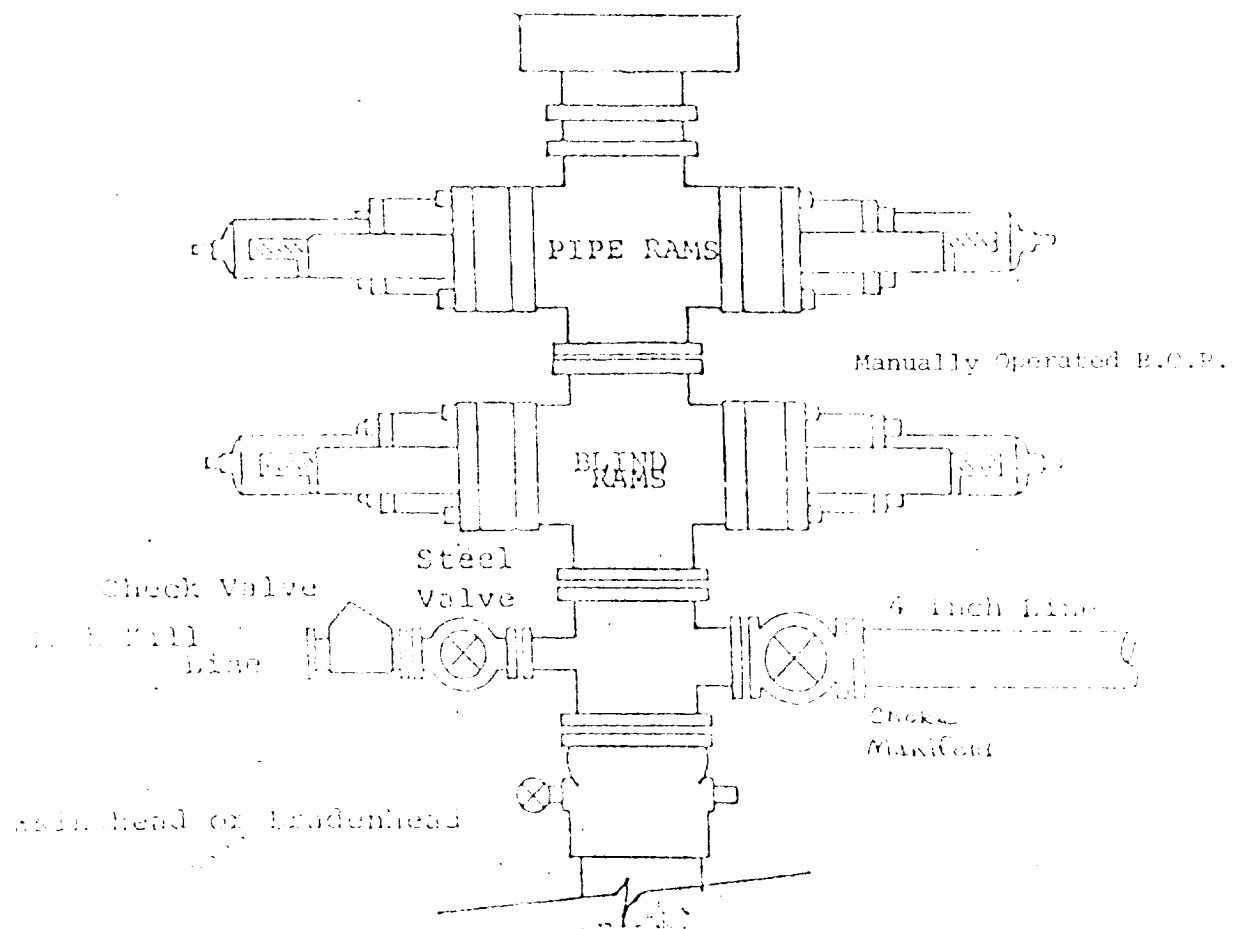
**3640**

0 330 660 990 1320 1650 1980 2310 2640 2000 1500 1000 500 0

# EXHIBIT B

## BOP DIAGRAM

RATED 3000<sup>#</sup>



YATES PETROLEUM CORPORATION  
Monaghan "QY" Federal #10  
1980' FSL and 660' FML  
Section 27-T5S-R24E

In conjunction with Form 9-331C, Application for Permit to Drill subject well, Yates Petroleum Corporation submits the following ten items of pertinent information in accordance with BLM requirements.

1. The geologic surface formation is sandy alluvium.
2. The estimated tops of geologic markers are as follows:

San Andres	578'
Glorieta	1568'
Fullerton	2878'
Abo	3626'
TD	4200'
3. The estimated depths at which anticipated water, oil or gas formations are expected to be encountered:

Water: appr. 250-350'

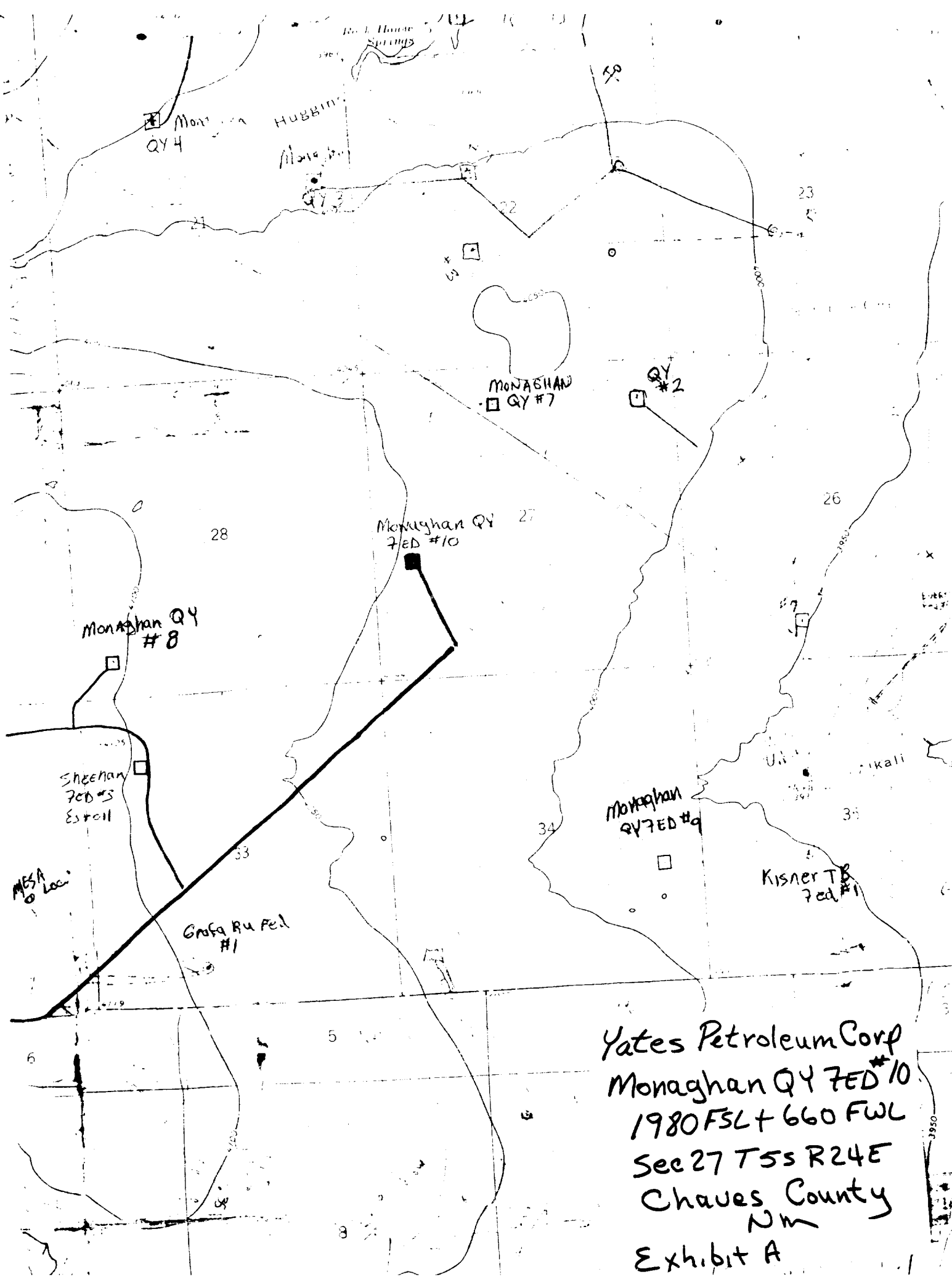
Oil or Gas: 3650' Abo
4. Proposed Casing Program: See Form 9-331C.
5. Pressure Control Equipment: See Form 9-331C.
6. Mud Program: See Form 9-331C.
7. Auxiliary Equipment: Kelly Cock; pit level indicators and flow sensor equipment; sub with full-opening valve on floor, drill pipe connection.
8. Testing, Logging and Coring Program:

Samples: Surface casing to TD.

DST's: As warranted.

Coring: None.

Logging: CNL-FDC TD to csg w/GR-CNL to surface and DLL from TD to csg.
9. No abnormal pressures or temperatures are anticipated.
10. Anticipated starting date: As soon as possible after approval.



YATES PETROLEUM CORP.  
Exhibit C

Reserve Pit  
bottom to be at  
ground level to  
1 ft.

NOTE:

inside walls must be as high and wide as outer walls of pit.

