

UNITED STATES
DEPARTMENT OF THE INTERIOR

GEOLOGICAL SURVEY

APPLICATION FOR PERMIT TO DRILL, DEEPEN, OR PLUG BACK

1a. TYPE OF WORK

DRILL ☒DEEPEN ☐ARTESIAN ☐

DEC 08 1983

O. C. D.

PLUG BACK ☐

b. TYPE OF WELL

OIL WELL ☐GAS WELL ☒

OTHER

SINGLE ZONE ☒MULTIPLE ZONE ☐

2. NAME OF OPERATOR

Mesa Petroleum Co. ✓

3. ADDRESS OF OPERATOR

P. O. Box 2009 / Amarillo, Texas 79189

4. LOCATION OF WELL (Report location clearly and in accordance with any State requirements.)*

At surface

990' FNL & 1650' FWL

NE 1/4

NW 1/4

At proposed prod. zone

Same

14. DISTANCE IN MILES AND DIRECTION FROM NEAREST TOWN OR POST OFFICE*

17 miles northeast of Roswell, New Mexico

15. DISTANCE FROM PROPOSED*

LOCATION TO NEAREST
PROPERTY OR LEASE LINE, FT.
(Also to nearest drig. unit line, if any)

990' / 990'

16. NO. OF ACRES IN LEASE

480

17. NO. OF ACRES ASSIGNED
TO THIS WELL

160

18. DISTANCE FROM PROPOSED LOCATION*

TO NEAREST WELL, DRILLING, COMPLETED,
OR APPLIED FOR, ON THIS LEASE, FT.

N/A

19. PROPOSED DEPTH

4500'

20. ROTARY OR CABLE TOOLS

Rotary

21. ELEVATIONS (Show whether DF, RT, GR, etc.)

3553' GR

22. APPROX. DATE WORK WILL START*

December 15, 1983

23.

PROPOSED CASING AND CEMENTING PROGRAM

SIZE OF HOLE	SIZE OF CASING	WEIGHT PER FOOT	SETTING DEPTH	QUANTITY OF CEMENT
14 3/4"	10 3/4"	40.5#	950'	700/300 SURFACE
9 1/2"	7 5/8"	26.4#	1600'	700/300 TIE BACK
6 1/4"	4 1/2"	10.5#	4500'	300 COVER ABO

Propose to drill 14 3/4" hole with freshwater to approximately 950' and run 10 3/4" casing. Will cement to surface and test casing with cementing head to 600 psi. Will reduce hole to 7 7/8" and drill on mud to a TD of approximately 4500' and run 4 1/2" casing. If circulation has been lost, will then ream out hole to 9 1/2" and run 7 5/8" casing to 1600' and drill out to TD with 6 1/4" hole.

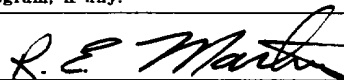
Operator's gas sales are dedicated.

XC: BLM-R (O+6), CEN RCDS, ACCTG, MAT CONT, OPS(FILE), MIDLAND, ROSWELL, DISTRICTS.

IN ABOVE SPACE DESCRIBE PROPOSED PROGRAM: If proposal is to deepen or plug back, give data on present productive zone and proposed new productive zone. If proposal is to drill or deepen directionally, give pertinent data on subsurface locations and measured and true vertical depths. Give blowout preventer program, if any.

24.

SIGNED



TITLE REGULATORY COORDINATOR

DATE 11-28-83

(This space for Federal or State office use)

PERMIT NO.

APPROVAL DATE

APPROVED BY

(ORIG. SGD.) ARMANDO A. LOPEZ

TITLE Acting District Manager

DATE 12-6-83

CONDITIONS OF APPROVAL, IF ANY:

APPROVAL SUBJECT TO
GENERAL REQUIREMENTS AND
SPECIAL STIPULATIONS
ATTACHED

See Instructions On Reverse Side

RECEIVED
NOV 29 10 27 AM '83
BUREAU OF LAND MANAGEMENT
ROSWELL DISTRICT

Noted A.P.
SD-1-1/1/Book
12-9-83

All distances must be from the outer boundaries of the Section.

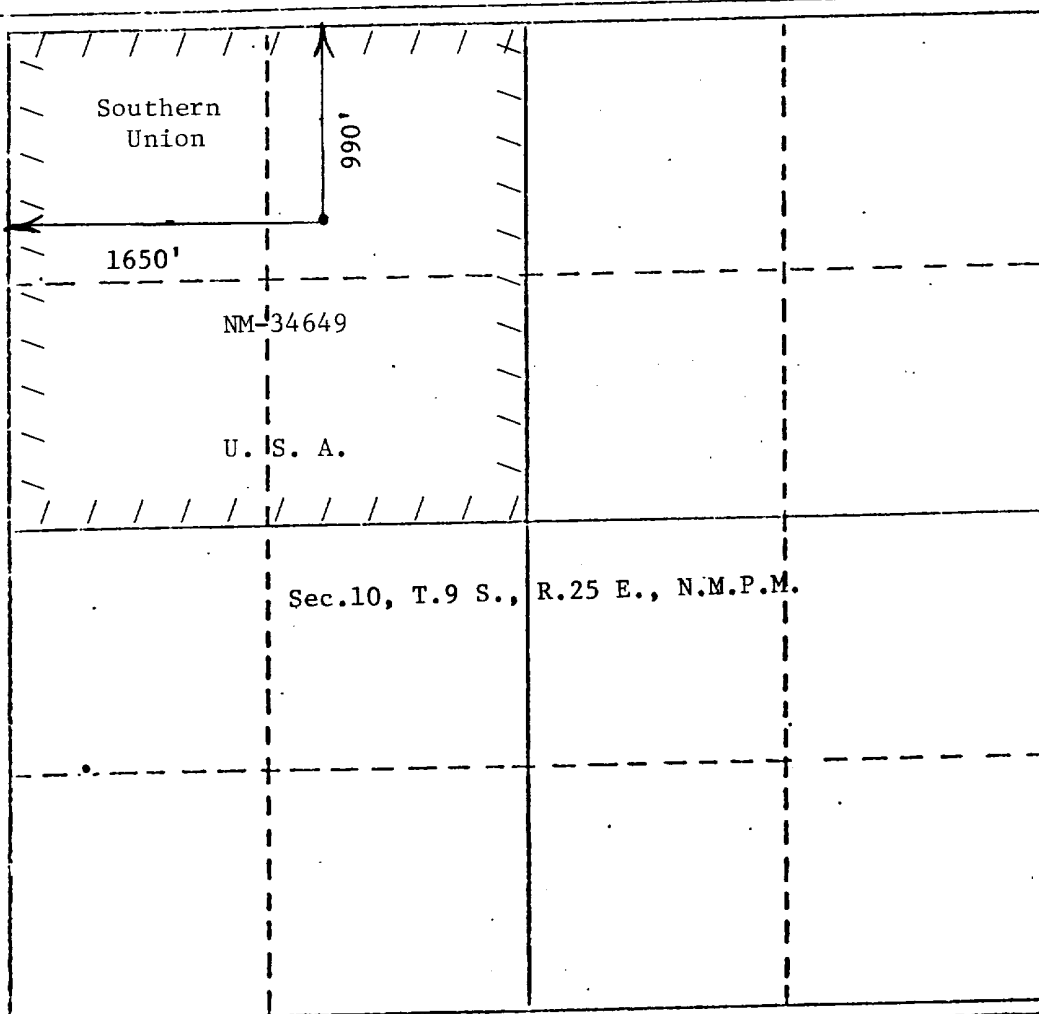
Operator Mesa Petroleum Co.			Lease Monaghan Federal		Well No. #1
Unit Letter C	Section 10	Township 9 South	Range 25 East	County Chaves	
Actual Postage Location of Well:					
1650 feet from the		West	line and	990	feet from the North line
Ground Level Elev. 3553	Producing Formation Abo		Pool South Undesignated Pecos Slope Abo		Dedicated Acreage: NW 1/4 160 Acres

1. Outline the acreage dedicated to the subject well by colored pencil or hatchure marks on the plat below.
2. If more than one lease is dedicated to the well, outline each and identify the ownership thereof (both as to working interest and royalty).
3. If more than one lease of different ownership is dedicated to the well, have the interests of all owners been consolidated by communitization, unitization, force-pooling, etc?

☐ Yes ☐ No If answer is "yes," type of consolidation _____

If answer is "no," list the owners and tract descriptions which have actually been consolidated. (Use reverse side of this form if necessary.) _____

No allowable will be assigned to the well until all interests have been consolidated (by communitization, unitization, forced-pooling, or otherwise) or until a non-standard unit, eliminating such interests, has been approved by the Division



CERTIFICATION

I hereby certify that the information contained herein is true and complete to the best of my knowledge and belief.

R. E. Mathis

Name
R. E. Mathis

Position
Regulatory Coordinator

Company
Mesa Petroleum Co.

Date
11-28-83

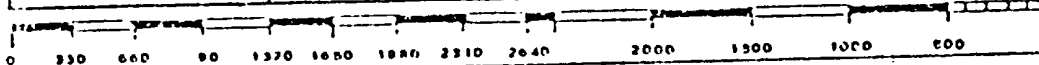
I hereby certify that the well location shown on this plat was plotted from field notes of actual surveys made by me or under my supervision, and that the same is true and correct to the best of my knowledge and belief.

JOHN D. JAQUESS

Date Surveyed
November 5, 1983

Registered Professional Engineer and/or Professional Surveyor
John D. Jaquess

Certificate No.
6290



MONAGHAN FEDERAL * 1

DESIGNATION OF OPERATOR

The undersigned is, on the records of the Bureau of Land Management, holder of lease

DISTRICT LAND OFFICE: Santa Fe, New Mexico
SERIAL No.: 34649

and hereby designates

NAME: Mesa Petroleum Company
ADDRESS: Vaughn Building, Suite 1000
Midland, Texas 79701

as his operator and local agent, with full authority to act in his behalf in complying with the terms of the lease and regulations applicable thereto and on whom the supervisor or his representative may serve written or oral instructions in securing compliance with the Operating Regulations with respect to (describe acreage to which this designation is applicable):

Township 9 South, Range 25 East, N.M.P.M.

Section 9: NW/4

Section 10: N/2

Chaves County, New Mexico

It is understood that this designation of operator does not relieve the lessee of responsibility for compliance with the terms of the lease and the Operating Regulations. It is also understood that this designation of operator does not constitute an assignment of any interest in the lease.

In case of default on the part of the designated operator, the lessee will make full and prompt compliance with all regulations, lease terms, or orders of the Secretary of the Interior or his representative.

The lessee agrees promptly to notify the supervisor of any change in the designated operator.

SOUTHERN UNION EXPLORATION COMPANY OF TEXAS



(Signature of lessee)
R. Craig Nielsen
Attorney-in-Fact

November 16, 1983

(Date)

1217 Main Street, Ste. 400, Dallas, TX 75202

(Address)

APPLICATION FOR PERMIT TO DRILL

MESA PETROLEUM CO.
MONAGHAN FEDERAL #1
990' FNL & 1650' FWL, SEC 10, T9S, R25E
CHAVES COUNTY, NEW MEXICO

LEASE NO. NM-34649

In conjunction with Form 9331-C, Application For Permit to Drill subject well, the following additional information is provided:

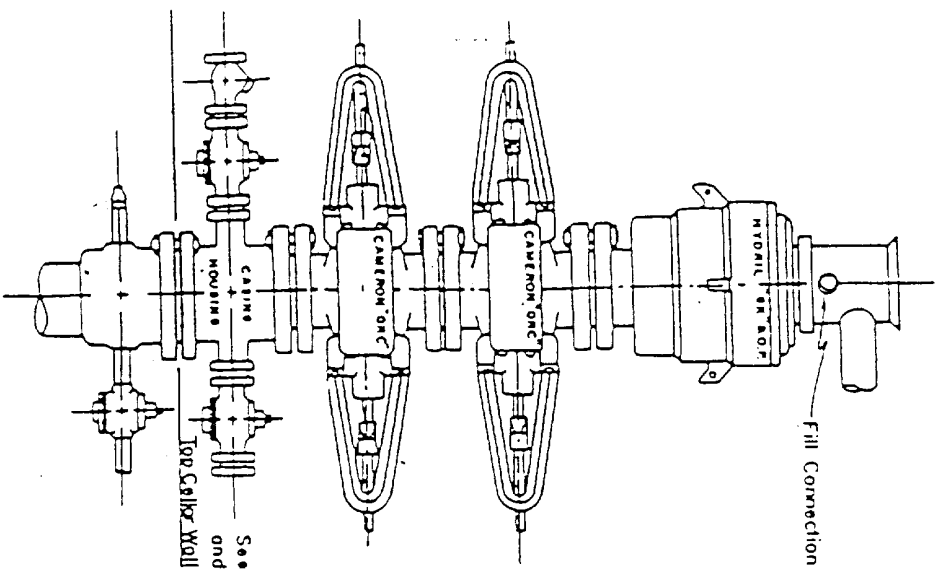
1. Applicable portions of the GENERAL REQUIREMENTS FOR OIL AND GAS OPERATIONS ON FEDERAL LEASES, Roswell District, Geological Survey of September 1, 1980 will be adhered to.

2. Geological markers are estimated as follows:

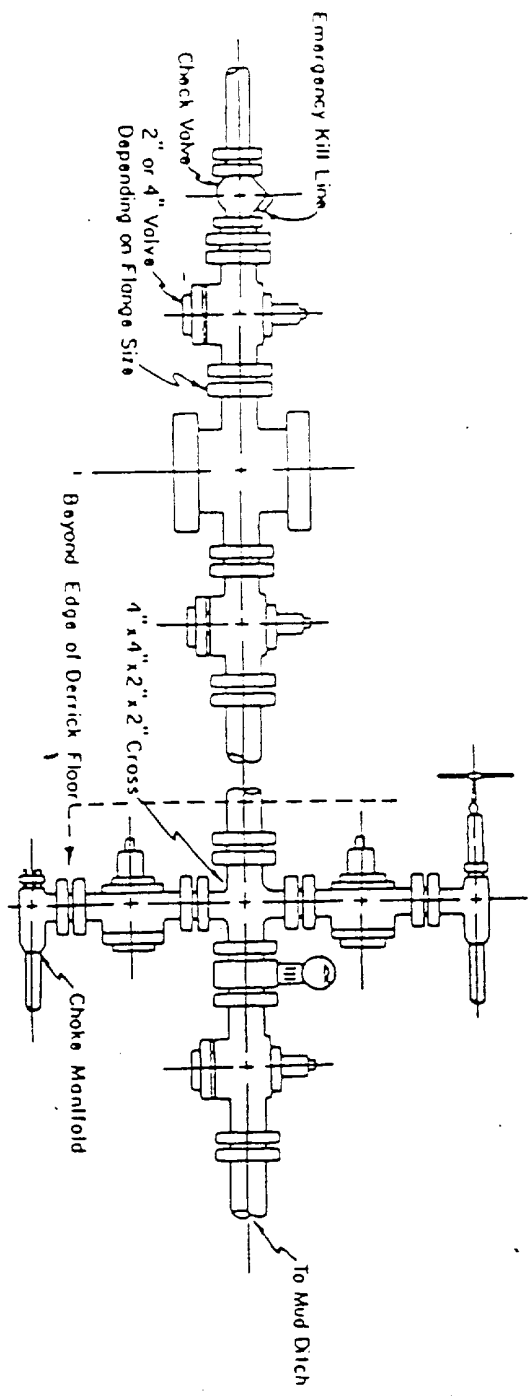
Seven Rivers	Surface
San Andres	802'
Glorieta	1406'
Tubb	2966'
Abo	3672'

3. Hydrocarbon bearing strata may occur in the Abo formation(s). No fresh water is expected to be encountered below 950'.
4. The Casing and Blowout Preventer Program will be determined by hole conditions as encountered. See Exhibit VI. Anticipate drilling with fresh water/mud using ram type preventer and rotating head for well control. The 10 3/4" casing will be set at approximately 950' to protect any fresh water zones and cemented to the surface. The 7 5/8" casing will be set at approximately 1600' if water zones have been encountered or omitted if not and ram type preventers installed. Sufficient amounts and kinds of cement would be used to ensure any water, gas, or oil zones encountered are isolated and shut off down to the casing point if run. The 4 1/2" production casing will be set at total depth or shallower depending upon the depth of the deepest commercial hydrocarbon bearing strata encountered.
5. No drill stem test or coring program is planned. The logging program may consist of a GR-CNL from surface to total depth and FDC from casing point to total depth.
6. Anticipated drilling time is ten days with completion operations to follow as soon as a completion unit is available.

Blow-out Preventers hydril and choke manifold are all 900 Series



3,000 PSI WORKING PRESSURE
BLOW-OUT PREVENTER HOOK-UP



3,000 PSI WORKING PRESSURE
KILL, CHOKE, AND FILL CONNECTIONS

DETAIL OF 4" FLOW LINE CHOKE ASSEMBLY
Minimum assembly for 3,000 PSI working pressure will consist of three preventers.
The bottom and middle preventers may be Cameron.

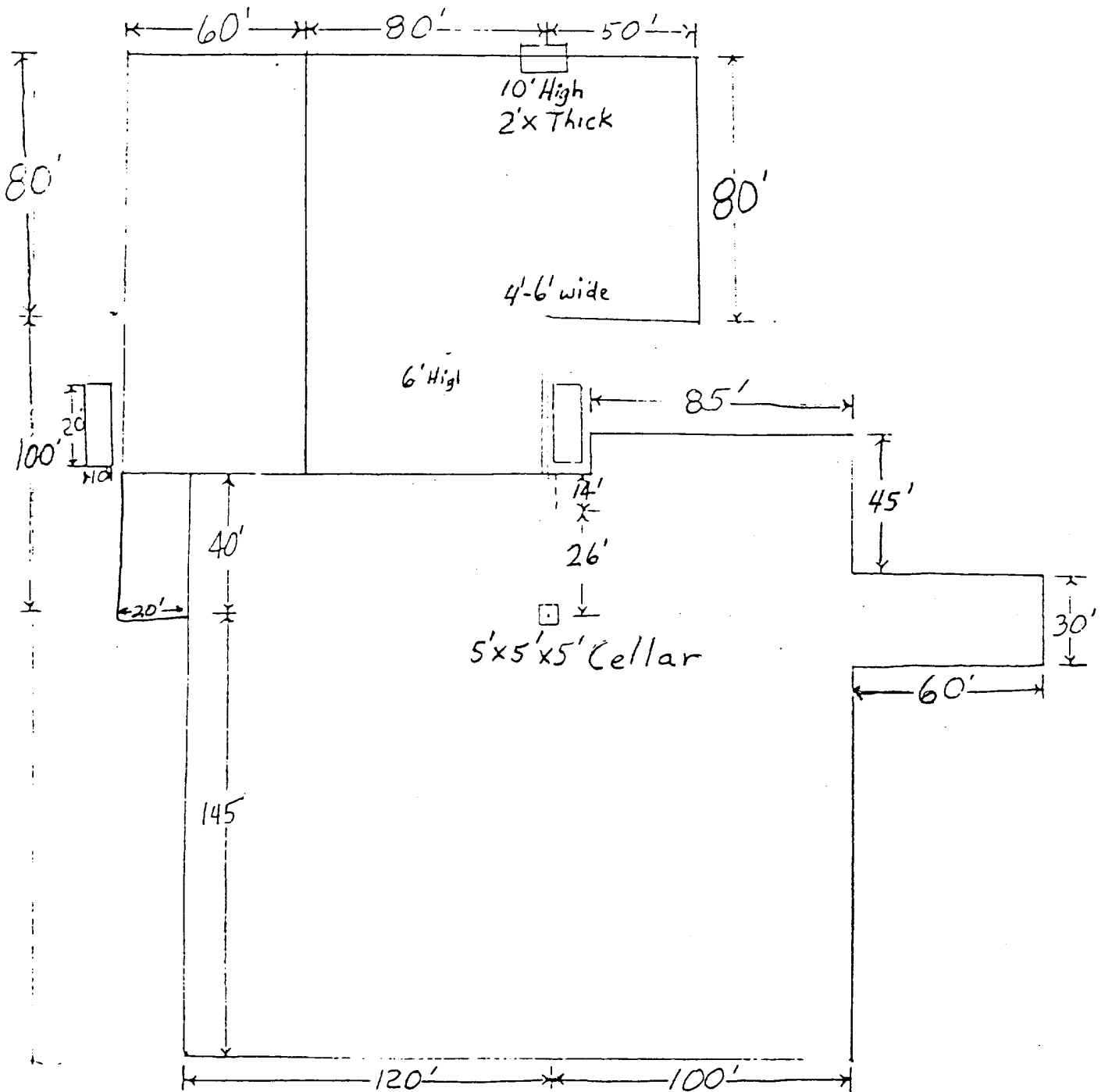
NOTE: HYDRIL not installed on shallow-low pressure wells.
RAM type BOPs are API 10" X 3000 PSI



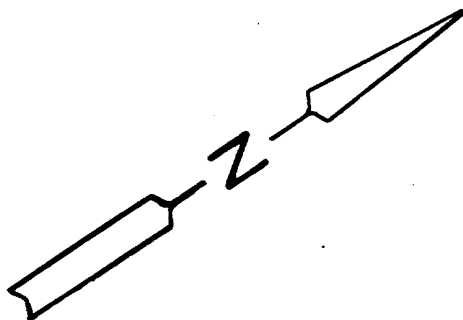
MESA
PETROLEUM CO.
ONSHORE DIVISION

EXHIBIT VI

BY:	DRAWN BY:
DATE:	SCALE:



6"-8" Watered & Compacted Caliche
ON PAD & ROAD IF NEEDED



MESA
PETROLEUM CO.
ONSHORE DIVISION

EXHIBIT V
FOR PROPOSED MONAGHAN FEDERAL #1

BY:	DRAWN BY:
DATE:	SCALE: