

RECEIVED
SUBMIT IN DUPLICATE
(Other instructions on reverse side)

UNITED STATES
DEPARTMENT OF THE INTERIOR
GEOLOGICAL SURVEY

DEC 5 1983

APPLICATION FOR PERMIT TO DRILL, DEEPEN, OR PLUG BACK

1a. TYPE OF WORK
DRILL ☒ DEEPEN ☐ PLUG BACK ☐

b. TYPE OF WELL
OIL WELL ☐ GAS WELL ☒ OTHER ☐

2. NAME OF OPERATOR
STEVENS OPERATING CORPORATION

3. ADDRESS OF OPERATOR
P. O. Box 2408, Roswell, New Mexico 88201

4. LOCATION OF WELL (Report location clearly and in accordance with any State requirements.)
At surface
1980' FNL 1980' FWL Sec. 9, T-7-S, R-26-E
At proposed prod. zone Same

RECEIVED BY
DEC 12 1983
O. C. D.
ARTESIA, OFFICE
W.F.

14. DISTANCE IN MILES AND DIRECTION FROM NEAREST TOWN OR POST OFFICE*

25.5 Airmiles northeast of Roswell

15. DISTANCE FROM PROPOSED* LOCATION TO NEAREST PROPERTY OR LEASE LINE, FT. (Also to nearest drig. unit line, if any)
N/A

16. NO. OF ACRES IN LEASE
1160

17. NO. OF ACRES ASSIGNED TO THIS WELL
100

18. DISTANCE FROM PROPOSED LOCATION* TO NEAREST WELL, DRILLING, COMPLETED, OR APPLIED FOR, ON THIS LEASE, FT.
N/A

19. PROPOSED DEPTH
4400'

20. ROTARY OR CABLE TOOL
Rotary

21. ELEVATIONS (Show whether DF, RT, GR, etc.)
3627.7 GR

23. PROPOSED CASING AND CEMENTING PROGRAM

SIZE OF HOLE	SIZE OF CASING	WEIGHT PER FOOT	SETTING DEPTH
11"	8 5/8	24.0#	750'
7 7/8	4 1/2	10.5#	4400'

22. APPROX. DATE WORK WILL START*
Dec 1983

Well will be drilled to a total depth of 4500' potential pay zone evaluated.
If commercial production is indicated Well will be selectively completed and evaluated.
Gas is dedicated under Contract No. 5304 with Transwestern Pipeline Company.

- Attached are:
1. Well Location and Dedication Plat
 2. Supplemental drilling data
 3. Surface Use Plan

IN ABOVE SPACE DESCRIBE PROPOSED PROGRAM: If proposal is to deepen or plug back, give data on present productive zone. If proposal is to drill or deepen directionally, give pertinent data on subsurface locations and measured and/or estimated permeability and/or porosity of the zone to be drilled or deepened. If the proposed program is to plug back, give data on the zone to be plugged and the reason for plugging.

24. SIGNED *Earl R. Cunningham* TITLE Production Controller

(This space for Federal or State office use)

PERMIT NO.
APPROVED BY 'Orig. Sgd.' Earl R. Cunningham

APPROVAL DATE DEC 09 1983
District Manager

CONDITIONS OF APPROVAL
APPROVAL SUBJECT TO
GENERAL REQUIREMENTS AND
SPECIAL STIPULATIONS
ATTACHED

*See Instructions On Reverse Side

Washed 242
SD-1011 Bank
12-16-83

NEW MEXICO OIL CONSERVATION COMMISSION
WELL LOCATION AND ACREAGE DEDICATION PLAT

Form C-102
Supersedes C-128
Effective 1-4-65

All distances must be from the outer boundaries of the Section.

Operator STEVENS OPERATING CO.			Lease HELEN COLLINS FEDERAL		Well No. 4
Unit Letter F	Section 9	Township 7 SOUTH	Range 26 EAST	County CHAVES	
Actual Footage Location of Well:					
1980		feet from the NORTH	line and	1980	feet from the WEST
Ground Level Elev. 3627.7	Producing Formation Abo		Pool Pecos Slope Abo	Dedicated Acreage: 160 Acres	

1. Outline the acreage dedicated to the subject well by colored pencil or hatchure marks on the plat below.
2. If more than one lease is dedicated to the well, outline each and identify the ownership thereof (both as to working interest and royalty).
3. If more than one lease of different ownership is dedicated to the well, have the interests of all owners been consolidated by communitization, unitization, force-pooling, etc?

☐ Yes ☐ No If answer is "yes," type of consolidation _____

If answer is "no," list the owners and tract descriptions which have actually been consolidated. (Use reverse side of this form if necessary.) _____

No allowable will be assigned to the well until all interests have been consolidated (by communitization, unitization, forced-pooling, or otherwise) or until a non-standard unit, eliminating such interests, has been approved by the Commission.

CERTIFICATION

I hereby certify that the information contained herein is true and complete to the best of my knowledge and belief.

Pat Thompson

Name

Production Controller

Position

Stevens Operating Corporation

Company

December 5, 1983

Date

I hereby certify that the well location shown on this plat was plotted from field notes of actual surveys made by me or under my supervision, and that the same is true and correct to the best of my knowledge and belief.

Date Surveyed

DECEMBER 1, 1983

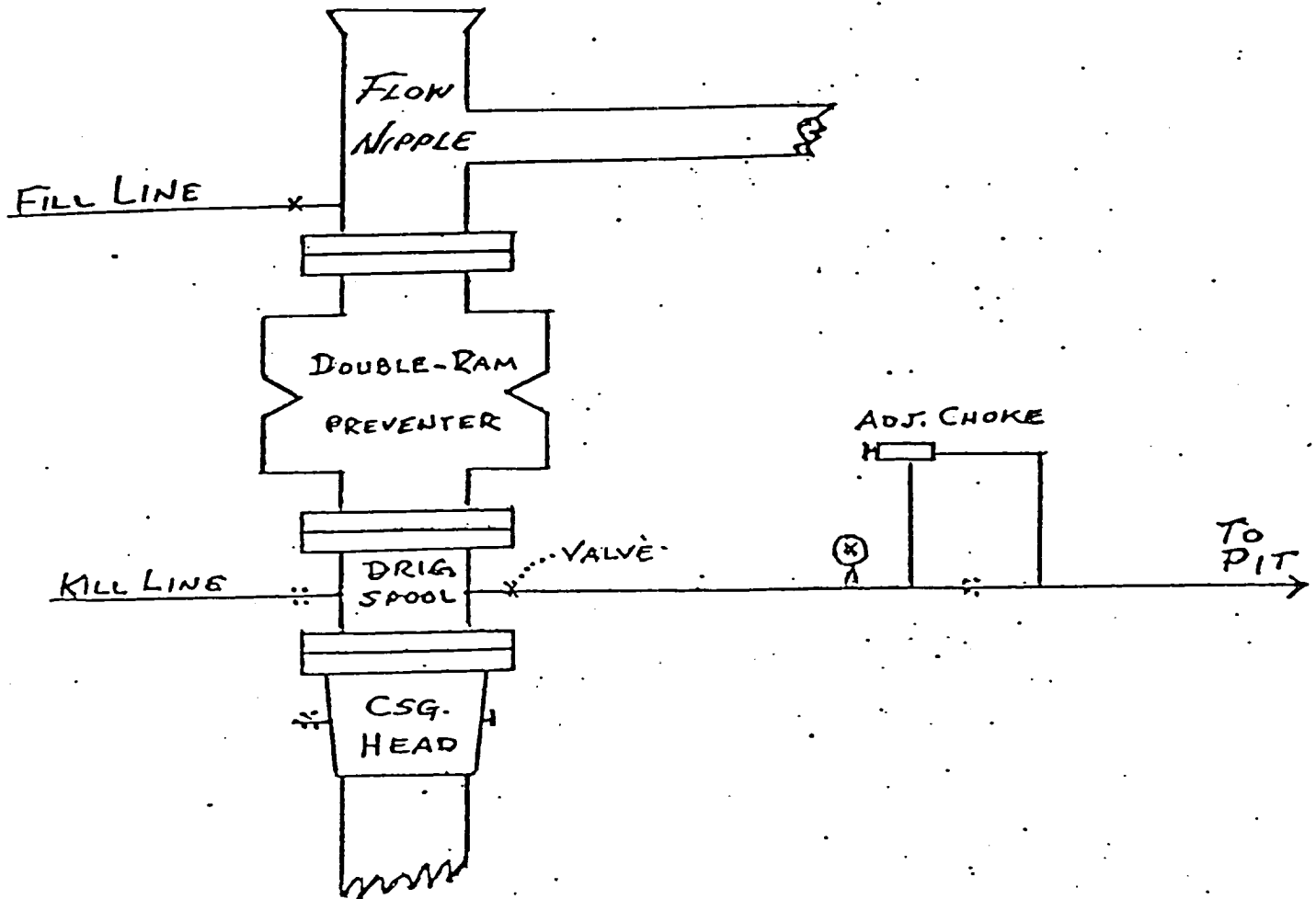
Registered Professional Engineer and/or Land Surveyor

Certificate No. **JOHN W. WEST,**

676

B O P & CHOKE MANIFOLD

SERIES 900



SUPPLEMENTAL DRILLING DATA

STEVENS OPERATING CORPORATION
HELEN COLLINS FEDERAL #4
1980 FNL 1980 FWL, Sec. 9, T-7-S R-26-E
CHAVES COUNTY, NEW MEXICO

1. SURFACE FORMATION: Alluvium

2. ESTIMATED TOPS OF GEOLOGIC MARKERS:

San Andres	584'	P-1	1039'
Glorietta	1670'	Yeso	3089'
Abo	3751'	TD	4400'

3. ANTICIPATED POROSITY ZONES:

Water	150' - 200'
Oil	1000' - 1670'
Gas	3750' - 4400'

4. CASING DESIGN:

<u>Size</u>	<u>Interval</u>	<u>Weight</u>	<u>Grade</u>	<u>Joint</u>	<u>Condition</u>
8 5/8"	0 - 750'	24.0#	K-55	STC	New
4 1/2"	0 - 4400'	10.5#	K-55	STC	New

5. SURFACE CONTROL EQUIPMENT: A double Ram-type preventer. (600 Series) A Sketch of BOP stack is attached.

6. CIRCULATING MEDIUM:

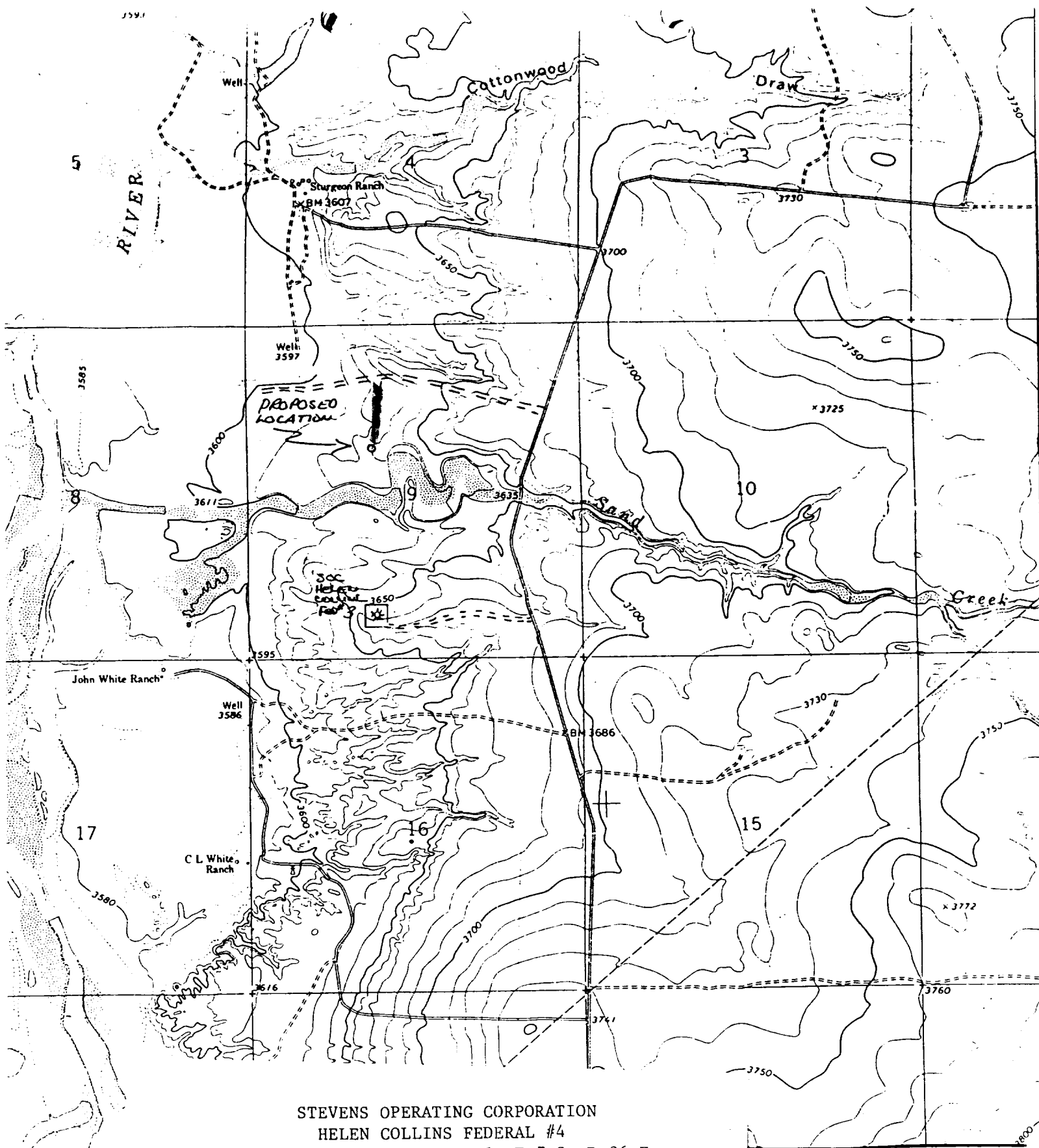
0 - 750	Fresh water mud with gel added if needed.
750 - 4400	Salt water mud, conditioned as necessary for control of viscosity and water loss.

7. AUXILIARY EQUIPMENT: Drill string safety valve.

8. TESTING, LOGGING AND CORING PROGRAMS: Coring & testing may be performed in zones of interest. Compensated Neutron-Formation Density w/Gamma Ray Log. 0 - T.D.. Dual Laterlog Shoe to T.D.

9. ABNORMAL PRESSURES, TEMPERATURES OR GASES: None anticipated.

10. ANTICIPATED DATES: It is planned that drilling operations will commence about December 8, 1983. Duration of drilling and completion operations should be 20 to 60 days.



STEVENS OPERATING CORPORATION
 HELEN COLLINS FEDERAL #4
 1980 FNL 1980 FWL, Sec. 9, T-7-S, R-26-E
 CHAVES COUNTY, NEW MEXICO

EXHIBIT "B"

County Road = = =
 New Road —————