

UNITED STATES  
DEPARTMENT OF THE INTERIOR

## GEOLOGICAL SURVEY

## APPLICATION FOR PERMIT TO DRILL, DEEPEN, OR PLUG BACK

1a. TYPE OF WORK  
DRILL ☒ DEC 25 PM '83  
DEEPEN ☐ PLUG BACK ☐

b. TYPE OF WELL  
OIL WELL ☐ GAS WELL ☒ OTHER ☐

2. NAME OF OPERATOR  
Yates Petroleum Corporation

3. ADDRESS OF OPERATOR  
207 S. 4th, Artesia, New Mexico 88210

4. LOCATION OF WELL (Report location clearly and in accordance with any State requirements.)  
At surface 1650' FSL and 1980' FWL  
At proposed prod. zone same

14. DISTANCE IN MILES AND DIRECTION FROM NEAREST TOWN OR POST OFFICE\*  
Approximately 19 miles NNE of Roswell, New Mexico.

15. DISTANCE FROM PROPOSED\* LOCATION TO NEAREST PROPERTY OR LEASE LINE, FT.  
(Also to nearest drlg. unit line, if any) 1650'

16. NO. OF ACRES IN LEASE 2520

17. NO. OF ACRES ASSIGNED TO THIS WELL 160

18. DISTANCE FROM PROPOSED\* LOCATION TO NEAREST WELL, DRILLING COMPLETED OR APPLIED FOR, ON THIS LEASE, FT. 4150'

19. PROPOSED DEPTH 4150'

20. ROTARY OR CABLE TOOLS Rotary

21. ELEVATIONS (Show whether DF, RT, GR, etc.) 3651.1' GL

22. APPROX. DATE WORK WILL START\* ASAP

PROPOSED CASING AND CEMENTING PROGRAM				
SIZE OF HOLE	SIZE OF CASING	WEIGHT PER FOOT	SETTING DEPTH	QUANTITY OF CEMENT
14 3/4"	10 3/4"	40.5# J-55	1000'	900 sx circ
12 1/4"	8 5/8"	24# J-55	1500'	(optional)
7 7/8"	4 1/2"	9.5# J-55	TD	350 sx

We propose to drill and test the Abo and intermediate formations. Approximately 1000' of surface casing will be set and cement circulated to shut off gravel and caving. If needed (lost circulation) 8 5/8" intermediate casing will be run to 1500' and cemented with enough cement calculated to tie back into the surface casing. If commercial, production casing will be run and cemented with adequate cover, perforated and stimulated as needed for production.

MUD PROGRAM: FW gel/LCM to 1000', Brein to 3200', Brine/KCL water to TD.

BOP PROGRAM: BOP's will be installed at the offset and tested daily.

GAS NOT DEDICATED.

IN ABOVE SPACE DESCRIBE PROPOSED PROGRAM: If proposal is to deepen or plug back, give data on present productive zone and proposed new productive zone. If proposal is to drill or deepen directionally, give pertinent data on subsurface locations and measured and true vertical depths. Give blowout preventer program, if any.

24. SIGNED Cy Cavan TITLE Regulatory Agent DATE 11/22/83  
(This space for Federal or State office use)

PERMIT NO. APPROVAL DATE

APPROVED BY S/Richard Bastin Acting District Manager DATE DEC 09 1983  
CONDITIONS OF APPROVAL, IF ANY: APPROVAL SUBJECT TO

GENERAL REQUIREMENTS AND  
SPECIAL STIPULATIONS  
ATTACHED

Posted A P  
JD-10 H/L Book  
12-16-83

NEW MEXICO OIL CONSERVATION COMMISSION  
WELL LOCATION AND ACREAGE DEDICATION PLAT

Form C-102  
Supersedes C-128  
Effective 1-1-65

All distances must be from the outer boundaries of the Section.

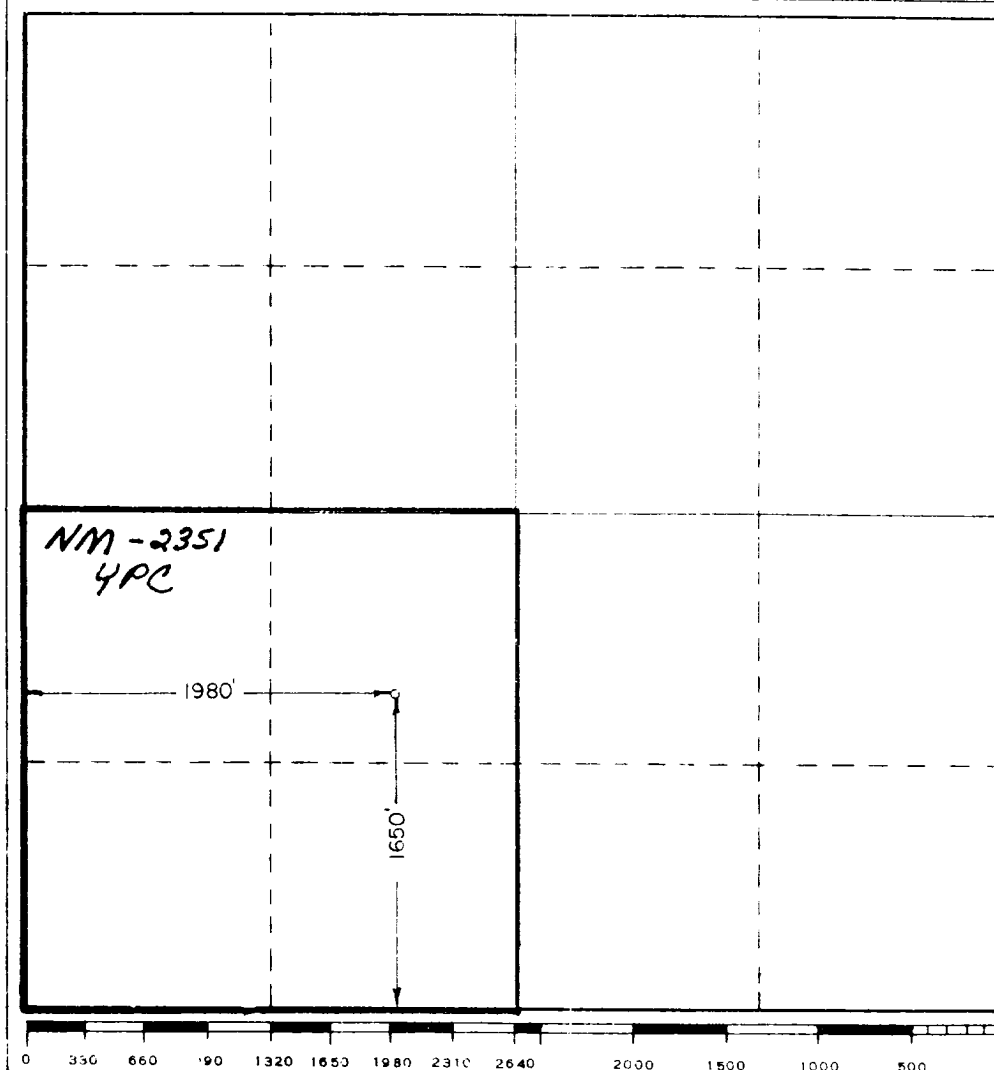
Operator <b>YATES PETROLEUM CORPORATION</b>			Lease <b>FEDERAL "HY"</b>		Well No. <b>10</b>
Unit Letter <b>K</b>	Section <b>28</b>	Township <b>7 South</b>	Range <b>25 East</b>	County <b>Chaves</b>	
Actual Plotting Location of Well:					
<b>1980</b> feet from the <b>West</b>		<b>1650</b> feet from the <b>South</b>			
Ground Level Elev. <b>3651.1</b>	Producing Formation <b>Abo</b>	Pool <b>Pecos Slope Abo</b>		Estimated Acreage <b>160</b> Acres	

1. Outline the acreage dedicated to the subject well by colored pencil or hatchure marks on the plat below.
2. If more than one lease is dedicated to the well, outline each and identify the ownership thereof (both as to working interest and royalty).
3. If more than one lease of different ownership is dedicated to the well, have the interests of all owners been consolidated by communitization, unitization, force-pooling, etc?

☐ Yes ☐ No If answer is "yes," type of consolidation \_\_\_\_\_

If answer is "no," list the owners and tract descriptions which have actually been consolidated. (Use reverse side of this form if necessary.) \_\_\_\_\_

No allowable will be assigned to the well until all interests have been consolidated (by communitization, unitization, forced-pooling, or otherwise) or until a non-standard unit, eliminating such interests, has been approved by the Commission.



CERTIFICATION

I hereby certify that the information contained herein is true and complete to the best of my knowledge and belief.

Name  
**Cy Cowan**

Position  
**Regulatory Agent**

Company  
**Yates Petroleum Corp.**

Date  
**11/22/83**

I hereby certify that the well location shown on this plat was plotted from field notes of actual surveys made by me or under my supervision, and that the same is true and correct to the best of my knowledge and belief.

Date Surveyed  
**11/17/83**

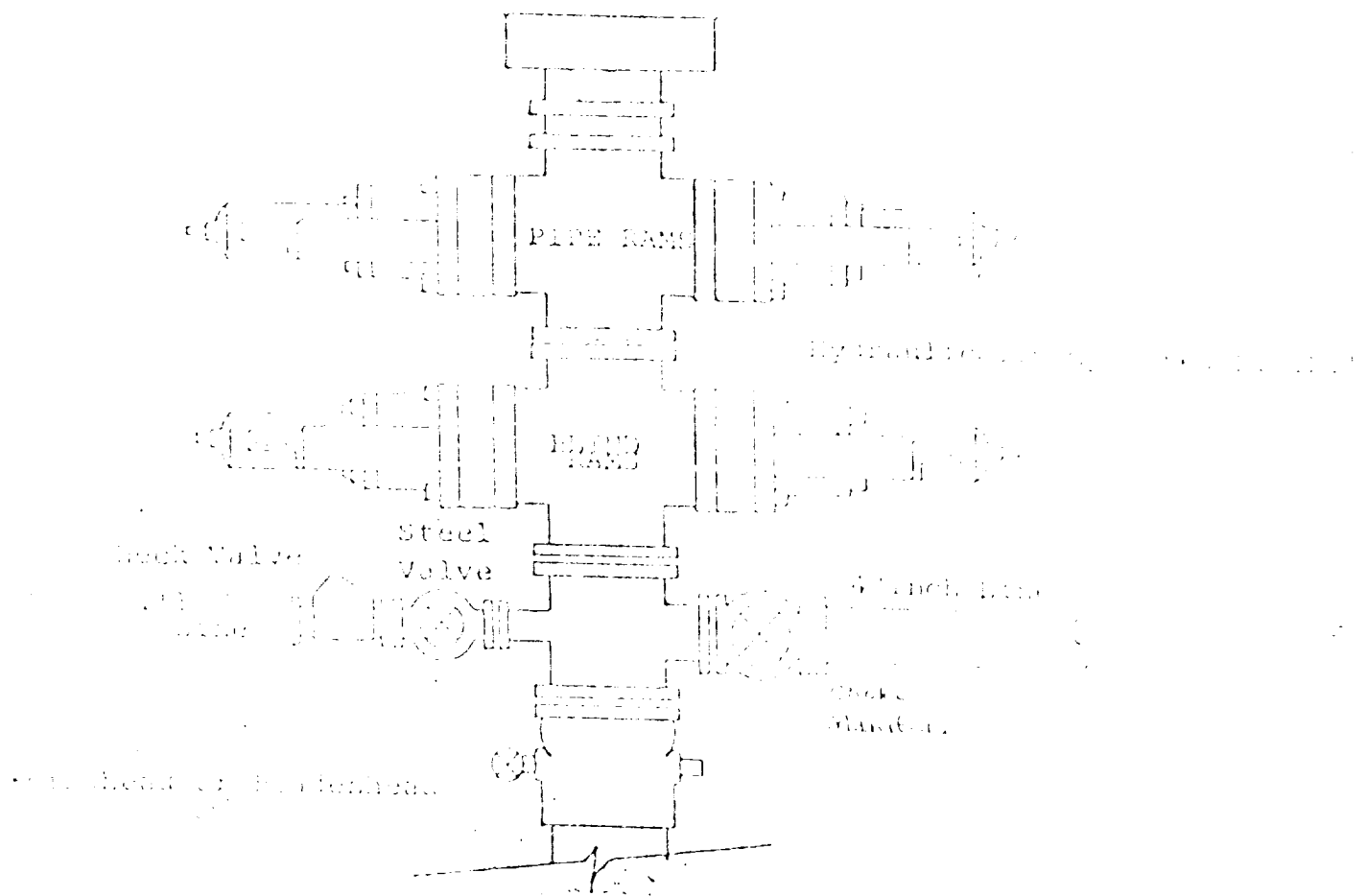
Registered Professional Engineer  
and/or Land Surveyor

Certificate No.  
**3640**

# EXHIBIT B

BDP DIAGRAM

RATED 3000#



YATES PETROLEUM CORPORATION  
Federal "HY" #10  
1650' FSL and 1980' FWL  
Section 28-T7S-R25E  
Chaves County, New Mexico

RECEIVED

DEC 1 1 25 PM '83

In conjunction with Form 9-331C, Application for Permit to Drill subject well, Yates Petroleum Corporation submits the following ten items of pertinent information in accordance with BLM requirements.

BUREAU OF LAND MGMT  
ROSWELL DISTRICT

1. The geologic surface formation is quaternary alluvium.
2. The estimated tops of geologic markers are as follows:

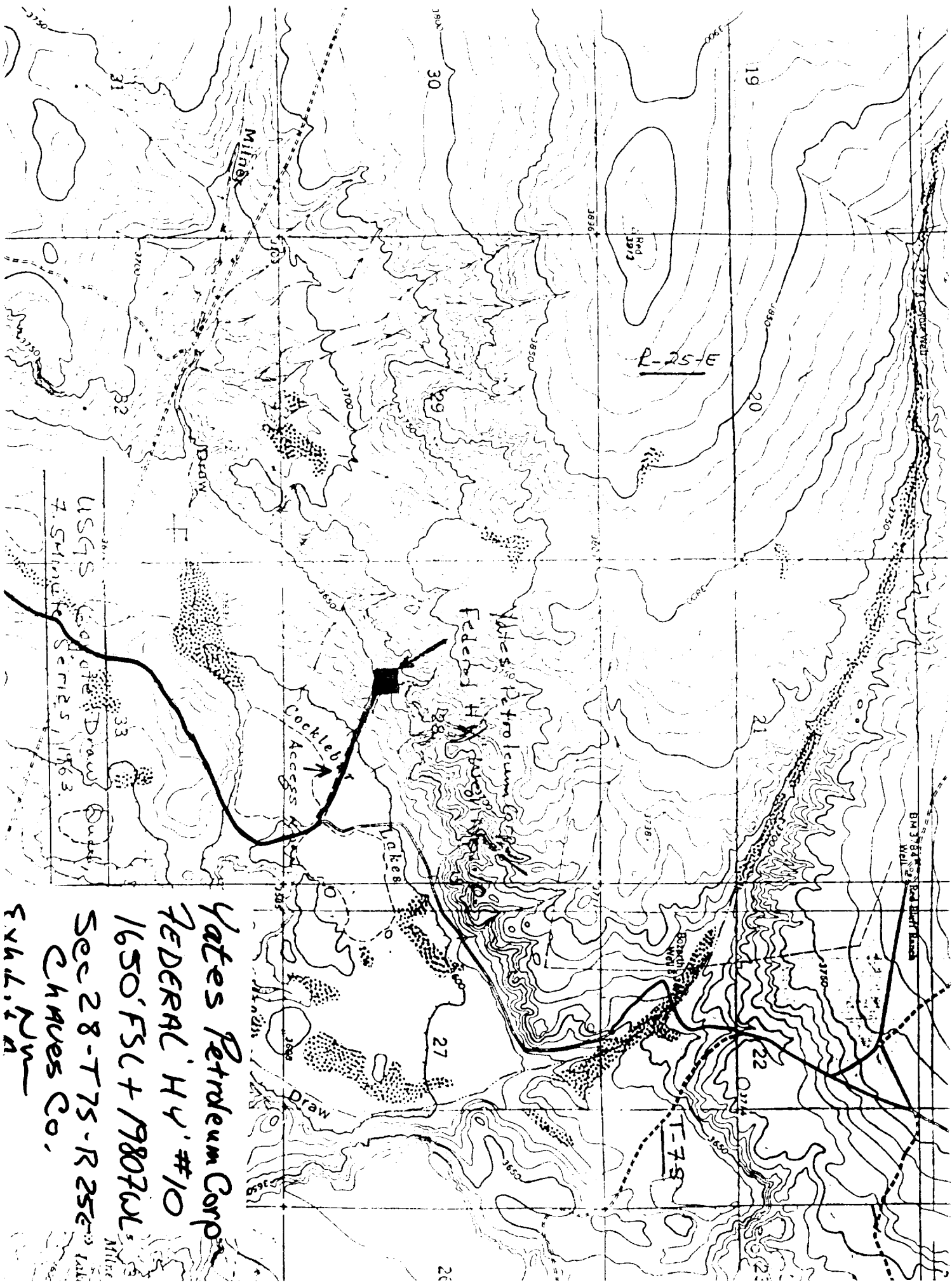
San Andres	420'
Glorieta	1388'
Fullerton	2828'
Abo	3482'
TD	4150'

3. The estimated depths at which anticipated water, oil or gas formations are expected to be encountered:

Water: 275-300'

Oil or Gas: Abo 3580'

4. Proposed Casing Program: See Form 9-331C.
5. Pressure Control Equipment: See Form 9-331C.
6. Mud Program: See Form 9-331C.
7. Auxiliary Equipment: Kelly Cock; pit level indicators and flow sensor equipment; sub with full-opening valve on floor, drill pipe connection.
8. Testing, Logging and Coring Program:  
Samples: Surface casing to TD.  
DST's: As warranted.  
Coring: None.  
Logging: CNL-FDC TD to csg w/GR-CNL to surface, DLL from TD to csg.
9. No abnormal pressures or temperatures are anticipated.
10. Anticipated starting date: As soon as possible after approval.



Yates Petroleum Corp  
FEDERAL HY #10  
1650' FSL + 1980 FWL  
Sec 28-T7S-R25E  
Chaves Co.  
E.V.H.L. IV

USGS Coastal & Drainage  
7.5 Minute Series, 1963

YATES PETROLEUM CORP.  
Exhibit C

