

UNITED STATES
DEPARTMENT OF THE INTERIOR
GEOLOGICAL SURVEY

APPLICATION FOR PERMIT TO DRILL, DEEPEN OR PLUG BACK

1a. TYPE OF WORK

DRILL ☒DEEPEN ☐PLUG BACK ☐

b. TYPE OF WELL

OIL
WELL ☐GAS
WELL ☒OTHER ☐

2. NAME OF OPERATOR

STEVENS OPERATING CORPORATION

3. ADDRESS OF OPERATOR

P. O. Box 2203, Roswell, New Mexico 88201 ROSWELL, NEW MEXICO

4. LOCATION OF WELL (Report location clearly and in accordance with any State requirements.)

At surface

1780 FNL 1980 FEL Sec. 9, T-7-S, R-26-E

At proposed prod. zone

Same

14. DISTANCE IN MILES AND DIRECTION FROM NEAREST TOWN OR POST OFFICE*

25.5 Airmiles northeast of Roswell

15. DISTANCE FROM PROPOSED*

LOCATION TO NEAREST
PROPERTY OR LEASE LINE, FT.
(Also to nearest drig. unit line, if any) N/A18. DISTANCE FROM PROPOSED LOCATION*
TO NEAREST WELL, DRILLING, COMPLETED,
OR APPLIED FOR, ON THIS LEASE, FT.

N/A

16. NO. OF ACRES IN LEASE

1160

19. PROPOSED DEPTH

4400'

17. NO. OF ACRES ASSIGNED
TO THIS WELL

160

20. ROTARY OR CABLE TOOLS

Rotary

21. ELEVATIONS (Show whether DF, RT, GR, etc.)

3671 GR

23.

PROPOSED CASING AND CEMENTING PROGRAM

SIZE OF HOLE	SIZE OF CASING	WEIGHT PER FOOT	SETTING DEPTH	QUANTITY OF CEMENT
12 1/4	8 5/8	24.0#	750'	Sufficient to Circulate
7 7/8	4 1/2	10.5#	4400'	Sufficient to tie into a 8 5/8"

Well will be drilled to a total depth of 4500' potential pay zones will be evaluated.
If commercial production is indicated Well will be selectively perforated and
stimulated. Gas is dedicated under Contract No. 5304 with Transwestern Pipeline
Company.

Attached are: 1. Well Location and Dedication Plat
2. Supplemental drilling data
3. Surface Use Plan

IN ABOVE SPACE DESCRIBE PROPOSED PROGRAM: If proposal is to deepen or plug back, give data on present productive zone and proposed new productive zone. If proposal is to drill or deepen directionally, give pertinent data on subsurface locations and measured and true vertical depths. Give blowout preventer program, if any.

24.

SIGNED

Earl R. Cunningham

TITLE Production Controller

DATE 12-16-83

(This space for Federal or State office use)

PERMIT NO.

APPROVAL DATE

APPROVED BY 'Orig. Sgd.' Earl R. Cunningham

District Manager

TITLE

DATE DEC 16 1983

CONDITIONS OF APPROVAL, IF ANY:

APPROVAL SUBJECT TO
GENERAL REQUIREMENTS AND
SPECIAL STIPULATIONS
ATTACHED

*See Instructions On Reverse Side

NEW MEXICO OIL CONSERVATION COMMISSION
WELL LOCATION AND ACREAGE DEDICATION PLAT

Form C-102
Supersedes C-128
Effective 1-1-85

All distances must be from the outer boundaries of the Section.

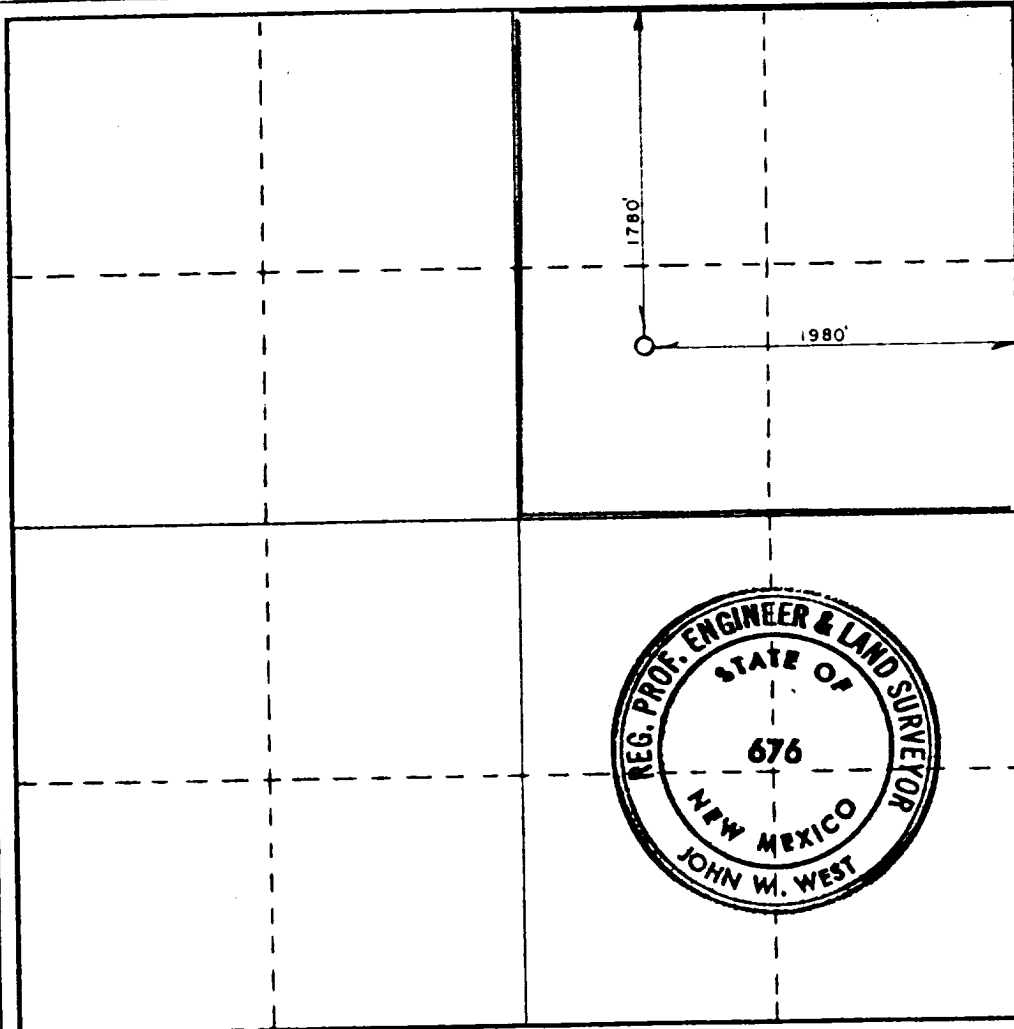
Operator STEVENS OPERATING CO.			Lease HELEN COLLINS FEDERAL		Well No. 5
Unit Letter G	Section 9	Township 7 SOUTH	Range 26 EAST	County CHAVES	
Actual Footage Location of Well: 1780 feet from the NORTH line and 1980 feet from the EAST line					
Ground Level Elev. 3671	Producing Formation Abo		Pool Pecos Slope Abo	Dedicated Acreage: 160 Acres	

1. Outline the acreage dedicated to the subject well by colored pencil or hachure marks on the plat below.
2. If more than one lease is dedicated to the well, outline each and identify the ownership thereof (both as to working interest and royalty).
3. If more than one lease of different ownership is dedicated to the well, have the interests of all owners been consolidated by communitization, unitization, force-pooling, etc?

☐ Yes ☐ No If answer is "yes," type of consolidation _____

If answer is "no," list the owners and tract descriptions which have actually been consolidated. (Use reverse side of this form if necessary.) _____

No allowable will be assigned to the well until all interests have been consolidated (by communitization, unitization, forced-pooling, or otherwise) or until a non-standard unit, eliminating such interests, has been approved by the Commission.



CERTIFICATION

I hereby certify that the information contained herein is true and complete to the best of my knowledge and belief.

Pat Thompson
Name

Pat Thompson

Position

Production Controller

Company

Stevens Operating Corporation

Date

12/16/83

I hereby certify that the well location shown on this plat was plotted from field notes of actual surveys made by me or under my supervision, and that the same is true and correct to the best of my knowledge and belief.

Date Surveyed

DECEMBER 6, 1983

Registered Professional Engineer and/or Land Surveyor

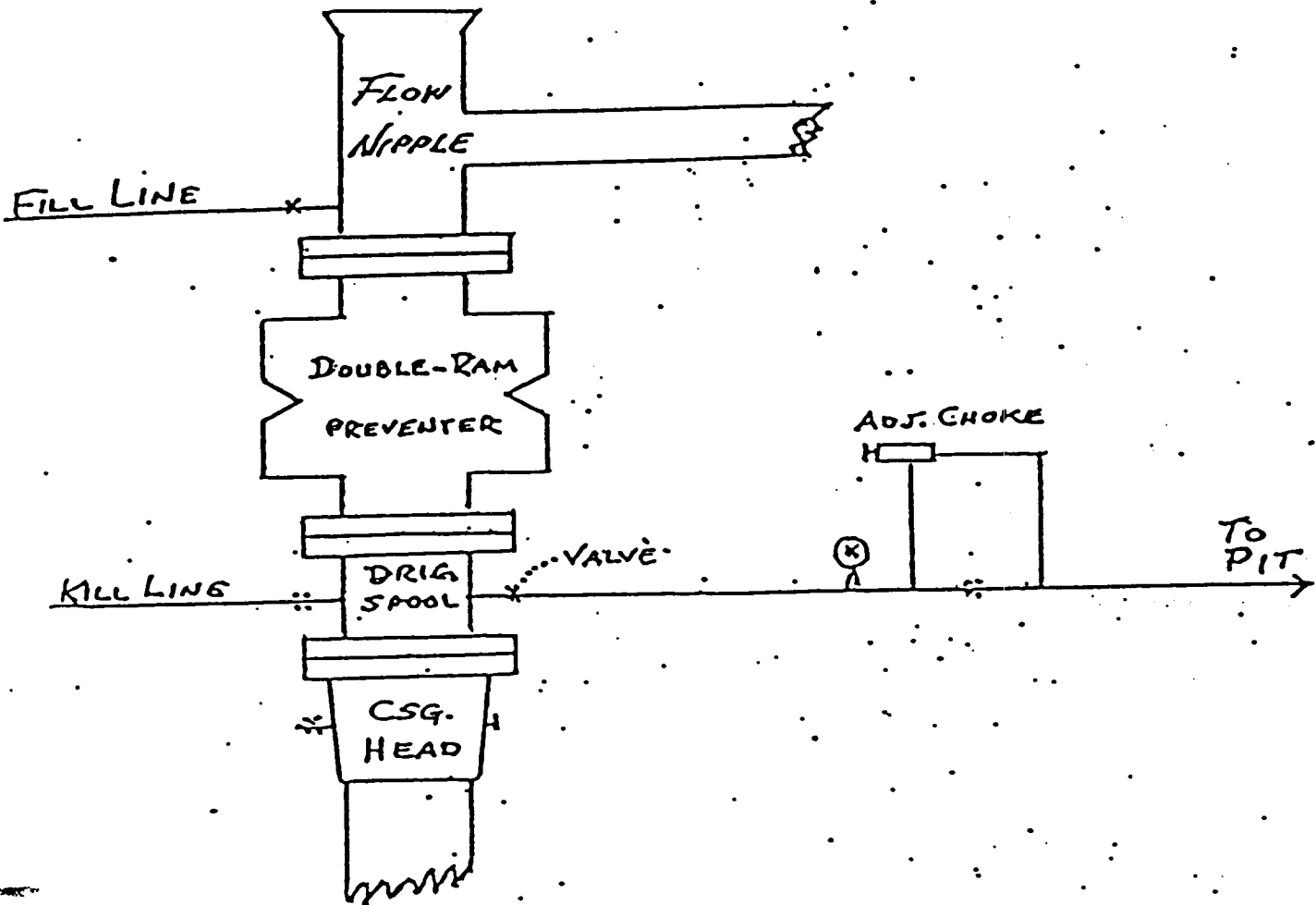
John W. West
Certificate No.

676

0 200 400 600 800 1000 1200 1400 1600 1800 2000 2200 2400 2600 2800 3000

B O P & CHOKE MANIFOLD

SERIES 900



STEVENS OPERATING CORPORATION
HELEN COLLINS FEDERAL #5
1780 FNL 1980 FEL Sec. 9, T-7-S R-26-E
CHAVES COUNTY, NEW MEXICO

SDD EXHIBIT "A"

SUPPLEMENTAL DRILLING DATA

STEVENS OPERATING CORPORATION
Well #5 HELEN COLLINS FEDERAL
1780 FNL 1980 FEL, Sec.9, T-7-S R-26-E
CHAVES COUNTY, NEW MEXICO

1. SURFACE FORMATION: Alluvium

2. ESTIMATED TOPS OF GEOLOGIC MARKERS:

San Andres	584'	P-1	1039'
Glorietta	1670'	Yeso	3089'
Abo	3751'	TD	4400'

3. ANTICIPATED POROSITY ZONES:

Water	150' - 200'
Oil	1000' - 1670'
Gas	3750' - 4400'

4. CASING DESIGN:

<u>Size</u>	<u>Interval</u>	<u>Weight</u>	<u>Grade</u>	<u>Joint</u>	<u>Condition</u>
8 5/8"	0 - 750'	24.0#	K-55	STC	New
4 1/2"	0 - 4400'	10.5#	K-55	STC	New

5. SURFACE CONTROL EQUIPMENT: A double Ram-type preventer. (900 Series) A Sketch of BOP stack is attached.

6. CIRCULATING MEDIUM:

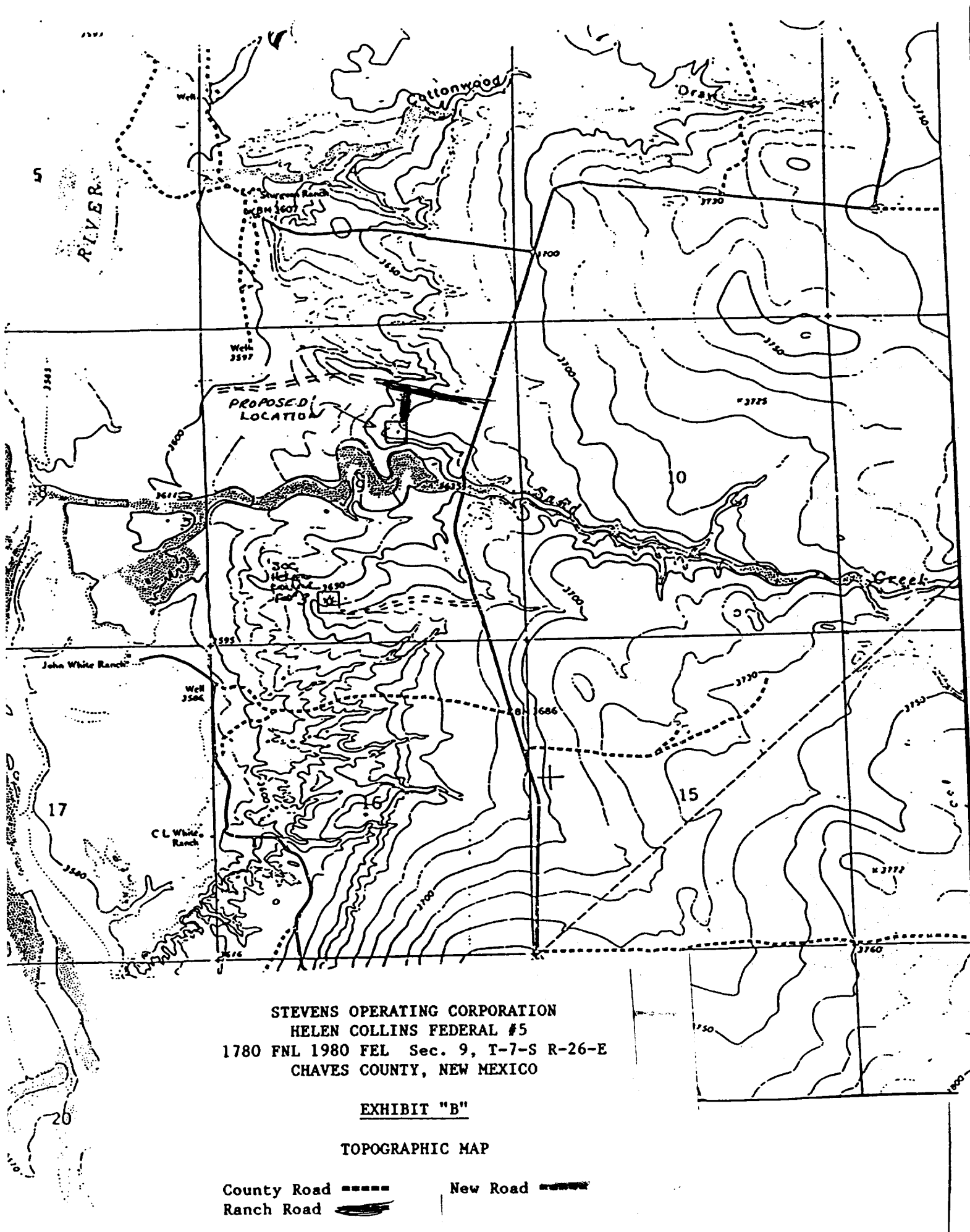
0 - 750	Fresh water mud with gel added if needed.
750 - 4400	Salt water mud, conditioned as necessary for control of viscosity and water loss.

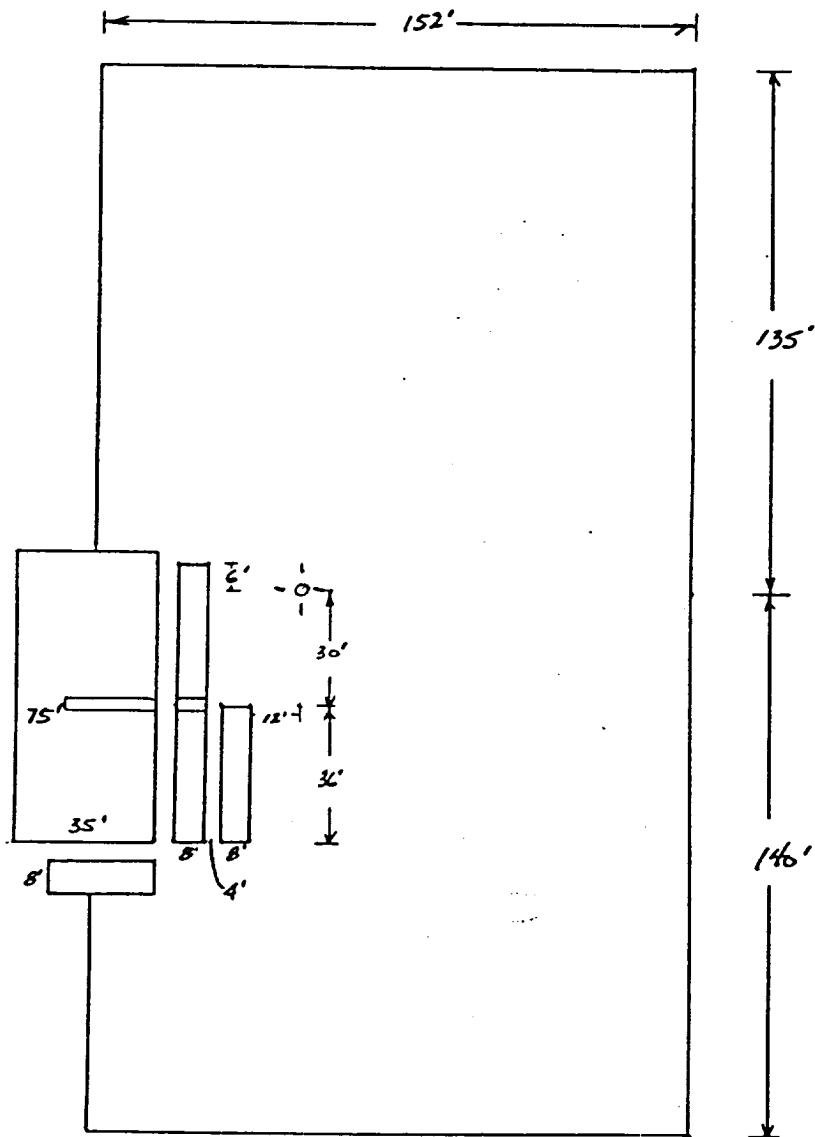
7. AUXILIARY EQUIPMENT: Drill string safety valve.

8. TESTING, LOGGING AND CORING PROGRAMS: Coring & testing may be performed in zones of interest. Compensated Neutron-Formation Density w/Gamma Ray Log. 0 - T.D.. Dual Laterlog Shoe to T.D.

9. ABNORMAL PRESSURES, TEMPERATURES OR GASES: None anticipated.

10. ANTICIPATED DATES: It is planned that drilling operations will commence about December 29, 1983. Duration of drilling and completion operations should be 20 to 60 days.





STEVENS OPERATING CORPORATION
 HELEN COLLINS FEDERAL #5
 1780 FNL 1980 FEL Sec. 9, T-7-S R-26-E
 CHAVES COUNTY, NEW MEXICO

EXHIBIT "D"

SKETCH OF WELL PAD

HORIZON RIG #1
 WELL PAD LAYOUT