

UNITED STATES  
DEPARTMENT OF THE INTERIOR  
GEOLOGICAL SURVEYRECEIVED BY  
DEC 28 1983

## APPLICATION FOR PERMIT TO DRILL, DEEPEN, OR PLUG BACK

## 1. TYPE OF WORK

DRILL ☒DEEPEN ☐PLUG BACK ☐

## 2. TYPE OF WELL

OIL ☒GAS ☐OTHER ☐

ARTESIA, OFFICE

SINGLE ☒MULTIPLE ☐

## 3. NAME OF OPERATOR

CARL A. SCHELLINGER

## 4. ADDRESS OF OPERATOR

P.O. Box 447

Roswell, New Mexico 88201

## 5. LOCATION OF WELL (Report location clearly and in accordance with any State requirements.)

At surface

1980' FSL

660' FEL

Sec. 33

At proposed prod. zone

Same

## 6. DISTANCE IN MILES AND DIRECTION FROM NEAREST TOWN OR POST OFFICE\*

11 Miles Southeast of Roswell, New Mexico

## 7. DISTANCE FROM PROPOSED\*

LOCATION TO NEAREST

PROPERTY OR LEASE LINE, FT.

Also to nearest drg. unit line, if any.

660'

## 8. DISTANCE FROM PROPOSED LOCATION\*

TO NEAREST WELL, DRILLING, COMPLETED,

OR APPLIED FOR, ON THIS LEASE, FT.

None

## 9. ELEVATIONS (Show whether DE, RT, GR, etc.)

3472' G.L.

## 10. PROPOSED CASING AND CEMENTING PROGRAM

## SIZE OF HOLE

## SIZE OF CASING

## WEIGHT PER FOOT

## SETTING DEPTH

## QUANTITY OF CEMENT

12-1/4"

8-5/8"

24.0#

J-55

160'

75 sx Circulated

\* 7-7/8"

4-1/2"

9.0#

H-40

500'±

125 sx Circulated

## 11. LEASE DESIGNATION AND SERIAL NO.

NM 19834

## 12. IF INDIAN, ALLOTTEE OR TRIBE NAME

NA

## 13. UNIT AGREEMENT NAME

NA

## 14. FARM OR LEASE NAME

Cone Federal

## 15. WELL NO.

1

## 16. FIELD AND TOOL, OR WILDCAT

Wildcat - Penrose

## 17. SEC., T., R., M., OR BLK. AND SURVEY OR AREA

Sec. 33-11S-26E

## 18. COUNTY OR PARISH

Chaves

N.M.

## 19. NO. OF ACRES ASSIGNED TO THIS WELL

40

## 20. ROTARY OR CABLE TOOLS

Rotary

## 21. APPROX. DATE WORK WILL START\*

December 30, 1983

## 22. PROPOSED CASING AND CEMENTING PROGRAM

## SIZE OF HOLE

## SIZE OF CASING

## WEIGHT PER FOOT

## SETTING DEPTH

## QUANTITY OF CEMENT

12-1/4"

8-5/8"

24.0#

J-55

160'

75 sx Circulated

\* 7-7/8"

4-1/2"

9.0#

H-40

500'±

125 sx Circulated

Application to Drill, filed December 13, is amended as follows:

Drill to about 160' and set 8-5/8" casing, cemented to surface. Drill to about 500' to test Penrose sand.

\*If commercial production is indicated, 4-1/2" casing will be set at the top of the Penrose sand as a water protection string, with cement circulated to the surface. Complete open-hole by running tubing and testing on pump.

If the well does not appear to be commercial, it will be immediately plugged in conformance with Federal and State regulations.

Operations will be conducted according to the previously-filed Surface Use Plan.

IN ABOVE SPACE DESCRIBE PROPOSED PROGRAM. If proposal is to deepen or plug back, give data on present productive zone and proposed new productive zone. If proposal is to drill or deepen directly into, give pertinent data on subsurface locations and measured and true vertical depths. Give blowout prevention program, if any.

23.

SIGNED

JERRY W. LONG

TITLE

Agent

DATE

December 23, 1983

(This space for Federal or State office use)

PERMIT NO.

S/Richard Bastin

APPROVAL DATE

Associate District Manager

DATE

DEC 27 1983

APPROVED BY

APPROVAL SUBJECT TO  
GENERAL REQUIREMENTS AND  
SPECIAL STIPULATIONS  
ATTACHEDNoted A.P.  
ID-1 & 2/L Brook  
12-30-83

NM OIL CO COMMISSION  
Drawer DD  
Artesia, NM 88210SUBMIT IN TRI-CATE®  
(Other instructions on  
reverse side)Form approved.  
Budget Bureau No. 42-R1425.UNITED STATES  
DEPARTMENT OF THE INTERIOR  
GEOLOGICAL SURVEY

## APPLICATION FOR PERMIT TO DRILL, DEEPEN, OR PLUG BACK

## 1a. TYPE OF WORK

DRILL ☒DEEPEN ☐PLUG BACK ☐

## b. TYPE OF WELL

OIL  
WELL ☒GAS  
WELL ☐

OTHER

## 2. NAME OF OPERATOR

CARL A. SCHELLINGER

## 3. ADDRESS OF OPERATOR

P. O. Box 447  
Roswell, New Mexico 88201

## 4. LOCATION OF WELL (Report location clearly and in accordance with any State requirements.)

At surface

1980' FSL 660' FEL

At proposed prod. zone

Same

## 14. DISTANCE IN MILES AND DIRECTION FROM NEAREST TOWN OR POST OFFICE\*

11 miles southeast of Roswell, New Mexico

## 15. DISTANCE FROM PROPOSED\*

LOCATION TO NEAREST  
PROPERTY OR LEASE LINE, FT.  
(Also to nearest drlg. unit line, if any)

660'

18. DISTANCE FROM PROPOSED LOCATION\*  
TO NEAREST WELL, DRILLING, COMPLETED,  
OR APPLIED FOR, ON THIS LEASE, FT.

None

## 16. NO. OF ACRES IN LEASE

747.92

## 19. PROPOSED DEPTH

500' Penrose

17. NO. OF ACRES ASSIGNED  
TO THIS WELL

40

## 20. ROTARY OR CABLE TOOLS

Rotary

## 21. ELEVATIONS (Show whether DF, RT, GR, etc.)

3472' G.L.

## 22. APPROX. DATE WORK WILL START\*

December 29, 1983

## PROPOSED CASING AND CEMENTING PROGRAM

SIZE OF HOLE	SIZE OF CASING	WEIGHT PER FOOT	SETTING DEPTH	QUANTITY OF CEMENT
12-1/4"	8-5/8"	24.0# J-55	161'	75 sx Circulated
7-7/8"	4-1/2"	9.5# K-55	500'	150 sx Circulated

Propose to drill to about 500' to test Penrose sand.

Drill to 161' and set 8-5/8" surface casing, cemented to surface.  
Drill with air to about 500'. If commercial shows are encountered,  
will set 4-1/2" production casing, cemented to surface.

Complete by perforating productive zone, run tubing and stimulate.  
Install rods and pumping equipment and test to tank.

Drilling will be conducted over the December 31 expiration date  
to qualify the lease for a 2 year extension pursuant to 43 CFR,  
Subpart 3107.2-3.

IN ABOVE SPACE DESCRIBE PROPOSED PROGRAM. If proposal is to deepen or plug back, give data on present productive zone and proposed new productive zone. If proposal is to drill or deepen directionally, give pertinent data on subsurface locations and measured and true vertical depths. Give blowout preventer program, if any.

24.

SIGNED

JERRY W. LONG

TITLE

Agent

DATE

December 13, 1983

(This space for Federal or State office use)

PERMIT NO.

APPROVAL DATE

APPROVED BY

TITLE

DATE

CONDITIONS OF APPROVAL, IF ANY:

## OIL CONSERVATION DIVISION

STATE OF NEW MEXICO  
ENERGY AND MINERALS DEPARTMENTP. O. BOX 2084  
SANTA FE, NEW MEXICO 87501Form C-102  
Revised 10-1-81

All distances must be from the outer boundaries of the Section.

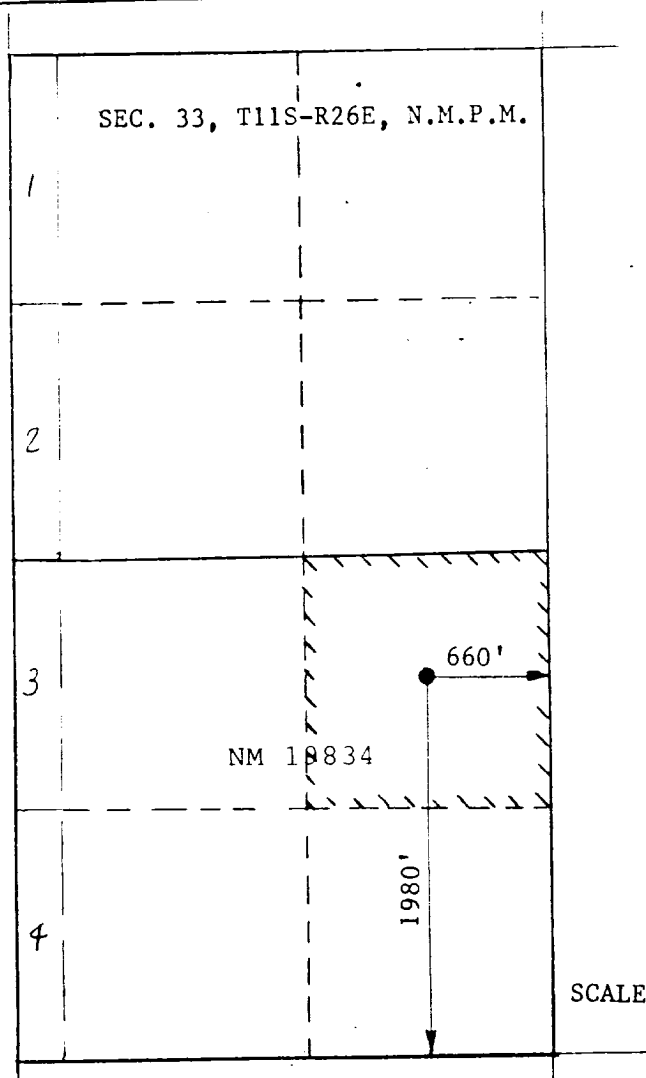
Operator <b>CARL A. SCHELLINGER</b>			Lease <b>CONE FEDERAL</b>		Well No. <b>#1</b>
Well Letter <b>I</b>	Section <b>33</b>	Township <b>11S</b>	Range <b>26E</b>	County <b>CHAVES</b>	
Actual Wellbore Location of Well:					
1980 feet from the SOUTH		line and 660 feet from the EAST		line	
Ground Level Elev. <b>3472</b>	Producing Formation <b>Penrose</b>		Pool <b>Wildcat</b>		Dedicated Acreage <b>40</b> Acre

1. Outline the acreage dedicated to the subject well by colored pencil or hatchure marks on the plat below.
2. If more than one lease is dedicated to the well, outline each and identify the ownership thereof (both as to working interest and royalty). SINGLE LEASE
3. If more than one lease of different ownership is dedicated to the well, have the interests of all owners been consolidated by communitization, unitization, force-pooling, etc?

☐ Yes ☐ No If answer is "yes," type of consolidation \_\_\_\_\_

If answer is "no," list the owners and tract descriptions which have actually been consolidated. (Use reverse side of this form if necessary.) \_\_\_\_\_

No allowable will be assigned to the well until all interests have been consolidated (by communitization, unitization, force-pooling, or otherwise) or until a non-standard unit, eliminating such interests, has been approved by the Division



## CERTIFICATION

I hereby certify that the information contained herein is true and complete to the best of my knowledge and belief.

*Jerry W. Long*  
Name  
JERRY W. LONG

Position  
Agent

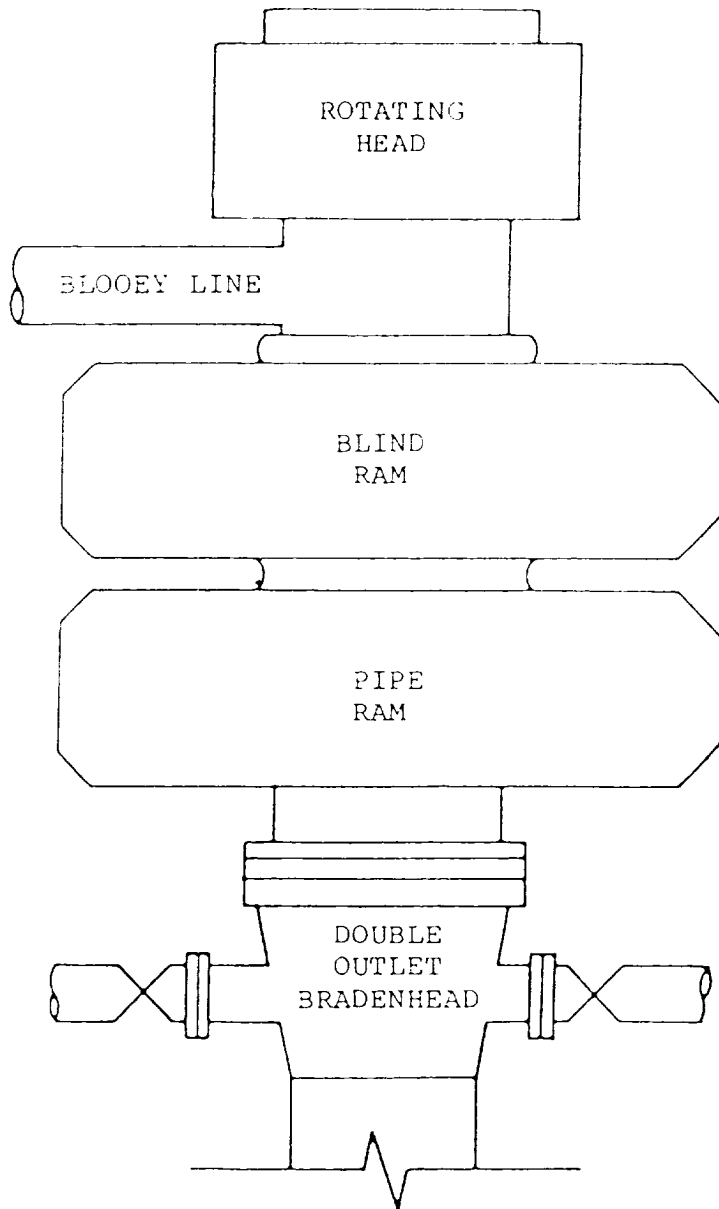
Company  
CARL A. SCHELLINGER

Date  
December 13, 1983

I hereby certify that the well location shown on this plat was plotted from field notes of actual surveys made by me or under my supervision, and that the same is true and correct to the best of my knowledge and belief.

*John D. Jaquess*  
JOHN D. JAQUESS  
Date Surveyed  
12-9-83  
Registered Professional Engineer  
and/or Surveyor  
John D. Jaquess, P.E. & L.S.  
Certificate No. 6290

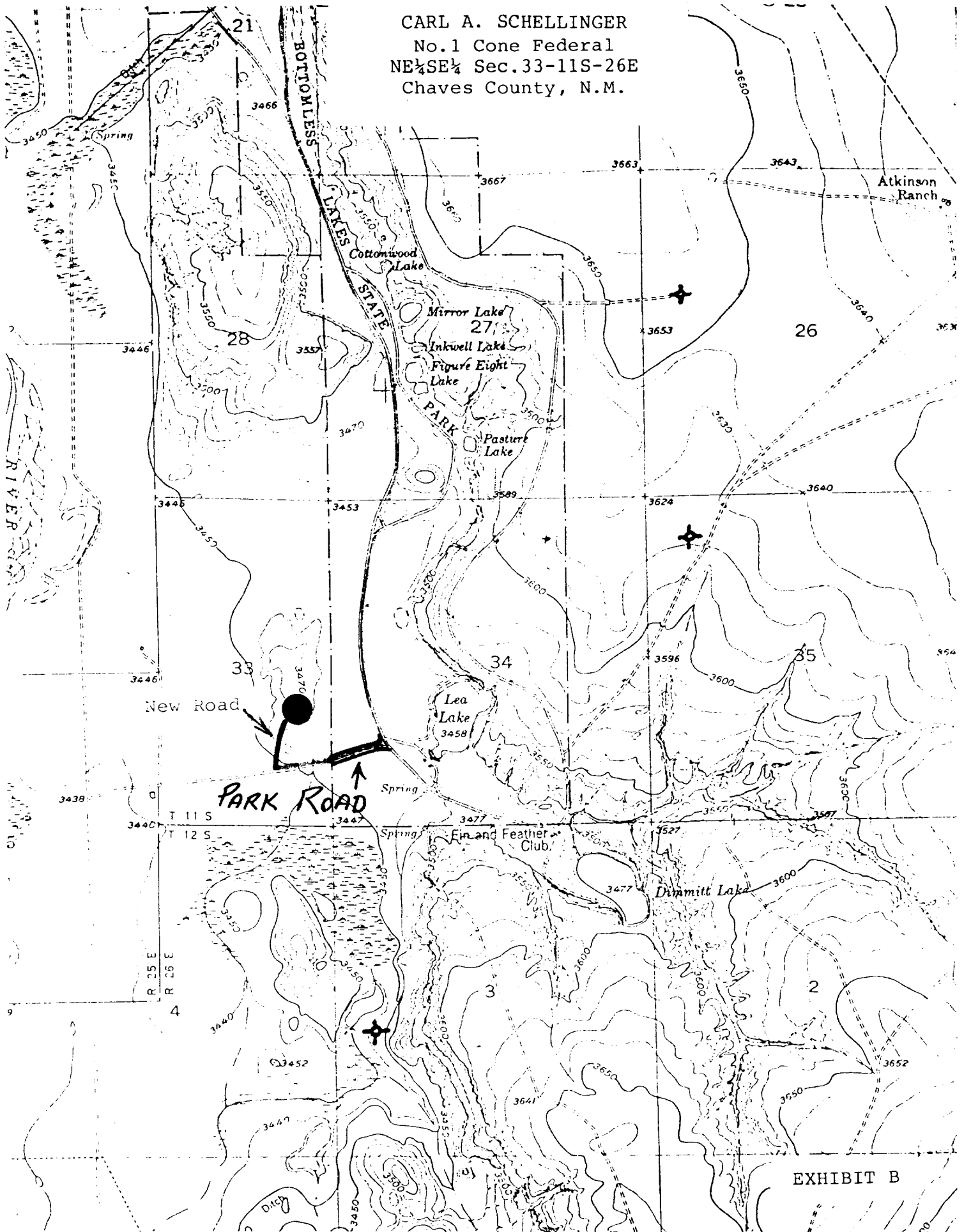
CARL A. SCHELLINGER  
No.1 Cone Federal  
SE¼SE¼ Sec.34-11S-26E  
Chaves County, N.M.



BOP STACK

3000 PSI WORKING PRESSURE

CARL A. SCHELLINGER  
No.1 Cone Federal  
NE $\frac{1}{4}$ SE $\frac{1}{4}$  Sec.33-11S-26E  
Chaves County, N.M.



## N

