

**N MEXICO OIL CONSERVATION COMMISSION
WELL LOCATION AND ACREAGE DEDICATION PLAT**

All distances must be from the outer boundaries of the Section

RECEIVED		Form C-10 Superseded C-128 Effective 1-1-65
JAN 10 1984		
Well No.	O. C. D. 1	
ARTESIA, OFFICE		

Operator SUN EXPLORATION & PROD. CO.		Lease STATE -CHINA DRAW <i>St.</i>	
Unit Letter J	Section 36	Township 6S	Range 22E
		County CHAVES	

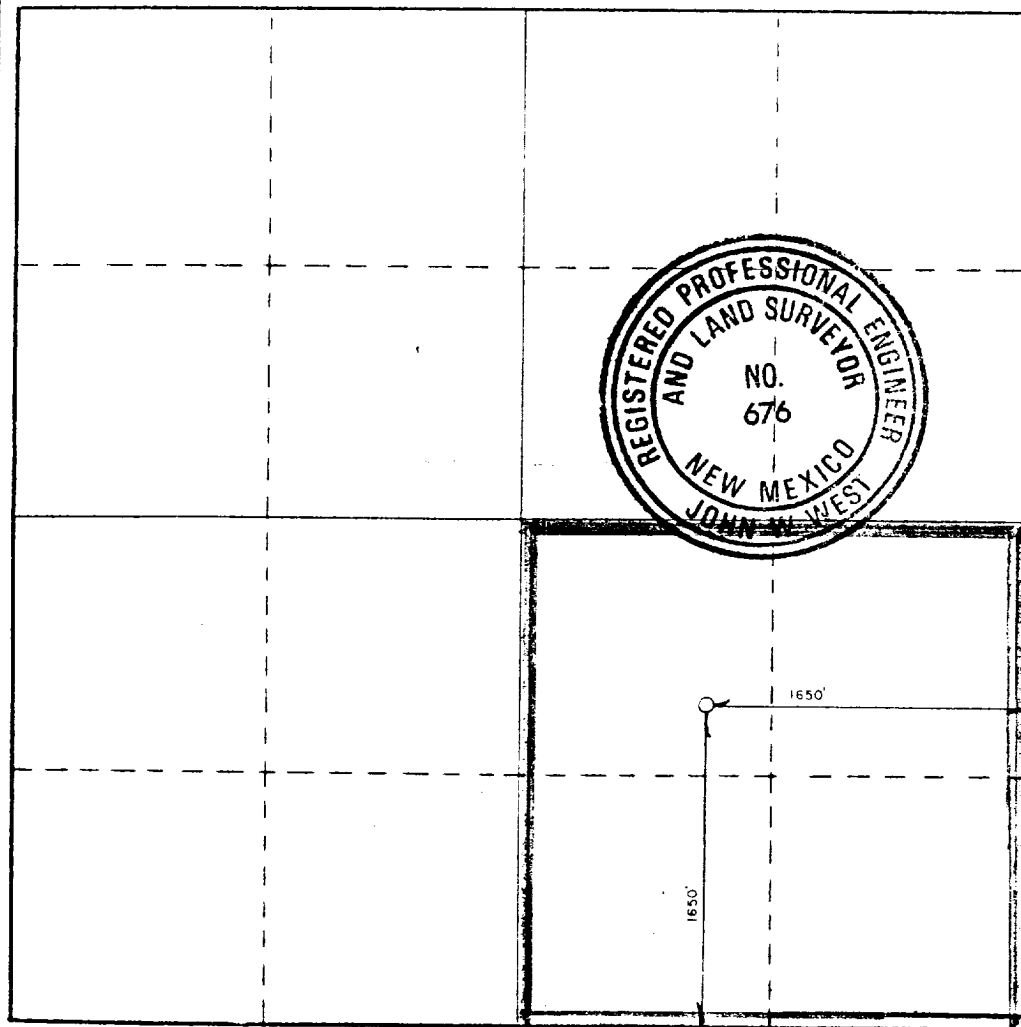
Actual Footage Location of Well:			
1650	feet from the SOUTH	line and	1650 feet from the EAST line
Ground Level Elev. 4177.6	Producing Formation Abo	Pool Wildcat/Abo <i>W. Perm. Abo</i>	Dedicated Acreage: 160 Acres

1. Outline the acreage dedicated to the subject well by colored pencil or hatchure marks on the plat below.
2. If more than one lease is dedicated to the well, outline each and identify the ownership thereof (both as to working interest and royalty).
3. If more than one lease of different ownership is dedicated to the well, have the interests of all owners been consolidated by communitization, unitization, force-pooling, etc?

☐ Yes ☐ No If answer is "yes," type of consolidation _____

If answer is "no," list the owners and tract descriptions which have actually been consolidated. (Use reverse side of this form if necessary.) _____

No allowable will be assigned to the well until all interests have been consolidated (by communitization, unitization, forced-pooling, or otherwise) or until a non-standard unit, eliminating such interests, has been approved by the Commission.



CERTIFICATION

I hereby certify that the information contained herein is true and complete to the best of my knowledge and belief.

Dee Ann Kemp

Name
Dee Ann Kemp

Position
Sr. Acctg. Assist.

Company
Sun Exploration & Production Co

Date
January 5, 1984

I hereby certify that the well location shown on this plat was plotted from field notes of actual surveys made by me or under my supervision, and that the same is true and correct to the best of my knowledge and belief.

Date Surveyed

12/13/83

Registered Professional Engineer and/or Land Surveyor

John W. West

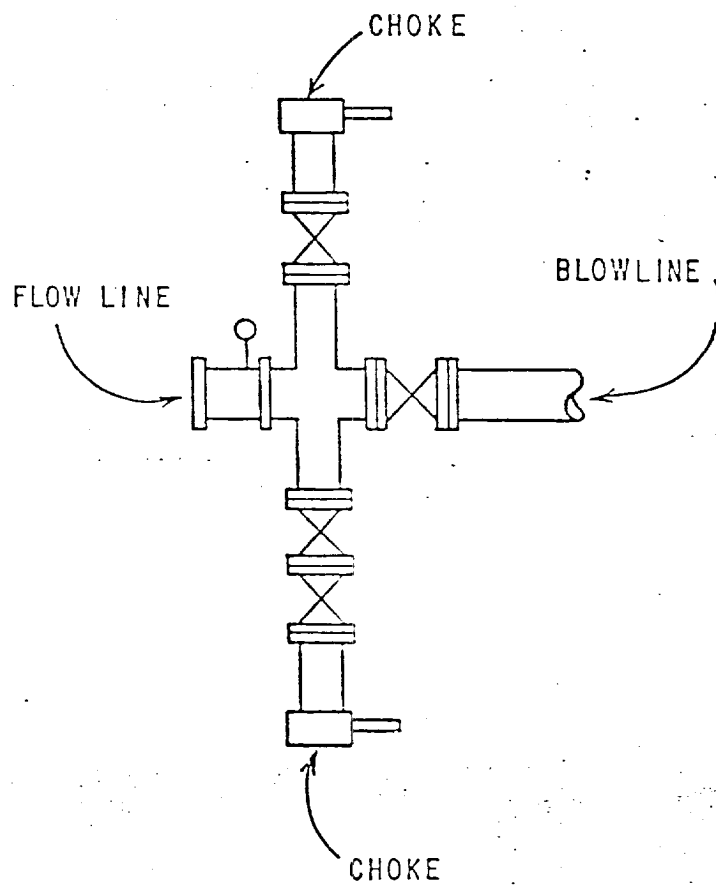
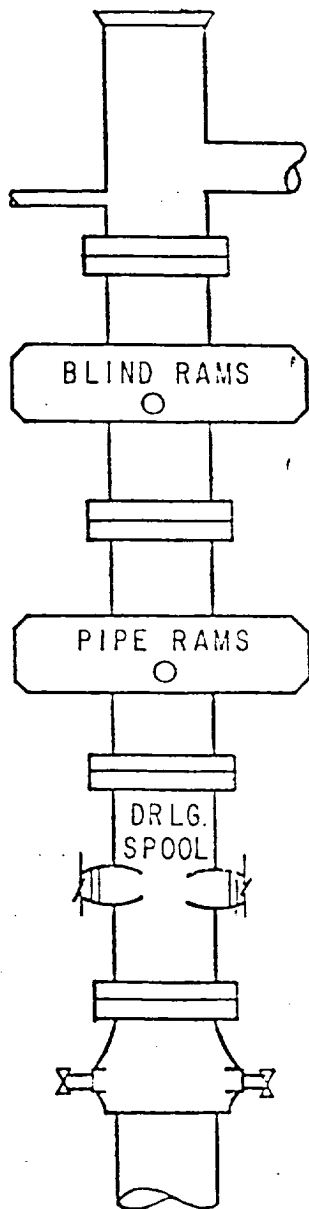
Certificate No
676

RECEIVED

JAN 9 1984

O.C.D.
HOBBS OFFICE

BLOWOUT - PREVENTER ASSEMBLY



RECEIVED

JAN 9 1984

O.C.D.
HOBBS OFFICE