

UNITED STATES
DEPARTMENT OF THE INTERIOR
GEOLOGICAL SURVEY

APPLICATION FOR PERMIT TO DRILL, DEEPEN, OR PLUG BACK

1a. TYPE OF WORK

DRILL ☒DEEPEN ☐PLUG BACK ☐

b. TYPE OF WELL

OIL
WELL ☐GAS
WELL ☒

OTHER

SINGLE ZONE ☐MULTIPLE
ZONE ☐

2. NAME OF OPERATOR

McClellan Oil Corporation

3. ADDRESS OF OPERATOR

P.O. Drawer 730, Roswell, NM 88202

4. LOCATION OF WELL (Report location clearly and in accordance with any State requirements.)

At surface

1980' FSL & 660' FWL

At proposed prod. zone

14. DISTANCE IN MILES AND DIRECTION FROM NEAREST TOWN OR POST OFFICE*

14 miles Northeast of Roswell, NM

15. DISTANCE FROM PROPOSED*

LOCATION TO NEAREST
PROPERTY OR LEASE LINE, FT.
(Also to nearest drlg. unit line, if any)

660'

16. NO. OF ACRES IN LEASE

720

17. NO. OF ACRES ASSIGNED
TO THIS WELL

160

18. DISTANCE FROM PROPOSED LOCATION*
TO NEAREST WELL, DRILLING, COMPLETED,
OR APPLIED FOR, ON THIS LEASE, FT.

467'

19. PROPOSED DEPTH

4560'

20. ROTARY OR CABLE TOOLS

Rotary

21. ELEVATIONS (Show whether DF, RT, GR, etc.)

3703' G.L.

22. APPROX. DATE WORK WILL START*

Feb. 15, 1984

23.

PROPOSED CASING AND CEMENTING PROGRAM

SIZE OF HOLE	SIZE OF CASING	WEIGHT PER FOOT	SETTING DEPTH	QUANTITY OF CEMENT
12-1/4"	8-5/8"	24	900'	500 sx (Circ.)
7-7/8"	4-1/2"	10.5	4560'	350 sx

Will drill to approximately 4560' to test the Abo formation. If production is indicated, will run casing and attempt completion.

Estimated Geologic Tops: San Andres: 650' Tubb: 3270'
Glorieta: 1780' Abo: 4020'

Mud program: Will use native mud to top of Abo. Mud up with salt base gel having a 15 cc water loss, and 10 lb/gal mud weight.

Gas is not dedicated.

Post APG
18-10-13 Book
1-3-84

IN ABOVE SPACE DESCRIBE PROPOSED PROGRAM: If proposal is to deepen or plug back, give data on present productive zone and proposed new productive zone. If proposal is to drill or deepen directionally, give pertinent data on subsurface locations and measured and true vertical depths. Give blowout preventer program, if any.

24.

SIGNED

Mark McClellan

TITLE

Geologist

DATE

Jan. 6, 1984

(This space for Federal or State office use)

PERMIT NO.

APPROVAL DATE

'Orig. Sgd.' Earl R. Cunningham

District Manager

APPROVED BY

TITLE

DATE

JAN 30 1984

CONDITIONS OF APPROVAL, IF ANY:

*See Instructions On Reverse Side

APPROVAL SUBJECT TO
GENERAL REQUIREMENTS AND
SPECIAL STIPULATIONS
ATTACHED

All distances must be from the outer boundaries of the Section.

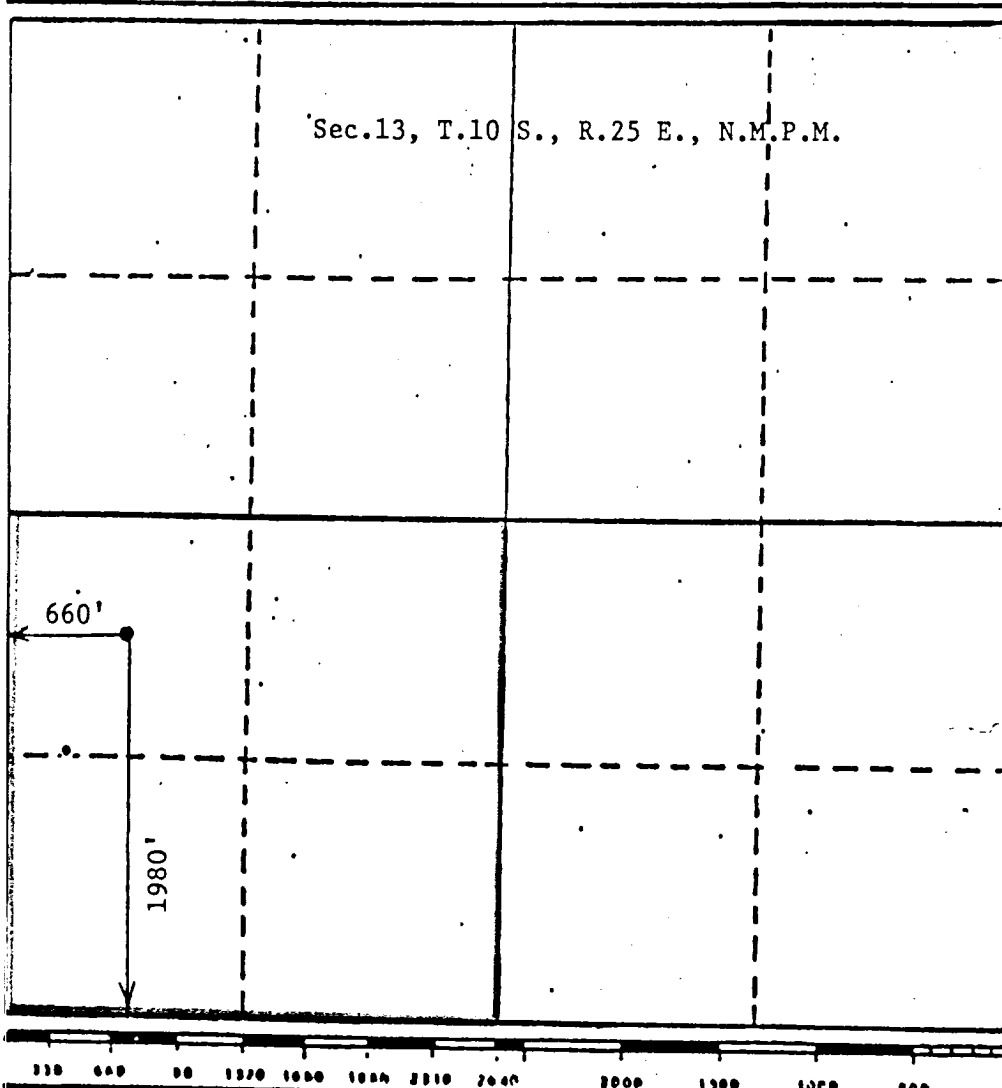
Operator McClellan Oil Corp.		Lease Lisa Federal		Well No. 1
Unit Letter L	Section 13	Township 10 South	Range 25 East	County Chaves
Actual Postage Location of Well				
660	feet from the	West	line and	1980
				feet from the
				South
				line
Ground Level Elev. 3703	Producing Formation Abo		Pool South Pecos Slope <i>Abo</i>	Dedicated Acreage 160
				Acres

1. Outline the acreage dedicated to the subject well by colored pencil or hatchure marks on the plat below.
2. If more than one lease is dedicated to the well, outline each and identify the ownership thereof (both as to working interest and royalty).
3. If more than one lease of different ownership is dedicated to the well, have the interests of all owners been consolidated by communitization, unitization, force-pooling, etc?

☐ Yes ☐ No If answer is "yes," type of consolidation _____

If answer is "no," list the owners and tract descriptions which have actually been consolidated. (Use reverse side of this form if necessary.) _____

No allowable will be assigned to the well until all interests have been consolidated (by communitization, unitization, forced-pooling, or otherwise) or until a non-standard unit, eliminating such interests, has been approved by the Division



CERTIFICATION

I hereby certify that the information contained herein is true and complete to the best of my knowledge and belief.

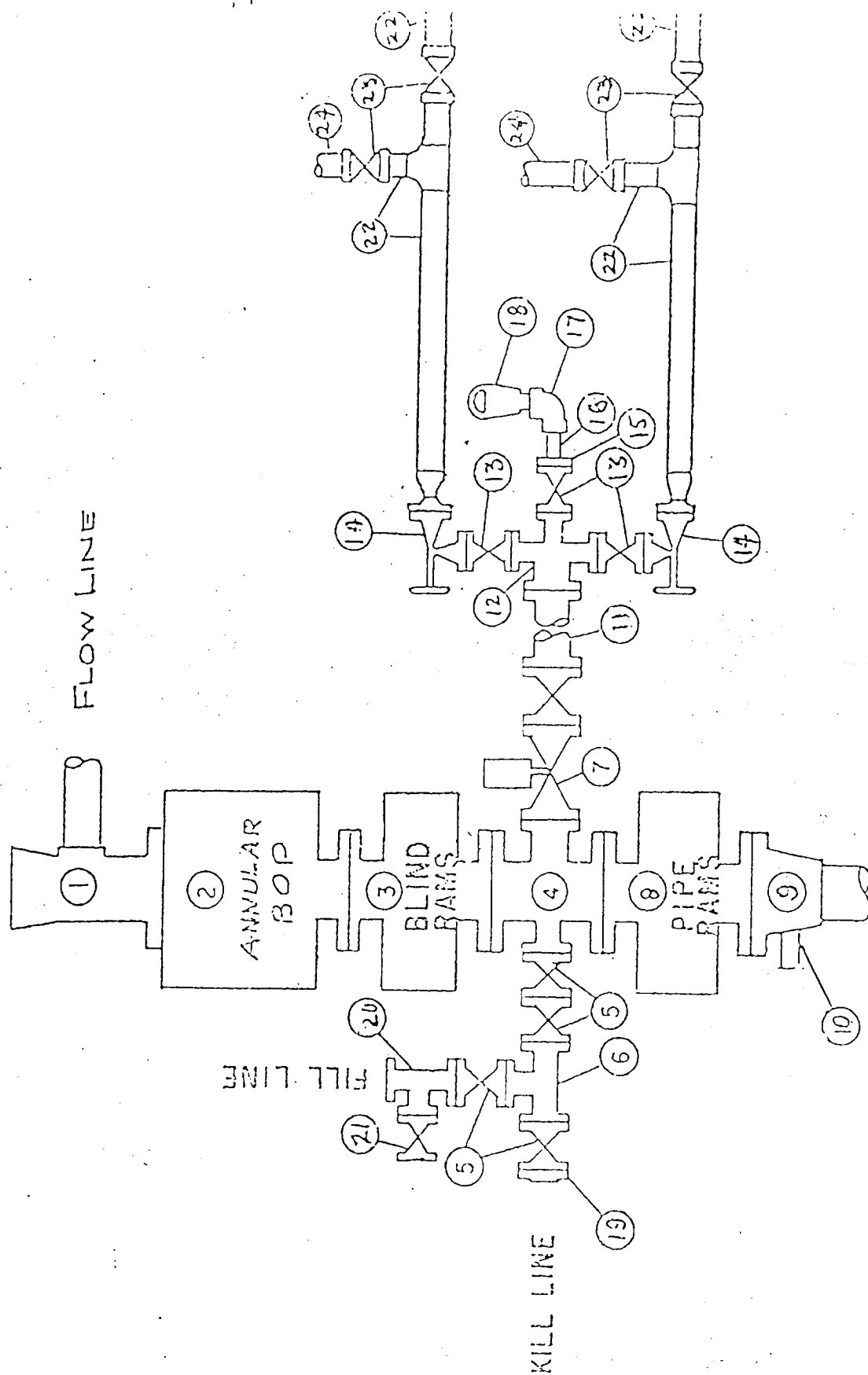
Mark McClellan

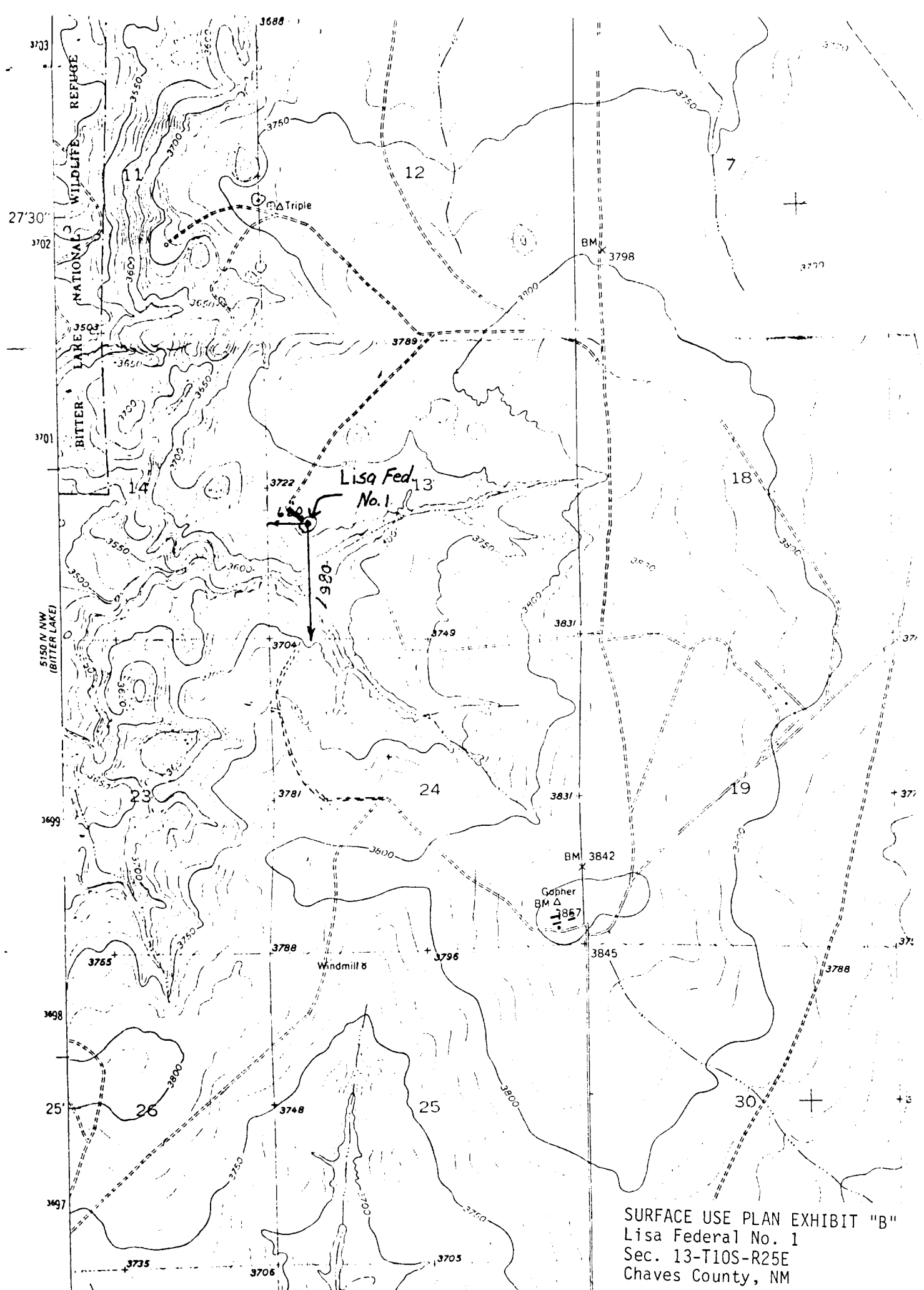
Name
Mark McClellan
Position
Geologist
Company
McClellan Oil Corporation
Date
January 4, 1984

I hereby certify that the well location shown on this plat was plotted from field notes of actual surveys made by me or under my supervision, and that the same is true and correct to the best of my knowledge and belief.

Date Surveyed
January 1984
Registered Professional Engineer and/or Land Surveyor
John D. Jaques
John D. Jaques, P.E. & L.S.
Certificate No.
6290

BLOWOUT PREVENTER SPECIFICATION



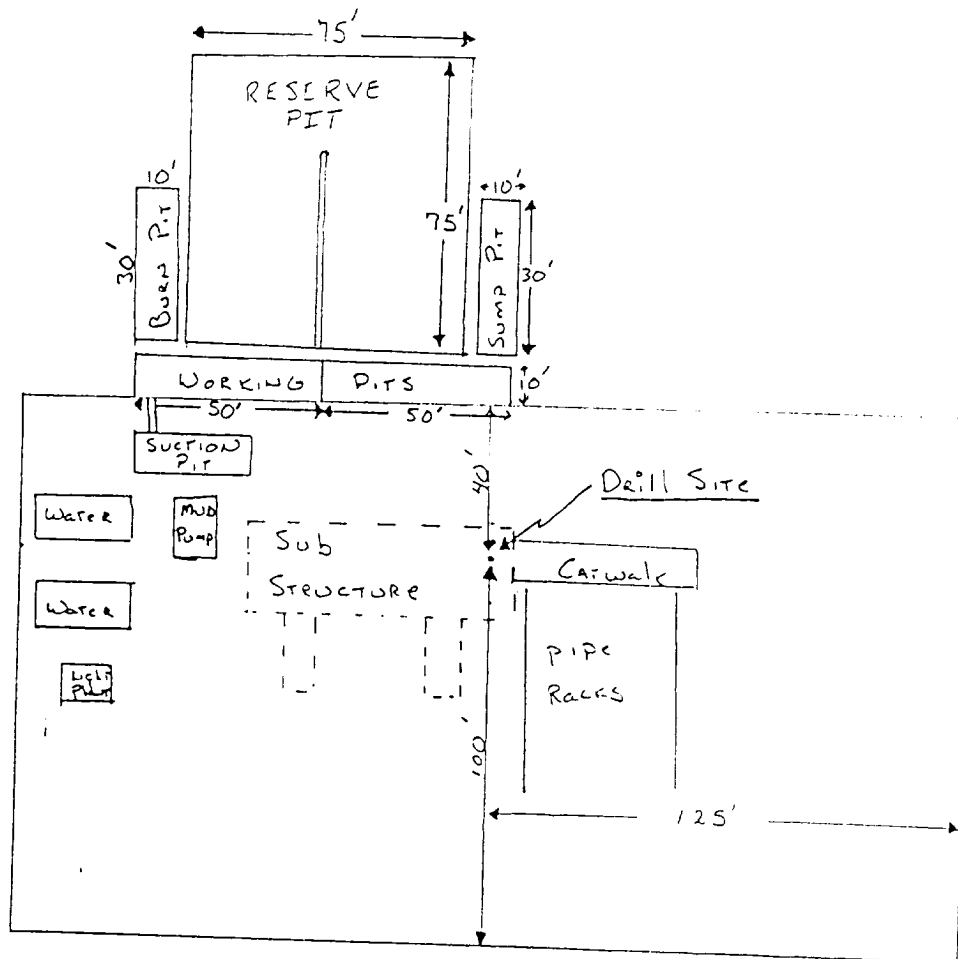


McCLELLAN OIL CORPORATION
SUGGESTED PAD DIMENSIONS

Reserve Pits 4 ft. deep, plastic lined

Working pits 5 ft. deep

No cellar



Scale 1" = 50'