

P. O. BOX 2088

SANTA FE, NEW MEXICO 87501

NO. OF COPIES RECEIVED	
DISTRIBUTION	
SANTA FE	✓
FILE	✓
U.S.G.S.	✓
LAND OFFICE	✓
OPERATOR	✓

RECEIVED BY

FEB 14 1984

O.C.D.

ARTESIA, OFFICE

5A. Indicate Type of Lease

STATE ☒ FEE ☐

5. State Oil &amp; Gas Lease No.

LG-4352

## APPLICATION FOR PERMIT TO DRILL, DEEPEN, OR PLUG BACK

1a. Type of Work

DRILL ☒DEEPEN ☐PLUG BACK ☐

b. Type of Well

OIL WELL ☐GAS WELL ☒

OTHER

SINGLE ZONE ☐MULTIPLE ZONE ☐

2. Name of Operator

Yates Petroleum Corporation

3. Address of Operator

207 S. 4th, Artesia, New Mexico 88210

4. Location of Well

UNIT LETTER N LOCATED 660 FEET FROM THE South LINEAND 1980 FEET FROM THE West LINE OF SEC. 36 TWP. 7S RGE. 24E NMPM

7. Unit Agreement Name

8. Farm or Lease Name

Snakeweed "SD" St.

9. Well No.

2

10. Field and Pool, or Wildcat

Under Abo

11. County

Chaves

19. Proposed Depth

appr. 4050'

19A. Formation

Abo

19. Rotary or C.T.

Rotary

21. Elevations (show whether DE, RI, etc.)

3753.1' GL

21A. Kind &amp; Status Plug. Bond

Blanket

21B. Drilling Contractor

L&amp;M Drilling #2

22. Approx. Date Work will start

ASAP

23.

## PROPOSED CASING AND CEMENT PROGRAM

SIZE OF HOLE	SIZE OF CASING	WEIGHT PER FOOT	SETTING DEPTH	SACKS OF CEMENT	EST. TOP
14 3/4"	10 3/4"	40.5# J-55	1050'	950 sx	circ
7 7/8"	4 1/2"	9.5#	TD	350 sx	

We propose to drill and test the Abo and intermediate formations. About 1050' of surface casing will be set and cement circulated. If needed (lost circulation) 8 5/8" intermediate casing will be set at 1500' and cemented with enough cement calculated to tie back into the surface casing. If commercial, production casing will be run and cemented with adequate cover, perforated and stimulated as needed for production.

MUD PROGRAM: FW gel/LCM to 1500', Brine to 3200', Starch/driskpak to TD.

BOP PROGRAM: BOP's will be installed at the offset and tested daily.

GAS NOT DEDICATED.

APPROVED FOR 180 DAYS  
8-16-84  
UNDERWAY

IN ABOVE SPACE DESCRIBE PROPOSED PROGRAM; IF PROPOSAL IS TO DEEPEN OR PLUG BACK, GIVE DATA ON PRESENT PRODUCTIVE ZONE AND PROPOSED NEW PRODUCTIVE ZONE. GIVE BLOWOUT PREVENTER PROGRAM, IF ANY.

hereby certify that the information above is true and complete to the best of my knowledge and belief.

Signed Gustavo Kerk Title Regulatory Agent Date 2/10/84

(This space for State Use)

APPROVED BY T. M. Walker TITLE OIL AND GAS INSPECTOR

DATE FEB 16 1984

CONDITIONS OF APPROVAL, IF ANY:

she 10 3/4 casing

Post. Abo  
SD-102, Book  
2-17-84

NEW MEXICO OIL CONSERVATION COMMISSION  
WELL LOCATION AND ACREAGE DEDICATION PLAT

Form C-102  
Supersedes C-128  
Effective 1-1-65

All distances must be from the outer boundaries of the Section.

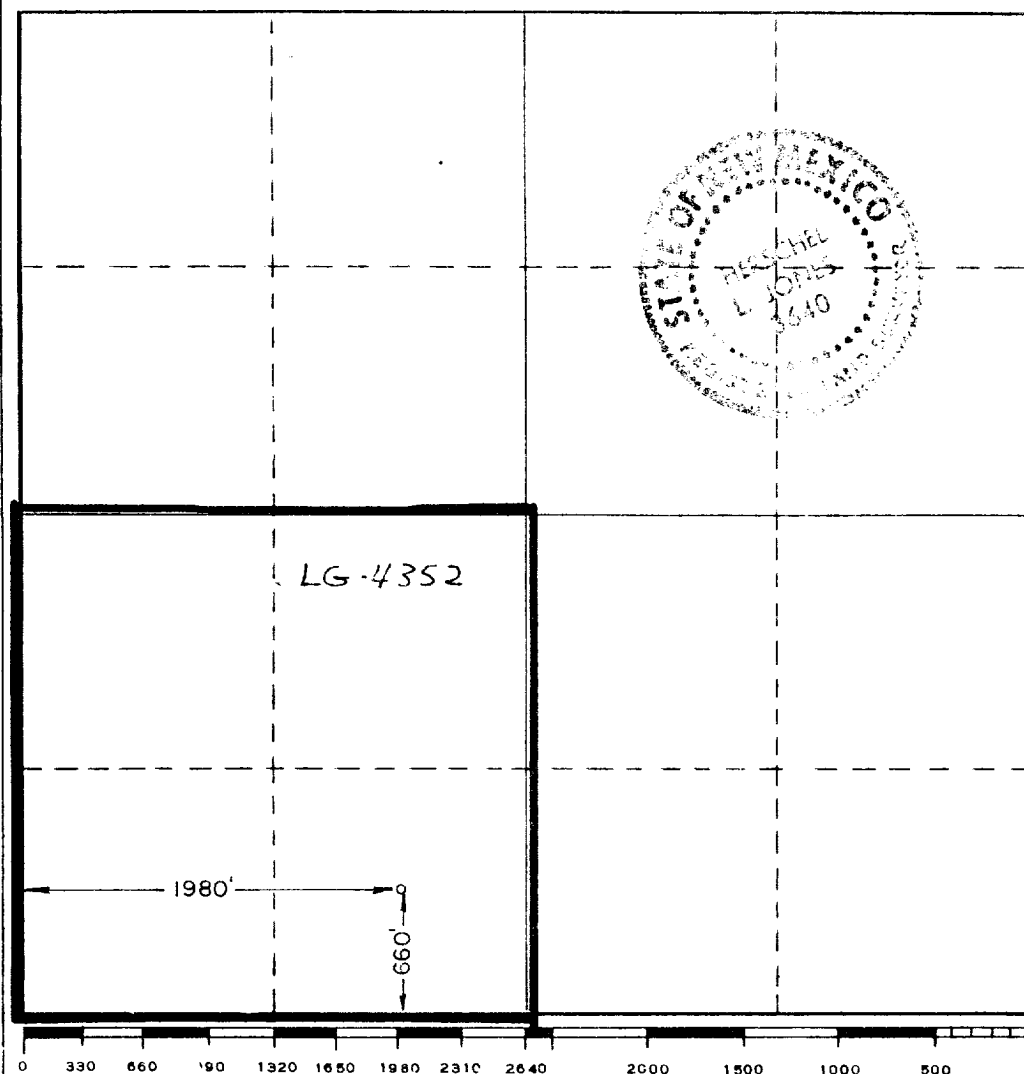
Operator <b>YATES PETROLEUM CORPORATION</b>			Lease <b>SNAKEWEED "SD" STATE</b>		Well No. <b>2</b>
Unit Letter <b>N</b>	Section <b>36</b>	Township <b>7 South</b>	Range <b>24 East</b>	County <b>Chaves</b>	
Actual Footage Location of Well: <b>1980</b> feet from the <b>West</b> line and <b>660</b> feet from the <b>South</b> line					
Ground Level Elev. <b>3753.1</b>	Producing Formation <b>Abo</b>	Pool <del>Undes.</del> <b>Abo</b>		Dedicated Acreage: <b>160</b> Acres	

1. Outline the acreage dedicated to the subject well by colored pencil or hatchure marks on the plat below.
2. If more than one lease is dedicated to the well, outline each and identify the ownership thereof (both as to working interest and royalty).
3. If more than one lease of different ownership is dedicated to the well, have the interests of all owners been consolidated by communitization, unitization, force-pooling, etc?

☐ Yes    ☐ No    If answer is "yes," type of consolidation \_\_\_\_\_

If answer is "no," list the owners and tract descriptions which have actually been consolidated. (Use reverse side of this form if necessary.) \_\_\_\_\_

No allowable will be assigned to the well until all interests have been consolidated (by communitization, unitization, forced-pooling, or otherwise) or until a non-standard unit, eliminating such interests, has been approved by the Commission.



CERTIFICATION

I hereby certify that the information contained herein is true and complete to the best of my knowledge and belief.

*Gliserio Rodriguez*  
Name

**Gliserio Rodriguez**

Position

**Regulatory Agent**

Company

**Yates Petroleum Corp.**

Date

**2/10/84**

I hereby certify that the well location shown on this plat was plotted from field notes of actual surveys made by me or under my supervision, and that the same is true and correct to the best of my knowledge and belief.

Date Surveyed

**2/4/84**

Registered Professional Engineer  
and/or Land Surveyor

*Herschel L. Jones*  
Certificate No.

**3640**

EXHIBIT B

BOP DIAGRAM

