

RECEIVED BY

FEB 24 1984
UNITED STATES
DEPARTMENT OF THE INTERIOR
GEOLOGICAL SURVEY
ARTESIA, OFFICENM OIL CONS. COMMISSION
Drawer 800
Artesia, NM 88210
SUBMIT IN THE VICINITY OF
(Other instructions on reverse side)Form approved.
Budget Bureau No. 42-B1425.

4184

APPLICATION FOR PERMIT TO DRILL, DEEPEN, OR PLUG BACK

1a. TYPE OF WORK

DRILL ☒DEEPEN ☐PLUG BACK ☐

b. TYPE OF WELL

OIL
WELL ☐GAS
WELL ☒

OTHER

2. NAME OF OPERATOR

Yates Petroleum Corporation

3. ADDRESS OF OPERATOR

207 S. 4th, Artesia, New Mexico 88210

4. LOCATION OF WELL (Report location clearly and in accordance with any State requirements.)

At surface

660' FSL and 660' FEL

At proposed prod. zone

same

14. DISTANCE IN MILES AND DIRECTION FROM NEAREST TOWN OR POST OFFICE*

18 miles NNE of Roswell, New Mexico 88201

15. DISTANCE FROM PROPOSED*

LOCATION TO NEAREST
PROPERTY OR LEASE LINE, FT.
(Also to nearest drlg. unit line, if any)

660'

16. NO. OF ACRES IN LEASE

1480

17. NO. OF ACRES ASSIGNED
TO THIS WELL

160

18. DISTANCE FROM PROPOSED LOCATION*
TO NEAREST WELL, DRILLING COMPLETED,
OR APPLIED FOR, ON THIS LEASE, FT.

19. PROPOSED DEPTH

4125'

20. ROTARY OR CABLE TOOLS

Rotary

21. ELEVATIONS (Show whether DF, RT, GR, etc.)

3594.9' GL

22. APPROX. DATE WORK WILL START*

ASAP

23. PROPOSED CASING AND CEMENTING PROGRAM

SIZE OF HOLE	SIZE OF CASING	WEIGHT PER FOOT	SETTING DEPTH	QUANTITY OF CEMENT
14 3/4"	10 3/4"	40.5# J-55	790'	500 sx circulated
7 7/8"	4 1/2"	9.5# J-55	TD	350 sx

We propose to drill and test the Abo and intermeidate formations. Approximately 790' of surface casing will be set and cement circulated to shut off gravel and caving. If needed (lost circulation) 8 5/8" intermediate casing will be run to 1500' and cemented with enough cement calculated to tie back into the surface casing. If commercial, production casing will be run and cemented with adequate cover, perforated and stimulated as needed for production.

MUD PROGRAM: FW gel/LCM to 790', Brine to 3200', Brine/KCL water to TD.

GAS NOT DEDICATED.

Posted A.P.D.
JD-10h/Book
3-2-84

IN ABOVE SPACE DESCRIBE PROPOSED PROGRAM: If proposal is to deepen or plug back, give data on present productive zone and proposed new productive zone. If proposal is to drill or deepen directionally, give pertinent data on subsurface locations and measured and true vertical depths. Give blowout preventer program, if any.

24.

SIGNED

TITLE Regulatory Agent

DATE 2/3/84

(This space for Federal or State office use)

PERMIT NO.

APPROVAL DATE

Associate Manager

APPROVED BY

TITLE

DATE

APPROVAL SUBJECT TO
GENERAL REQUIREMENTS AND
SPECIAL STIPULATIONS
ATTACHED

CONDITIONS OF APPROVAL, IF ANY:

DE CHAIRS BROWNS
ONE PIVIMBROUN JACOB
PACIFIC 1912 JACOB
PACIFIC 1912 JACOB

All distances must be from the outer boundaries of the Section.

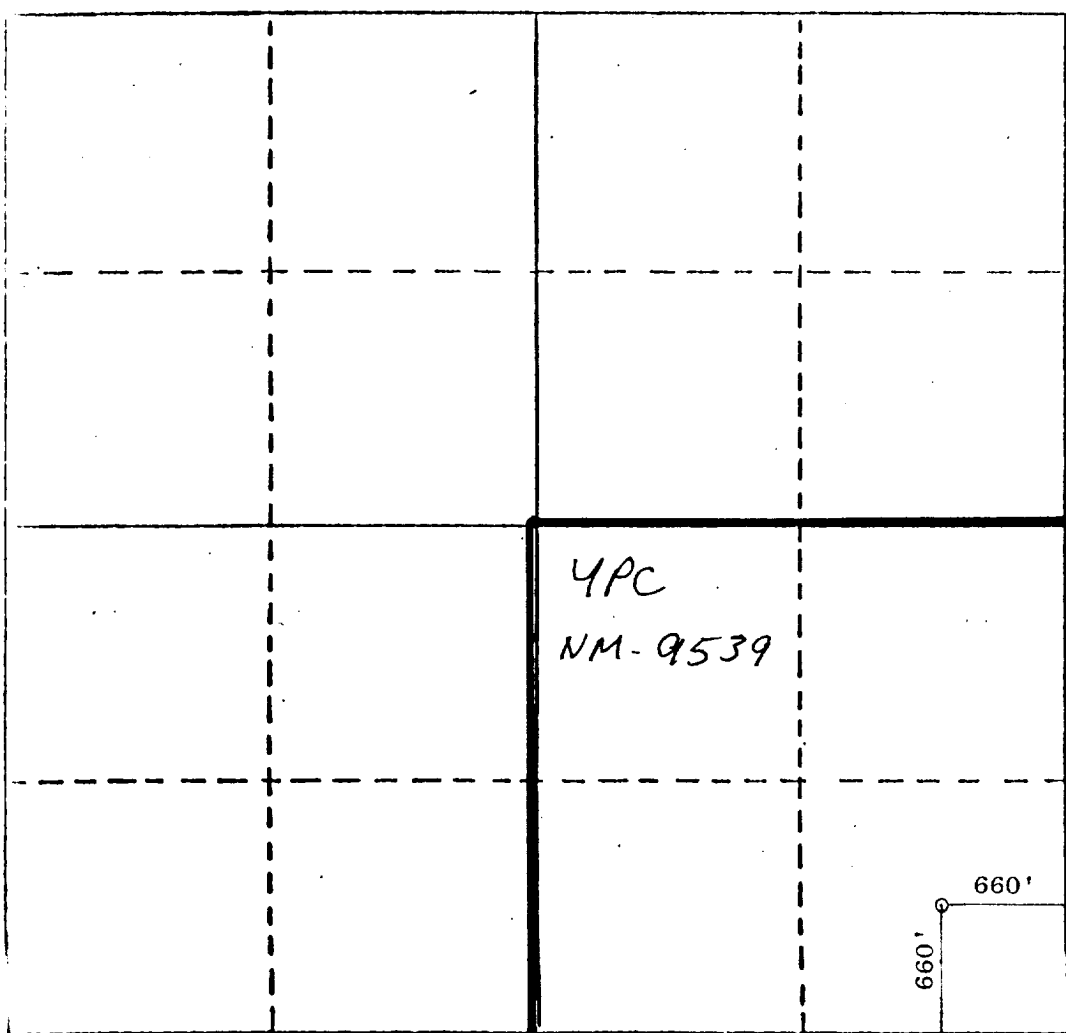
Operator Yates Petroleum Corporation		Lease Williamson LC		Well No. Fed. # 9
Well Letter P	Section 4	Township 8 South	Range 25 East	County Chaves
Actual Well Location of Well: 660 feet from the South line and 660 feet from the East line				
Ground Level Elev. 3594.9	Producing Formation ABO	Pool PECOS SLOPE ABO	Dedicated Acreage: 160 Acres	

1. Outline the acreage dedicated to the subject well by colored pencil or hatchure marks on the plat below.
2. If more than one lease is dedicated to the well, outline each and identify the ownership thereof (both as to working interest and royalty).
3. If more than one lease of different ownership is dedicated to the well, have the interests of all owners been consolidated by communitization, unitization, force-pooling, etc?

☐ Yes ☐ No If answer is "yes," type of consolidation _____

If answer is "no," list the owners and tract descriptions which have actually been consolidated. (Use reverse side of this form if necessary.) _____

No allowable will be assigned to the well until all interests have been consolidated (by communitization, unitization, forced-pooling, or otherwise) or until a non-standard unit, eliminating such interests, has been approved by the Division.

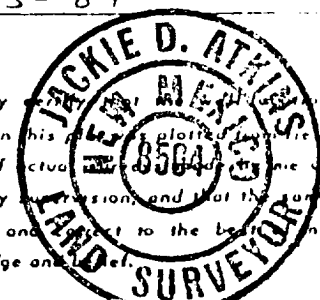


CERTIFICATION

I hereby certify that the information contained herein is true and complete to the best of my knowledge and belief.

Gliserio Rodriguez
Name
GLISERIO RODRIGUEZ
Position
REG. AGT.
Company
YATES PETROLEUM CORP.
Date
2-3-84

I hereby certify that the information shown on this plat, including notes of actual survey, is true and correct to the best of my knowledge and belief.

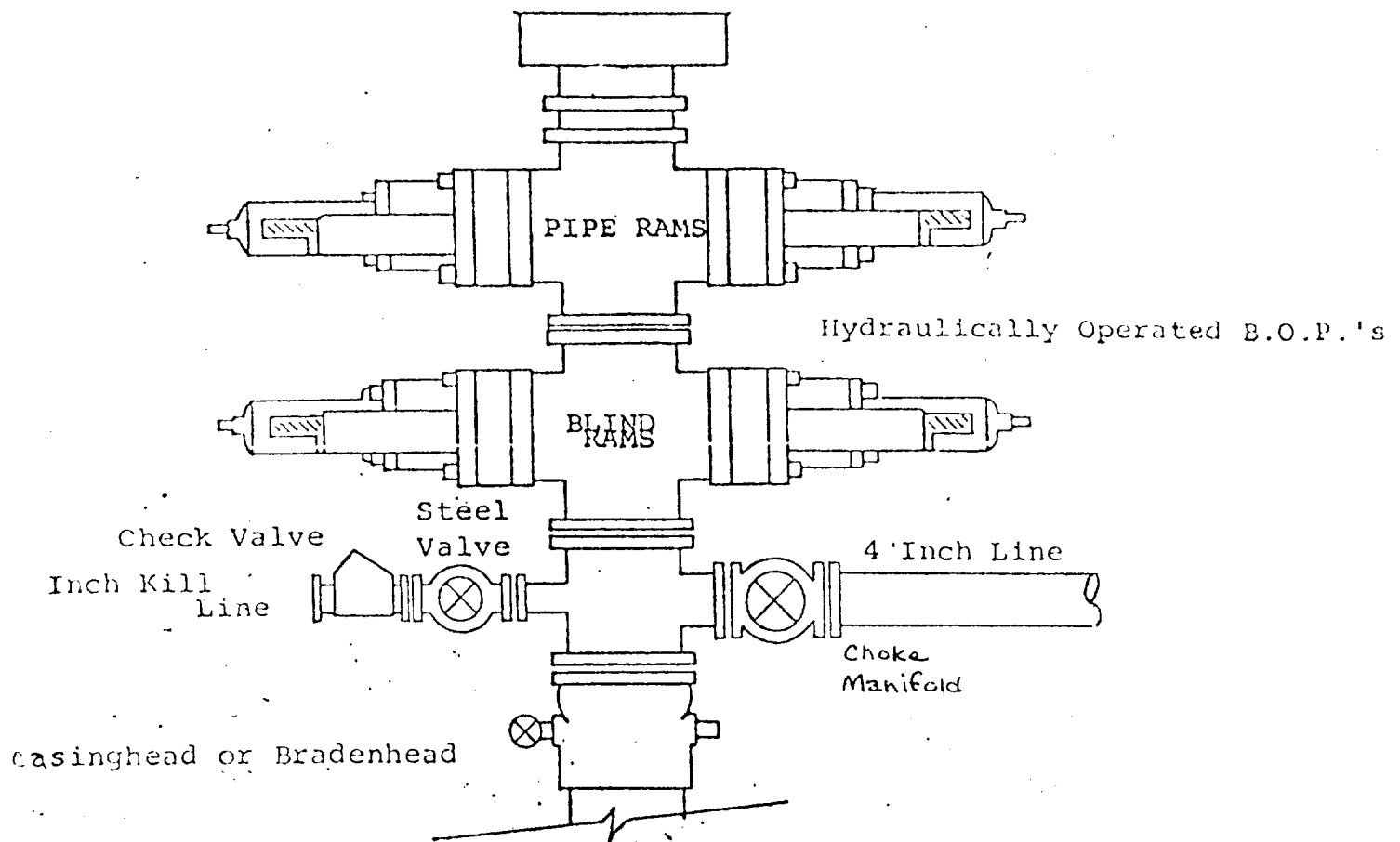


Jan 30, 1984
Date Surveyed
Jackie D. Atkins
Registered Professional Engineer
and/or Land Surveyor

P.E. 6403 LS 8504
Certificate No.

330 660 990 1320 1650 1980 2310 2640 2970 3300 3630 3960 4290 4620 4950 5280 5610 5940 6270 6600

EXHIBIT B
BDP DIAGRAM



YATES PETROLEUM CORPORATION
Williamson "LC" Federal #9
660' FSL and 660' FEL

Sec. 4-T8S-R25E

In conjunction with Form 9-331C, Application for Permit to Drill subject well, Yates Petroleum Corporation submits the following ten items of pertinent information in accordance with BLM requirements.

1. The geologic surface formation is quaternary alluvium.

2. The estimated tops of geologic markers are as follows:

San Andres	370'
Glorieta	1470'
Fullerton	2880'
Abo	3570'
TD	4125'

3. The estimated depths at which anticipated water, oil or gas formations are expected to be encountered:

Water: 225' approximately

Oil or Gas: Abo 3600'

4. Proposed Casing Program: See Form 9-331C.

5. Pressure Control Equipment: See Form 9-331C.

6. Mud Program: See Form 9-331C.

7. Auxiliary Equipment: Kelly Cock; pit level indicators and flow sensor equipment; sub with full-opening valve on floor, drill pipe connection.

8. Testing, Logging and Coring Program:

Samples: Surface casing to TD.

DST's: As warranted.

Coring: None.

Logging: CNL-FDC TD to csg w/GR-CNL to surface & DLL from TD to csg.

9. No abnormal pressures or temperatures are anticipated.

10. Anticipated starting date: As soon as possible after approval.

۷

32

33

34

۲۲۲

WILLIAMSON "L.C." FEDERAL #49

660' FSL & 660' FEEL

Sec. 4 - T85-R25

Chaves County, N.M.

EXHIBIT A

WILLIAMSON "LC"

FED. #9

67

LC 37

Dunker
L.A.
3

motor
52

125

10

Coyote

Peru. 18

28.

지

153

50

10/10/10

10

YATES PETROLEUM CORP.

Exhibit C

