

NM OIL CONS. COMMISSION

ARTESIA, DEPARTMENT OF THE INTERIOR
GEOLOGICAL SURVEYRECEIVED BY
SUBMIT IN THE OFFICE

FEB 24 1984

O. C. D.

Form approved.
Budget Bureau No. 42-R1425.

LEASE DESIGNATION AND SERIAL NO.

NM-20344

NAME OF INDIAN, ALLOTTEE OR TRIBE NAME

APPLICATION FOR PERMIT TO DRILL, DEEPEN, OR PLUG BACK

1a. TYPE OF WORK

DRILL ☒DEEPEN ☐PLUG BACK ☐

b. TYPE OF WELL

OIL
WELL ☐GAS
WELL ☒

OTHER

SINGLE
ZONE ☐MULTIPLE
ZONE ☐

2. NAME OF OPERATOR

Yates Petroleum Corporation ✓

3. ADDRESS OF OPERATOR

207 S. 4th, Artesia, New Mexico 88210

4. LOCATION OF WELL (Report location clearly and in accordance with any State requirements.)*

At surface
660' FSL and 660' FWL

At proposed prod. zone

same

14. DISTANCE IN MILES AND DIRECTION FROM NEAREST TOWN OR POST OFFICE*

30 miles NE of Roswell, NM.

15. DISTANCE FROM PROPOSED*

LOCATION TO NEAREST
PROPERTY OR LEASE LINE, FT.
(Also to nearest drlg. unit line, if any)

660'

16. NO. OF ACRES IN LEASE

604

17. NO. OF ACRES ASSIGNED
TO THIS WELL

160

18. DISTANCE FROM PROPOSED LOCATION*
TO NEAREST WELL, DRILLING, COMPLETED,
OR APPLIED FOR, ON THIS LEASE, FT.

19. PROPOSED DEPTH

appr. 4550'

20. ROTARY OR CABLE TOOLS

Rotary

21. ELEVATIONS (Show whether DF, RT, GR, etc.)

3811' GL

22. APPROX. DATE WORK WILL START*

ASAP

PROPOSED CASING AND CEMENTING PROGRAM

SIZE OF HOLE	SIZE OF CASING	WEIGHT PER FOOT	SETTING DEPTH	QUANTITY OF CEMENT
17 3/4"	13 3/8"	40.5# J-55	900'	900 sx circulated
7 7/8"	4 1/2"	9.5# J-55	TD	350 sx

We propose to drill and test the Abo and intermediate formations. Approximately 950' of surface casing will be set and cement circulated to shut off gravel and caving. If needed (lost circulation) 8 5/8" intermediate casing will be run to 1500' and cemented with enough cement calculated to tie back into the surface casing. If commercial, production casing will be run and cemented with adequate cover, perforated and stimulated as needed for production.

MUD PROGRAM: FW gel/LCM to 900', Brine to 3200', Brine/KCL water to TD.

BOP PROGRAM: BOP's will be installed at the offset and tested daily.

GAS NOT DEDICATED.

IN ABOVE SPACE DESCRIBE PROPOSED PROGRAM: If proposal is to deepen or plug back, give data on present productive zone and proposed new productive zone. If proposal is to drill or deepen directionally, give pertinent data on subsurface locations and measured and true vertical depths. Give blowout preventer program, if any.

24.

SIGNED

TITLE

Regulatory Agent

DATE

2/16/84

PERMIT NO.

APPROVAL DATE

Associate

District Manager

APPROVED BY

TITLE

DATE

FEB 16 1984

CONDITIONS OF APPROVAL, IF ANY:

APPROVAL SUBJECT TO
GENERAL REQUIREMENTS AND
SPECIAL STIPULATIONS
ATTACHED

NEW MEXICO OIL CONSERVATION COMMISSION
WE LOCATION AND ACREAGE DEDICATION PLAT

Form C-102
 Supersedes C-128
 Effective 1-1-65

All distances must be from the outer boundaries of the Section.

Operator YATES PETROLEUM CORPORATION			Lease Cramer ZD Federal		Well No. 1
First Letter M	Section 12	Township 6 South	Range 26 East	County Chaves	
Actual Footage Location of Well:					
660 feet from the South line and		660 feet from the West line			
Ground Level Elev. 3811.	Producing Formation Abo	Pool Under. Pecos Slope Abo		Dedicated Acreage: 160 Acres	

1. Outline the acreage dedicated to the subject well by colored pencil or hatchure marks on the plat below.
2. If more than one lease is dedicated to the well, outline each and identify the ownership thereof (both as to working interest and royalty).
3. If more than one lease of different ownership is dedicated to the well, have the interests of all owners been consolidated by communitization, unitization, force-pooling, etc?

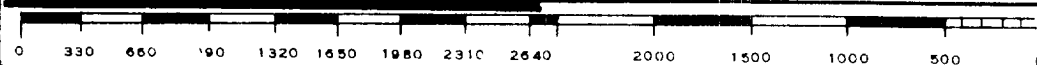
☐ Yes ☐ No If answer is "yes," type of consolidation _____

If answer is "no," list the owners and tract descriptions which have actually been consolidated. (Use reverse side of this form if necessary.) _____

No allowable will be assigned to the well until all interests have been consolidated (by communitization, unitization, forced-pooling, or otherwise) or until a non-standard unit, eliminating such interests, has been approved by the Commission.

NM-20344
 YPC

660'

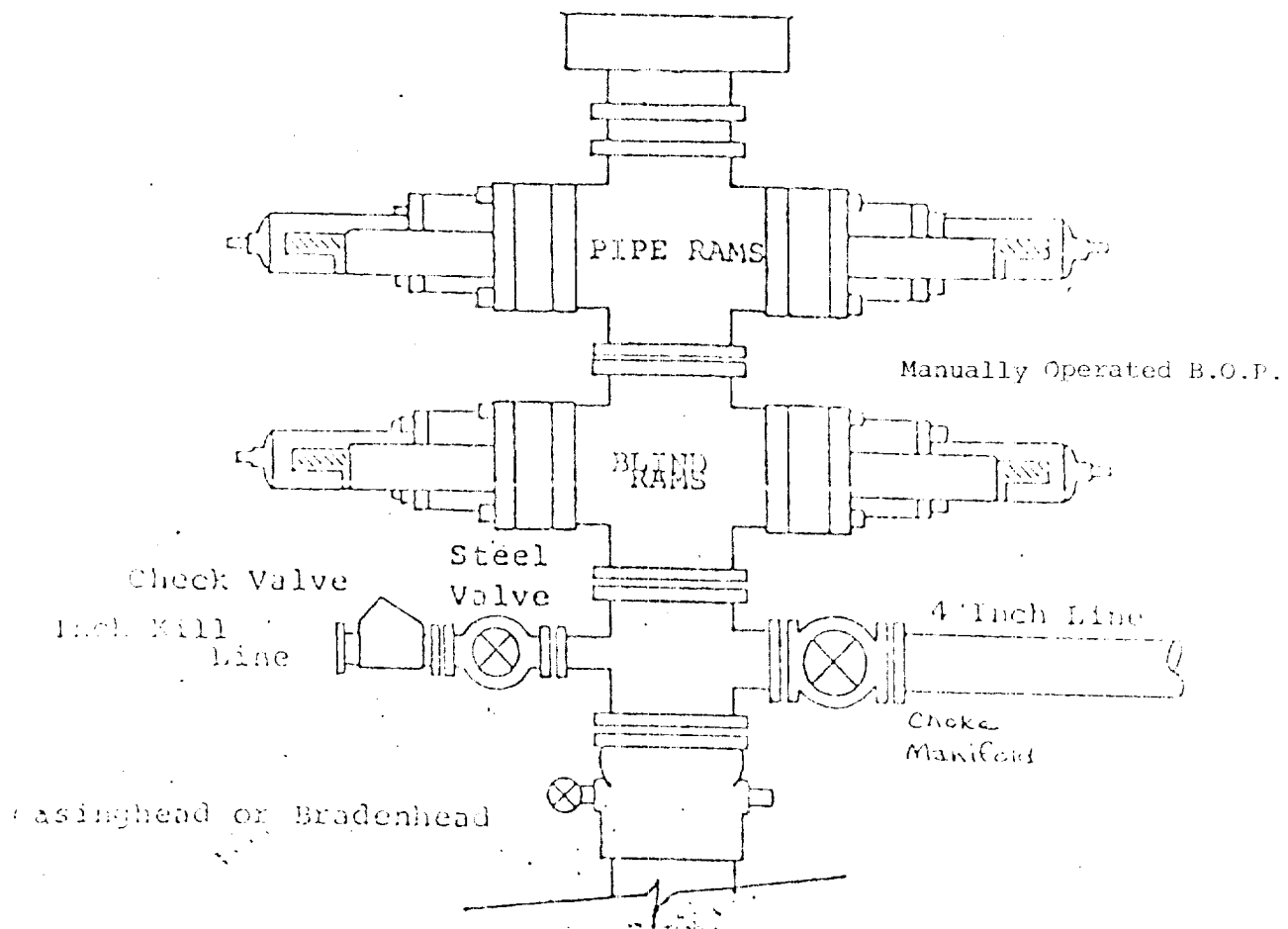


CERTIFICATION	
I hereby certify that the information contained herein is true and complete to the best of my knowledge and belief.	
<i>Gliserio Rodriguez</i>	
Name	Gliserio Rodriguez
Position	Regulatory Agent
Company	Yates Petroleum Corp.
Date	2/16/84
I hereby certify that the well location shown on this plat was plotted from field notes of actual surveys made by me or under my supervision, and that the same is true and correct to the best of my knowledge and belief.	
Date Surveyed	February 12, 1984
Registered Professional Engineer and/or Land Surveyor	
<i>Dan R. Reddy</i>	
Certificate No.	NM PE&LS #5412

EXHIBIT B

BDP DIAGRAM

RATED 3000[#]



YATES PETROLEUM CORPORATION
Cramer "ZD" Federal #1
660' FSL and 660' FWL
Sec. 12-T6S-R26E

In conjunction with Form 9-331C, Application for Permit to Drill subject well, Yates Petroleum Corporation submits the following ten items of pertinent information in accordance with BLM requirements.

1. The geologic surface formation is sandy alluvium.
2. The estimated tops of geologic markers are as follows:

San Andres	720'
Glorieta	1450'
Fullerton	3850'
Abo	4300'
TD	4550'

3. The estimated depths at which anticipated water, oil or gas formations are expected to be encountered:

Water: appr. 250'

Oil or Gas: 4350'

4. Proposed Casing Program: See Form 9-331C.
5. Pressure Control Equipment: See Form 9-331C.
6. Mud Program: See Form 9-331C.
7. Auxiliary Equipment: Kelly Cock; pit level indicators and flow sensor equipment; sub with full-opening valve on floor, drill pipe connection.
8. Testing, Logging and Coring Program:

Samples: Surface casing to TD.
DST's: As warranted.
Coring: None.
Logging: CNL-FDC TD to csg w/GR-CNL to surface & DLL from TD to csg.
9. No abnormal pressures or temperatures are anticipated.
10. Anticipated starting date: As soon as possible after approval.

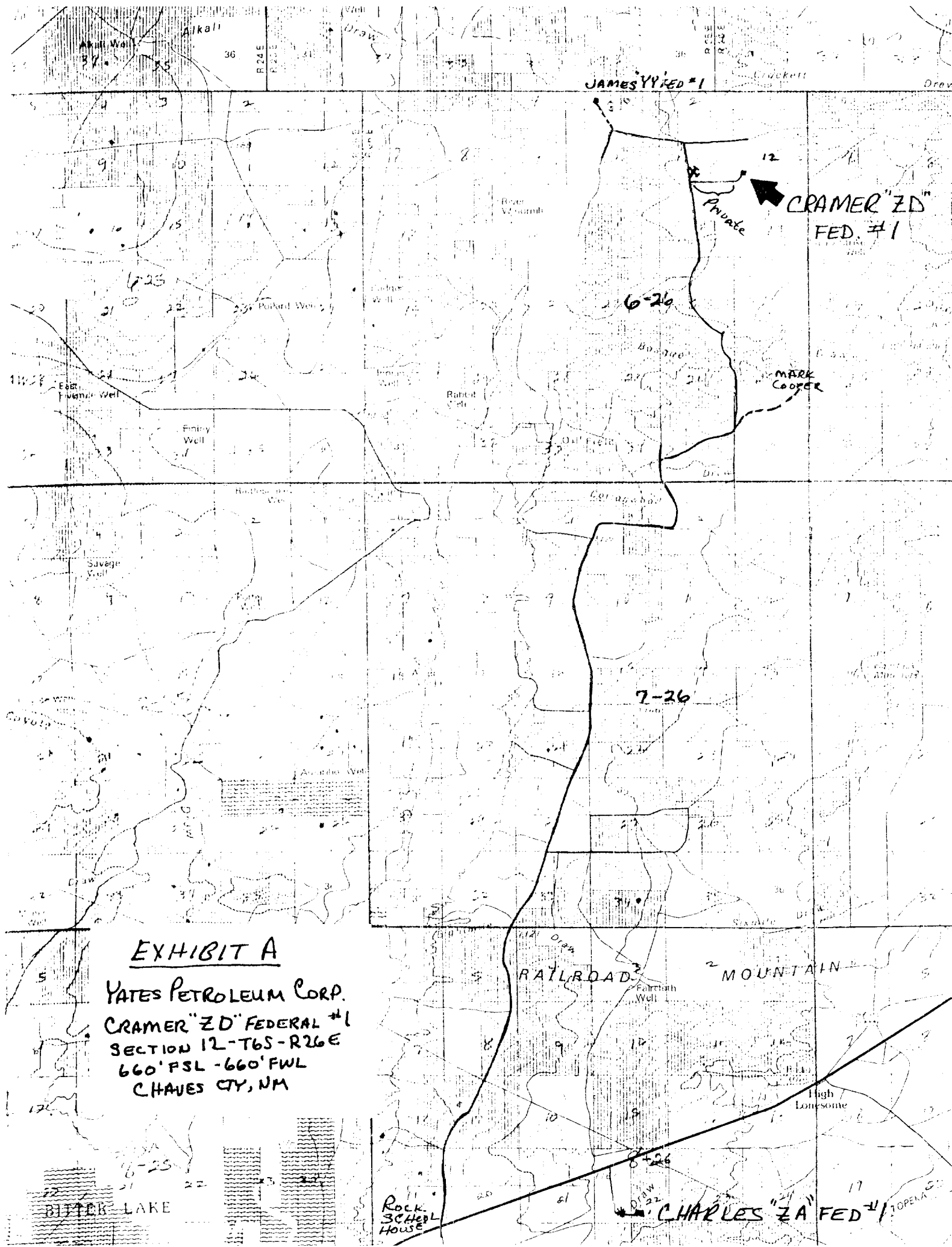


EXHIBIT A

YATES PETROLEUM CORP.
CRAMER "ZD" FEDERAL #1
SECTION 12-T6S-R26E
660' FSL - 660' FWL
CHAVES CTY, NM

CHARLES "ZA" FED #1

YATES PETROLEUM CORP.

Exhibit C

