

RECEIVED BY

FEB 28 1984

UNITED STATES
DEPARTMENT OF THE INTERIOR
ARTESIA GEOLOGICAL SURVEY

NM OIL CONS. COMMISSION

Drawer DD

Artesia, NM 88210

SUBMIT IN TRIPPLICATE*

Other instructions on
reverse sideForm approved.
Budget Bureau No. 42-R1425.

30-005-62124

LEASE DESIGNATION AND SERIAL NO.
NM 54263

IF INDIAN, ALLOTTEE OR TRIBE NAME

APPLICATION FOR PERMIT TO DRILL, DEEPEN, OR PLUG BACK

1a. TYPE OF WORK

DRILL ☒DEEPEN ☐PLUG BACK ☐

7. UNIT AGREEMENT NAME

b. TYPE OF WELL

OIL
WELL ☒GAS
WELL ☐OTHER ☐SINGLE
ZONE ☒MULTIPLE
ZONE ☐

8. FARM OR LEASE NAME

Reep Federal

9. WELL NO.

1

10. FIELD AND POOL, OR WILDCAT

Wildcat

11. SEC., T., R., M., OR BLK.
AND SURVEY OR AREA

Sec. 34-11S-26E

12. COUNTY OR PARISH

Chaves

13. STATE

N.M.

2. NAME OF OPERATOR

CARL A. SCHELLINGER

3. ADDRESS OF OPERATOR

P.O. Box 447

Roswell, New Mexico 88201

4. LOCATION OF WELL (Report location clearly and in accordance with any State requirements.)

At surface

660' FNL

1650' FEL

Sec. 34

At proposed prod. zone

Same

14. DISTANCE IN MILES AND DIRECTION FROM NEAREST TOWN OR POST OFFICE*

12.5 Miles southeast of Roswell, New Mexico

15. DISTANCE FROM PROPOSED*

LOCATION TO NEAREST

PROPERTY OR LEASE LINE, FT.

(Also to nearest drlg. unit line, if any.)

660'

16. NO. OF ACRES IN LEASE

1240

17. NO. OF ACRES ASSIGNED
TO THIS WELL

40

18. DISTANCE FROM PROPOSED LOCATION*

TO NEAREST WELL, DRILLING, COMPLETED,
OR APPLIED FOR, ON THIS LEASE, FT.

None

19. PROPOSED DEPTH

6140' Granite

20. ROTARY OR CABLE TOOLS

Rotary

21. ELEVATIONS (Show whether DF, RT, GR, etc.)

3608' G.L.

22. APPROX. DATE WORK WILL START*

February 1, 1984

23.

PROPOSED CASING AND CEMENTING PROGRAM

SIZE OF HOLE	SIZE OF CASING	WEIGHT PER FOOT	SETTING DEPTH	QUANTITY OF CEMENT
17-1/2"	13-3/8"	48.0# H-40	295'±	325 sx Circulated
12-1/4"	8-5/8"	24.0# J-55	1300'±	300 sx Circulated
7-7/8"	4-1/2"	11.6# K-55	6100'±	300 sx Sufficient to isolate all water, gas or oil zones.

Propose to drill to granite to test all sedimentary formations.
Set about 295' of 13-3/8" surface casing and cement to surface.
Set about 1300' of 8-5/8" intermediate casing and cement to surface to protect any fresh water zones.

Run 4-1/2" production casing to deepest zone that appears commercial and cement to isolate the zone.

Complete by selectively perforating and treating favorable zones.

See attached "Drilling Data" and BOP plans.

Posted APD
JD-124/Bomb
3-2-84

IN ABOVE SPACE DESCRIBE PROPOSED PROGRAM: If proposal is to deepen or plug back, give data on present productive zone and proposed new productive zone. If proposal is to drill or deepen directionally, give pertinent data on subsurface locations and measured and true vertical depths. Give blowout preventer program, if any.

24.

SIGNED

JERRY W. LONG

Agent

TITLE

DATE December 29, 1983

(This space for Federal or State office use)

PERMIT NO.

APPROVAL DATE

APPROVED BY

S/Richard Bastin

TITLE

Associate District Manager

DATE

FEB 24 1984

CONDITIONS OF APPROVAL, IF ANY:

APPROVAL SUBJECT TO
GENERAL REQUIREMENTS AND
SPECIAL STIPULATIONS
ATTACHED

STATE OF NEW MEXICO
ENERGY AND MINERALS DEPARTMENT

U.S. CONSERVATION DIVISION
P. O. BOX 2088
SANTA FE, NEW MEXICO 87501

Form C-102
Revised 10-1-78

All distances must be from the outer boundaries of the Section.

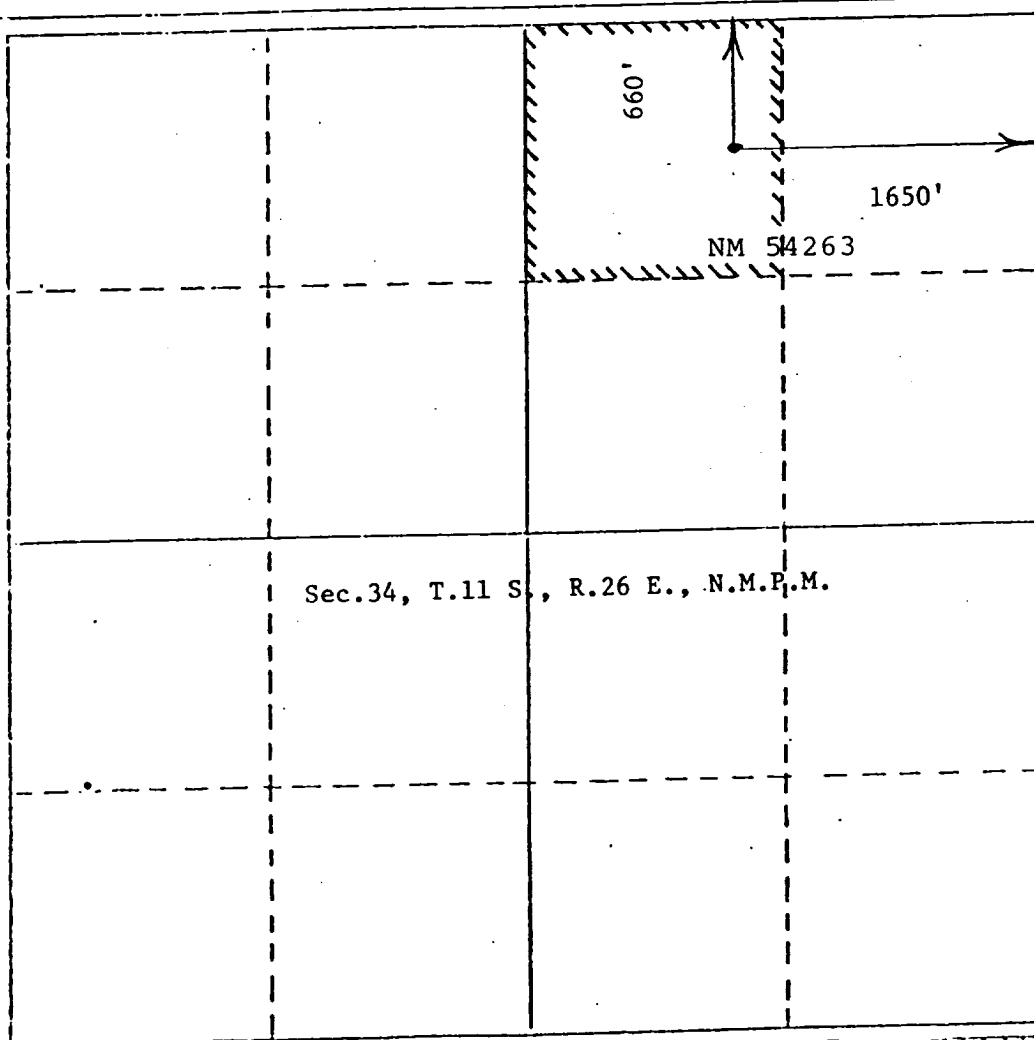
Operator Carl Schellinger			Lease Reep XXXX Federal		Well No. #1
Unit Letter B	Section 34	Township 11 South	Range 26 East	County Chaves	
Actual Postage Location of Well:					
660 feet from the		North	line and	1650 feet from the	East line
Ground Level Elev. 3608	Producing Formation Ellenburger		Pool Wildcat		Dedicated Acreage: 40 Acres

1. Outline the acreage dedicated to the subject well by colored pencil or hatchure marks on the plat below.
2. If more than one lease is dedicated to the well, outline each and identify the ownership thereof (both as to working interest and royalty). SINGLE LEASE
3. If more than one lease of different ownership is dedicated to the well, have the interests of all owners been consolidated by communitization, unitization, force-pooling, etc?

☐ Yes ☐ No If answer is "yes," type of consolidation _____

If answer is "no," list the owners and tract descriptions which have actually been consolidated. (Use reverse side of this form if necessary.) _____

No allowable will be assigned to the well until all interests have been consolidated (by communitization, unitization, forced-pooling, or otherwise) or until a non-standard unit, eliminating such interests, has been approved by the Division.



CERTIFICATION

I hereby certify that the information contained herein is true and complete to the best of my knowledge and belief.

Jerry W. Long
Name
JERRY W. LONG

Position
Agent

Company
CARL A. SCHELLINGER

Date
December 29, 1983

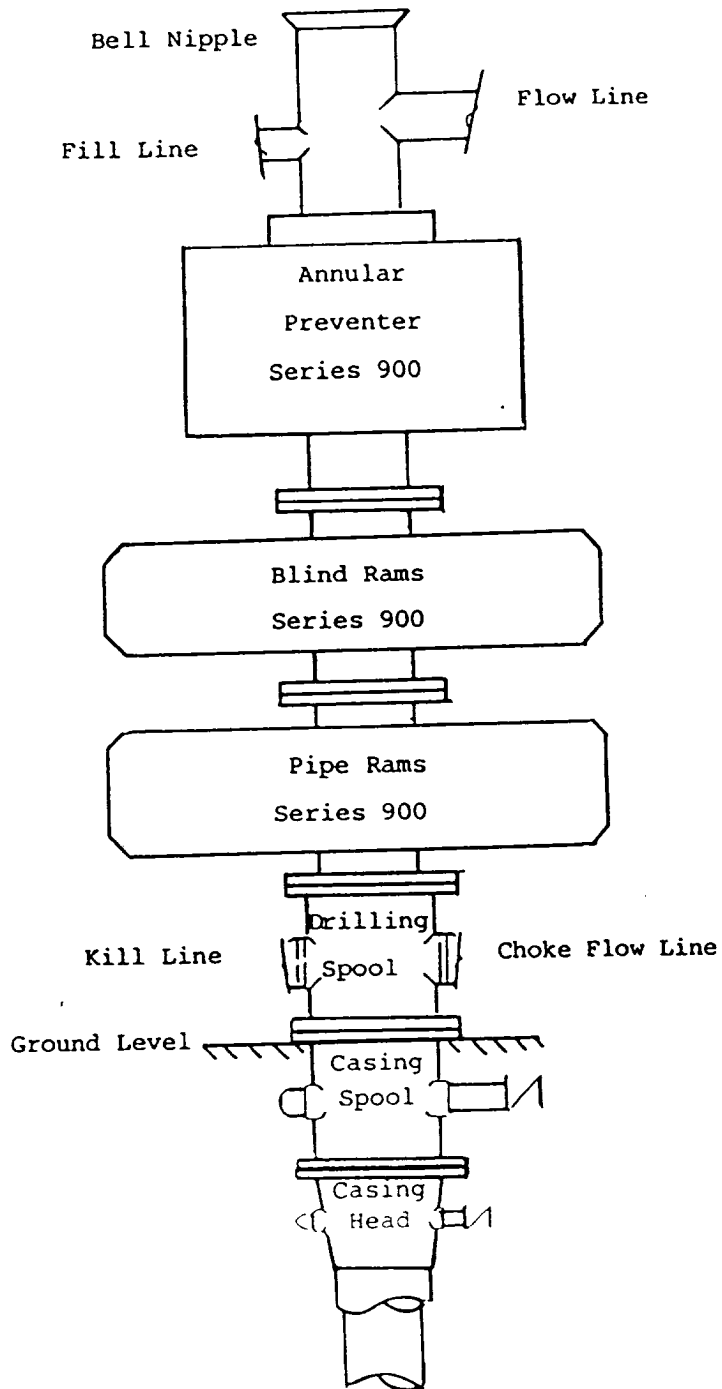
I hereby certify that the well location shown on this plat was plotted from field notes of actual surveys made by me or under my supervision, and that the same is true and correct to the best of my knowledge and belief.

Date Surveyed
December 29, 1983

Registered Professional Engineer and/or Land Surveyor
6290

John D. Jaquess
John D. Jaquess, P.E. & L.S.
Certification No. **6290**

CARL A. SCHELLINGER
No.1 Reep Federal
NW¼NE¼ Sec.34-11S-26E
Chaves County, N.M.



BLOWOUT PREVENTER STACK
Rams Operated Daily
3000# WP

EXHIBIT D

SUPPLEMENTAL DRILLING DATA

CARL A. SCHELLINGER
No.1 Reep Federal
NW $\frac{1}{4}$ NE $\frac{1}{4}$ Sec.34-11S-26E
Chaves County, N.M.

NM 54263

The following items supplement Form 9-331C in accordance with Onshore Oil and Gas Order No.1.

1. SURFACE FORMATION: Artesia Group

2. ESTIMATED TOPS OF GEOLOGIC MARKERS:

San Andres	-	840'	Cisco	-	5590'
Yeso	-	2110'	Montoya	-	5840'
Abo	-	4280'	Ellenburger	-	5900'
Wolfcamp	-	5100'	Pre-Cambrian	-	6140'

3. ESTIMATED DEPTHS TO WATER, OIL OR GAS FORMATIONS:

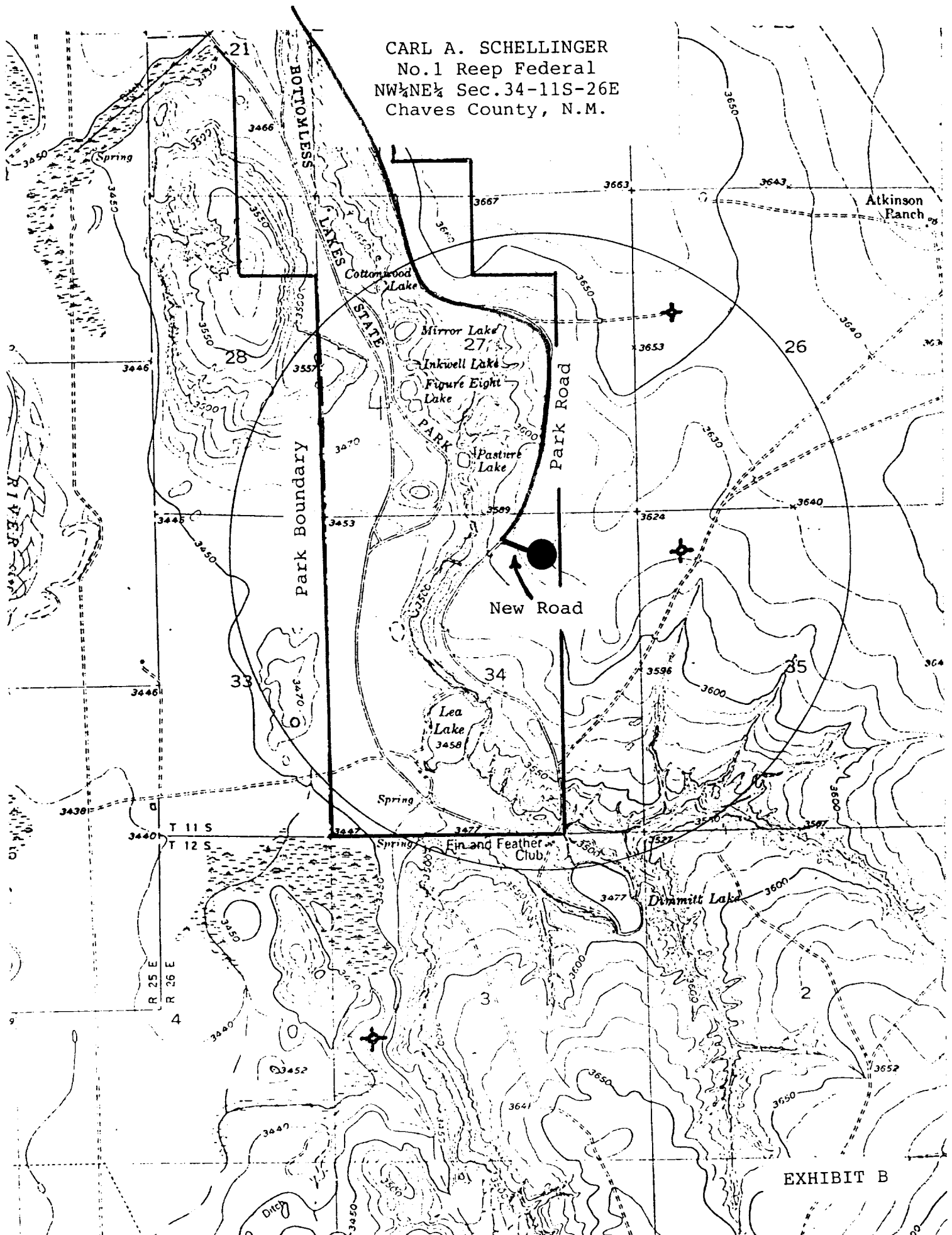
<u>Water</u>	-	100' to 250'
<u>Oil and Gas</u>	-	Queen - 600'
	-	San Andres - 900'
	-	Abo - 4300'
	-	Pennsylvanian - 5600'
	-	Ellenburger - 5900'

4. PROPOSED CASING PROGRAM:

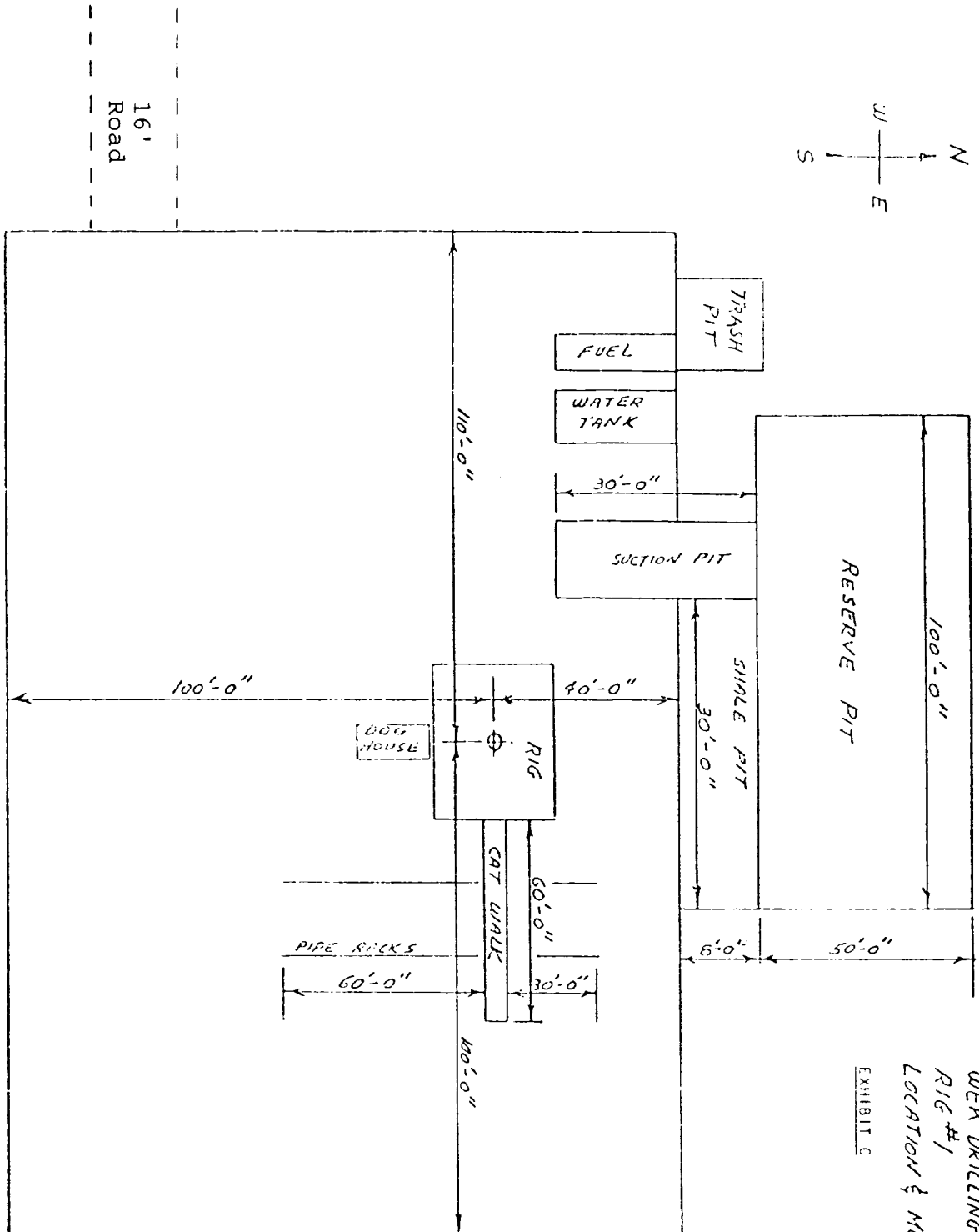
13-3/8" Casing	-	48.0#, H-40, set at 295'± with cement circulated to the surface
8-5/8" Casing	-	24.0#, J-55, set at 1300'± with cement circulated to the surface.
4-1/2" Casing	-	11.6#, K-55, set thru the lowest productive zone and cemented to isolate all oil, gas and water zones.

5. PRESSURE CONTROL EQUIPMENT: Blowout prevention equipment will include a 3000# WP stack with Series 900 annular preventer and Series 900 blind and pipe rams. The stack will include a kill line and choke manifold tested to 2000 psi. BOP hydraulic controls will be operated at least daily. Mud weight will be monitored to control bottom hole pressure. A kelly cock will be installed on the kelly joint and a full-opening safety valve, to fit the drill string in use, will be available on the rig floor. A BOP sketch designated as Exhibit "D" is attached.

CARL A. SCHELLINGER
No.1 Reep Federal
NW¼NE¼ Sec.34-11S-26E
Chaves County, N.M.



CARL A. SCHELLINGER
No.1 Reep Federal
NW¼NE¼ Sec.34-11S-26E
Chaves County, N.M.



WEK DRILLING Co., INC.
RIG #1
LOCATION & MUD PIT SPECS
EXHIBIT C