

All distances must be from the outer boundaries of the section.

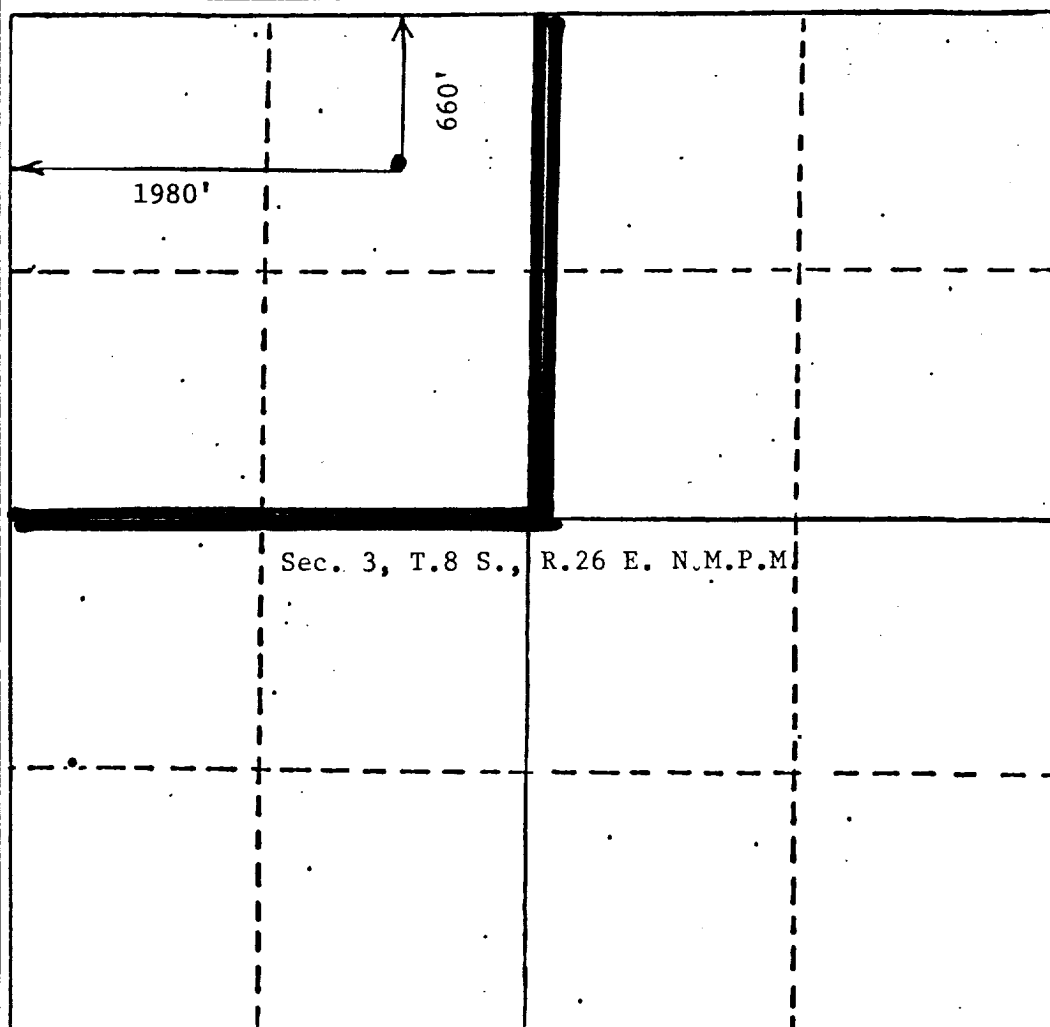
|   |                            |                        |                                |                  |
|---|----------------------------|------------------------|--------------------------------|------------------|
| Operator<br>McKay Oil Corp.   |                            | Lease<br>McKay Winston |                                | Well No.<br>1    |
| Unit Letter<br>C  | Section<br>3               | Township<br>8 South    | Range<br>26 East               | County<br>Chaves |
| Actual Postage Location of Well:<br>660 feet from the North line and 1980 feet from the West line |                            |                        |                                |                  |
| Ground Level Elev.<br>3766  | Producing Formation<br>ABO | Pool<br>undesignated   | Dedicated Acreage<br>160 Acres |                  |

1. Outline the acreage dedicated to the subject well by colored pencil or hatchure marks on the plat below.
2. If more than one lease is dedicated to the well, outline each and identify the ownership thereof (both as to working interest and royalty).
3. If more than one lease of different ownership is dedicated to the well, have the interests of all owners been consolidated by communitization, unitization, force-pooling, etc?

☒ Yes ☐ No If answer is "yes," type of consolidation Designation of Pooled Unit  
(will be entered into)

If answer is "no," list the owners and tract descriptions which have actually been consolidated. (Use reverse side of this form if necessary.)

No allowable will be assigned to the well until all interests have been consolidated (by communitization, unitization, forced-pooling, or otherwise) or until a non-standard unit, eliminating such interests, has been approved by the Division



### CERTIFICATION

I hereby certify that the information contained herein is true and complete to the best of my knowledge and belief.

*James L. Schultz*

Name  
James L. Schultz

Position  
Landman

Company  
McKay Oil Corporation

Date  
3-27-84

I hereby certify that the well location shown on this plat was plotted from field notes of actual surveys made by me or under my supervision, and that the same is true and correct to the best of my knowledge and belief.

Date Surveyed  
March 15, 1984

Registered Professional Engineer and/or Land Surveyor

*John D. Jaquess*

John D. Jaquess, P.E. & L.S.

Certificate No.  
6290

330 660 990 1320 1650 1980 2310 2640 2970 3300 3630 3960 4290 4620 4950 5280 5610 5940 6270 6600 6930 7260 7590 7920 8250 8580 8910 9240 9570 9900