

NM OIL CONS. MISSION

Drawer DD

Artesia, NM 88210

UNITED STATES

DEPARTMENT OF THE INTERIOR MAR 2 1984

GEOLOGICAL SURVEY

RECEIVED
SUBMIT IN TRIPLICATE*
(Other instructions on
reverse side)Form approved.
Budget Bureau No. 42-R1425.

30-005-62150

APPLICATION FOR PERMIT TO DRILL, DEEPEN, OR PLUG BACK

1a. TYPE OF WORK

DRILL ☒DEEPEN ☐ROSWELL, NEW MEXICO ☐PLUG BACK ☐

b. TYPE OF WELL

OIL
WELL ☒GAS
WELL ☐OTHER ☐SINGLE
ZONE ☐MULTIPLE
ZONE ☐

2. NAME OF OPERATOR

Yates Petroleum Corporation

3. ADDRESS OF OPERATOR

207 S. 4th, Artesia, New Mexico 88210

4. LOCATION OF WELL (Report location clearly and in accordance with any State requirements.)*

At surface

330' FEL and 2310' FNL

At proposed prod. zone

same

14. DISTANCE IN MILES AND DIRECTION FROM NEAREST TOWN OR POST OFFICE*

Approximately 18 miles east of Roswell, New Mexico.

15. DISTANCE FROM PROPOSED*

LOCATION TO NEAREST

PROPERTY OR LEASE LINE, FT.

(Also to nearest drlg. unit line, if any)

18. DISTANCE FROM PROPOSED LOCATION*

TO NEAREST WELL, DRILLING, COMPLETED,
OR APPLIED FOR, ON THIS LEASE, FT.

21. ELEVATIONS (Show whether DF, RT, GR, etc.)

4081' GL

16. NO. OF ACRES IN LEASE

160

17. NO. OF ACRES ASSIGNED
TO THIS WELL

40

19. PROPOSED DEPTH

appr. 3475'

20. ROTARY OR CABLE TOOLS

Rotary

22. APPROX. DATE WORK WILL START*

ASAP

23.

PROPOSED CASING AND CEMENTING PROGRAM

SIZE OF HOLE	SIZE OF CASING	WEIGHT PER FOOT	SETTING DEPTH	QUANTITY OF CEMENT
14 3/4"	10 3/4"	40.5# J-55	375'	350 sx circ
7 7/8"	4 1/2"	9.5# J-55	TD	300 sx

We propose to drill and test the San Andres and intermediate formations. Approximately 375' of surface casing will be set and cement circulated to shut off gravel and caving. ~~If needed (lost circulation) 8 5/8" intermediate casing will be run to 1200' and cemented with enough cement calculated to tie back into the surface casing.~~ If commercial, production casing will be run and cemented with adequate cover, perforated and stimulated as needed for production.

MUD PROGRAM: FW gel/LCM to 375', FW to TD.

BOP PROGRAM: BOP's will be installed on surface casing and tested daily.

IN ABOVE SPACE DESCRIBE PROPOSED PROGRAM: If proposal is to deepen or plug back, give data on present productive zone and proposed new productive zone. If proposal is to drill or deepen directionally, give pertinent data on subsurface locations and measured and true vertical depths. Give blowout preventer program, if any.

24.

SIGNED

Glenn Rodriguez

TITLE Regulatory Agent

DATE 3/1/84

(This space for Federal or State office use)

PERMIT NO.

S/ Richard D. Smith

APPROVAL DATE

Associate District Manager

APPROVED BY

TITLE

DATE

MAR 2 1984

CONDITIONS OF APPROVAL, IF ANY:

APPROVAL SUBJECT TO
GENERAL REQUIREMENTS AND
SPECIAL STIPULATIONS
ATTACHED

NEW MEXICO OIL CONSERVATION COMMISSION
WELL LOCATION AND ACREAGE DEDICATION PLAT

Form C-102
Supersedes C-128
Effective 1-1-65

All distances must be from the outer boundaries of the Section.

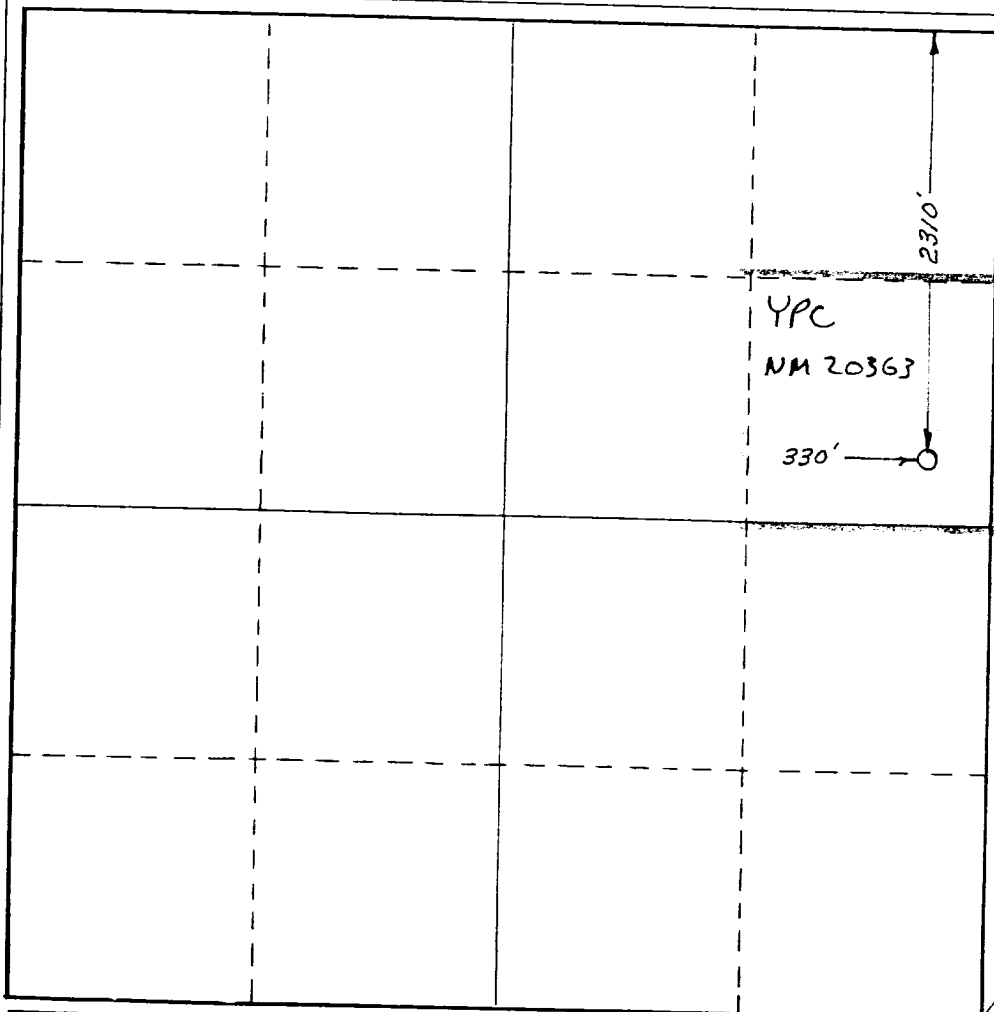
Operator YATES PETROLEUM CORPORATION		Lease CLEARY "ZE" FEDERAL		Well No. 1
Unit Letter H	Section 24	Township 7 South	Range 29 East	County Chaves
Actual Footage Location of Well: 330 feet from the East line and 2310 feet from the North line				
Ground Level Elev. 4081.0	Producing Formation San Andres	Pool Wildcat San Andres	Dedicated Acreage: 40 Acres	

1. Outline the acreage dedicated to the subject well by colored pencil or hachure marks on the plat below.
2. If more than one lease is dedicated to the well, outline each and identify the ownership thereof (both as to working interest and royalty).
3. If more than one lease of different ownership is dedicated to the well, have the interests of all owners been consolidated by communitization, unitization, force-pooling, etc?

☐ Yes ☐ No If answer is "yes," type of consolidation _____

If answer is "no," list the owners and tract descriptions which have actually been consolidated. (Use reverse side of this form if necessary.) _____

No allowable will be assigned to the well until all interests have been consolidated (by communitization, unitization, forced-pooling, or otherwise) or until a non-standard unit, eliminating such interests, has been approved by the Commission.



CERTIFICATION

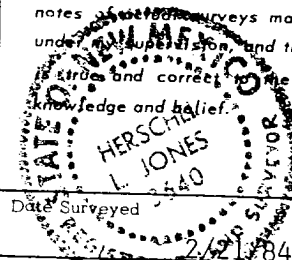
I hereby certify that the information contained herein is true and complete to the best of my knowledge and belief.

Gliserio Rodriguez
Name
Gliserio Rodriguez

Position
Regulatory Agent
Company
Yates Petroleum Corp.

Date
3/1/84

I hereby certify that the well location shown on this plat was plotted from field notes, and that the same is true and correct to the best of my knowledge and belief.

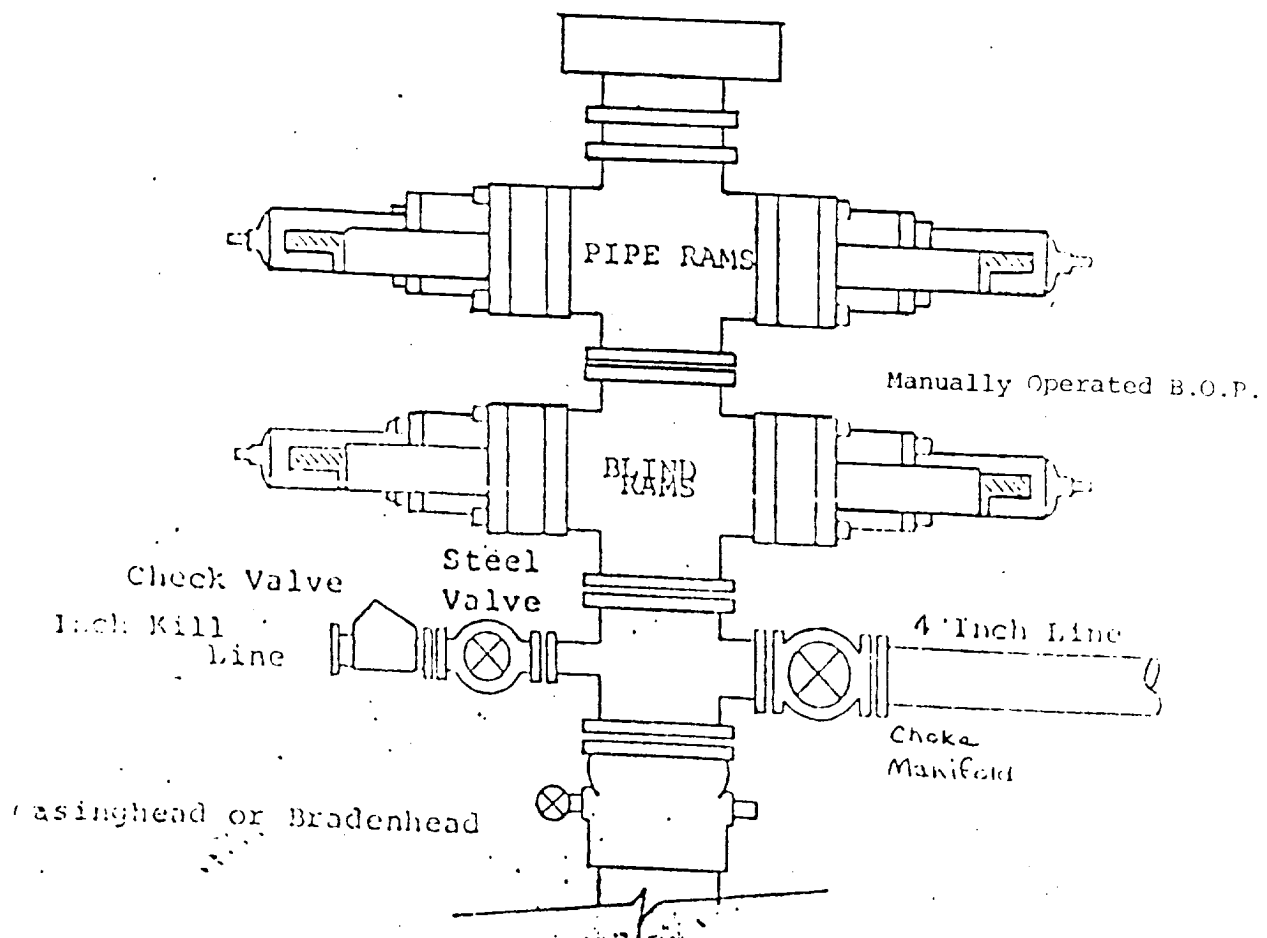


Date Surveyed
2/29/84
Registered Professional Engineer and/or Land Surveyor

L. Jones
Certificate No.
3640

0 330 660 990 1320 1650 1980 2310 2640 2970 3300 3630 3960 4290 4620 4950 5280 5610 5940 6270 6600

EXHIBIT B
BOP DIAGRAM
RATED 3000[#]



YATES PETROLEUM CORPORATION
Cleary "ZE" Federal #1
2310' FNL and 330' FEL
Section 24-T7S-R29E

In conjunction with Form 9-331C, Application for Permit to Drill subject well, Yates Petroleum Corporation submits the following ten items of pertinent information in accordance with BLM requirements.

1. The geologic surface formation is sandy alluvium.
2. The estimated tops of geologic markers are as follows:

San Andres	2447'
P1 Porosity	3091'
P2 Porosity	3170'
P3 Porosity	3287'
P3 Limestone	3392'
TD	3475'
3. The estimated depths at which anticipated water, oil or gas formations are expected to be encountered:

Water: appr. 150-300'

Oil or Gas: 3250'
4. Proposed Casing Program: See Form 9-331C.
5. Pressure Control Equipment: See Form 9-331C.
6. Mud Program: See Form 9-331C.
7. Auxiliary Equipment: Kelly Cock; pit level indicators and flow sensor equipment; sub with full-opening valve on floor, drill pipe connection.
8. Testing, Logging and Coring Program:

Samples: Surface casing to TD.

DST's: As warranted.

Coring: None anticipated.

Logging: CNL-FDC TD to csg w/GR-CNL to surface & DLL from TD to csg.
9. No abnormal pressures or temperatures are anticipated.
10. Anticipated starting date: As soon as possible after approval.

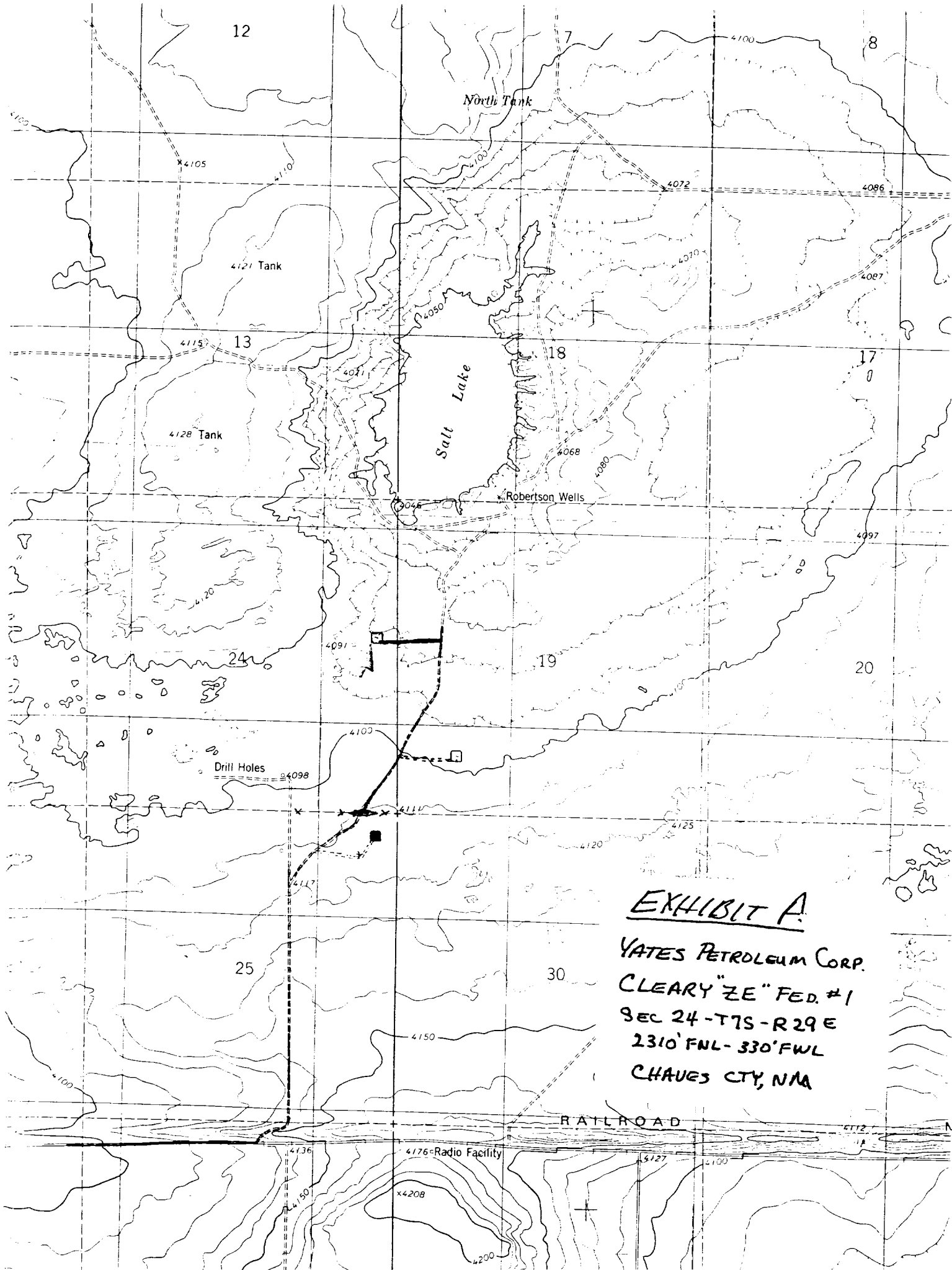
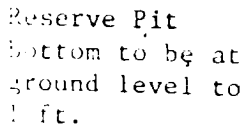


EXHIBIT A.

YATES PETROLEUM CORP.
CLEARLY "ZE" FED. #1
SEC 24-T7S-R29E
2310' FNL-330' FWL
CHAVES CTY, N.M.

YATES PETROLEUM CORP.
Exhibit C



NOTE:

Inside walls must be as high and wide as outer walls of pit.

