

30-005-62154

UNITED STATES
DEPARTMENT OF THE INTERIOR
GEOLOGICAL SURVEY

APPLICATION FOR PERMIT TO DRILL, DEEPEN, OR PLUG BACK

1a. TYPE OF WORK DRILL <input checked="" type="checkbox"/> DEEPEN <input type="checkbox"/> PLUG BACK <input type="checkbox"/>			5. LEASE DESIGNATION AND SERIAL NO. NM 18489		
b. TYPE OF WELL OIL WELL <input type="checkbox"/> GAS WELL <input checked="" type="checkbox"/> OTHER <input type="checkbox"/>			6. IF INDIAN, ALLOTTEE OR TRIBE NAME ---		
2. NAME OF OPERATOR PETROLEUM DEVELOPMENT CORPORATION			7. UNIT AGREEMENT NAME ---		
3. ADDRESS OF OPERATOR 9720-B Candelaria Rd., NE., Albuquerque, New Mexico 87112			8. FARM OR LEASE NAME Isler-Pennzoil Federal		
4. LOCATION OF WELL (Report location clearly and in accordance with any State requirements.)* At surface 1980' FNL 660' FWL Sec. 3, T7S, R26E At proposed prod. zone Same			9. WELL NO. #3		
14. DISTANCE IN MILES AND DIRECTION FROM NEAREST TOWN OR POST OFFICE* 30 miles northeast of Roswell, New Mexico			10. FIELD AND POOL OR WILDCAT Pecos River Undesignated - Abo		
15. DISTANCE FROM PROPOSED* LOCATION TO NEAREST PROPERTY OR LEASE LINE, FT. (Also to nearest drilg. unit line, if any) 660'		16. NO. OF ACRES IN LEASE 999.63		17. NO. OF ACRES ASSIGNED TO THIS WELL 160	
18. DISTANCE FROM PROPOSED LOCATION* TO NEAREST WELL, DRILLING, COMPLETED, OR APPLIED FOR, ON THIS LEASE, FT. None		19. PROPOSED DEPTH 4650' Abo		20. ROTARY OR CABLE TOOLS Rotary	
21. ELEVATIONS (Show whether DF, RT, GR, etc.) 3696' GL			22. APPROX. DATE WORK WILL START* 4-30-84		

23. PROPOSED CASING AND CEMENTING PROGRAM

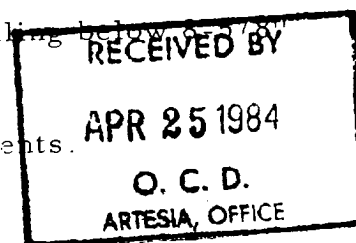
SIZE OF HOLE	SIZE OF CASING	WEIGHT PER FOOT	SETTING DEPTH	QUANTITY OF CEMENT
12-1/4"	8-5/8"	24.0# J-55	850'	400 sx. circulate to surface
7-7/8"	4-1/2"	9.5# J-55	TD	350 sxs. Cement from shoe to 200' above Abo, & 400 sxs. for surface tie in.

Propose to drill to about 4650' to test Abo and intermediate formations. W.O.C. 18 hrs. 4-1/2" casing will be set thru any commercial zone. Complete by perforating and treating favorable zones as needed.

A 3000# double ram BOP will be installed and tested before drilling below 5-7/8" casing. Test BOP rams daily.

See attached "Supplemental Drilling Data" and NTL-6 requirements.

Gas is not dedicated to a pipeline.



IN ABOVE SPACE DESCRIBE PROPOSED PROGRAM: If proposal is to deepen or plug back, give data on present productive zone and proposed new productive zone. If proposal is to drill or deepen directionally, give pertinent data on subsurface locations and measured and true vertical depths. Give blowout preventer program, if any.

24. SIGNED Gary L. Roberts TITLE Operations Manager DATE April 17, 1984
(This space for Federal or State office use)

PERMIT NO. _____ APPROVAL DATE _____
APPROVED BY S/ Levi Deike, Acting TITLE Area Manager DATE 4-24-84
CONDITIONS OF APPROVAL, IF ANY: _____

Post. & Rd.
2D-1-2-7-84
4-27-84

WATER CONSERVATION DIVISION

STATE OF NEW MEXICO
ENERGY AND MINERALS DEPARTMENT

P. O. BOX 2088
SANTA FE, NEW MEXICO 87501

Form C-102
Revised 10-1-78

All distances must be from the outer boundaries of the Section.

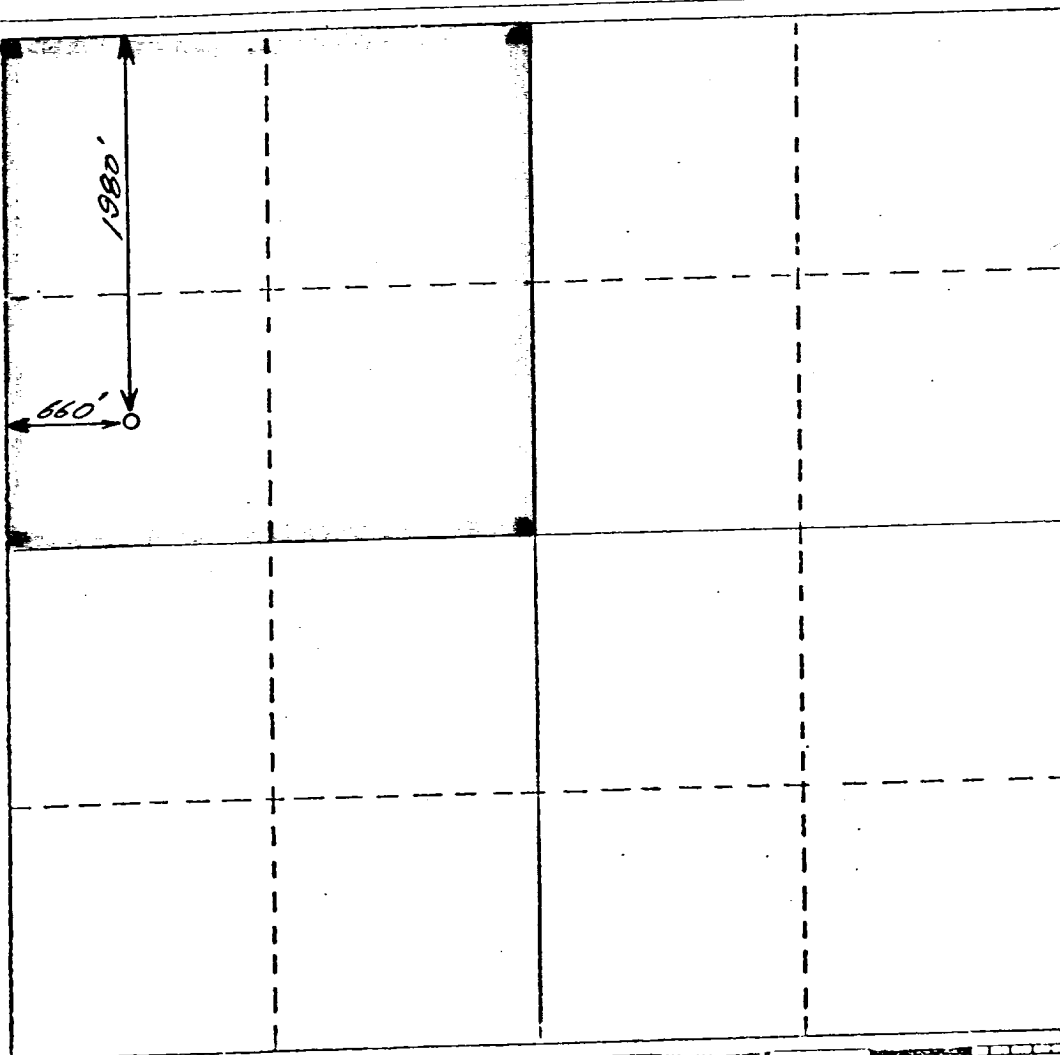
Operator Petroleum Development Corporation			Lease Isler-Pennzoil		Well No. 3
Unit Letter E	Section 3	Township 7 South	Range 26 East	County Chaves	
Actual Footage Location of Well: <div> <div>1980</div> <div>feet from the</div> <div>North</div> <div>line and</div> <div>660</div> <div>feet from the</div> <div>West</div> <div>line</div> </div>					
Ground Level Elev. 3696	Producing Formation ABO		Pool Undesignated ABO		Dedicated Acreage: 160 Acres

1. Outline the acreage dedicated to the subject well by colored pencil or hachure marks on the plat below.
2. If more than one lease is dedicated to the well, outline each and identify the ownership thereof (both as to working interest and royalty).
3. If more than one lease of different ownership is dedicated to the well, have the interests of all owners been consolidated by communitization, unitization, force-pooling, etc?

☐ Yes ☐ No If answer is "yes," type of consolidation _____

If answer is "no," list the owners and tract descriptions which have actually been consolidated. (Use reverse side of this form if necessary.) _____

No allowable will be assigned to the well until all interests have been consolidated (by communitization, unitization, forced-pooling, or otherwise) or until a non-standard unit, eliminating such interests, has been approved by the Division.



CERTIFICATION

I hereby certify that the information contained herein is true and complete to the best of my knowledge and belief.

Name

Gary L. Roberts

Position

Operations Manager

Company

Petroleum Development Corp.

Date

April 10, 1984

I hereby certify that the well location shown on this plat was plotted from field notes of actual surveys made by me or under my supervision, and that the same is true and correct to the best of my knowledge and belief.

April 9, 1984

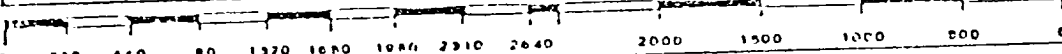
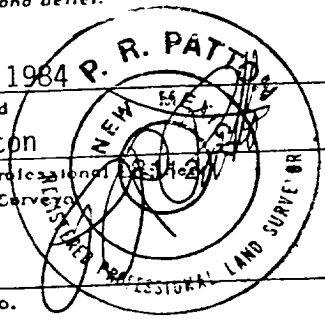
Date Surveyed

P.R. Patton

Registered Professional
and/or Land Surveyor

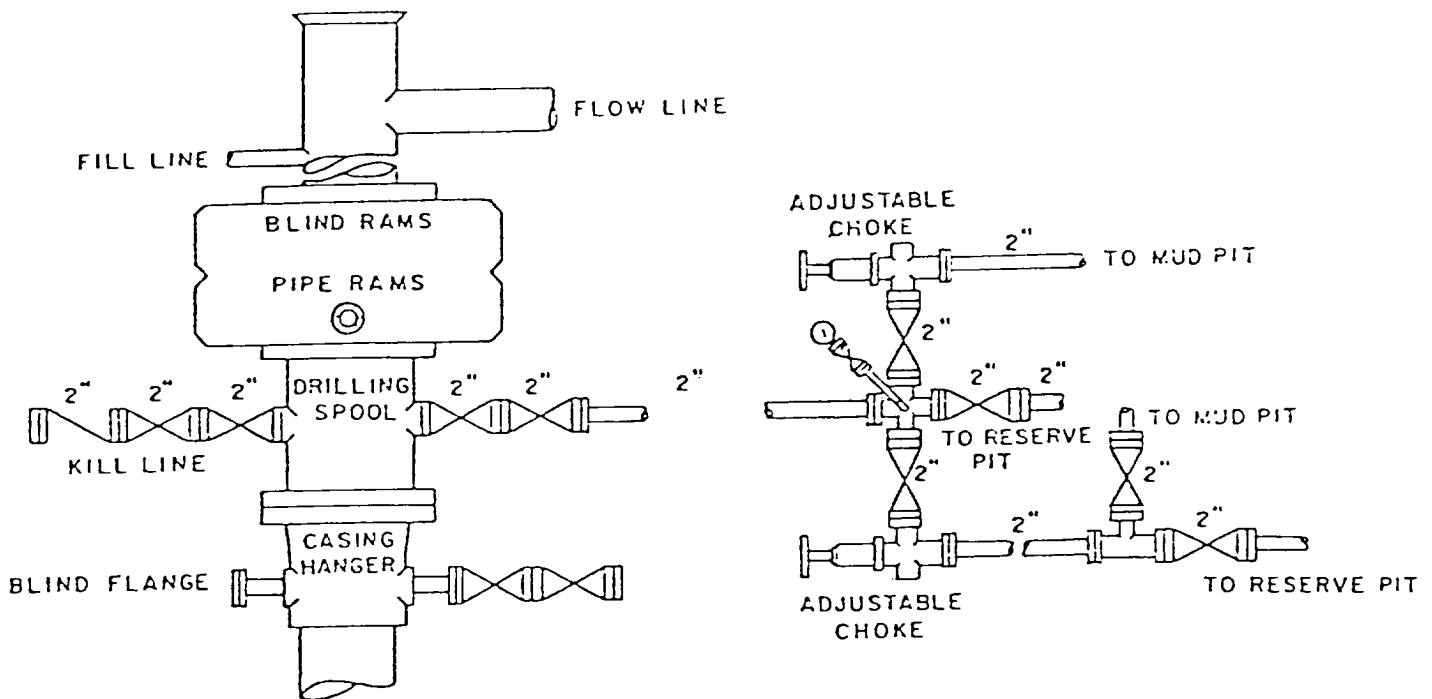
8112

Certificate No.



Petroleum Development Corp.
Isler-Pennzoil Federal #3
SW/4NW/4, Sec. 3, T7S, R26E
Chaves County, New Mexico

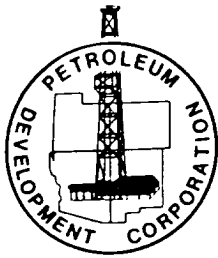
NM 18489



BOP DIAGRAM

3000# Working Pressure
Rams Operated Daily

EXHIBIT D



PETROLEUM DEVELOPMENT CORPORATION

9720-B CANDELARIA, NE
ALBUQUERQUE, NEW MEXICO 87112
TELEPHONE (505) 293-4044

SUPPLEMENTAL DRILLING DATA

PETROLEUM DEVELOPMENT CORPORATION

Isler - Pennzoil Federal #3
SW/4NW/4, Sec. 3, T7S, R26E
Chaves County, New Mexico

NM 18489

The following items supplement Form 9-331C in accordance with instructions contained in NTL-6.

1. SURFACE FORMATION: Seven Rivers of Permian System

2. ESTIMATED TOPS OF GEOLOGIC MARKERS:

San Andres	-	700'
Glorieta	-	1,460'
Tubb	-	2,880'
Abo	-	4,000'

3. ESTIMATED DEPTHS TO WATER, OIL OR GAS FORMATION:

Water	-	100'
Oil	-	750'
Gas	-	4,000'

4. PROPOSED CASING PROGRAM:

8-5/8" Casing	-	850' of 24.0#, J-55, Surface casing cemented to surface.
4-1/2" Casing	-	4,650' of 9.5#, J-55, Production casing cemented from shoe to 200' above top of Abo.
		Cement across 8-5/8" shoe.

5. PRESSURE CONTROL EQUIPMENT: BOP stack will consist of at least a double ram blowout preventer rated to 3000# WP. BOP will be installed and casing tested to 1200 psi. prior to drilling cement out of 8-5/8" shoe. The pressure control system will include choke, kill and fill lines.

EIGHTMILE DRAW QU
NEW MEXICO-CHAV
7.5 MINUTE SERIES (TOP

Petroleum Development Corp.
Isler-Pennzoil Federal #3
SW/4NW/4, Sec. 3, T7S, R26E
Chaves County, New Mexico

R 26 E

NM 18489

1/4 MI 5000 FEET

35°

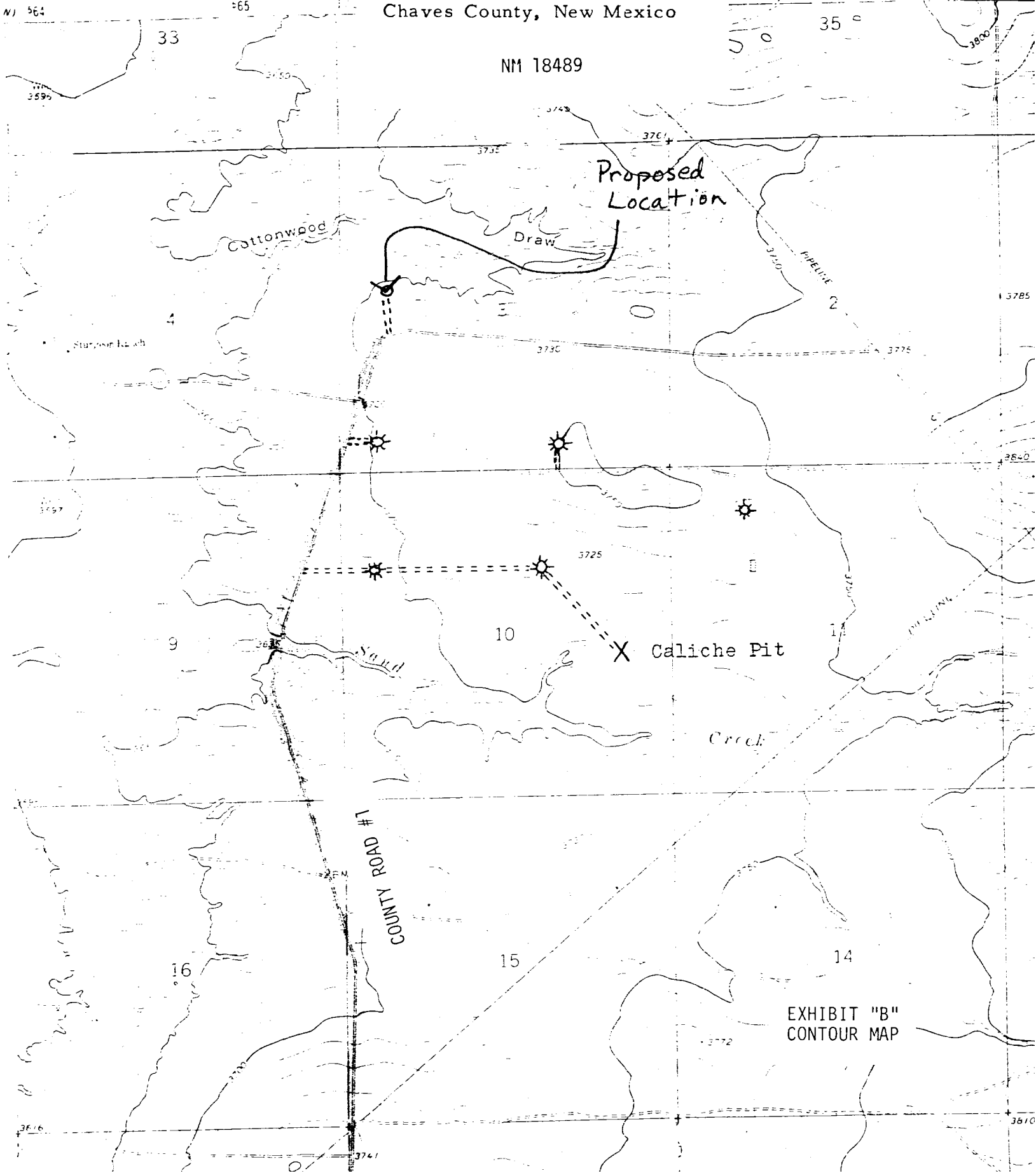
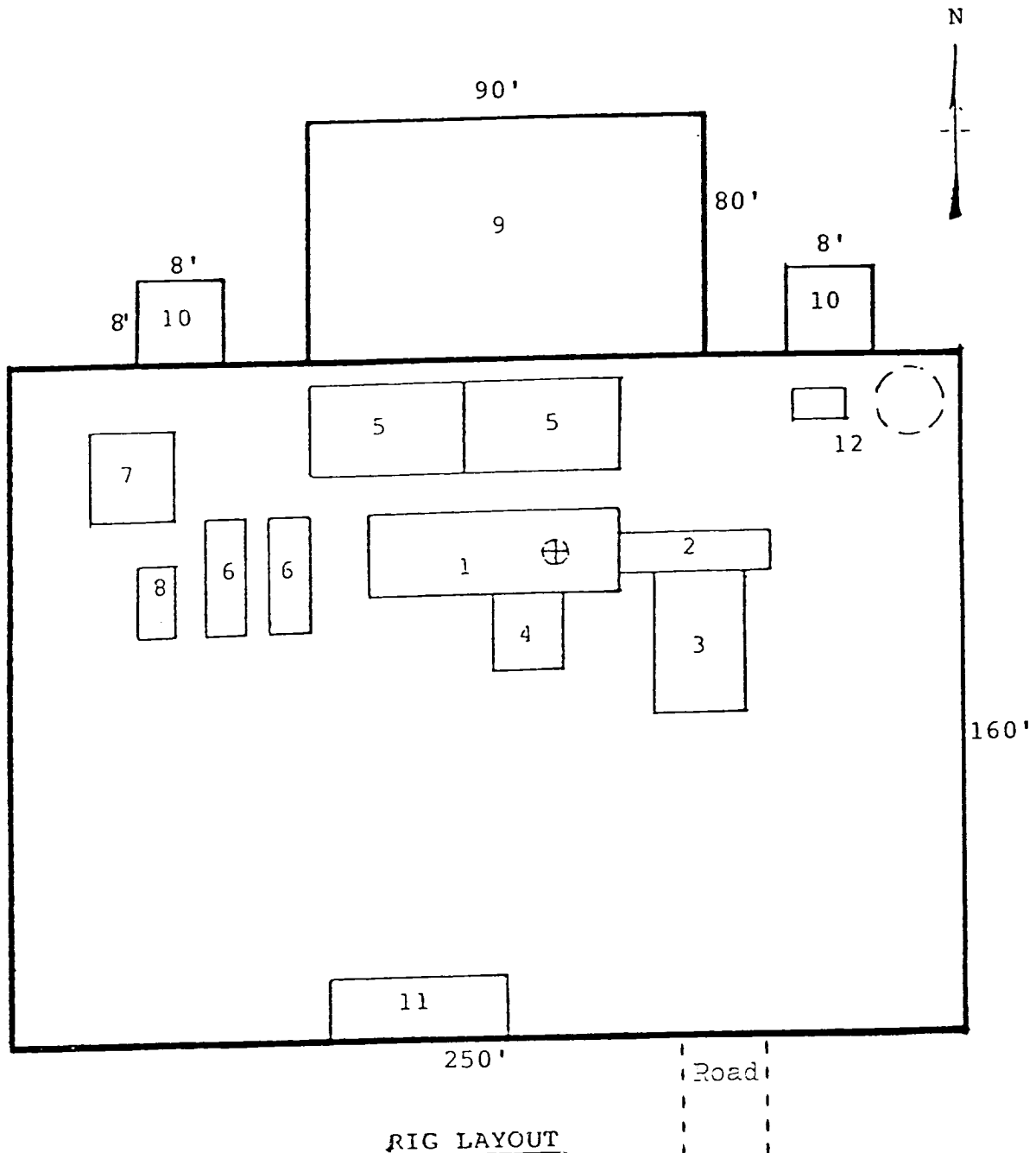


EXHIBIT "B"
CONTOUR MAP

Petroleum Development Corp.
 Isler-Pennzoil Federal #3
 SW/4NW/4, Sec. 3, T7S, R26E
 Chaves County, New Mexico

NM 18489



RIG LAYOUT

- | | |
|-----------------|---------------------------|
| 1. Substructure | 7. Water Tank |
| 2. Catwalk | 8. Light Plant |
| 3. Pipe Rack | 9. Reserve Pit |
| 4. Doghouse | 10. Trash Pit |
| 5. Mud Pits | 11. Trailer House |
| 6. Mud Pumps | 12. Production Facilities |