

RECEIVED BY

CONS. COMMISSION
SUBMIT IN PLICATE*Form approved.
Budget Bureau No. 42-R1425.UNITED STATES
DEPARTMENT OF THE INTERIOR

GEOLOGICAL SURVEY

APPLICATION FOR PERMIT TO DRILL, DEEPEN, OR PLUG BACK

1a. TYPE OF WORK

DRILL ☒DEEPEN ☐PLUG BACK ☐

b. TYPE OF WELL

OIL
WELL ☐GAS
WELL ☒

OTHER

SINGLE
ZONE ☐MULTIPLE
ZONE ☐

2. NAME OF OPERATOR

McCLELLAN OIL CORPORATION

3. ADDRESS OF OPERATOR

P.O. Drawer 730, Roswell, NM 88202

4. LOCATION OF WELL (Report location clearly and in accordance with any State requirements.)*

At surface

760' FNL & 1980' FWL

At proposed prod. zone

14. DISTANCE IN MILES AND DIRECTION FROM NEAREST TOWN OR POST OFFICE*

25 miles North & 13 miles East of Roswell, NM

15. DISTANCE FROM PROPOSED*

LOCATION TO NEAREST

PROPERTY OR LEASE LINE, FT.

(Also to nearest drlg. unit line, if any)

760'

16. NO. OF ACRES IN LEASE

2441.49

17. NO. OF ACRES ASSIGNED
TO THIS WELL

160

18. DISTANCE FROM PROPOSED LOCATION*

TO NEAREST WELL, DRILLING, COMPLETED,
OR APPLIED FOR, ON THIS LEASE, FT.

3961'

19. PROPOSED DEPTH

4300'

20. ROTARY OR CABLE TOOLS

Rotary

21. ELEVATIONS (Show whether DF, RT, GR, etc.)

3812' G. L.

22. APPROX. DATE WORK WILL START*

June 1, 1984

23.

PROPOSED CASING AND CEMENTING PROGRAM

SIZE OF HOLE	SIZE OF CASING	WEIGHT PER FOOT	SETTING DEPTH	QUANTITY OF CEMENT
17-1/2"	13-3/8"	48	40'	6 yards
12-1/4"	8-5/8"	23	1000'	250 sx (circulated)
7-7/8"	4-1/2"	10.5	4300'	350 sx

Proposed to drill and test the Abo formation. Approximately 1000' of surface casing. will be set and cement circulated. If production is indicated, will run production casing and attempt completion.

Geological Tops: San Andres - 600' Tubb - 2901'
Gloreita - 1508' Abo - 3650'

Mud Program: Fresh water to top of Abo. Will mud up with 15cc water loss, 35 visc. mud and 9.6-9.8 lb/gal wt.

Gas is not dedicated.

IN ABOVE SPACE DESCRIBE PROPOSED PROGRAM: If proposal is to deepen or plug back, give data on present productive zone and proposed new productive zone. If proposal is to drill or deepen directionally, give pertinent data on subsurface locations and measured and true vertical depths. Give blowout preventer program, if any.

24.

SIGNED Mark McClellanTITLE GeologistDATE 5/4/84

(This space for Federal or State office use)

PERMIT NO. _____

APPROVAL DATE _____

APPROVED BY Phil A. WirtzTITLE Area ManagerDATE 5-16-84

CONDITIONS OF APPROVAL, IF ANY:

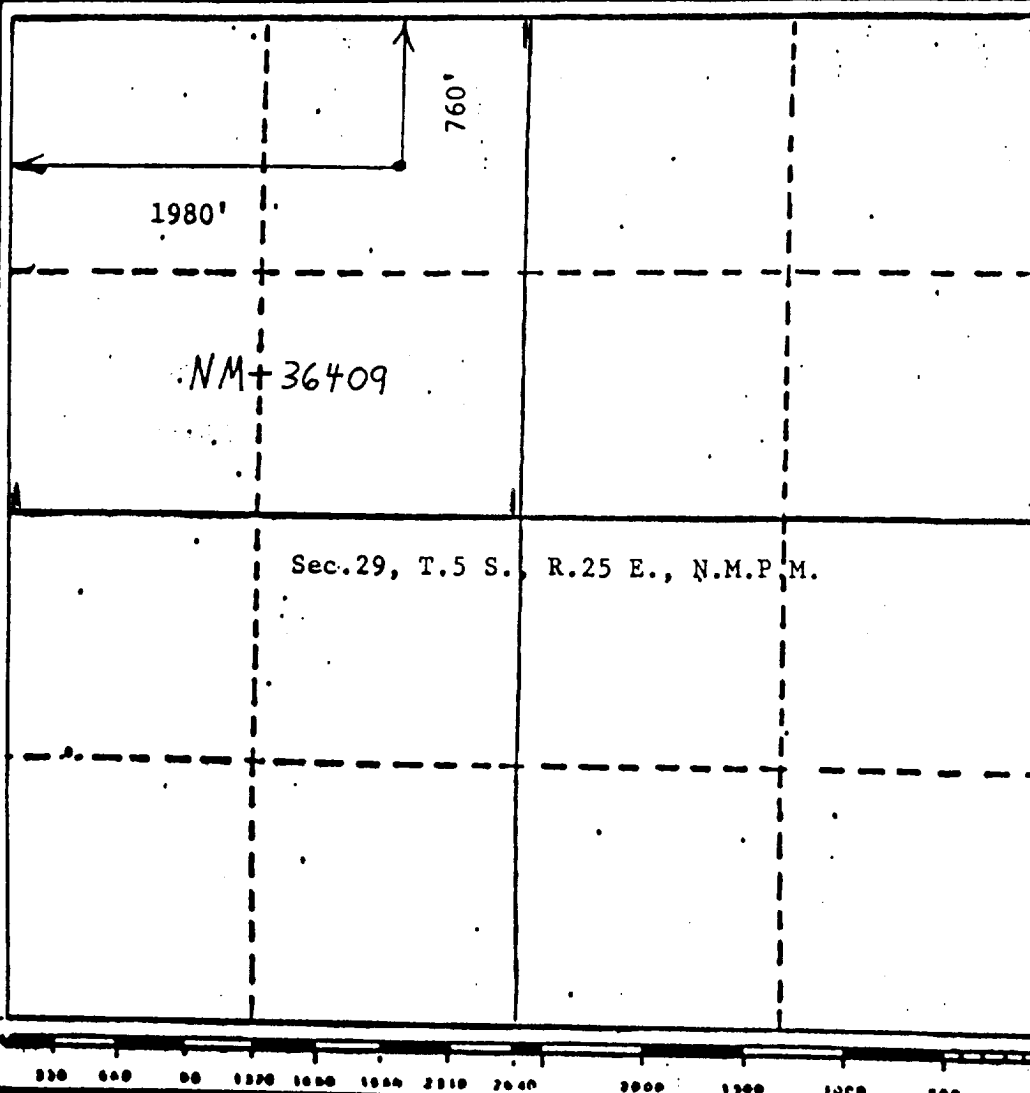
*See Instructions On Reverse Side

West. Abo
10-1-76
5-25-84

Operator McClellan Oil Corp.		Lease MOC Federal		Well No. #7
Unit Letter C	Section 29	Township 5 South	Range 25 East	County Chaves
Actual Postage Location of Wells				
760 feet from the North line and 1980 feet from the West line				
Ground Level Elev. 3812	Producing Formation Abo	Pool Pecos Slope Abo		Dedicated Acres 160

- ☐ Yes ☐ No If answer is "yes," type of consolidation

No allowable will be assigned to the well until all interests have been consolidated (by communitization, unitization, forced-pooling, or otherwise) or until a non-standard unit, eliminating such interests, has been approved by the Division.



I hereby certify that the information contained herein is true and complete to the best of my knowledge and belief.

Mark McCellar

Name Mark McClellan

Position Geologist

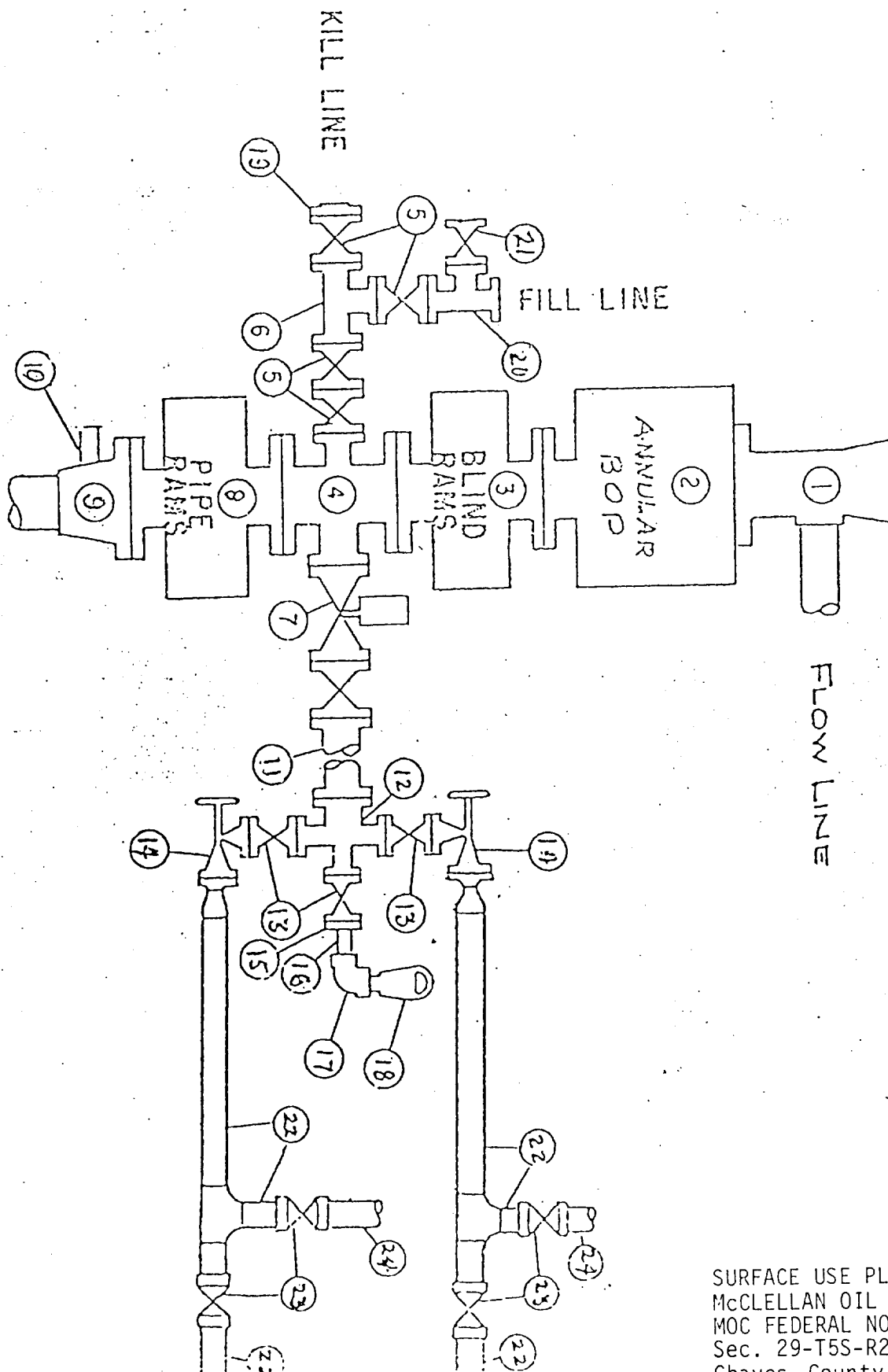
Company McClellan Oil Corp.

Date 5/3/84

I hereby certify that the well location shown on this plot was plotted from field notes of actual surveys made by me or under my supervision, and that the same is true and correct to the best of my knowledge and belief.

Date Entered
April 27 1984
Horticulture Division
and/or Land Survey
6290
NEW MEXICO
SURVEY
L. & L. S.
6290

BLOWOUT PREVENTER SPECIFICATION



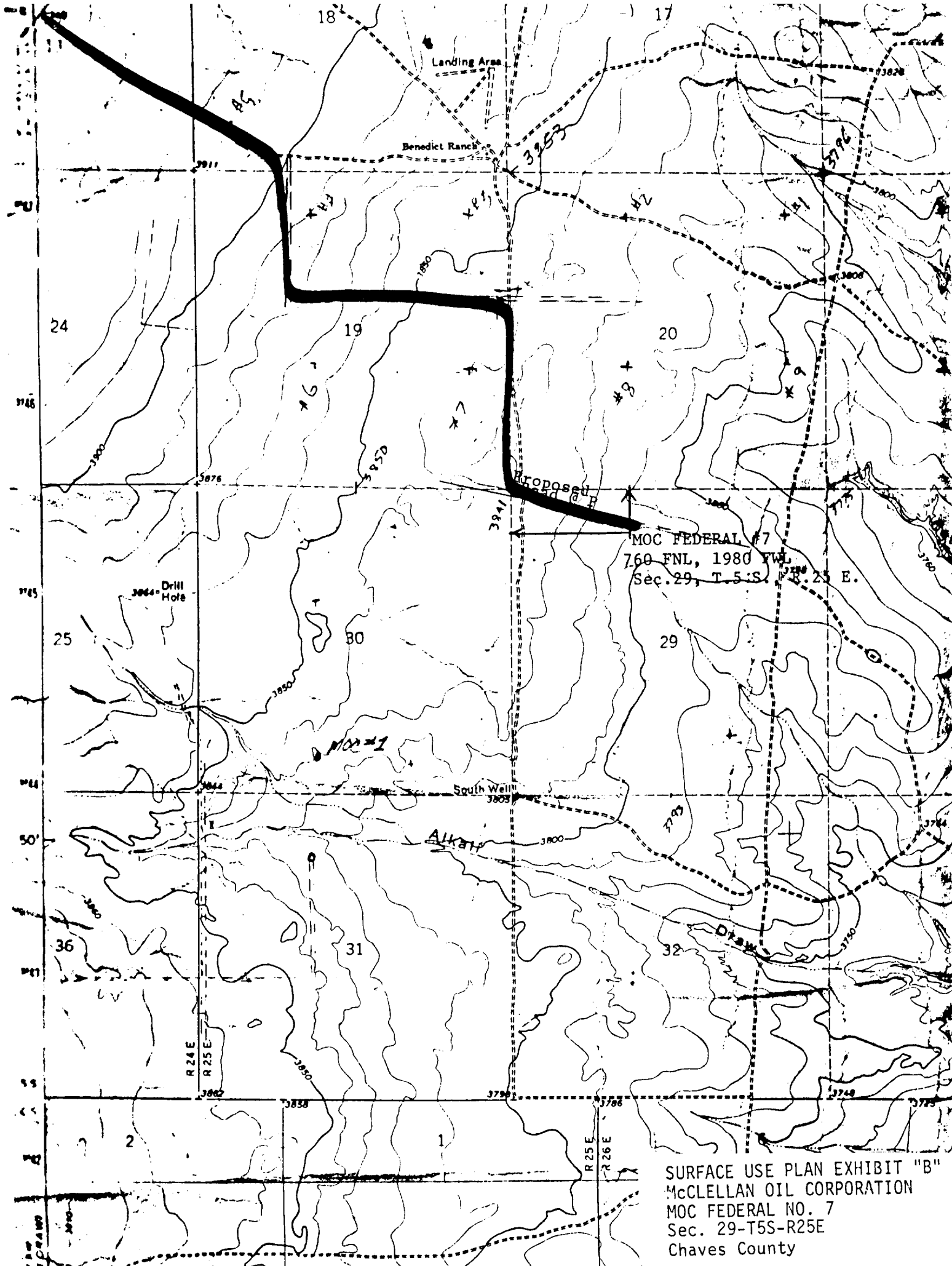
SURFACE USE PLAN EXHIBIT "E"
 McCLELLAN OIL CORPORATION
 MOC FEDERAL NO. 7
 Sec. 29-T5S-R25E
 Chaves County

REQUIREMENTS
(NTL-6)

1. Location: Sec. 29-T5S-R25E, 760' FNL & 1980' FWL
2. Elevation: 3812' G. L.
3. Geologic name of surface formation: See archaeological report
4. Type of drilling rig and associated equipment: Rotary
5. Proposed drilling depth and objective formation: 4300', Abo
6. Estimated tops of geologic markers:

Yates _____	San Andres <u>600'</u>	Abo <u>3650'</u>
7-Rivers _____	Glorieta <u>1508'</u>	Wolfcamp _____
Queen _____	Tubb <u>2901'</u>	_____
7. Estimated depths of any oil, water, or gas: Possible gas: 3650'-4300'
- 8-9. Proposed casing program:

<u>13-3/8"</u>	@ <u>40'</u>	Grade <u>H-40</u>	Wt. <u>48</u>	Type Cement <u>6 yards</u>
<u>8-5/8"</u>	@ <u>1000'</u>	Grade <u>J-55</u>	Wt. <u>23</u>	Type Cement <u>Class "C" (circulate)</u>
<u>4-1/2"</u>	@ <u>4300'</u>	Grade <u>J-55</u>	Wt. <u>10.5</u>	Type Cement <u>Class "C"</u>
10. Specifications for pressure control equipment and testing procedures: Schaeffer Model 39 (4500 psi test). See Exhibit "E".
11. Type and characteristics of drilling fluids: Fresh water and native mud to top of Abo. Mud up 100' above Abo with 15cc water loss 35 Visc and 9.6 lb/gal Mud.
12. Testing, logging, and coring programs: Compensated Neutron - Litho Density Tool, Dual Laterolog Micro SFL, Gamma ray logs.
13. Anticipated abnormal pressures or temperature: None anticipated
14. Anticipated commencement and completion date: 6-1-84 to 6-20-84
15. Other pertinent information: None



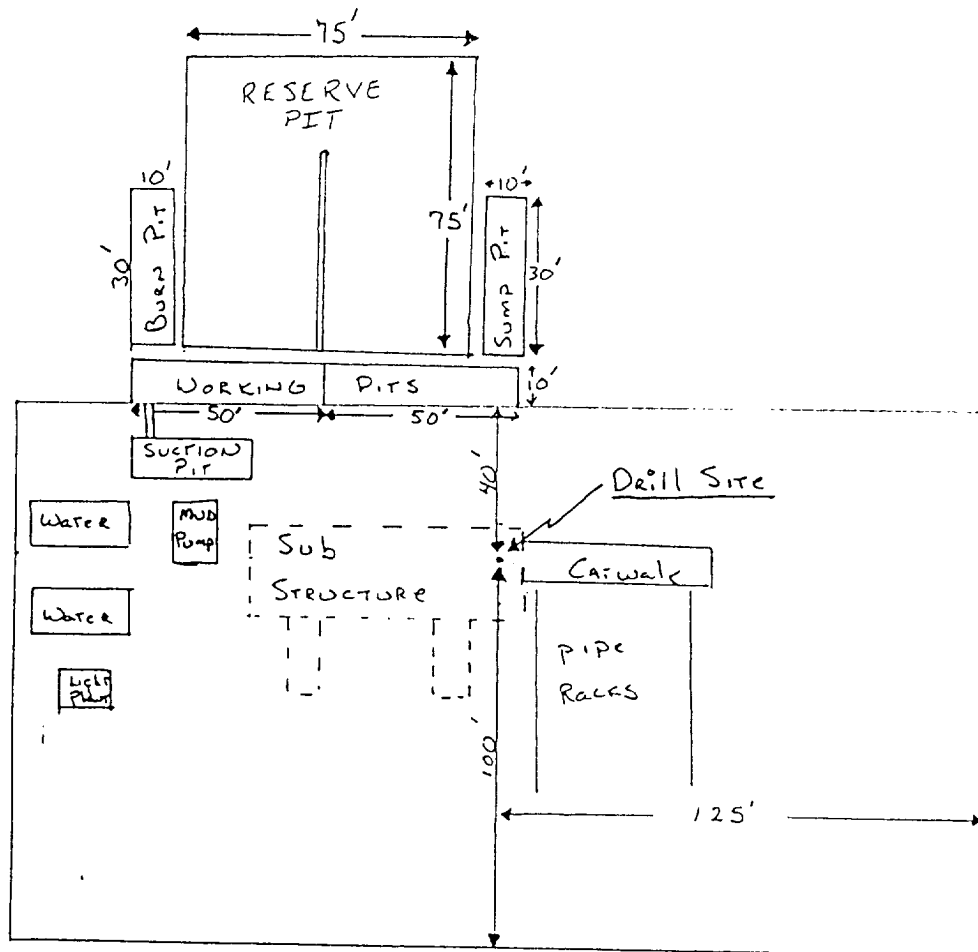
SURFACE USE PLAN EXHIBIT "B"
McCLELLAN OIL CORPORATION
MOC FEDERAL NO. 7
Sec. 29-T5S-R25E
Chaves County

McCLELLAN OIL CORPORATION
SUGGESTED PAD DIMENSIONS

Reserve Pits 4 ft. deep, plastic lined

Working pits 5 ft. deep

No cellar



Scale 1" = 50'

SURFACE USE PLAN EXHIBIT "D"
McCLELLAN OIL CORPORATION
MOC FEDERAL NO. 7
Sec. 29-T5S-R25E
Chaves County