

NO. OF COPIES RECEIVED	
DISTRIBUTION	
SANTA FE	✓
FILE	✓
U.S.G.S.	2
LAND OFFICE	
OPERATOR	✓

P. O. BOX 2088
SANTA FE, NEW MEXICO 87501RECEIVED BY
JUN 05 1984
O.C.D.
MINERALS OFFICE

5. Indicate Type of Lease
STATE <input type="checkbox"/> FEE <input checked="" type="checkbox"/>
6. State Oil & Gas Lease No.

APPLICATION FOR PERMIT TO DRILL, DEEPEN, OR PLUG BACK

1a. Type of Work

DRILL ☒DEEPEN ☐PLUG BACK ☐

b. Type of Well

OIL WELL ☒GAS WELL ☐

OTHER

SINGLE ZONE ☐MULTIPLE ZONE ☐

2. Name of Operator

Yates Petroleum Corporation

3. Address of Operator

207 S. 4th, Artesia, New Mexico 88210

4. Location of Well

UNIT LETTER N LOCATED 660 FEET FROM THE South LINE

AND 1980 FEET FROM THE West LINE OF SEC. 8 TWP. 8S RGE. 26E NMPM

7. Unit Agreement Name
8. Farm or Lease Name
Byers "ZV"
9. Well No.
1
10. Field and Pool, or Wildcat
Wildcat -
11. County
Chaves

12. Elevations (show whether DF, RT, etc.)	21A. Kind & Status Plug. Bond	21B. Drilling Contractor	22. Approx. Date Work will start
3699' GL	Blanket	Landis Rig #4	ASAP

23.

PROPOSED CASING AND CEMENT PROGRAM

SIZE OF HOLE	SIZE OF CASING	WEIGHT PER FOOT	SETTING DEPTH	SACKS OF CEMENT	EST. TOP
14 3/4"	10 3/4"	40.5# J-55	950'	700 sx	circulated
7 7/8"	4 1/2"	9.5# J-55	TD	350 sx	

We propose to drill and test the Ellenburger and intermediate formations. Approximately 950' of surface casing will be set and cement circulated to shut off gravel and caving. If needed (lost circulation) 8 5/8" intermediate casing will be run to 1500' and cemented with enough cement calculated to tie back into the surface casing. If commercial, production casing will be run and cemented with adequate cover, perforated and stimulated as needed for production.

MUD PROGRAM: FW gel/LCM to 950', Brine to 4000', pre-hybentonite/starch to TD.

BOP PROGRAM: BOP's will be installed at the offset and tested daily.

APPROVAL VALID FOR 180 DAYS
PERMIT EXPIRES 12-8-84
UNLESS DRILLING UNDERWAY

IN ABOVE SPACE DESCRIBE PROPOSED PROGRAM; IF PROPOSAL IS TO DEEPEN OR PLUG BACK, GIVE DATA ON PRESENT PRODUCTIVE ZONE AND PROPOSED NEW PRODUCTIVE ZONE. GIVE BLOWOUT PREVENTER PROGRAM, IF ANY.

I hereby certify that the information above is true and complete to the best of my knowledge and belief.

Signed Glenn K. [Signature] Title Regulatory Agent Date 6/1/84

(This space for State Use)

APPROVED BY [Signature] TITLE OIL AND GAS INSPECTOR DATE JUN 08 1984

CONDITIONS OF APPROVAL, IF ANY:

Post. OK
JB-107/B6
6-8-84

NEW MEXICO OIL CONSERVATION COMMISSION
WELL LOCATION AND ACREAGE DEDICATION PLAT

Form C-102
Supersedes C-128
Effective 1-1-65

All distances must be from the outer boundaries of the Section.

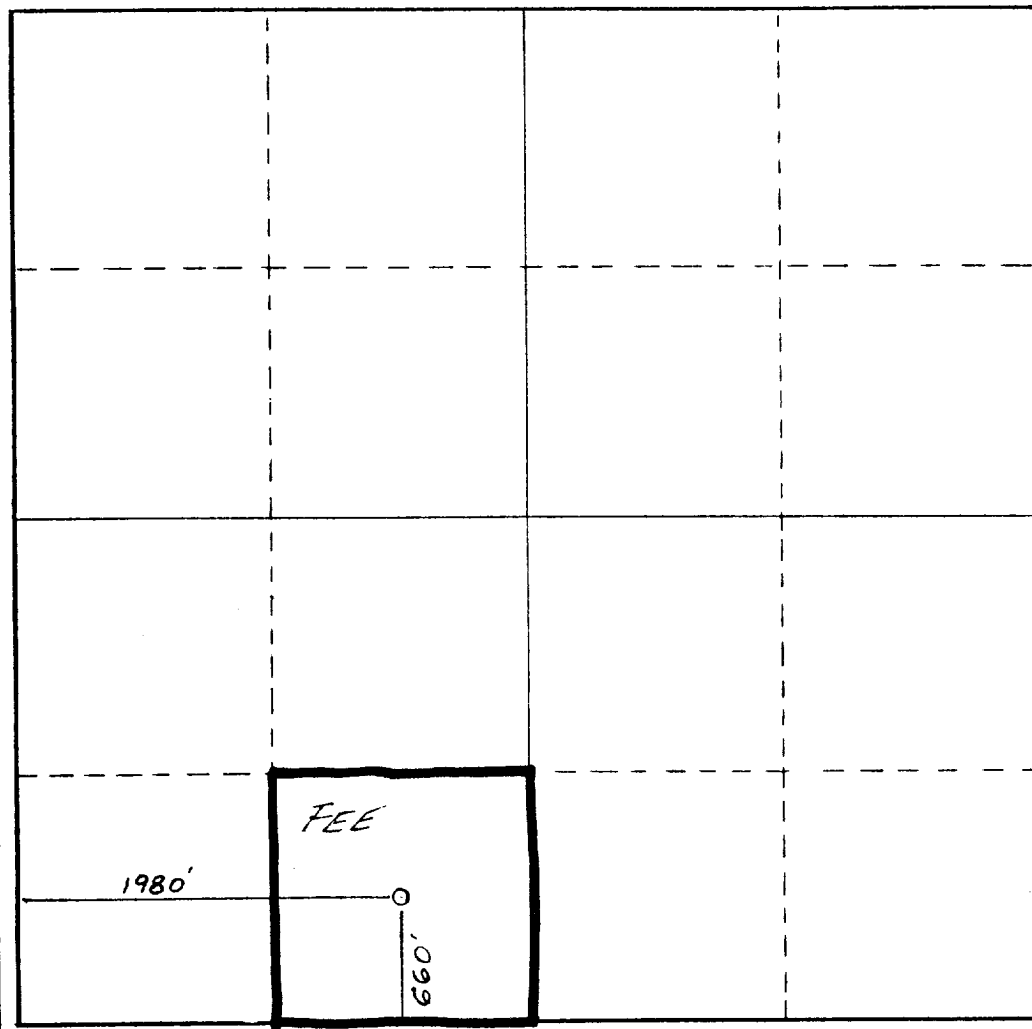
Operator YATES PETROLEUM CORPORATION			Lease Byers ZV		Well No. 1
Unit Letter N	Section 8	Township 8 South	Range 26 East	County Chaves	
Actual Footage Location of Well: 660 feet from the South line and 1980 feet from the West line					
Ground Level Elev. 3699.	Producing Formation ELLENBURGER		Pool WILDCAT		Dedicated Acreage: 40 Acres

1. Outline the acreage dedicated to the subject well by colored pencil or hachure marks on the plat below.
2. If more than one lease is dedicated to the well, outline each and identify the ownership thereof (both as to working interest and royalty).
3. If more than one lease of different ownership is dedicated to the well, have the interests of all owners been consolidated by communitization, unitization, force-pooling, etc?

☐ Yes ☐ No If answer is "yes," type of consolidation _____

If answer is "no," list the owners and tract descriptions which have actually been consolidated. (Use reverse side of this form if necessary.) _____

No allowable will be assigned to the well until all interests have been consolidated (by communitization, unitization, forced-pooling, or otherwise) or until a non-standard unit, eliminating such interests, has been approved by the Commission.



CERTIFICATION

I hereby certify that the information contained herein is true and complete to the best of my knowledge and belief.

Gliserio Rodriguez
Name
GLISERIO RODRIGUEZ

Position
REG. AGT.

Company
YATES PET. CORP.

Date
6-1-84

DAN R. REDDY
NEW MEXICO
I hereby certify that the well location shown on this plat was plotted from field notes of actual surveys made by me or under my supervision, and that the same are true and correct to the best of my knowledge and belief.
REGISTERED PROFESSIONAL ENGINEER

Date Surveyed
May 31, 1984

Registered Professional Engineer and/or Land Surveyor

Dan R. Reddy
Certificate No.

NM PE&LS #5412

EXHIBIT B

BDP DIAGRAM

RATED 3000[#]

