

RECEIVED BY

Drew DD

Artesia, NM 88210

JUN 11 1984

UNITED STATES
DEPARTMENT OF THE INTERIOR
ARTESIA OFFICE
GEOLOGICAL SURVEYSUBMIT IN TRIPLICATE*
(Other instructions on
reverse side)Form approved.
Budget Bureau No. 42-R1425.

30-005-62163

5. LEASE DESIGNATION AND SERIAL NO.

NM-21494

6. IF INDIAN, ALLOTTEE OR TRIBE NAME

7. UNIT AGREEMENT NAME

8. FARM OR LEASE NAME

Wanda "ZT" Federal

9. WELL NO.

10. FIELD AND POOL, OR WILDCAT

Reco's Slope Abo

11. SEC., T., R., M., OR BLM.
AND SURVEY OR AREA

Sec. 31-T10S-R26E

12. COUNTY OR PARISH 13. STATE

Chaves

NM

APPLICATION FOR PERMIT TO DRILL, DEEPEN, OR PLUG BACK

1a. TYPE OF WORK

DRILL ☒DEEPEN ☐PLUG BACK ☐

b. TYPE OF WELL

OIL
WELL ☐GAS
WELL ☒

OTHER

SINGLE
ZONE ☐MULTIPLE
ZONE ☐

2. NAME OF OPERATOR

Yates Petroleum Corporation

3. ADDRESS OF OPERATOR

207 S. 4th, Artesia, New Mexico 88210

4. LOCATION OF WELL (Report location clearly and in accordance with any State requirements.)*

At surface

1980' FNL and 660' FWL

At proposed prod. zone

same

14. DISTANCE IN MILES AND DIRECTION FROM NEAREST TOWN OR POST OFFICE*

Approximately 10 miles east of Roswell, New Mexico.

15. DISTANCE FROM PROPOSED*

LOCATION TO NEAREST
PROPERTY OR LEASE LINE, FT.
(Also to nearest drlg. unit line, if any)

660'

16. NO. OF ACRES IN LEASE

±965

17. NO. OF ACRES ASSIGNED
TO THIS WELL

160

18. DISTANCE FROM PROPOSED LOCATION*

TO NEAREST WELL, DRILLING, COMPLETED,
OR APPLIED FOR, ON THIS LEASE, FT.

19. PROPOSED DEPTH

4800'

20. ROTARY OR CABLE TOOLS

Rotary

21. ELEVATIONS (Show whether DF, RT, GR, etc.)

3759.6'

22. APPROX. DATE WORK WILL START*

ASAP

23.

PROPOSED CASING AND CEMENTING PROGRAM LEASE EXPIRES 7/1/84

SIZE OF HOLE	SIZE OF CASING	WEIGHT PER FOOT	SETTING DEPTH	QUANTITY OF CEMENT
14 3/4"	10 3/4"	40.5# J-55	1000'	800 sx circ
7 7/8"	4 1/2"	9.5# J-55	TD	350 sx

We propose to drill and test the Abo and intermediate formations. Approximately 1000' of surface casing will be set and cement circulated to shut off gravel and caving. If needed (lost circulation) 8 5/8" intermediate casing will be run to 1500' and cemented with enough cement calculated to tie back into the surface casing. If commercial, production casing will be run and cemented with adequate cover, perforated and stimulated as needed for production.

MUD PROGRAM: FW gel/LCM to 1000', Brine to 3500', Brine/KCL water to TD.

BOP PROGRAM: BOP's will be installed at the offset and tested daily.

GAS NOT DEDICATED.

IN ABOVE SPACE DESCRIBE PROPOSED PROGRAM: If proposal is to deepen or plug back, give data on present productive zone and proposed new productive zone. If proposal is to drill or deepen directionally, give pertinent data on subsurface locations and measured and true vertical depths. Give blowout preventer program, if any.

24.

SIGNED



TITLE Regulatory Agent

DATE 5/25/84

(This space for Federal or State office use)

PERMIT NO.

APPROVAL DATE

APPROVED BY

TITLE

DATE

CONDITIONS OF APPROVAL, IF ANY:

S. M. KIRK

APPROVED

Post. 2108
30-1078 Bk.
6-15-84

**NEW MEXICO OIL CONSERVATION COMMISSION
WELL LOCATION AND ACREAGE DEDICATION PLAT**

Form C-102
Supersedes C-128
Effective 1-1-65

All distances must be from the outer boundaries of the Section.

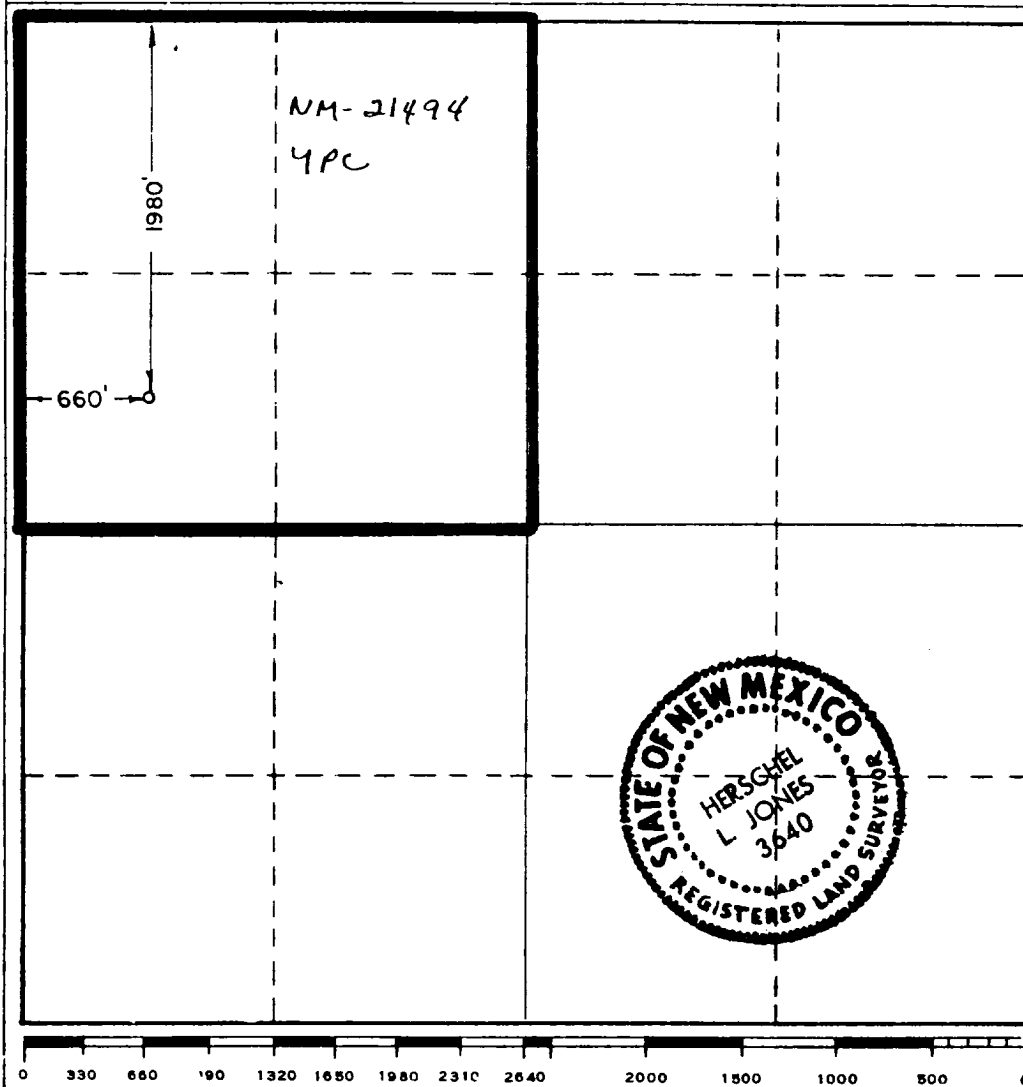
Operator YATES PETROLEUM CORPORATION			Lease WANDA "ZT" FEDERAL		Well No. 1
Unit Letter E	Section 31	Township 10 South	Range 26 East	County Chaves	
Actual Footage Location of Well: 1980 feet from the North line and 660 feet from the West line					
Ground Level Elev. 3759.6	Producing Formation Abo		Pool Pecos Slope Abo		Dedicated Acreage: 160 Acres

1. Outline the acreage dedicated to the subject well by colored pencil or hachure marks on the plat below.
2. If more than one lease is dedicated to the well, outline each and identify the ownership thereof (both as to working interest and royalty).
3. If more than one lease of different ownership is dedicated to the well, have the interests of all owners been consolidated by communitization, unitization, force-pooling, etc?

☐ Yes ☐ No If answer is "yes," type of consolidation _____

If answer is "no," list the owners and tract descriptions which have actually been consolidated. (Use reverse side of this form if necessary.) _____

No allowable will be assigned to the well until all interests have been consolidated (by communitization, unitization, forced-pooling, or otherwise) or until a non-standard unit, eliminating such interests, has been approved by the Commission.



CERTIFICATION

I hereby certify that the information contained herein is true and complete to the best of my knowledge and belief.

Gliserio Rodriguez
Name
Gliserio Rodriguez

Position
Regulatory Agent
Company
Yates Petroleum Corp.

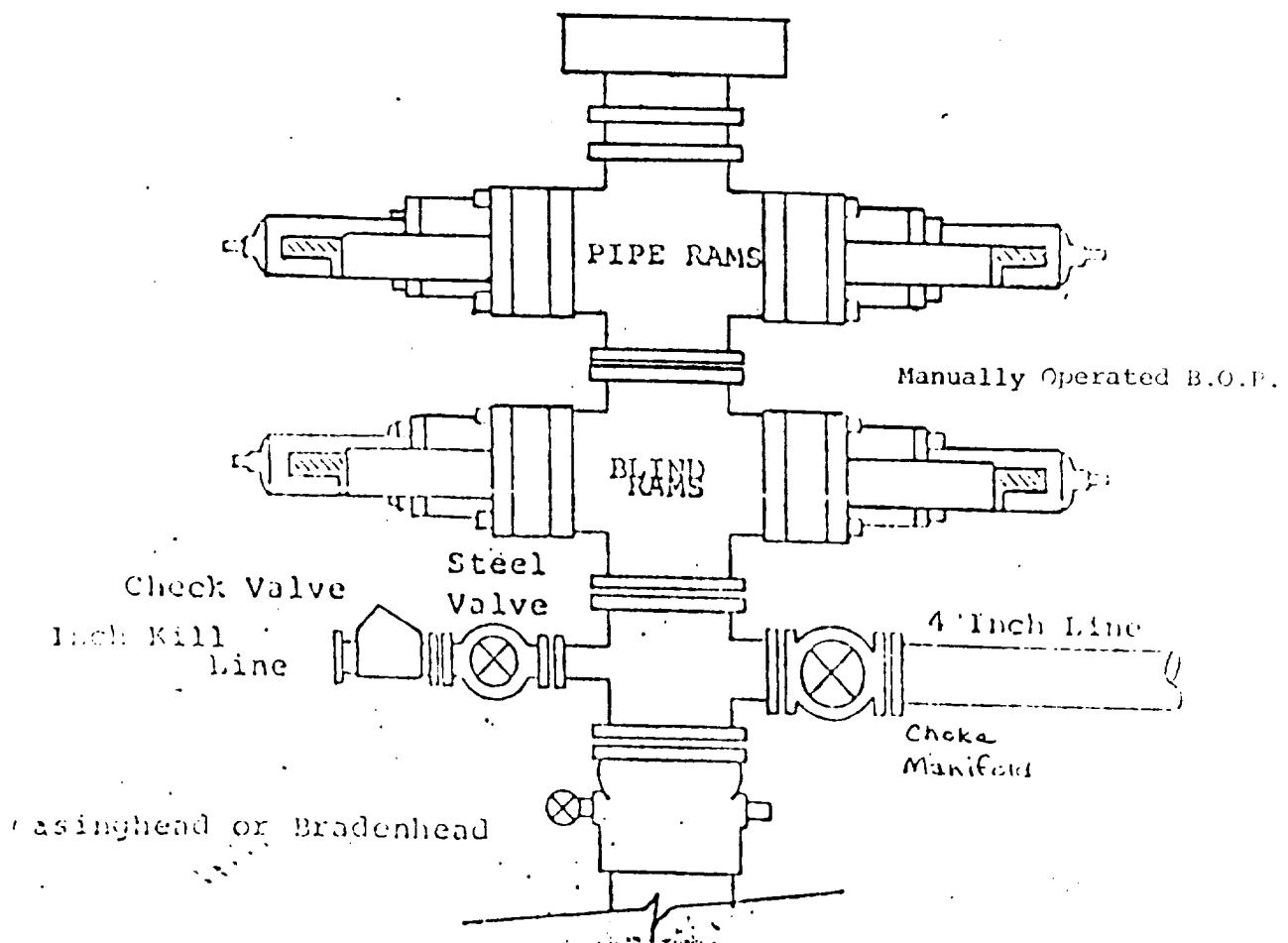
Date
5/25/84

I hereby certify that the well location shown on this plat was plotted from field notes of actual surveys made by me or under my supervision, and that the same is true and correct to the best of my knowledge and belief.

Date Surveyed
5/17/84
Registered Professional Engineer and/or Land Surveyor

Herschel L. Jones
Certificate No.
3640

EXHIBIT B
BDP DIAGRAM
RATED 3000[#]



YATES PETROLEUM CORPORATION
Wanda "ZT" Federal #1
1980' FNL and 660' FWL
Sec. 31-T10S-R26E

In conjunction with Form 9-331C, Application for Permit to Drill subject well, Yates Petroleum Corporation submits the following ten items of pertinent information in accordance with BLM requirements.

1. The geologic surface formation is sandy alluvium.
2. The estimated tops of geologic markers are as follows:

San Andres	900'
Glorieta	2010'
Fullerton	3450'
Abo	4244'
TD	4800'

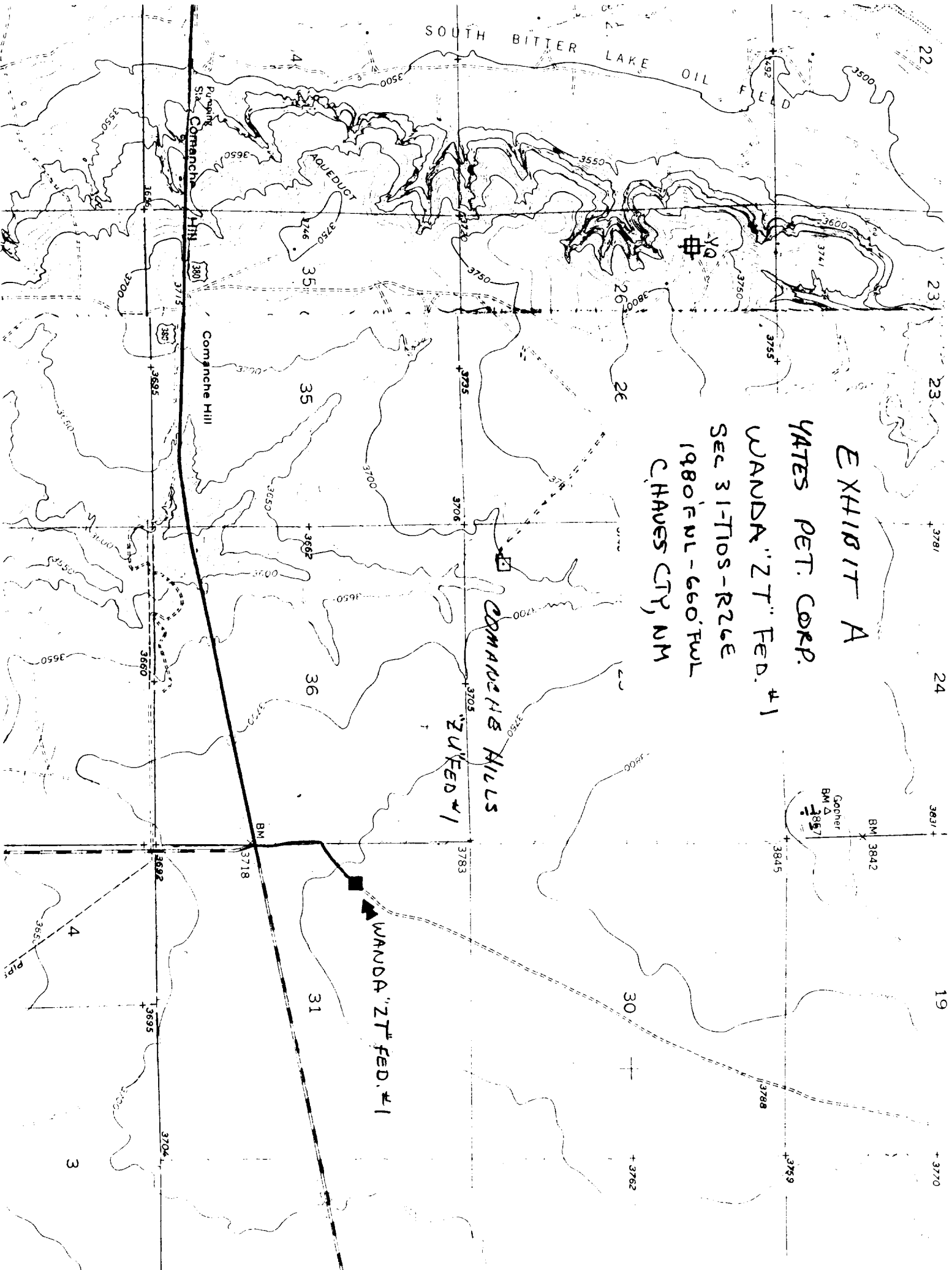
3. The estimated depths at which anticipated water, oil or gas formations are expected to be encountered:

Water: 250-300'

Oil or Gas: 4100'

4. Proposed Casing Program: See Form 9-331C.
5. Pressure Control Equipment: See Form 9-331C.
6. Mud Program: See Form 9-331C.
7. Auxiliary Equipment: Kelly Cock; pit level indicators and flow sensor equipment; sub with full-opening valve on floor, drill pipe connection.
8. Testing, Logging and Coring Program:
Samples: Surface casing to TD.
DST's: As warranted.
Coring: None anticipated.
Logging: CNL-FDC TD to csg w/GR-CNL to surface, DLL from TD to csg.
9. No abnormal pressures or temperatures are anticipated.
10. Anticipated starting date: As soon as possible after approval.

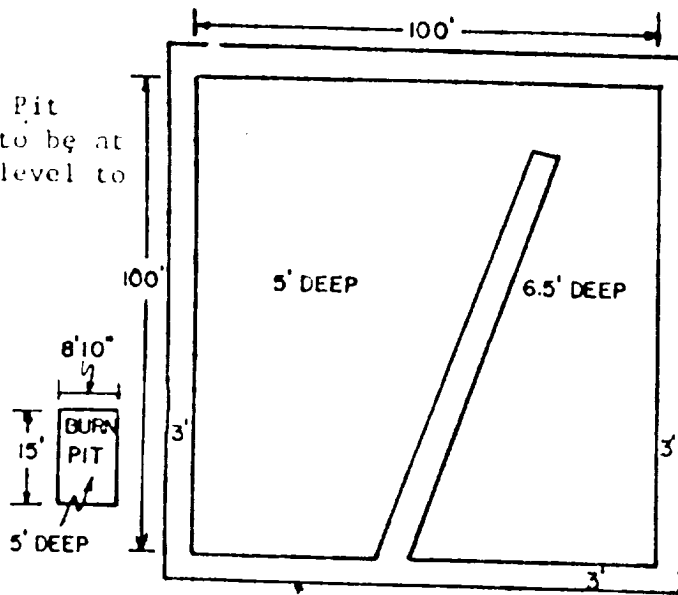
EXHIBIT A
YATES PET. CORP.
WANDA "ZT" FED. #1
SEC 31-T10S-R26E
1980 FWL - 660 FWL
CHAVES CITY, NM



YATES PETROLEUM CORP.

Exhibit C

Reserve Pit
bottom to be at
ground level to
1 ft.



NOTE:

Inside walls must be as
high and wide as outer
walls of pit.

