

UNITED STATES
DEPARTMENT OF THE INTERIOR
GEOLOGICAL SURVEY

APPLICATION FOR PERMIT TO DRILL, DEEPEN OR PLUG BACK

1a. TYPE OF WORK

DRILL ☒

DEEPEN ☐

PLUG BACK ☐

b. TYPE OF WELL

OIL WELL ☐

GAS WELL ☒

OTHER ☐

2. NAME OF OPERATOR

Stevens Operating Corporation

3. ADDRESS OF OPERATOR

P. O. Box 2203 Roswell, NM 88201

4. LOCATION OF WELL (Report location clearly and in accordance with any State requirements.)

At surface 330' FNL 330' FEL Sec 35 T-6-S R-22-E

At proposed prod. zone Same

14. DISTANCE IN MILES AND DIRECTION FROM NEAREST TOWN OR POST OFFICE*

26.4 NW of Roswell, NM

15. DISTANCE FROM PROPOSED*

LOCATION TO NEAREST PROPERTY OR LEASE LINE, FT. (Also to nearest drig. unit line, if any) 330'

16. NO. OF ACRES IN LEASE

2374.37

18. DISTANCE FROM PROPOSED LOCATION*

TO NEAREST WELL, DRILLING, COMPLETED, OR APPLIED FOR, ON THIS LEASE, FT. N/A

19. PROPOSED DEPTH

3500'

21. ELEVATIONS (Show whether DF, RT, GR, etc.)

4184.3 Ground

23.

PROPOSED CASING AND CEMENTING PROGRAM

SIZE OF HOLE	SIZE OF CASING	WEIGHT PER FOOT	SETTING DEPTH
12 1/4	8 5/8	24.0	900
7 7/8	4 1/2	10.5	3500

QUANTITY OF CEMENT
circulated to surf.
1000' above Pay zone

Insufficient

Well will be drilled to total depth & logged, if warranted casing will be run cemented, & selectively perforated to test potential producing zones. Gas is not dedicated.

IN ABOVE SPACE DESCRIBE PROPOSED PROGRAM: If proposal is to deepen or plug back, give data on present productive zone and proposed new productive zone. If proposal is to drill or deepen directionally, give pertinent data on subsurface locations and measured and true vertical depths. Give blowout preventer program, if any.

24.

SIGNED

TITLE Production Controller

(This space for Federal or State office use)

PERMIT NO.

APPROVAL DATE

APPROVED BY

TITLE

CONDITIONS OF APPROVAL, IF ANY:

5. LEASE DESIGNATION AND SERIAL NO.
NM 36196

6. IF INDIAN, ALLOTTEE OR TRUSTEES NAME
N/A

7. UNIT AGREEMENT NAME
N/A

8. FARM OR LEASE NAME
Titium Federal Com.

9. WELL NO.
#1

10. WIND AND POOL, OR LOCATED
Reco's Slope

11. SEC. T. R. M. OR SURVEY OR AREA
Sec 35 T-6-S R-22-E

12. COUNTY OR PARISH
Chaves

13. STATE
NM

17. NO. OF ACRES ASSIGNED TO THIS WELL
160

20. ROTARY OR CABLE TOOLS
Rotary

22. APPROX. DATE WORK WILL START
1 July 1984

NEW MEXICO OIL CONSERVATION COMMISSION
WELL LOCATION AND ACREAGE DEDICATION PLAT

Form C-102
Supersedes C-128
Effective 1-1-65

All distances must be from the outer boundaries of the Section

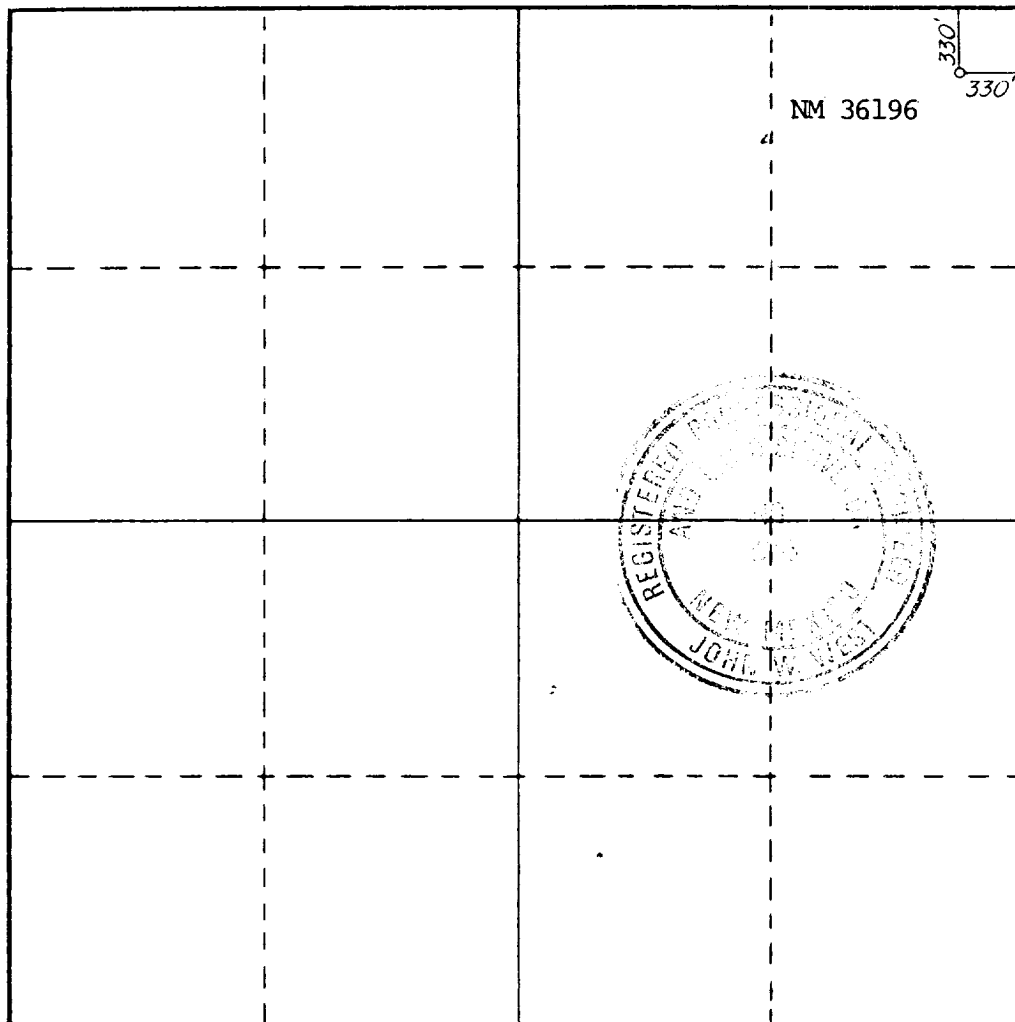
Operator STEVENS OPERATING CO.			Lease TATUM EST. FED <i>Com.</i>		Well No. 1
Unit Letter A	Section 35	Township 6S	Range 22E	County CHAVES	
Actual Footage Location of Well: 330 feet from the NORTH line and 330 feet from the EAST line					
Ground Level Elev. 4184.3	Producing Formation Abo	Pool <i>West</i> Pecos Slope Abo		Dedicated Acreage: 160 Acres	

1. Outline the acreage dedicated to the subject well by colored pencil or hachure marks on the plat below.
2. If more than one lease is dedicated to the well, outline each and identify the ownership thereof (both as to working interest and royalty).
3. If more than one lease of different ownership is dedicated to the well, have the interests of all owners been consolidated by communitization, unitization, force-pooling, etc?

☒ Yes ☐ No If answer is "yes," type of consolidation _____

If answer is "no," list the owners and tract descriptions which have actually been consolidated. (Use reverse side of this form if necessary.) _____

No allowable will be assigned to the well until all interests have been consolidated (by communitization, unitization, forced-pooling, or otherwise) or until a non-standard unit, eliminating such interests, has been approved by the Commission.



CERTIFICATION

I hereby certify that the information contained herein is true and complete to the best of my knowledge and belief.

Name *John V. Walker*
John V. Walker

Position
Geologist

Company
Stevens Operating Corporation

Date
6-4-84

I hereby certify that the well location shown on this plat was plotted from field notes of actual surveys made by me or under my supervision, and that the same is true and correct to the best of my knowledge and belief.

Date Surveyed
5/9/84

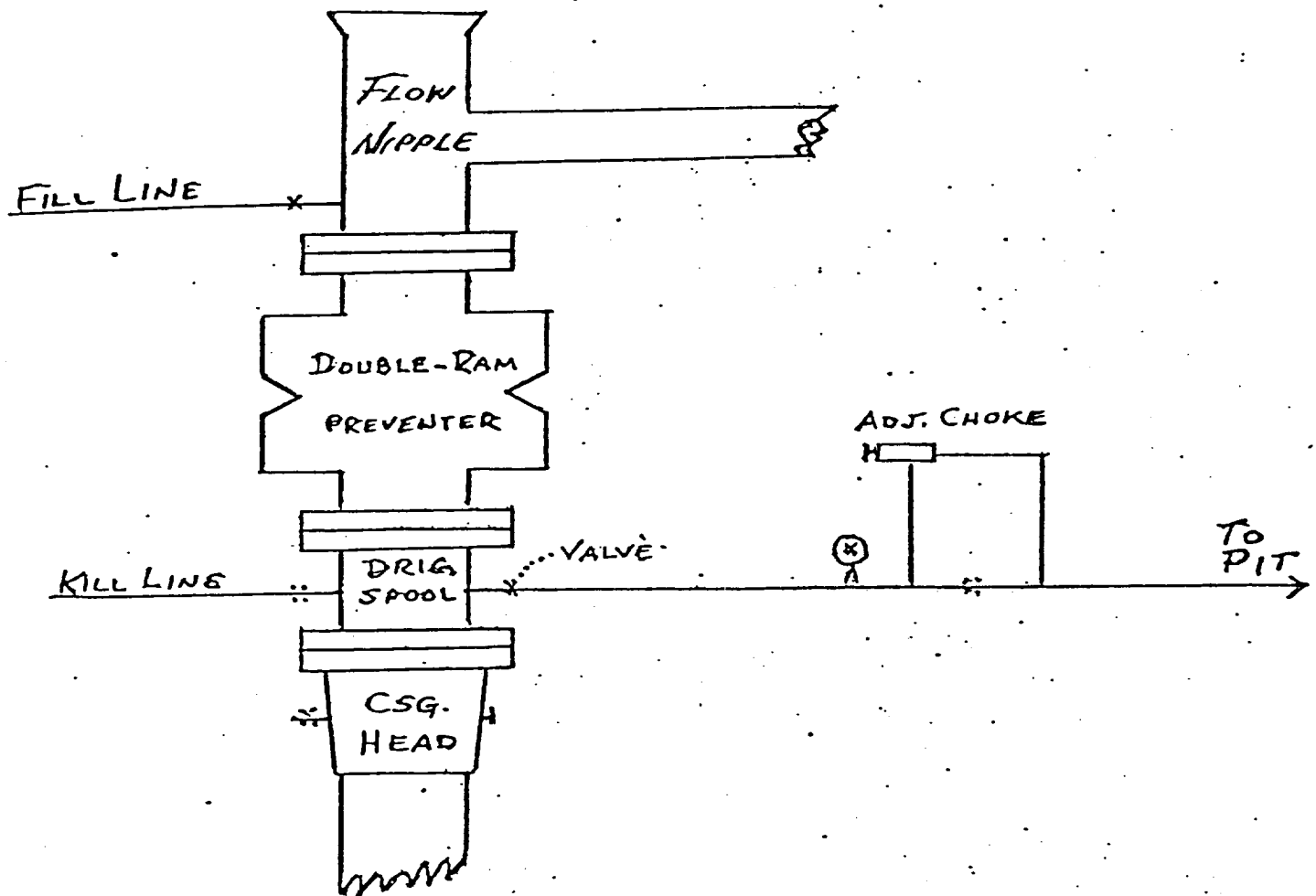
Registered Professional Engineer and/or Land Surveyor

John W. West
Certificate No. JOHN W. WEST, 676

RONALD J. EIDSON, 3239

B O P & CHOKE MANIFOLD

SERIES 900



STEVENS OPERATING CORPORATION
Well #1 TATUM FEDERAL COM
330 FNL 330 FEL, Sec. 35, T-6-S R-22-E
CHAVES COUNTY, NEW MEXICO

SUPPLEMENTAL DRILLING DATA

STEVENS OPERATING CORPORATION
Well #1 TATUM FEDERAL COM.
330 FNL 330 FEL, Sec.35, T-6-S R-22-E
CHAVES COUNTY, NEW MEXICO

1. SURFACE FORMATION: Alluvium

2. ESTIMATED TOPS OF GEOLOGIC MARKERS:

Abo	2785'	Yeso	2216'
		TD	3500'

3. ANTICIPATED POROSITY ZONES:

Water	None anticipated
Oil	None anticipated
Gas	2785' - 3500'

4. CASING DESIGN:

<u>Size</u>	<u>Interval</u>	<u>Weight</u>	<u>Grade</u>	<u>Joint</u>	<u>Condition</u>
8 5/8"	0 - 900'	24.0#	K-55	STC	New
4 1/2"	0 - 3500'	10.5#	K-55	STC	New

5. SURFACE CONTROL EQUIPMENT: A double Ram-type preventer. (900 Series) A Sketch of BOP stack is attached.

6. CIRCULATING MEDIUM:

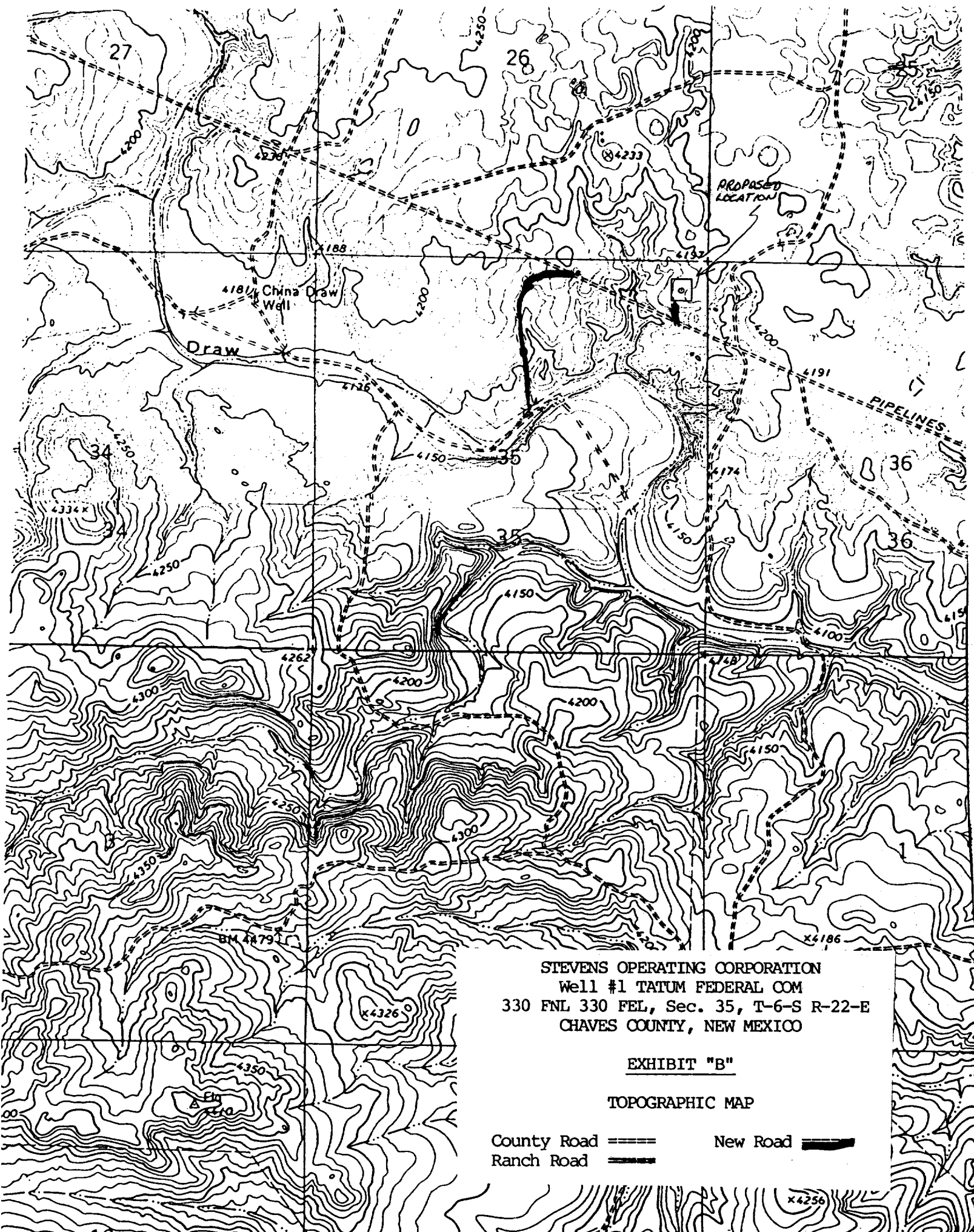
0 - 900	Fresh water mud with gel added if needed.
900 - 3500	Salt water mud, conditioned as necessary for control of viscosity and water loss.

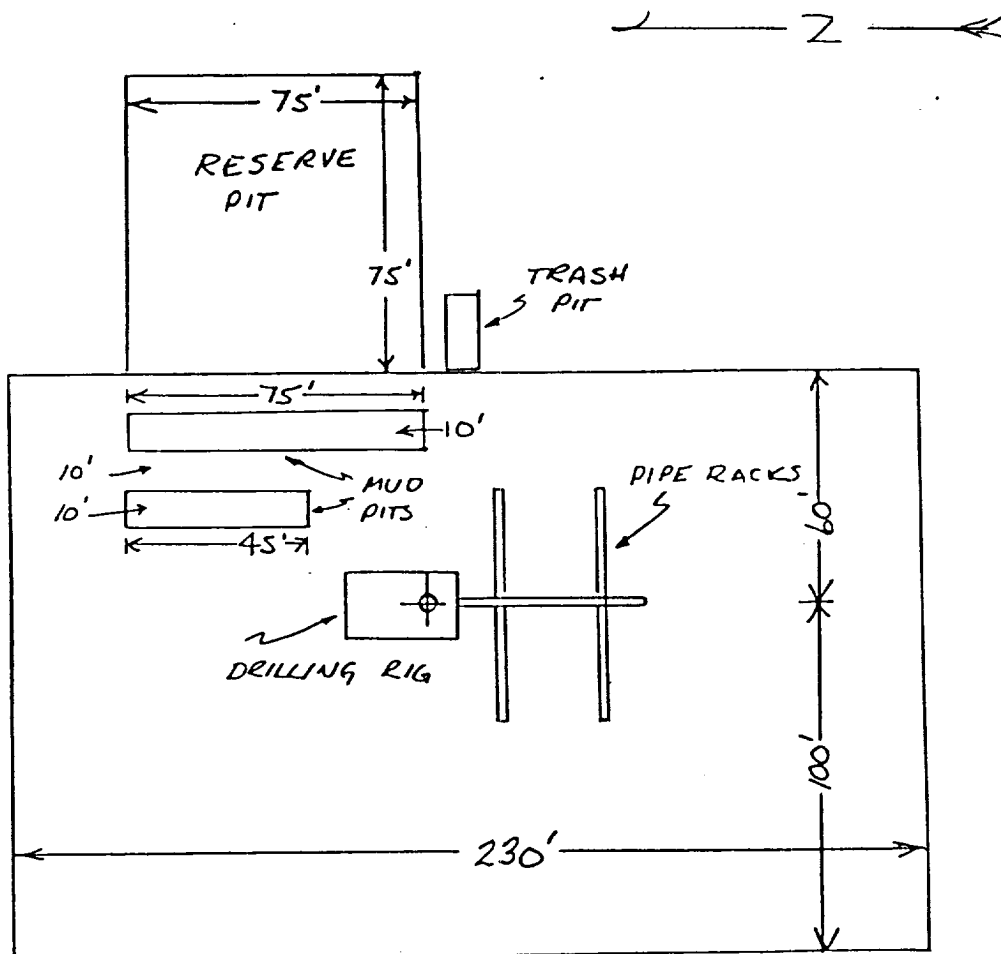
7. AUXILIARY EQUIPMENT: Drill string safety valve.

8. TESTING, LOGGING AND CORING PROGRAMS: Coring & testing may be performed in zones of interest. Compensated Neutron-Formation Density w/Gamma Ray Log. 0 - T.D.. Dual Laterlog Shoe to T.D.

9. ABNORMAL PRESSURES, TEMPERATURES OR GASES: None anticipated.

10. ANTICIPATED DATES: It is planned that drilling operations will commence about July 1, 1984. Duration of drilling and completion operations should be 20 to 60 days.





STEVENS OPERATING CORPORATION
 Well #1 TATUM FEDERAL COM
 330 FNL 330 FEL, Sec. 35, T-6-S R-22-E
 CHAVES COUNTY, NEW MEXICO

EXHIBIT "D"

SKETCH OF WELL PAD