

30-005-62170

UNITED STATES DEPARTMENT OF THE INTERIOR

GEOLOGICAL SURVEY

JUL 6 1984

APPLICATION FOR PERMIT TO DRILL, DEEPEN OR PLUG BACK

1a. TYPE OF WORK

DRILL ☒

ARTESIA OFFICE

PLUG BACK ☐

b. TYPE OF WELL

OIL
WELL ☐GAS
WELL ☒

OTHER

SINGLE
ZONE ☐MULTIPLE
ZONE ☐

2. NAME OF OPERATOR

McClellan Oil Corporation ✓

3. ADDRESS OF OPERATOR

P. O. Drawer 730, Roswell, New Mexico 88202

4. LOCATION OF WELL (Report location clearly and in accordance with any State requirements.)

At surface

At proposed prod. zone 990' FSL & 660' FWL

14. DISTANCE IN MILES AND DIRECTION FROM NEAREST TOWN OR POST OFFICE

25 miles North & 13 miles East of Roswell, New Mexico

10. DISTANCE FROM PROPOSED*

LOCATION TO NEAREST
PROPERTY OR LEASE LINE, FT.
(Also to nearest drlg. unit line, if any)

660'

16. NO. OF ACRES IN LEASE

2441.49

17. NO. OF ACRES ASSIGNED
TO THIS WELL

160

18. DISTANCE FROM PROPOSED LOCATION*
TO NEAREST WELL, DRILLING, COMPLETED,
OR APPLIED FOR, ON THIS LEASE, FT.

2310'

19. PROPOSED DEPTH

4215'

20. ROTARY OR CABLE TOOLS

Rotary

21. ELEVATIONS (Show whether DF, RT, GR, etc.)

3776' GL

22. APPROX. DATE WORK WILL START*

June 23, 1984

23.

PROPOSED CASING AND CEMENTING PROGRAM

SIZE OF HOLE	SIZE OF CASING	WEIGHT PER FOOT	SETTING DEPTH	QUANTITY OF CEMENT
17-1/2"	13-3/8"	48	40'	6 yards
12-1/4"	8-5/8"	22 24	900'	250 sx (circulated)
7-7/8"	4-1/2"	10.5	4215'	350 sx

Propose to drill and test the Abo formation. Approximately 900' of surface casing will be set and cement circulated. If production is indicated, will run production casing and attempt completion.

Formation Tops: San Andres - 610', Glorieta - 1628', Tubb - 2914', Abo - 3665'

Mud Program: Fresh water to top of Abo. Will mud up 100' above Abo with 15cc water loss, 9.5 lb/gal Mud wt., and 40 Viscosity Mud.

Gas is not dedicated

IN ABOVE SPACE DESCRIBE PROPOSED PROGRAM: If proposal is to deepen or plug back, give data on present productive zone and proposed new productive zone. If proposal is to drill or deepen directionally, give pertinent data on subsurface locations and measured and true vertical depths. Give blowout preventer program, if any.

24.

SIGNED

Mark McClellan

TITLE

Geologist

DATE

June 5, 1984

(This space for Federal or State office use)

PERMIT NO.

APPROVAL DATE

APPROVED BY

S/Phil Kirk

TITLE

Area Manager

DATE

6-29-84

CONDITIONS OF APPROVAL, IF ANY:

*See Instructions On Reverse Side

Post. A.R.
JD-10 1/2 P.R.
7-6-84

All distances must be from the outer boundaries of the Section.

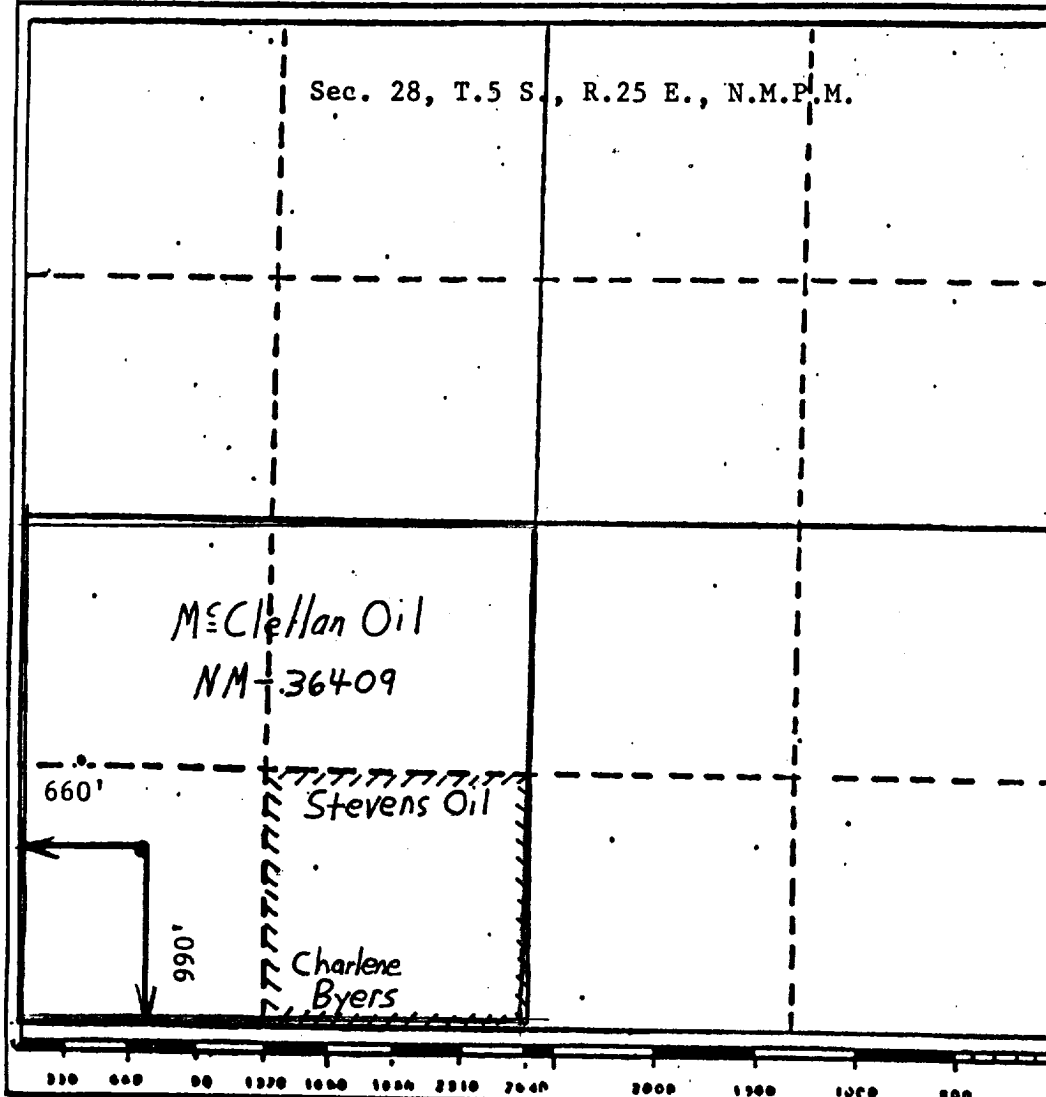
Operator McClellan Oil Corp.			Lease MOC Federal Comm		Well No. #8
Unit Letter M	Section 28	Township 5 South	Range 25 East	County Chaves	
Actual Footage Location of Well: 990 feet from the South line and 660 feet from the West line					
Ground Level Elev. 3776'	Producing Formation Abo		Paul		Dedicated Acreage 160

1. Outline the acreage dedicated to the subject well by colored pencil or hachure marks on the plat below.
2. If more than one lease is dedicated to the well, outline each and identify the ownership thereof (both as to working interest and royalty).
3. If more than one lease of different ownership is dedicated to the well, have the interests of all owners been consolidated by communitization, unitization, force-pooling, etc?

☒ Yes ☐ No If answer is "yes;" type of consolidation Communitization

If answer is "no," list the owners and tract descriptions which have actually been consolidated. (Use reverse side of this form if necessary.)

No allowable will be assigned to the well until all interests have been consolidated (by communitization, unitization, forced-pooling, or otherwise) or until a non-standard unit, eliminating such interests, has been approved by the Division



CERTIFICATION

I hereby certify that the information contained herein is true and complete to the best of my knowledge and belief.

Mark McClellan

Name
Mark McClellan

Position
Geologist

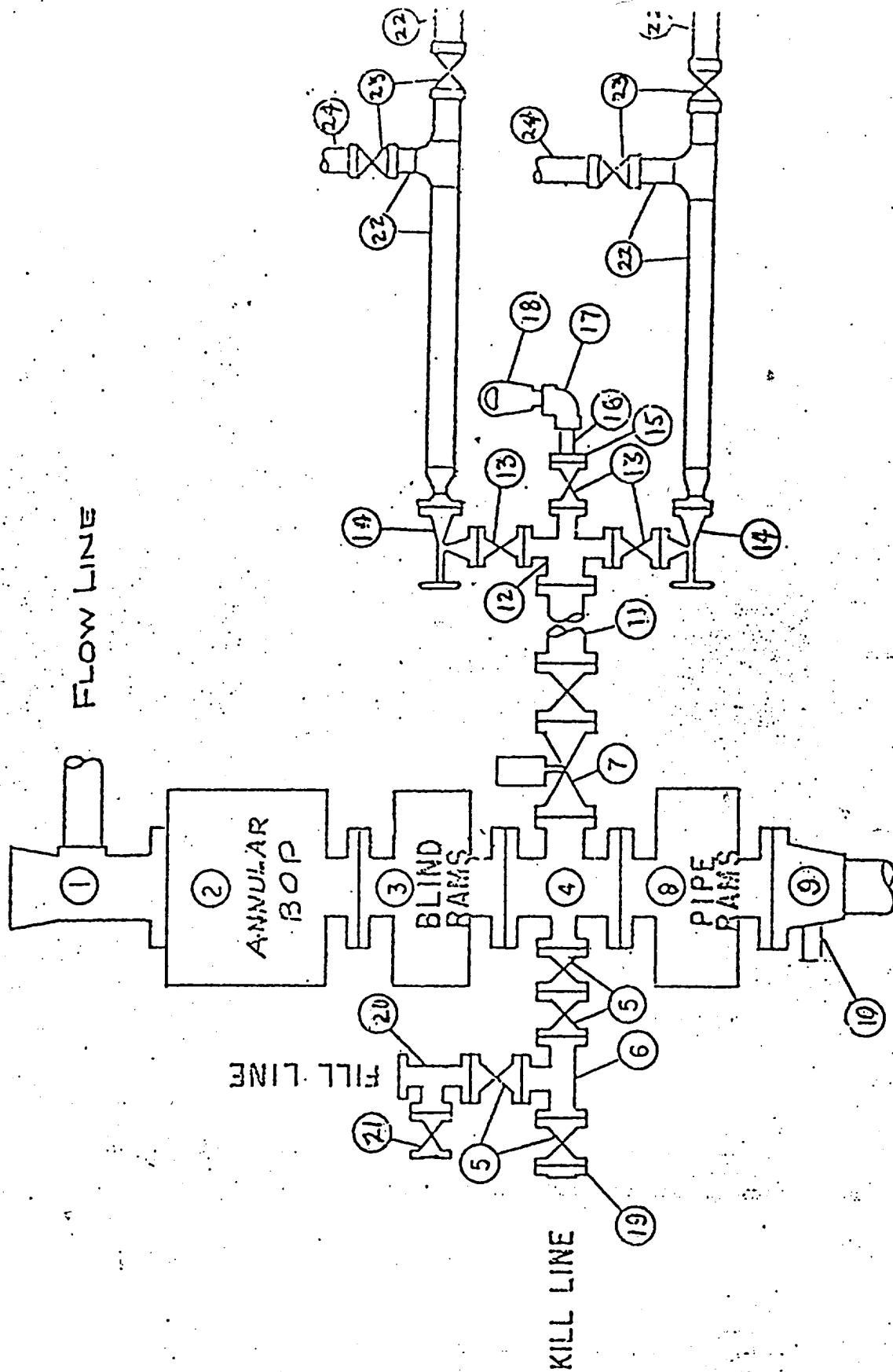
Company
McClellan Oil Corp.

Date
June 5, 1984

I hereby certify that the well location shown on this plat was plotted from field notes of actual surveys made by me or under my supervision, and that the same is true and correct to the best of my knowledge and belief.

JOHN D. JAQUES
NEW MEXICO
Professional Engineer
and Licensed Surveyor
June 1, 1984
John D. Jaques, P.E. & L.S.
Certificate No. 6290

BLOWOUT PREVENTER SPECIFICATION



SURFACE USE PLAN EXHIBIT "E"

McClellan Oil Corporation
MOC FEDERAL NO. 8 Comm
S28-T5S-R25E, Chaves County

REQUIREMENTS
(NTL-6)

1. Location: Sec. 28-T5S-R25E, 990' FSL & 660' FWL
2. Elevation: 3776' G.L.
3. Geologic name of surface formation: See archaeological report
4. Type of drilling rig and associated equipment: Rotary Rig
5. Proposed drilling depth and objective formation: 4213', Abo
6. Estimated tops of geologic markers:

Yates _____	San Andres <u>610</u>	Abo <u>3665</u>
7-Rivers _____	Glorieta <u>1628</u>	Wolfcamp _____
Queen _____	Tubb <u>2914</u>	_____
7. Estimated depths of any oil, water, or gas: Possible gas, 3665'-4215'
- 8-9. Proposed casing program:

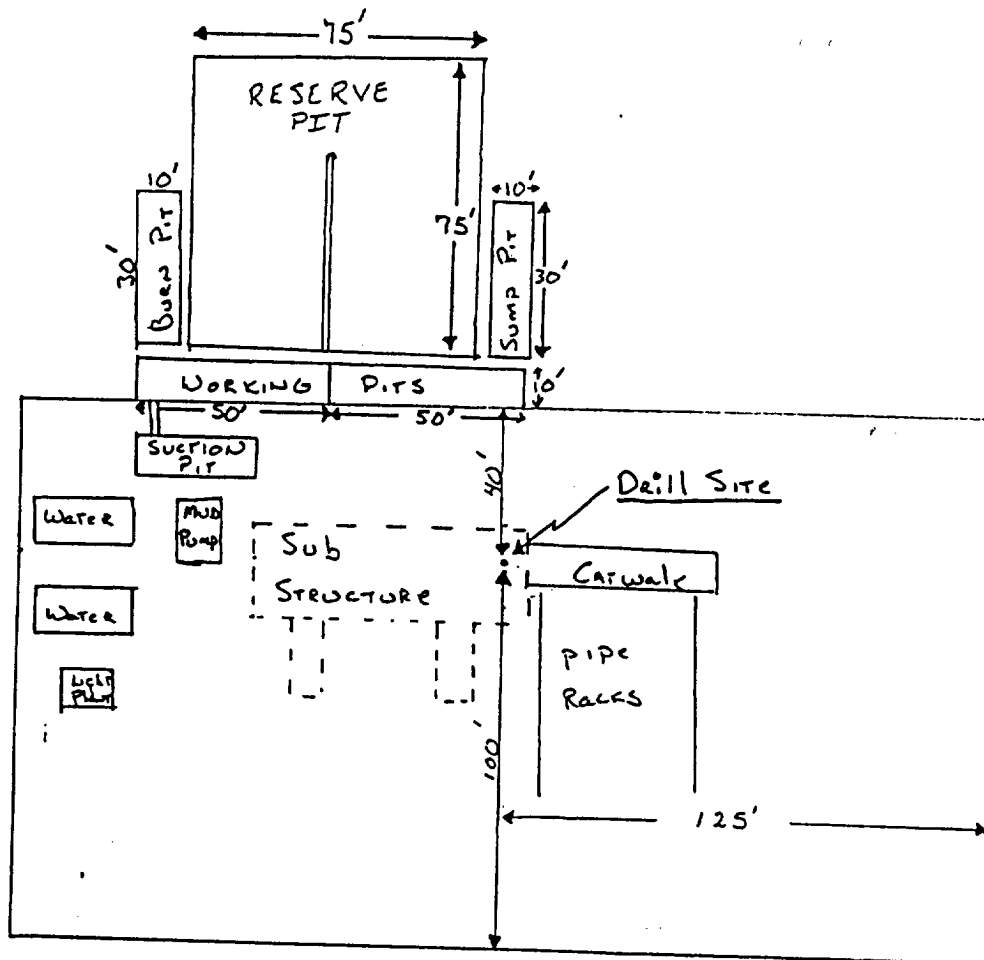
<u>13-3/8"</u>	@ <u>40'</u>	Grade <u>H-40</u>	Wt. <u>48 lb</u>	Type Cement _____	6 yards
<u>8-5/8"</u>	@ <u>900'</u>	Grade <u>J-55</u>	Wt. <u>24 lb</u>	Type Cement _____	Class "C"
<u>4-1/2"</u>	@ <u>4215'</u>	Grade <u>J-55</u>	Wt. <u>10.5 lb</u>	Type Cement _____	Class "C"
10. Specifications for pressure control equipment and testing procedures: Schaeffer Model 39 (4500 psi test) See Exhibit "E".
11. Type and characteristics of drilling fluids: Fresh water to top of Abo
Mud up 100' above Abo with 15cc water loss, 40 Vis and 9.5 lb/gal Mud.
12. Testing, logging, and coring programs: Will run Compensated Neutron - Compensated Density, Dual Laterolog Micro SFL gamma ray logs.
13. Anticipated abnormal pressures or temperature: None anticipated
14. Anticipated commencement and completion date: June 23, 1984 to July 5, 1984
15. Other pertinent information: None

McCLELLAN OIL CORPORATION
SUGGESTED PAD DIMENSIONS

Reserve Pits 4 ft. deep, plastic lined

Working pits 5 ft. deep

No cellar



Scale 1" = 50'

SURFACE USE PLAN EXHIBIT "D"

McClellan Oil Corporation
MOC FEDERAL NO. 8 Comm
S28-T5S-R25E, Chaves County



McClellan Oil Corporation

NM OIL CON². COMMISSION
Drawer DD
Albuquerque, NM 88210

June 18, 1984

Bureau of Land Management
P. O. Box 1397
Roswell, New Mexico 88202

Re: McClellan Fed. MOC No. 8
Sec. 28-T5S-R25E
Chaves County, New Mexico

Gentlemen:

I have successfully reached an agreement with Mr. E. N. Benedict concerning the use of his surface in the SW $\frac{1}{4}$ of Sec. 28-T5S-R25E.

Sincerely yours,

A handwritten signature in cursive script that reads 'Mark McClellan'.

Mark McClellan
Geologist

MM/tb

