

NEW MEXICO OIL CONSERVATION COMMISSION
WELL LOCATION AND ACREAGE DEDICATION PLAT

RECEIVED BY
DEC 12 1985

Form C-102
Supersedes C-128
Effective 1-1-65

All distances must be from the outer boundaries of the Section.

Operator HARPER OIL CO.		Lease SOUTH DALLAS		O. C. D. ARTESIA, OFFICE		Well No. 1
Unit Letter F	Section 2	Township 10S	Range 26E	County CHAVES		

Actual Footage Location of Well:

1980 feet from the NORTH line and 1980 feet from the WEST line

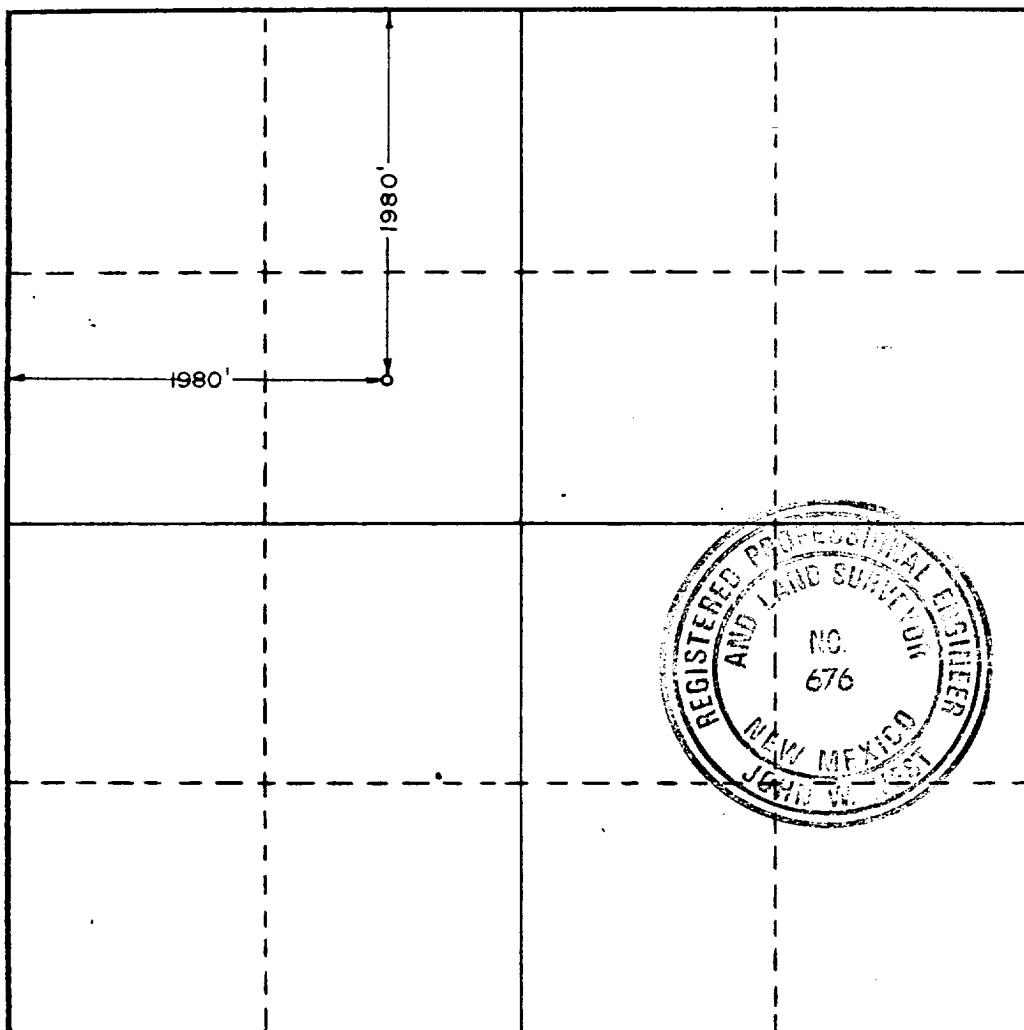
Ground Level Elev. 3843.3	Producing Formation MONTROYA <i>Fls</i>	Pool Wildcat: Montoya <i>w/c Fls</i>	Dedicated Acreage: 320 Acres
------------------------------	--	---	---------------------------------

1. Outline the acreage dedicated to the subject well by colored pencil or hatchure marks on the plat below.
2. If more than one lease is dedicated to the well, outline each and identify the ownership thereof (both as to working interest and royalty).
3. If more than one lease of different ownership is dedicated to the well, have the interests of all owners been consolidated by communitization, unitization, force-pooling, etc?

☐ Yes ☐ No If answer is "yes," type of consolidation _____

If answer is "no," list the owners and tract descriptions which have actually been consolidated. (Use reverse side of this form if necessary.) _____

No allowable will be assigned to the well until all interests have been consolidated (by communitization, unitization, forced-pooling, or otherwise) or until a non-standard unit, eliminating such interests, has been approved by the Commission.



CERTIFICATION

I hereby certify that the information contained herein is true and complete to the best of my knowledge and belief.

Name
Don Neudham
Position
Prod. Supt.
Company
Harper Oil Co
Date
8-17-84

I hereby certify that the well location shown on this plat was plotted from field notes of actual surveys made by me or under my supervision, and that the same is true and correct to the best of my knowledge and belief.

Date Surveyed
8/14/84

Registered Professional Engineer and/or Land Surveyor

John W. West

Certificate No. JOHN W. WEST, 676
RONALD J. EIDSON, 3239

