

UNITED STATES  
DEPARTMENT OF THE INTERIOR  
BUREAU OF LAND MANAGEMENT

APPLICATION FOR PERMIT TO DRILL, DEEPEN, OR PLUG BACK

1A. TYPE OF WORK

DRILL ☒

DEEPEN ☐

PLUG BACK ☐

B. TYPE OF WELL

OIL WELL ☒

GAS WELL ☐

OTHER ☐

2. NAME OF OPERATOR

Stevens Operating Corporation

3. ADDRESS OF OPERATOR

P. O. Box 2203, Roswell, NM 88201

4. LOCATION OF WELL (Report location clearly and in accordance with any State requirements.)

At surface 660 FEL, 1980 FSL, Sec. 4, T-7-S, R-27-E

At proposed prod. zone Same

14. DISTANCE IN MILES AND DIRECTION FROM NEAREST TOWN OR POST OFFICE\*

30 Air Miles N.E. of Roswell, New Mexico

16. DISTANCE FROM PROPOSED\*

LOCATION TO NEAREST PROPERTY OR LEASE LINE, FT. (Also to nearest drig. unit line, if any) 660

16. NO. OF ACRES IN LEASE

319.44

17. NO. OF ACRES ASSIGNED TO THIS WELL

40

18. DISTANCE FROM PROPOSED LOCATION\* TO NEAREST WELL, DRILLING, COMPLETED, OR APPLIED FOR, ON THIS LEASE, FT.

N/A

19. PROPOSED DEPTH

2100

20. ROTARY OR CABLE TOOLS

Cable tools

21. ELEVATIONS (Show whether DF, RT, GR, etc.)

4101.9 GR

22. APPROX. DATE WORK WILL START\*

29 August 1984

23. PROPOSED CASING AND CEMENTING PROGRAM

SIZE OF HOLE	SIZE OF CASING	WEIGHT PER FOOT	SETTING DEPTH	QUANTITY OF CEMENT
12 1/4"	8 5/8	24.0#	400	CMT to Surf.
8"	4 1/2	9.5#	2100	CMT to 500' above pay zone

Well will be drilled to total depth of 2100. All potential zones will be evaluated, if commercial production is indicated, well will be selectively perforated & stimulated.

Attached are:

1. Well Location & Dedication Plat.
2. Supplemental Drilling Data.
3. Surface Use Plan.

IN ABOVE SPACE DESCRIBE PROPOSED PROGRAM: If proposal is to deepen or plug back, give data on present productive zone and proposed new productive zone. If proposal is to drill or deepen directionally, give pertinent data on subsurface locations and measured and true vertical depths. Give blowout preventer program, if any.

24.

SIGNED

TITLE Production Controller

DATE 8-17-84

(This space for Federal or State office use)

PERMIT NO.

APPROVAL DATE

S/Phil Kirk

Area Manager

DATE 8-27-84

APPROVED BY

TITLE

CONDITIONS OF APPROVAL, IF ANY:

\*See Instructions On Reverse Side

Title 18 U.S.C. Section 1001, makes it a crime for any person knowingly and willfully to make to any department or agency of the United States any false, fictitious or fraudulent statements or representations as to any matter within its jurisdiction.

**MEXICO OIL CONSERVATION COMMISS. 4**  
**WELL LOCATION AND ACREAGE DEDICATION PLAT**

Form C-102  
 Supersedes C-128  
 Effective 1-1-65

All distances must be from the outer boundaries of the Section.

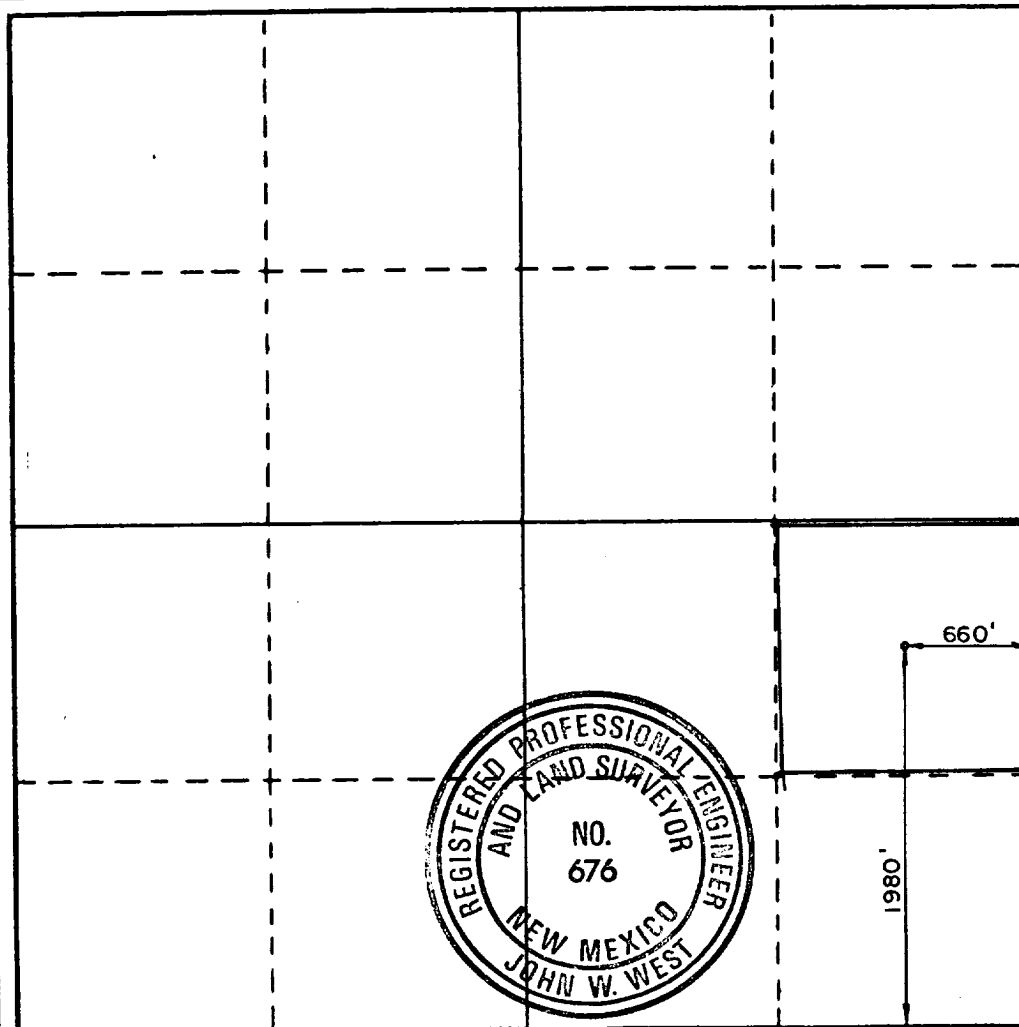
Operator <b>STEVENS OPERATING COMPANY</b>			Lease <b>SCHUTZ FEDERAL</b>		Well No. <b>1</b>
Unit Letter <b>I</b>	Section <b>4</b>	Township <b>7 SOUTH</b>	Range <b>27 EAST</b>	County <b>CHAVES</b>	
Actual Footage Location of Well: <b>1980</b> feet from the <b>SOUTH</b> line and <b>660</b> feet from the <b>EAST</b> line					
Ground Level Elev. <b>4101.9</b>	Producing Formation <b>San Andres</b>		Pool <b>Wildcat</b>	Dedicated Acreage: <b>40</b> Acres	

1. Outline the acreage dedicated to the subject well by colored pencil or hatchure marks on the plat below.
2. If more than one lease is dedicated to the well, outline each and identify the ownership thereof (both as to working interest and royalty).
3. If more than one lease of different ownership is dedicated to the well, have the interests of all owners been consolidated by communitization, unitization, force-pooling, etc?

☐ Yes    ☐ No    If answer is "yes," type of consolidation \_\_\_\_\_

If answer is "no," list the owners and tract descriptions which have actually been consolidated. (Use reverse side of this form if necessary.) \_\_\_\_\_

No allowable will be assigned to the well until all interests have been consolidated (by communitization, unitization, forced-pooling, or otherwise) or until a non-standard unit, eliminating such interests, has been approved by the Commission.



**CERTIFICATION**

I hereby certify that the information contained herein is true and complete to the best of my knowledge and belief.

*Patricia R. Thompson*

Name

**Patricia R. Thompson**

Position

**Production Controller**

Company

**Stevens Operating Corporation**

Date

**8-20-84**

I hereby certify that the well location shown on this plat was plotted from field notes of actual surveys made by me or under my supervision, and that the same is true and correct to the best of my knowledge and belief.

Date Surveyed

**AUGUST 15, 1984**

Registered Professional Engineer and/or Land Surveyor

*John W. West*

Certificate No. **JOHN W. WEST, 676**

**RONALD J. EIDSON, 3239**

0 330 660 990 1320 1650 1980 2310 2640 2970 3300 3630 3960 4290 4620 4950 5280 5610 5940 6270 6600

SUPPLEMENTAL DRILLING DATA

STEVENS OPERATING CORPORATION  
Well #1 SCHUTZ FEDERAL  
660 FEL 1980 FSL, Sec. 4, T-7-S R-27-E  
CHAVES COUNTY, NEW MEXICO

1. SURFACE FORMATION: Alluvium

2. ESTIMATED TOPS OF GEOLOGIC MARKERS:

San Andres	1390'	P-1	1970'
		TD	2100'

3. ANTICIPATED POROSITY ZONES:

Water	0 - 300'
Oil	1970 - 2100'

4. CASING DESIGN:

<u>Size</u>	<u>Interval</u>	<u>Weight</u>	<u>Grade</u>	<u>Joint</u>	<u>Condition</u>
8 5/8"	0 - 400'	24.0#	K-55	STC	New
4 1/2"	0 - 2100'	9.5#	K-55	STC	New

5. SURFACE CONTROL EQUIPMENT: None required on Cable Tool Rig.

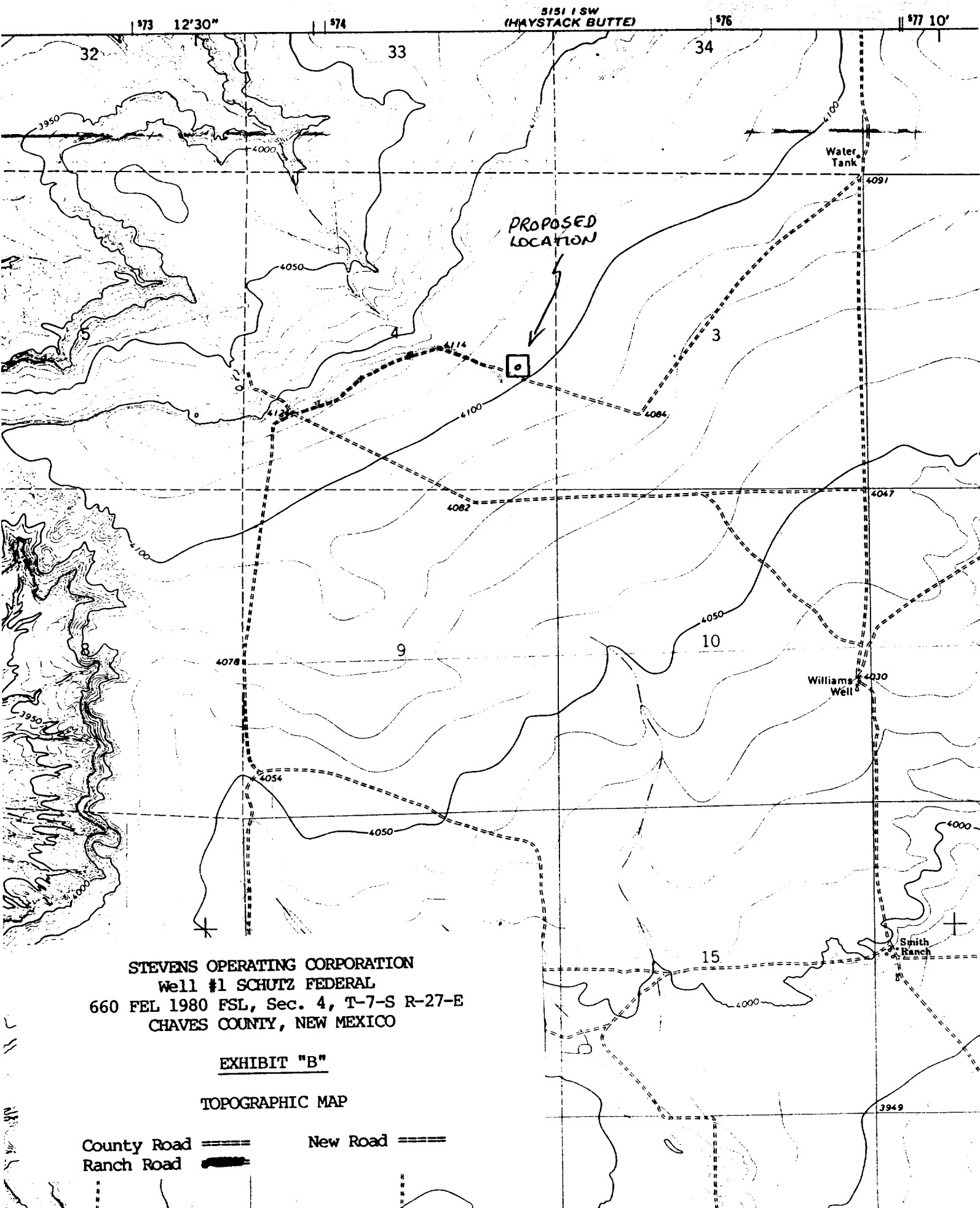
6. CIRCULATING MEDIUM: None required.

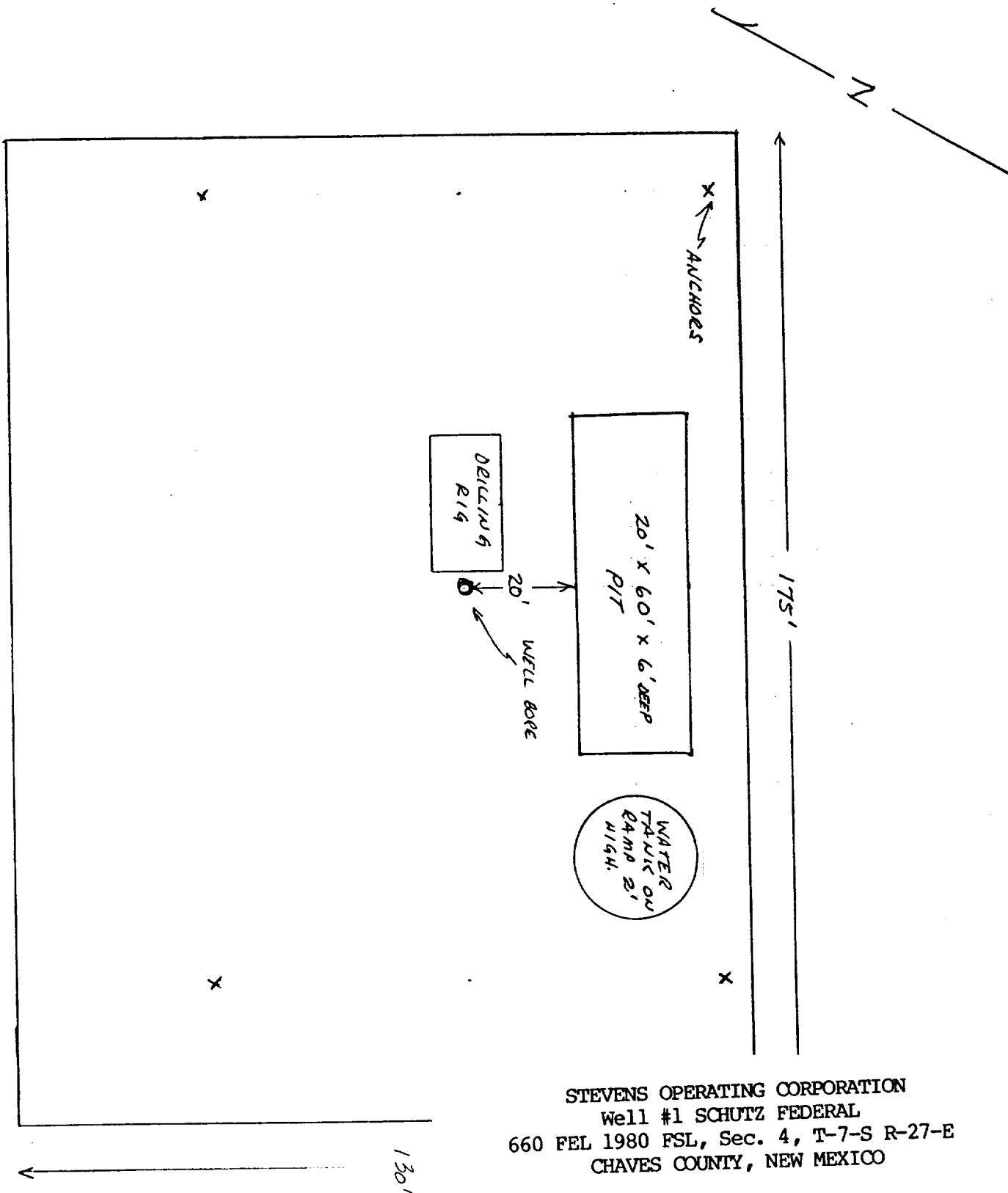
7. AUXILIARY EQUIPMENT: None required.

8. LOGGING PROGRAM: Compensated Neutron w/Gamma Ray Log.  
0 - T.D..

9. ABNORMAL PRESSURES, TEMPERATURES OR GASES: None anticipated.

10. ANTICIPATED DATES: It is planned that drilling operations will commence about August 29, 1984. Duration of drilling and completion operations should be 20 to 60 days.





STEVENS OPERATING CORPORATION  
 Well #1 SCHUTZ FEDERAL  
 660 FEL 1980 FSL, Sec. 4, T-7-S R-27-E  
 CHAVES COUNTY, NEW MEXICO

EXHIBIT "D"

SKETCH OF WELL PAD