

STATE OF NEW MEXICO  
ENERGY AND MINERALS DEPARTMENT

OIL CONSERVATION RECEIVED BY  
P. O. BOX 2488  
SANTA FE, NEW MEXICO 87505  
SEP 21 1984

30-005-62195  
Form C-101  
Revised 10-1-78

NO. OF COPIES RECEIVED	
DISTRIBUTION	
SANTA FE	✓
FILE	✓
U.S.G.S.	2
LAND OFFICE	
OPERATOR	✓

O. C. D.  
ARTESIA, OFFICE

5A. Indicate Type of Lease  
STATE ☐ FEE ☒  
5. State Oil & Gas Lease No.

APPLICATION FOR PERMIT TO DRILL, DEEPEN, OR PLUG BACK

1a. Type of Work DRILL <input checked="" type="checkbox"/> DEEPEN <input type="checkbox"/> PLUG BACK <input type="checkbox"/>			7. Unit Agreement Name		
b. Type of Well OIL WELL <input type="checkbox"/> GAS WELL <input checked="" type="checkbox"/> OTHER <input type="checkbox"/>			8. Farm or Lease Name Alpha "AAA"		
2. Name of Operator Yates Petroleum Corporation ✓			9. Well No. 1		
3. Address of Operator 207 S. 4th, Artesia, New Mexico 88210			10. Field and Pool, or Wildcat Wildcat - <i>Montoya</i>		
4. Location of Well UNIT LETTER <i>R</i> LOCATED 1980 FEET FROM THE South LINE AND 1980 FEET FROM THE West LINE OF SEC. 23 TWP. 3S RGE. 29E NMPM			12. County Chaves		
11. Elevations (show whether DF, KI, etc.) 4334' GL		21A. Kind & Status Plug. Bond Blanket	19. Proposed Depth 8400'	19A. Formation Granite	20. Rotary or C.T. Rotary
		21B. Drilling Contractor Landis #4	22. Approx. Date Work will start ASAP		

PROPOSED CASING AND CEMENT PROGRAM

SIZE OF HOLE	SIZE OF CASING	WEIGHT PER FOOT	SETTING DEPTH	SACKS OF CEMENT	EST. TOP
17 1/2"	13 3/8"	48# H-40	350'	350 sx	circ
12 1/4"	9 5/8"	36# K-55	2400'	400 sx	circ
7 7/8"	5 1/2"	15.5# K-55	TD	250 sx	

We propose to drill and test the Montoya and intermediate formations. Approximately 350' of surface casing will be set and cement circulated to shut off gravel and caving. If commercial, production casing will be run and cemented with adequate cover, perforated and stimulated as needed for production.

MUD PROGRAM: FW gel/LCM surface to 350', FW to 2400', SW gel/starch to TD.

BOP PROGRAM: BOP's will be installed at the offset and tested daily.

GAS NOT DEDICATED.

APPROVAL VALID FOR 180 DAYS  
PERMIT EXPIRES 3-21-85  
UNLESS DRILLING UNDERWAY

*Partial ID /  
API & NL  
9-28-84*

IN ABOVE SPACE DESCRIBE PROPOSED PROGRAM; IF PROPOSAL IS TO DEEPEN OR PLUG BACK, GIVE DATA ON PRESENT PRODUCTIVE ZONE AND PROPOSED NEW PRODUCTIVE ZONE. GIVE BLOWOUT PREVENTER PROGRAM, IF ANY.

I hereby certify that the information above is true and complete to the best of my knowledge and belief.

Signed *Larry Brooks* Title Regulatory Agent Date 7/6/84

(This space for State Use)

ORIGINAL SIGNED  
BY LARRY BROOKS  
GEOLOGIST - NMOCB TITLE

APPROVED BY \_\_\_\_\_ DATE SEP 21 1984

CONDITIONS OF APPROVAL, IF ANY:

NEW MEXICO OIL CONSERVATION COMMISSION  
WELL LOCATION AND ACREAGE DEDICATION PLAT

Form C-102  
Supersedes C-128  
Effective 1-1-65

All distances must be from the outer boundaries of the Section.

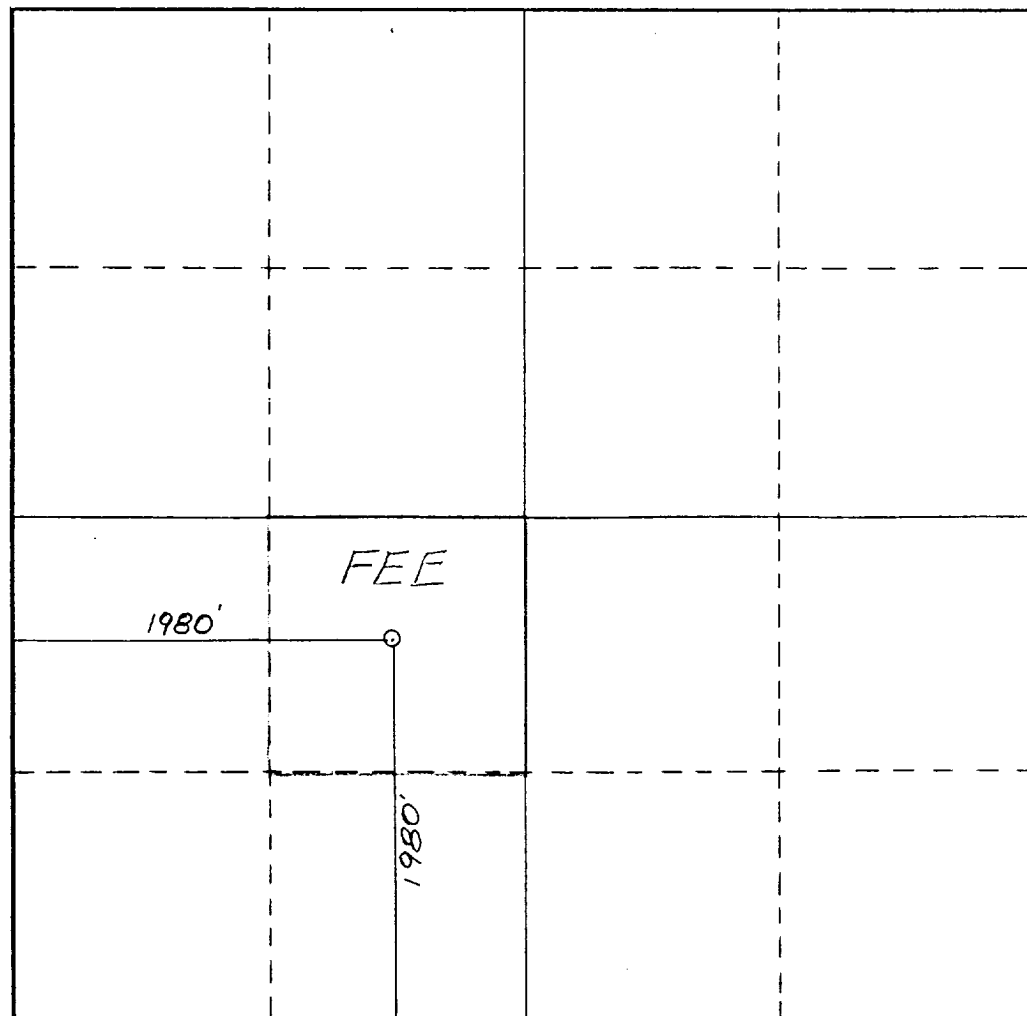
Operator <b>YATES PETROLEUM CORPORATION</b>			Lease <b>Alpha AAA</b>		Well No. <b>1</b>
Unit Letter <b>K</b>	Section <b>23</b>	Township <b>3 South</b>	Range <b>29 East</b>	County <b>Chaves</b>	
Actual Footage Location of Well: <b>1980</b> feet from the <b>South</b> line and <b>1980</b> feet from the <b>West</b> line					
Ground Level Elev. <b>4334</b>	Producing Formation <b>Granite</b>		Pool <b>Wildcat</b>	Dedicated Acreage: <b>40</b> Acres	

- Outline the acreage dedicated to the subject well by colored pencil or hachure marks on the plat below.
- If more than one lease is dedicated to the well, outline each and identify the ownership thereof (both as to working interest and royalty).
- If more than one lease of different ownership is dedicated to the well, have the interests of all owners been consolidated by communitization, unitization, force-pooling, etc?

☐ Yes ☐ No If answer is "yes," type of consolidation \_\_\_\_\_

If answer is "no," list the owners and tract descriptions which have actually been consolidated. (Use reverse side of this form if necessary.) \_\_\_\_\_

No allowable will be assigned to the well until all interests have been consolidated (by communitization, unitization, forced-pooling, or otherwise) or until a non-standard unit, eliminating such interests, has been approved by the Commission.



CERTIFICATION

I hereby certify that the information contained herein is true and complete to the best of my knowledge and belief.

Name  
**Gliserio Rodriguez**  
Position  
**Regulatory Agent**  
Company  
**Yates Petroleum Corp.**

Date  
**7/11/84**

I hereby certify that the well location shown on this plat was plotted from field notes of actual surveys made by me or under my supervision and that the same is true and correct to the best of my knowledge and belief.

Date Surveyed  
**July 9, 1984**

Registered Professional Engineer  
and/or Land Surveyor

**Dan R. Reddy**  
Certificate No.

**NMPE&LS #5412**

# EXHIBIT B

## BDP DIAGRAM

### RATED 3000<sup>#</sup>

