

REC'D BY
UNITED STATES
DEPARTMENT OF THE INTERIOR
BUREAU OF LAND MANAGEMENT
NM OIL CONS. COMMISSION
Drawer DD SUBMIT IN, Llicate
Artesia, NM (Other instructions on
800 (Reverse side)

Form approved.
Budget Bureau No. 1004-0136
Expires August 31, 1985

APPLICATION FOR PERMIT TO DRILL, DEEPEN, OR PLUG BACK

1a. TYPE OF WORK
DRILL ☒ DEEPEN ☐ PLUG BACK ☐

b. TYPE OF WELL
OIL WELL ☐ GAS WELL ☒ OTHER ☐ SINGLE ZONE ☒ MULTIPLE ZONE ☐

2. NAME OF OPERATOR
SANDERS OIL & GAS COMPANY

3. ADDRESS OF OPERATOR
14679 Midway Road, Ste.101
Dallas, Texas 75234

4. LOCATION OF WELL (Report location clearly and in accordance with any State requirements.)*
At surface
660'FNL 1980'FWL Sec.27-9S-24E
At proposed prod. zone
Same

10. FIELD AND POOL, OR WILDCAT
Undesignated - Abo

11. SEC., T., R., M., OR BLK. AND SURVEY OR AREA
Sec.27-9S-24E

12. COUNTY OR PARISH
Chaves

13. STATE
N.M.

14. DISTANCE IN MILES AND DIRECTION FROM NEAREST TOWN OR POST OFFICE*
7 Miles Northeast of Roswell, New Mexico

15. DISTANCE FROM PROPOSED* LOCATION TO NEAREST PROPERTY OR LEASE LINE, FT. (Also to nearest drlg. unit line, if any)
660'

16. NO. OF ACRES IN LEASE
1000.76

17. NO. OF ACRES ASSIGNED TO THIS WELL
160

18. DISTANCE FROM PROPOSED LOCATION* TO NEAREST WELL, DRILLING, COMPLETED, OR APPLIED FOR, ON THIS LEASE, FT.
None

19. PROPOSED DEPTH
4000' Abo

20. ROTARY OR CABLE TOOLS
Rotary

21. ELEVATIONS (Show whether DF, RT, GR, etc.)
3579' GL

22. APPROX. DATE WORK WILL START*
As Soon As Possible

23. PROPOSED CASING AND CEMENTING PROGRAM

SIZE OF HOLE	SIZE OF CASING	WEIGHT PER FOOT	SETTING DEPTH	QUANTITY OF CEMENT
12-1/4"	8-5/8"	24.0# K-55	975'±	500 sx To Circulate
7-7/8"	4-1/2" LT&C	10.5# J-55	4000'±	350 sx To Cover Abo
		or		220 sx Thru DV Tool Set
		9.5# J-55		At 1500'

Propose to drill to 4000'± to test Abo and intermediate formations.

Set 8-5/8" fresh water protection casing to 975'± with cement circulated.
Set 4-1/2" production casing to 4000'±. 1st Stage cemented, 4000' to 2800'. 2nd Stage cemented, 1500' to 775'.

See attached "Supplemental Drilling Data".

Complete by perforating and stimulating favorable zones, run tubing and test.

Gas is not dedicated.

IN ABOVE SPACE DESCRIBE PROPOSED PROGRAM: If proposal is to deepen or plug back, give data on present productive zone and proposed new productive zone. If proposal is to drill or deepen directionally, give pertinent data on subsurface locations and measured and true vertical depths. Give blowout preventer program, if any.

24. SIGNED Jerry W. Long TITLE Agent DATE October 8, 1984
(This space for Federal or State office use)
PERMIT NO. _____ APPROVAL DATE _____
APPROVED BY S/Phil Kirk TITLE Area Manager DATE 10-22-84
CONDITIONS OF APPROVAL, IF ANY:

*See Instructions On Reverse Side

OIL CONSERVATION DIVISION

STATE OF NEW MEXICO
ENERGY AND MINERALS DEPARTMENTP. O. BOX 2088
SANTA FE, NEW MEXICO 87501Form C-102
Revised 10-1-78

All distances must be from the outer boundaries of the Section.

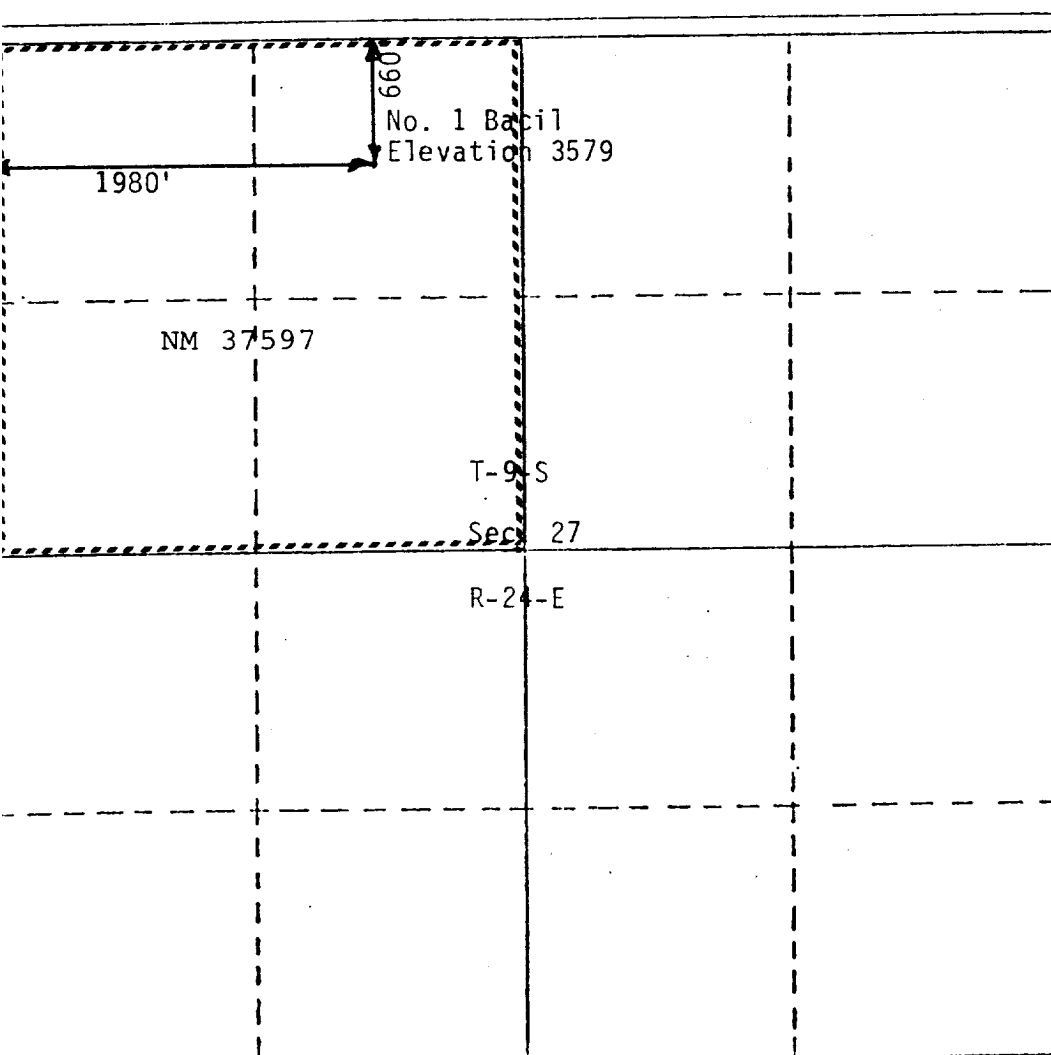
Operator Sanders Oil & Gas Co.			Lease <i>Basil</i>		Well No. No. 1 Basil
Section Letter C	Section 27	Township 9 South	Range 24 East	County Chaves	
Actual Footage Location of Well: 660 feet from the north line and 1980 feet from the west line					
Sound Level Elev. 3579	Producing Formation Abo	Pool Undesignated - Abo		Dedicated Acreage: 160 Acres	

1. Outline the acreage dedicated to the subject well by colored pencil or hatchure marks on the plat below.
2. If more than one lease is dedicated to the well, outline each and identify the ownership thereof (both as to working interest and royalty). Single Lease
3. If more than one lease of different ownership is dedicated to the well, have the interests of all owners been consolidated by communitization, unitization, force-pooling, etc?

☐ Yes ☐ No If answer is "yes," type of consolidation _____

If answer is "no," list the owners and tract descriptions which have actually been consolidated. (Use reverse side of this form if necessary.) _____

No allowable will be assigned to the well until all interests have been consolidated (by communitization, unitization, forced-pooling, or otherwise) or until a non-standard unit, eliminating such interests, has been approved by the Division.



CERTIFICATION

I hereby certify that the information contained herein is true and complete to the best of my knowledge and belief.

Name

Jerry W. Long
JERRY W. LONG

Position

Agent

Company

Sanders Oil & Gas Co.

Date

October 8, 1984

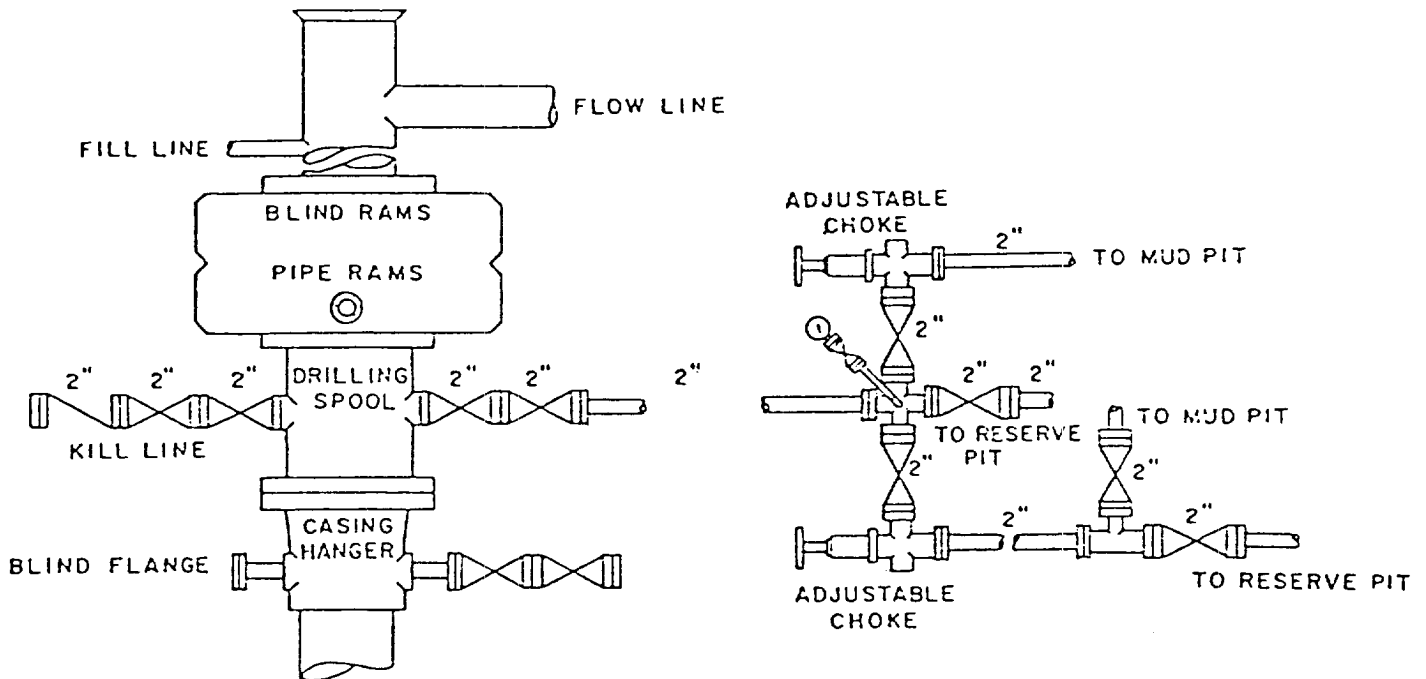
I hereby certify that the well location shown on this plot was plotted from field notes of actual surveys made by me or under my supervision, and that the same is true and correct to the best of my knowledge and belief.

Date

October 8, 1984

Registered Professional Engineer
and Land SurveyorCertificate No.
N. Mex. 7929

SANDERS OIL & GAS COMPANY
No.1 Bacil
NE $\frac{1}{4}$ NW $\frac{1}{4}$ Sec.27-9S-24E
Chaves County, N.M.



BOP DIAGRAM

3000# Working Pressure
Rams Operated Daily

SUPPLEMENTAL DRILLING DATA

SANDERS OIL & GAS COMPANY

No.1 Bacil

NE $\frac{1}{4}$ NW $\frac{1}{4}$ Sec.27-9S-24E

Chaves County, N.M.

NM 37597

The following items supplement Form 3160-3 in accordance with Onshore Oil and Gas Order No.1:

1. SURFACE FORMATION: Seven Rivers

2. ESTIMATED TOPS OF GEOLOGIC MARKERS:

Seven Rivers	-	Surface	Tubb	-	2800'
San Andres	-	350'	Abo	-	3500'
Glorieta	-	1300'			

3. ESTIMATED DEPTHS TO WATER, OIL OR GAS FORMATIONS:

Fresh Water	-	Surface to 950'
Salt Water	-	950' to TD 4000'
Gas	-	3400' to TD 4000'

4. PROPOSED CASING PROGRAM:

8-5/8" Casing - 24.0#, K-55 at 975' - Cement circulated

4-1/2" Casing - 10.5#, J-55 at 4000' - Cemented with
1st Stage 4000' to 2800'
2nd Stage 1500' to 795'

5. PRESSURE CONTROL EQUIPMENT: Bop stack will consist of double-ram BOP rated at 3000#WP. A sketch of the BOP is attached. Mud additives will be used to control bottom-hole pressure.

6. CIRCULATING MEDIUM: Mud will be used as the circulating medium. Fresh water mud will be used to about 975'. Salt gel mud will be used from the surface casing shoe to TD.

7. AUXILIARY EQUIPMENT: Full-opening kelly cock, to fit the drill string in use, will be kept on the rig floor at all times.

SANDERS OIL & GAS COM. NY
No.1 Bacil
NE $\frac{1}{4}$ NW $\frac{1}{4}$ Sec.27-9S-24E
Chaves County, N.M.

N.M. 1
8602

Fig 80

12

N.M. 16070 US

State

State

N.M. 1
8602

N.M. 33943
N.M. 6025 US

16

15

14

13

State

N.M. 33943
N.M. 6025 US

N.M. 33943
N.M. 6025 US

N.M. 33943
N.M. 6025 US

N.M. 33943
N.M. 6025 US

N.M. 33943
N.M. 6025 US

21

22

23

24

State

N.M. 33943
N.M. 6025 US

N.M. 33943
N.M. 6025 US

N.M. 33943
N.M. 6025 US

MESA

N.M. 33944
N.M. 6025 US

N.M. 33944
N.M. 6025 US

SANDERS
No.1 Bacil

MESA
No.1 Karen

28

27

N.M. 16071
26

25

State

N.M. 37597

N.M. 33943
N.M. 6025 US

N.M. 16071

N.M. 16071

33

34

35

36

U. S.

N.M. 16071

State

33

34

35

36 State

N.M. 5203
N.M. 31362

EXHIBIT E
Lease Map