

UNRECORDED STATES
DEPARTMENT OF THE INTERIOR
BUREAU OF LAND MANAGEMENT

APPLICATION FOR PERMIT TO DRILL, DEEPEN, OR PLUG BACK

1a. TYPE OF WORK

DRILL ☒

ARTESIA, OFFICE
DEEPEN ☒

PLUG BACK ☐

b. TYPE OF WELL

OIL
WELL ☒

GAS
WELL ☐

OTHER

SINGLE
ZONE ☐

MULTIPLE
ZONE ☐

2. NAME OF OPERATOR

STEVENS OPERATING CORPORATION

3. ADDRESS OF OPERATOR

P. O. Box 2203, Roswell, New Mexico 88201

4. LOCATION OF WELL (Report location clearly and in accordance with any State requirements.)
At surface

1650 FNL 990 FWL, Sec. 33, T-7-S, R-26-E

At proposed prod. zone Same

14. DISTANCE IN MILES AND DIRECTION FROM NEAREST TOWN OR POST OFFICE*

23.5 airmiles northeast of Roswell, New Mexico

15. DISTANCE FROM PROPOSED*

LOCATION TO NEAREST
PROPERTY OR LEASE LINE, FT.
(Also to nearest drlg. unit line, if any)

16. NO. OF ACRES IN LEASE

600

17. NO. OF ACRES ASSIGNED

TO THIS WELL 40

18. DISTANCE FROM PROPOSED LOCATION*

TO NEAREST WELL, DRILLING, COMPLETED,
OR APPLIED FOR, ON THIS LEASE, FT.

19. PROPOSED DEPTH

1300'

20. ROTARY OR CABLE TOOLS

Rotary

21. ELEVATIONS (Show whether DF, RT, GR, etc.)

3697 GR.

22. APPROX. DATE WORK WILL START*

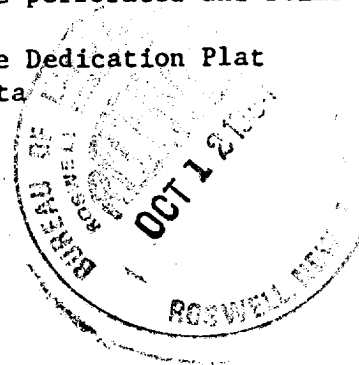
October 29, 1984

23. PROPOSED CASING AND CEMENTING PROGRAM

SIZE OF HOLE	SIZE OF CASING	WEIGHT PER FOOT	SETTING DEPTH	QUANTITY OF CEMENT
9 7/8"	7"	17.0	120'	Circulate to Surface
6 1/2"	2 7/8"	6.5	1300'	500 feet above pay

Well will be drilled to total depth with air, foam, or mud, as conditions warrant. The hole will be logged. If commercial production is indicated 2 7/8" tubing will be run and cemented, potential pay zones will be perforated and stimulated as needed.

Attached are: Well Location and Acreage Dedication Plat
Supplemental Drilling Data
Surface Use Plan



IN ABOVE SPACE DESCRIBE PROPOSED PROGRAM: If proposal is to deepen or plug back, give data on present productive zone and proposed new productive zone. If proposal is to drill or deepen directionally, give pertinent data on subsurface locations and measured and true vertical depths. Give blowout preventer program, if any.

24.

SIGNED

John V. Walker

TITLE

geologist

DATE

Oct 11, 1984

(This space for Federal or State office use)

PERMIT NO.

APPROVAL DATE

APPROVED BY

Sybil Kirk

TITLE

Area Manager

DATE

10-22-84

CONDITIONS OF APPROVAL, IF ANY:

*See Instructions On Reverse Side

All distances must be from the outer boundaries of the Section.

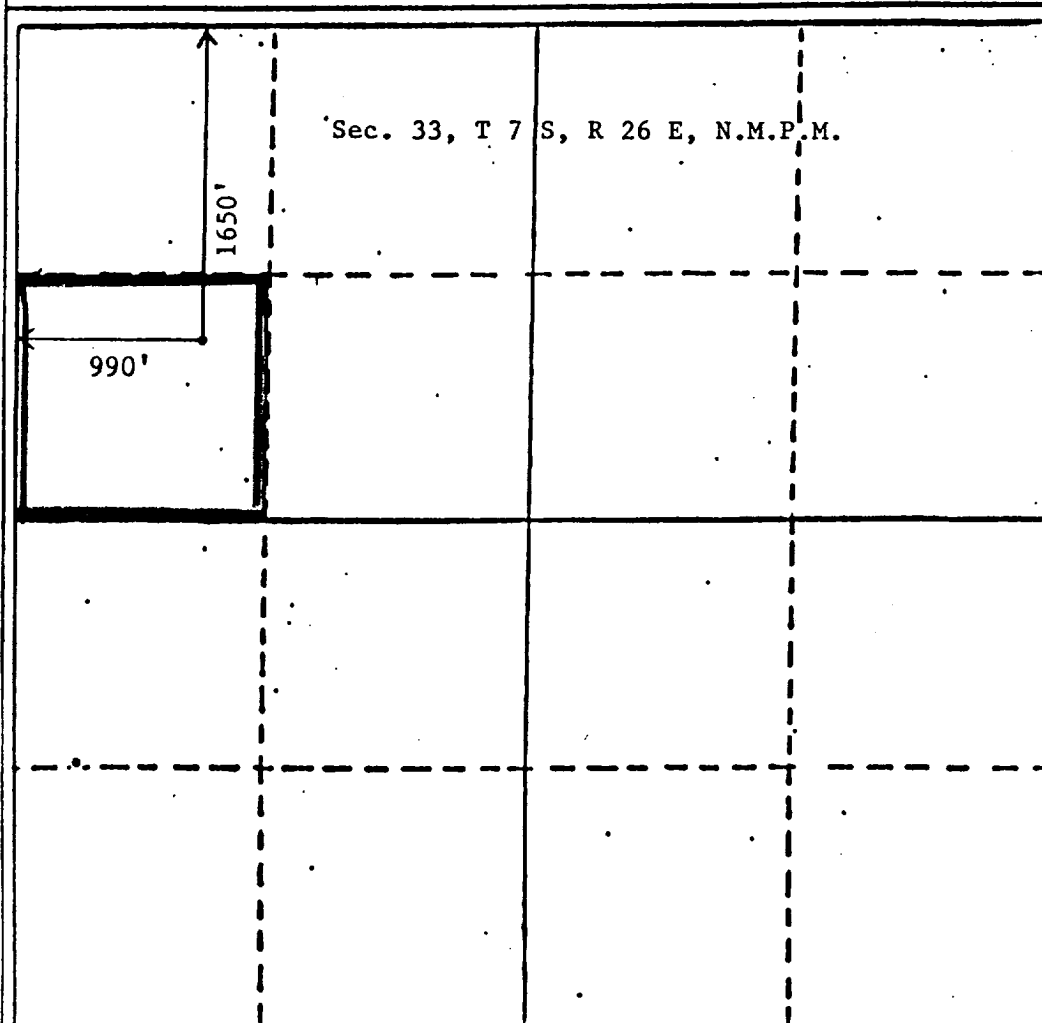
Operator Stevens Operating Corp.		Lease Nichols/Dale Federal		Well No. 9
Unit Letter E	Section 33	Township 7 South	Range 26 East	County Chaves
Actual Postage Location of Well 1650 feet from the FNL line and 990 feet from the FWL line				
Ground Level Elev. 3697'	Producing Formation San Andres	Pool Pecos San Andres	Dedicated Acreage 40 Acres	

1. Outline the acreage dedicated to the subject well by colored pencil or hatchure marks on the plat below.
2. If more than one lease is dedicated to the well, outline each and identify the ownership thereof (both as to working interest and royalty).
3. If more than one lease of different ownership is dedicated to the well, have the interests of all owners been consolidated by communitization, unitization, force-pooling, etc?

☐ Yes ☐ No If answer is "yes;" type of consolidation _____

If answer is "no," list the owners and tract descriptions which have actually been consolidated. (Use reverse side of this form if necessary.) _____

No allowable will be assigned to the well until all interests have been consolidated (by communitization, unitization, forced-pooling, or otherwise) or until a non-standard unit, eliminating such interests, has been approved by the Division



CERTIFICATION

I hereby certify that the information contained herein is true and complete to the best of my knowledge and belief.

Name
Geologist
Position
Stevens Operating Corp.
Company
October 12, 1984
Date

I hereby certify that the well location shown on this plat was plotted from field notes of actual surveys made by me or under my supervision, and that the same is true and correct to the best of my knowledge and belief.

Date Surveyed
October 11, 1984
New Mexico Professional Engineer and/or Land Surveyor
John D. Jaquess
E. & L.S.
Certificate No. 6290

SUPPLEMENTAL DRILLING DATA

STEVENS OPERATING CORPORATION
Well #9 NICHOLS DALE FEDERAL
1650 FNL 990 FWL, Sec. 33, T-7-S R-26-E
CHAVES COUNTY, NEW MEXICO

1. SURFACE FORMATION: Permian (Artesia Group)

2. ESTIMATED TOPS OF GEOLOGIC MARKERS:

San Andres	640'	P-1	1125'
P-2	1210'	TD	1300'

3. ANTICIPATED POROSITY ZONES:

Water	60'
Oil	1210'

4. CASING DESIGN:

<u>Size</u>	<u>Interval</u>	<u>Weight</u>	<u>Grade</u>	<u>Joint</u>	<u>Condition</u>
7"	0 - 120'	17.0#	H	STC	Used
2 7/8"	0 - 1300'	6.4#	H	STC	Used

5. SURFACE CONTROL EQUIPMENT: None

6. CIRCULATING MEDIUM:

0 - 1300 Air or Foam if hole conditions warrant salt gel, mud will be used if required.

7. AUXILIARY EQUIPMENT: None Planned.

8. TESTING, LOGGING AND CORING PROGRAMS:

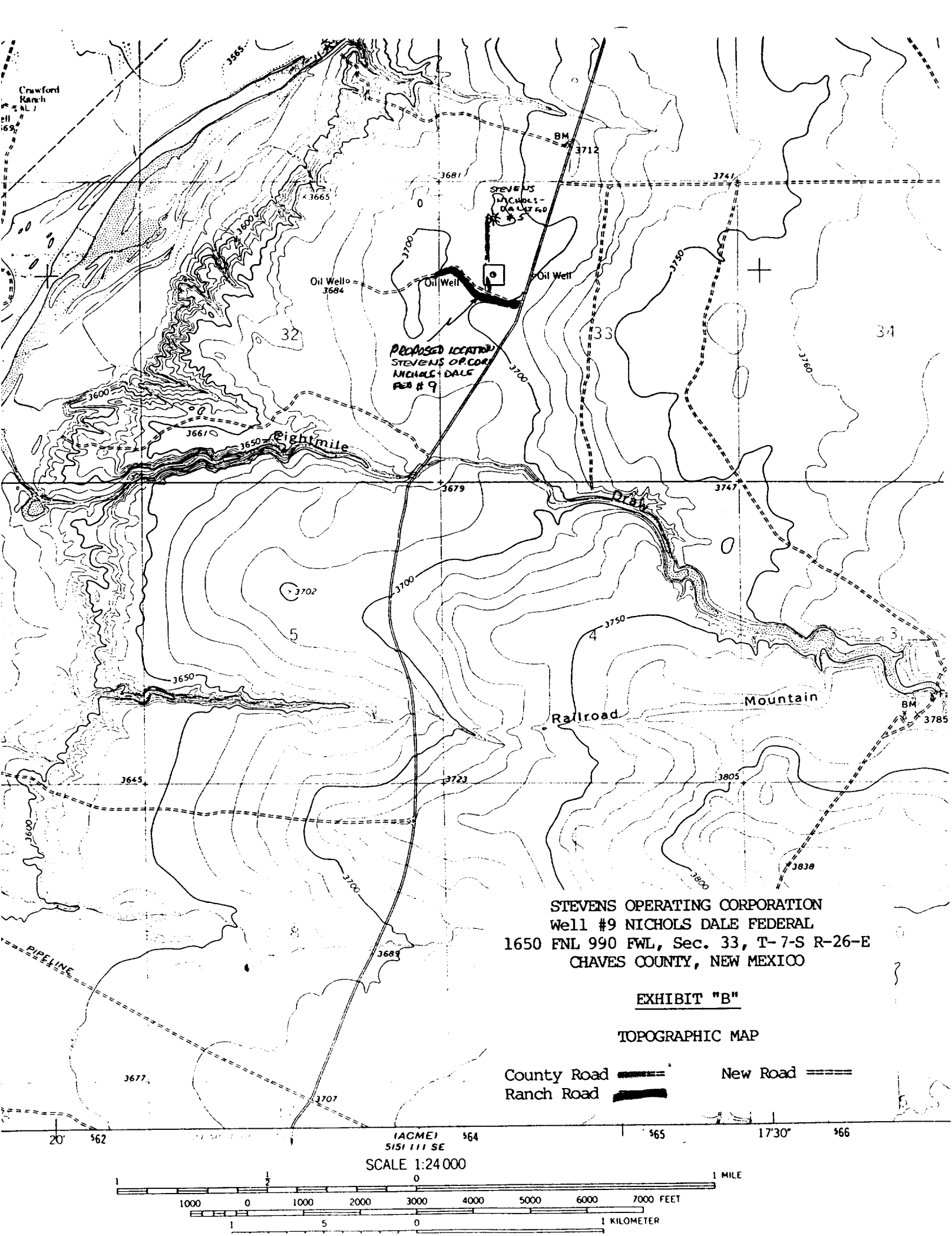
DST's - None Planned.

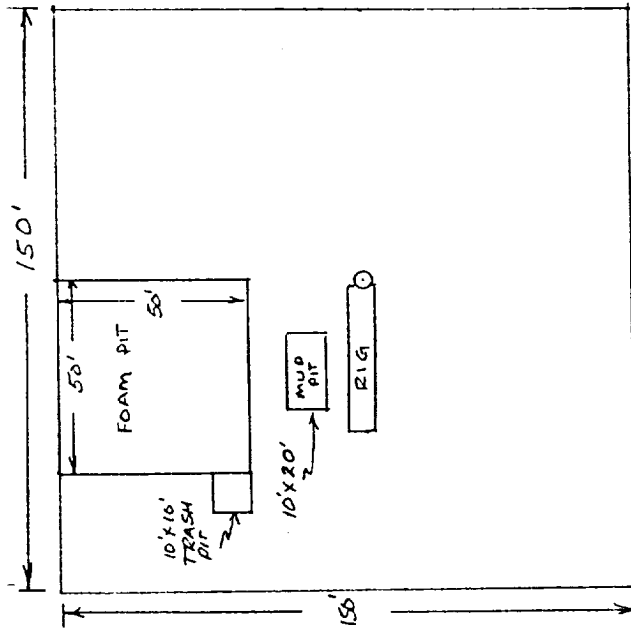
Coring - Non Planned.

Logging - A Gamma-Ray/Sonic

9. ABNORMAL PRESSURES, TEMPERATURES OR GASES: None anticipated.

10. ANTICIPATED DATES: It is planned that drilling operations will commence about October 29, 1984, drilling and completion operations will require 20 to 60 days.





STEVENS OPERATING CORPORATION
 Well #9 NICHOLS DALE FEDERAL
 1650 FNL 990 FWL, Sec. 33, T- 7-S R-26-E
 CHAVES COUNTY, NEW MEXICO

EXHIBIT "D"

SKETCH OF WELL PAD