

UNITED STATES  
DEPARTMENT OF THE INTERIOR

## GEOLOGICAL SURVEY

30-005-62215

5. LEASE DESIGNATION AND SERIAL NO.

NM-29208

6. IF INDIAN, ALLOTTEE OR TRIBE NAME

7. UNIT AGREEMENT NAME

8. FARM OR LEASE NAME

Rick Com Fed

9. WELL NO.

1

10. FIELD AND POOL, OR WILDCAT

South Pecos Slope Abo

11. SEC., T., R., M., OR BLK.  
AND SURVEY OR AREA

Sec. 26-T9S-R25E

12. COUNTY OR PARISH

Chaves

13. STATE

NM

1a. TYPE OF WORK

DRILL ☒DEEPEEN ☐ RECEIVED BY PLUG BACK ☐

b. TYPE OF WELL

OIL  
WELL ☐GAS  
WELL ☒

OTHER

2. NAME OF OPERATOR

McClellan Oil Corporation ✓

3. ADDRESS OF OPERATOR

P.O. Drawer 730, Roswell, NM 88201

4. LOCATION OF WELL (Report location clearly and in accordance with any State requirements.)\*

At surface

1980' FNL &amp; 660' FEL

At proposed prod. zone

14. DISTANCE IN MILES AND DIRECTION FROM NEAREST TOWN OR POST OFFICE\*

14 miles East of Roswell, NM

15. DISTANCE FROM PROPOSED\*

LOCATION TO NEAREST  
PROPERTY OR LEASE LINE, FT.  
(Also to nearest drlg. unit line, if any)

660'

16. NO. OF ACRES IN LEASE

240

17. NO. OF ACRES ASSIGNED  
TO THIS WELL

160

18. DISTANCE FROM PROPOSED LOCATION\*

TO NEAREST WELL, DRILLING, COMPLETED,  
OR APPLIED FOR, ON THIS LEASE, FT.

NA

19. PROPOSED DEPTH

4500'

20. ROTARY OR CABLE TOOLS

Rotary

21. ELEVATIONS (Show whether DF, RT, GR, etc.)

3591' G.L.

22. APPROX. DATE WORK WILL START\*

Nov. 24, 1984

23.

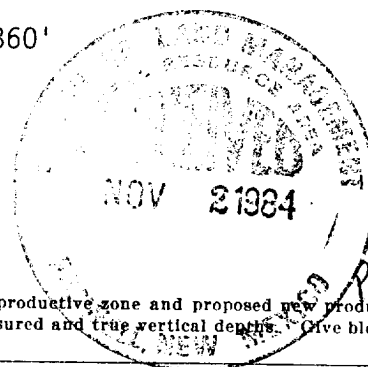
## PROPOSED CASING AND CEMENTING PROGRAM

SIZE OF HOLE	SIZE OF CASING	WEIGHT PER FOOT	SETTING DEPTH	QUANTITY OF CEMENT
12-1/4"	8-5/8"	24#	900'	500 sx Circulated
7-7/8"	4-1/2"	10.5#	4500'	300 sx

Propose to drill to approximately 4500' to test the Abo formation. If production is indicated, will run casing and attempt completion.

Estimated geologic tops: San Andres: 515' Tubb: 3120'  
Glorieta: 1630' Abo: 3860'

Gas is dedicated.



IN ABOVE SPACE DESCRIBE PROPOSED PROGRAM: If proposal is to deepen or plug back, give data on present productive zone and proposed new productive zone. If proposal is to drill or deepen directionally, give pertinent data on subsurface locations and measured and true vertical depths. Give blowout preventer program, if any.

24.

SIGNED

Mark McClellan

TITLE

Geologist

DATE

Nov. 1, 1984

(This space for Federal or State office use)

PERMIT NO.

APPROVAL DATE

S/Phil Kirk

APPROVED BY

TITLE

Area Manager

DATE

11-20-84

CONDITIONS OF APPROVAL, IF ANY:

\*See Instructions On Reverse Side

All distances must be from the outer boundaries of the Section.

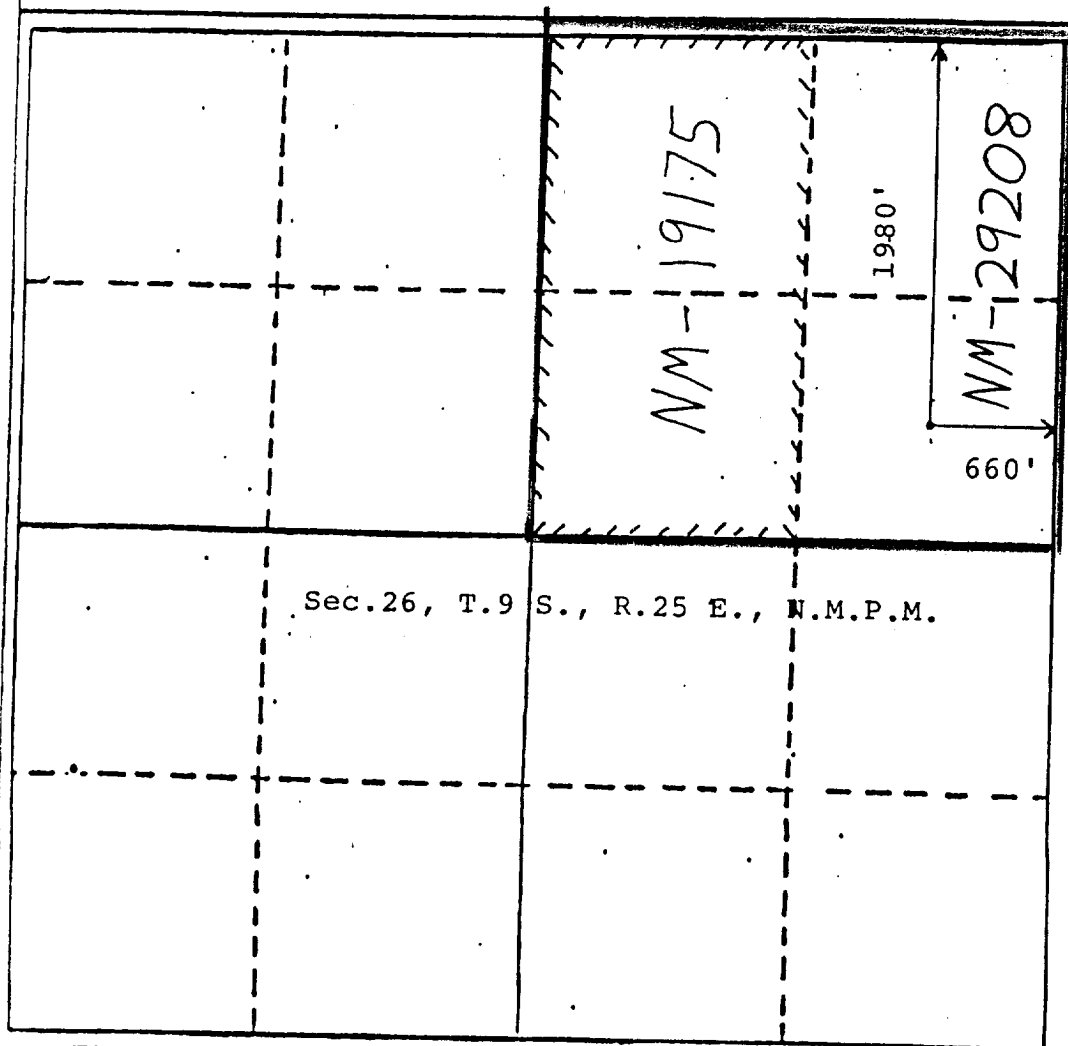
Operator <b>McClellan Oil Corp.</b>		Lease <b>Rick Federal Com</b>		Well No. <b>#1</b>
Unit Letter <b>H</b>	Section <b>26</b>	Township <b>9 South</b>	Range <b>25 East</b>	County <b>Chaves</b>
Actual Wellbore Location of Well <b>1980</b> feet from the <b>North</b> line and <b>660</b> feet from the <b>East</b> line				
Ground Level Elev. <b>3591</b>	Producing Formation <b>Abo</b>	Pool <b>South Pecos Slope Abo</b>	Dedicated Acreage <b>160</b> Acres	

1. Outline the acreage dedicated to the subject well by colored pencil or hatchure marks on the plat below.
2. If more than one lease is dedicated to the well, outline each and identify the ownership thereof (both as to working interest and royalty).
3. If more than one lease of different ownership is dedicated to the well, have the interests of all owners been consolidated by communitization, unitization, force-pooling, etc?

☒ Yes ☐ No If answer is "yes," type of consolidation Communitization

If answer is "no," list the owners and tract descriptions which have actually been consolidated. (Use reverse side of this form if necessary.)

No allowable will be assigned to the well until all interests have been consolidated (by communitization, unitization, forced-pooling, or otherwise) or until a non-standard unit, eliminating such interests, has been approved by the Division



## CERTIFICATION

I hereby certify that the information contained herein is true and complete to the best of my knowledge and belief.

*Mark McClellan*

Name

Mark McClellan

Position

Geologist

Company

McClellan Oil Corporation

Date

October 31, 1984

I hereby certify that the well location shown on this plat was plotted from field notes of actual surveys made by me or under my supervision, and that the same is true and correct to the best of my knowledge and belief.

JOHN D. JAGGESS  
NEW MEXICO

Date Surveyed

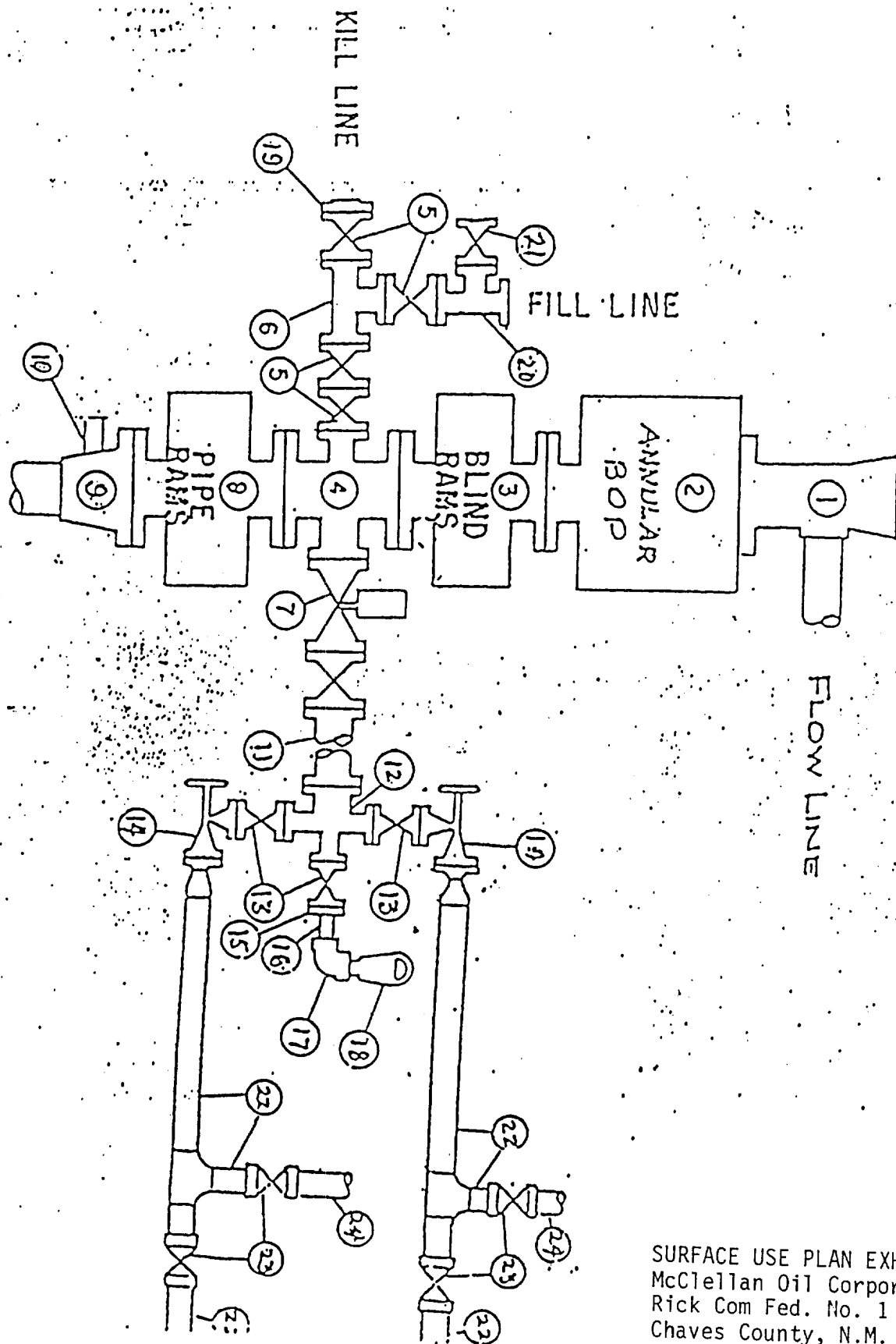
October 6, 1984

Registered Professional Engineer and/or Professional Geologist

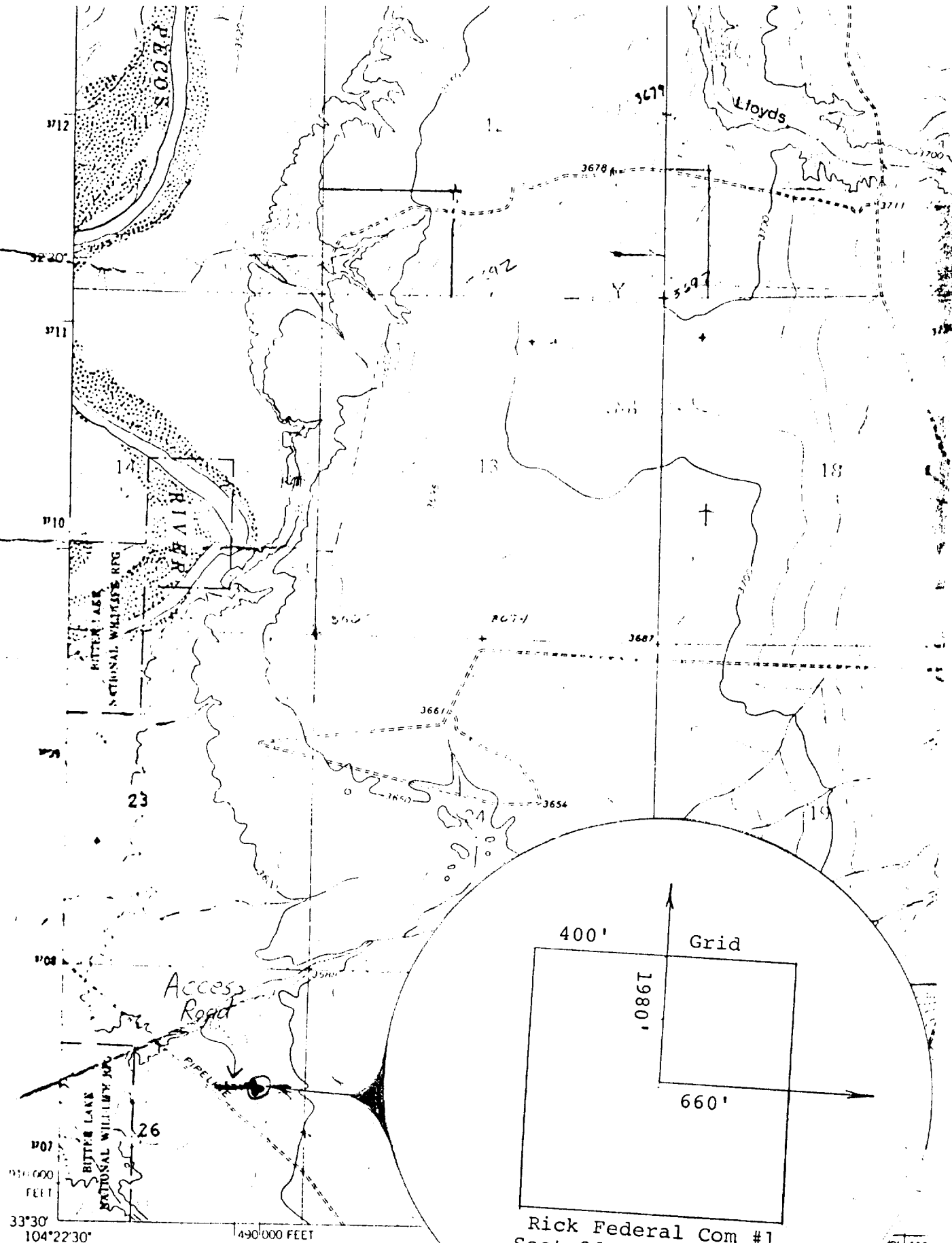
*John D. Jagless*  
John D. Jagless, P.E. & L.S.

Certificate No.

6290



SURFACE USE PLAN EXHIBIT "E"  
 McClellan Oil Corporation  
 Rick Com Fed. No. 1  
 Chaves County, N.M.



Mapped, edited, and published by the Geological  
Control by USGS and USC&GS

Topography by photogrammetric methods from aerial  
photographs taken 1961. Field checked 1962

Polyconic projection. 1927 North American datum  
10,000 foot grid based on New Mexico coordinate system, east zone

Rick Federal Com #1  
Sect 26, T.9S., R.25E.  
1980 FNL, 660 FEET

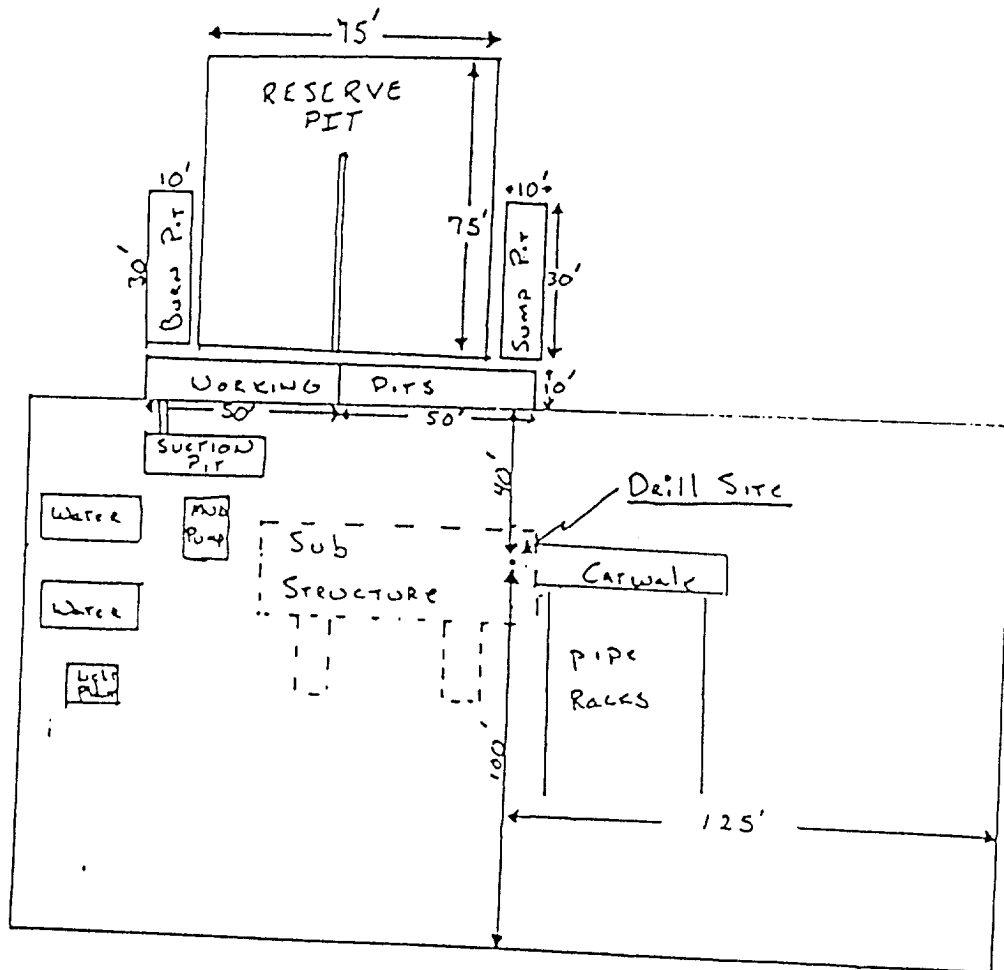
SURFACE USE PLAN EXHIBIT "B"  
McClellan Oil Corporation  
Rick Com Fed. No. 1  
Chaves County, N.M.

McCLELLAN OIL CORPORATION  
SUGGESTED PAD DIMENSIONS

Reserve Pits 4 ft. deep, plastic lined

Working pits 5 ft. deep

No cellar



Scale 1" = 50'

SURFACE USE PLAN EXHIBIT "D"  
McClellan Oil Corporation  
Rick Com Fed. No. 1  
Chaves County, N.M.