

clsr

UNITED STATES
 DEPARTMENT OF THE INTERIOR
 GEOLOGICAL SURVEY

30-005-62216

APPLICATION FOR PERMIT TO DRILL, DEEPEN, OR PLUG BACK

5. LEASE DESIGNATION AND SERIAL NO.
 NM-11596

6. IF INDIAN, ALLOTTEE OR TRIBE NAME

7. UNIT AGREEMENT NAME

8. FARM OR LEASE NAME
 PJ Fed.

9. WELL NO.
 4

10. FIELD AND POOL, OR WILDCAT
 South Pecos Slope Abo

11. SEC., T., R., M., OR BLK. AND SURVEY OR AREA
 Sec. 7-T9S-R26E

12. COUNTY OR PARISH
 Chaves

13. STATE
 NM

1a. TYPE OF WORK
 DRILL DEEPEN PLUG BACK

b. TYPE OF WELL
 OIL WELL GAS WELL OTHER

2. NAME OF OPERATOR
 McClellan Oil Corporation

3. ADDRESS OF OPERATOR
 P.O. Drawer 730, Roswell, NM 88202

4. LOCATION OF WELL (Report location clearly and in accordance with any State requirements.)*
 At surface
 1980' FSL & 660' FWL
 At proposed prod. zone

14. DISTANCE IN MILES AND DIRECTION FROM NEAREST TOWN OR POST OFFICE*
 17 miles Northeast of Roswell, NM

15. DISTANCE FROM PROPOSED* LOCATION TO NEAREST PROPERTY OR LEASE LINE, FT. (Also to nearest drig. unit line, if any)
 660'

16. NO. OF ACRES IN LEASE
 872.16 MOL

17. NO. OF ACRES ASSIGNED TO THIS WELL
 160

18. DISTANCE FROM PROPOSED LOCATION* TO NEAREST WELL, DRILLING, COMPLETED, OR APPLIED FOR, ON THIS LEASE, FT.
 3508'

19. PROPOSED DEPTH
 4600'

20. ROTARY OR CABLE TOOLS
 Rotary

21. ELEVATIONS (Show whether DF, RT, GR, etc.)
 3686' G.L.

22. APPROX. DATE WORK WILL START*
 Nov. 15, 1984

RECEIVED BY
 NOV 27 1984
 O. C. D.
 ARTESIA, OFFICE

wt. h

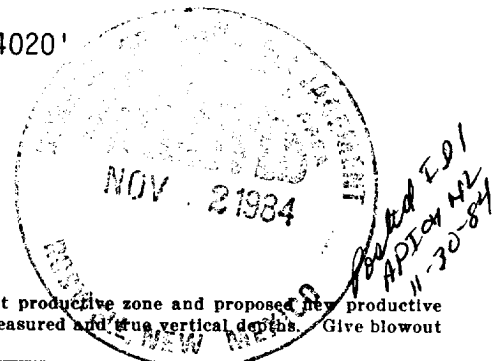
PROPOSED CASING AND CEMENTING PROGRAM

SIZE OF HOLE	SIZE OF CASING	WEIGHT PER FOOT	SETTING DEPTH	QUANTITY OF CEMENT
12-1/4"	8-5/8"	23#	900'	500 sx Circulated
7-7/8"	4-1/2"	10.5#	4600'	300 sx

Propose to drill to approximately 4600' to test the Abo formation. If production is indicated, will set casing and attempt completion.

Estimated geologic tops: San Andres: 680' Tubb: 3280'
 Glorieta: 1780' Abo: 4020'

Gas is dedicated.



IN ABOVE SPACE DESCRIBE PROPOSED PROGRAM: If proposal is to deepen or plug back, give data on present productive zone and proposed new productive zone. If proposal is to drill or deepen directionally, give pertinent data on subsurface locations and measured and true vertical depths. Give blowout preventer program, if any.

24. SIGNED Mark McClellan TITLE Geologist DATE Nov. 1, 1984

(This space for Federal or State office use)

PERMIT NO. _____ APPROVAL DATE _____

APPROVED BY S/Phil Kirk TITLE Area Manager DATE 11-20-84

CONDITIONS OF APPROVAL, IF ANY:

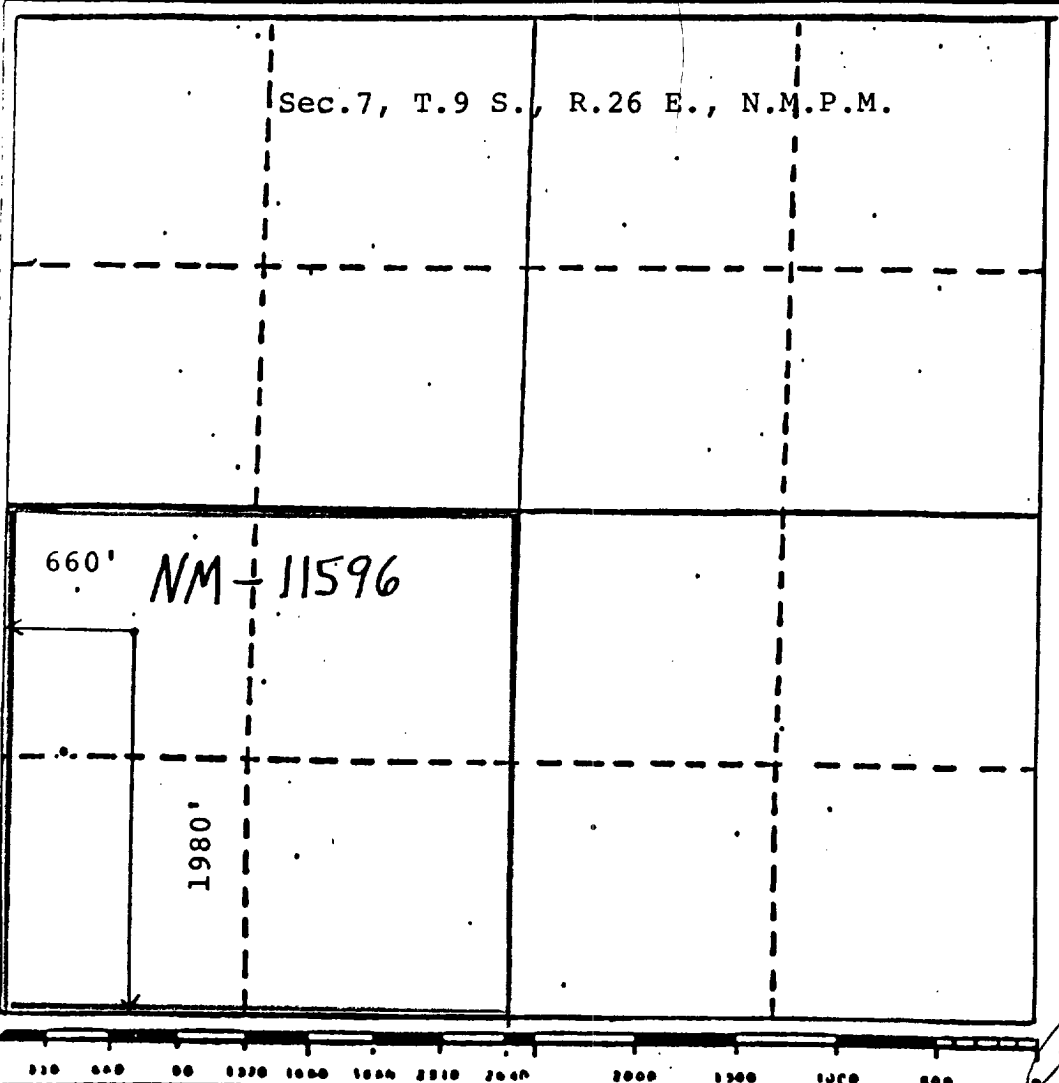
Area 156.93

All distances must be from the outer boundaries of the Section.

Operator McClellan Oil Corp.		Lessee P.J. Federal		Well No. #4
Unit Listed L	Section 7	Township 9 South	Range 26 East	County Chaves
Actual Wellbore Location of Well				
1980 feet from the South line and		660 feet from the West line		
Ground Level Elev. 3686	Producing Formation Abo	Pool South Pecos Slope Abo	Dedicated Acreage 156.93 160	

1. Outline the acreage dedicated to the subject well by colored pencil or hachure marks on the plat below.
2. If more than one lease is dedicated to the well, outline each and identify the ownership thereof (both as to working interest and royalty).
3. If more than one lease of different ownership is dedicated to the well, have the interests of all owners been consolidated by communitization, unitization, force-pooling, etc?
 Yes No If answer is "yes," type of consolidation _____

If answer is "no," list the owners and tract descriptions which have actually been consolidated. (Use reverse side of this form if necessary.) _____
 No allowable will be assigned to the well until all interests have been consolidated (by communitization, unitization, forced-pooling, or otherwise) or until a non-standard unit, eliminating such interests, has been approved by the Division



CERTIFICATION

I hereby certify that the information contained herein is true and complete to the best of my knowledge and belief.

Mark McClellan

Name
Mark McClellan

Position
Geologist

Company
McClellan Oil Corporation

Date
October 31, 1984

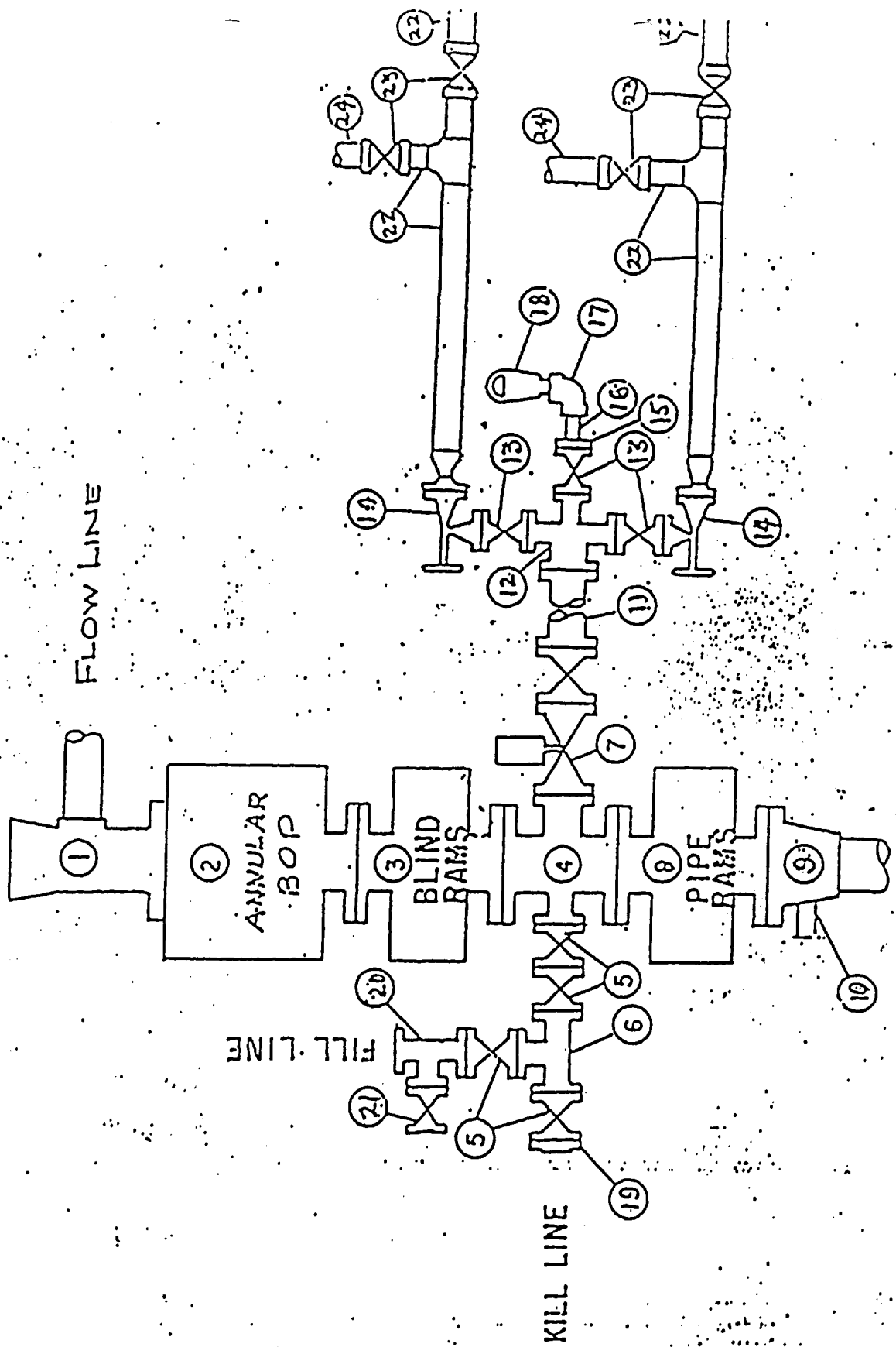
I hereby certify that the well location shown on this plat was plotted from field notes of actual surveys made by me or under my supervision, and that the same is true and correct to the best of my knowledge and belief.

JOHN D. JAQUESS
NEW MEXICO
PROFESSIONAL ENGINEER

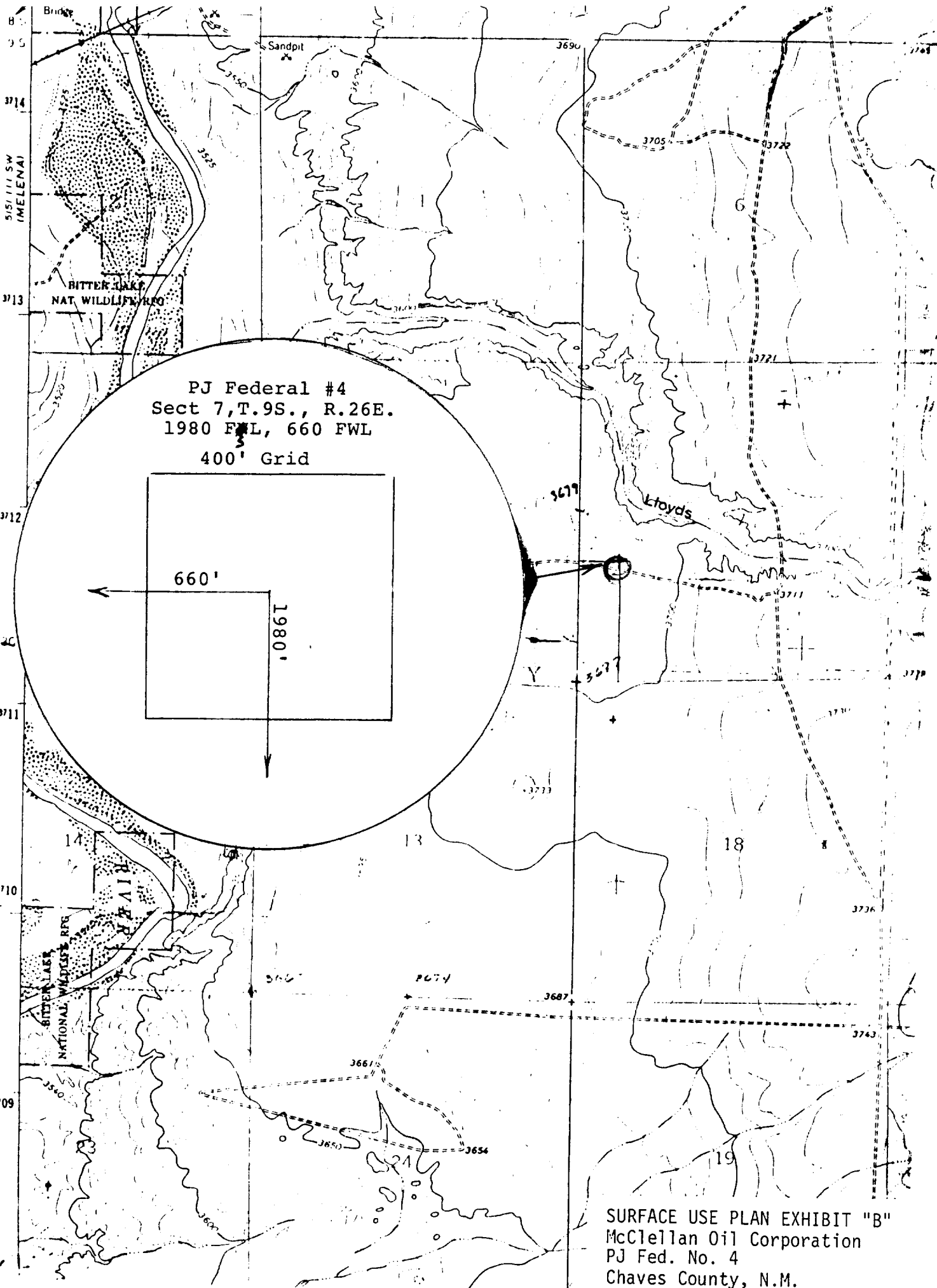
Date Surveyed
October 30, 1984

Registered Professional Engineer and/or Land Surveyor
John D. Jaquess, P.E. & L.S.

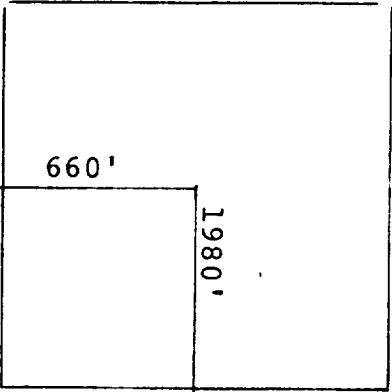
Certificate No.
6290



SURFACE USE PLAN EXHIBIT "E"
 McClellan Oil Corporation
 PJ Fed. No. 4
 Chaves County, N.M.



PJ Federal #4
Sect 7, T.9S., R.26E.
1980 FWL, 660 FWL
400' Grid



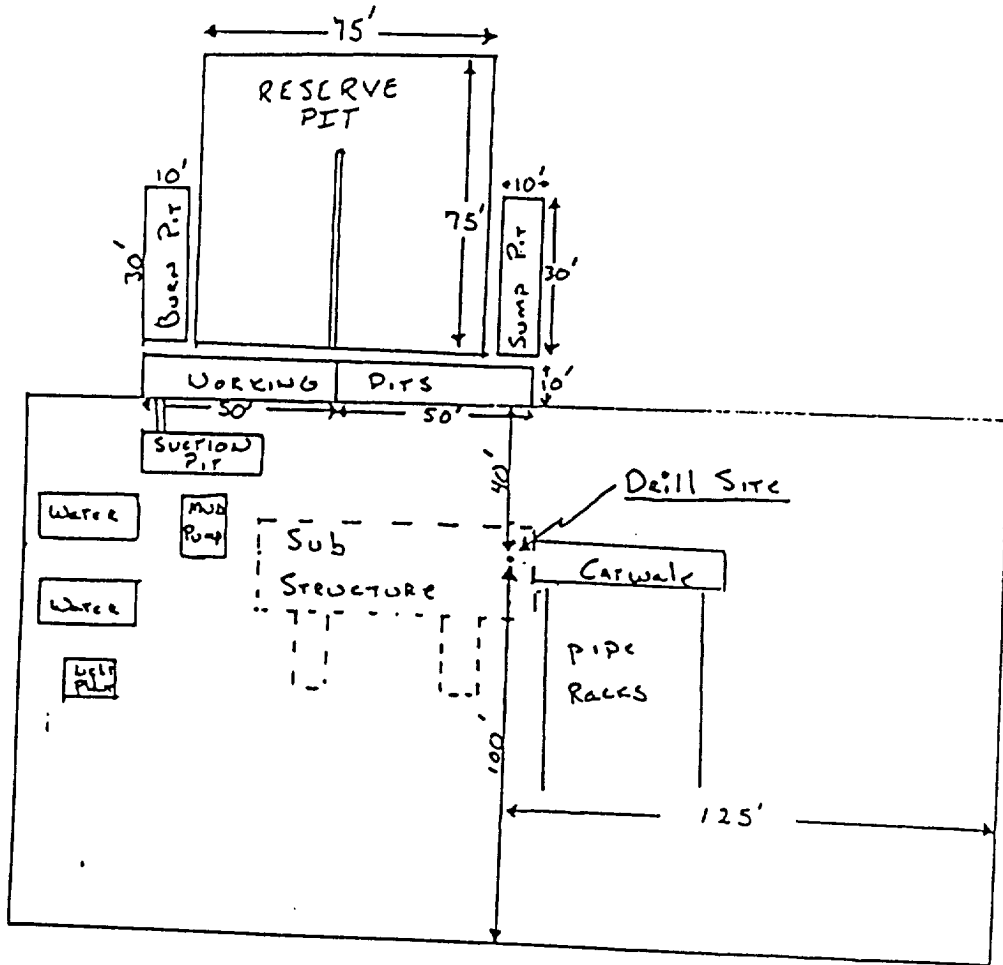
SURFACE USE PLAN EXHIBIT "B"
McClellan Oil Corporation
PJ Fed. No. 4
Chaves County, N.M.

McGLELLAN OIL CORPORATION
SUGGESTED PAD DIMENSIONS

Reserve Pits 4 ft. deep, plastic lined

Working pits 5 ft. deep

No cellar



Scale 1" = 50'