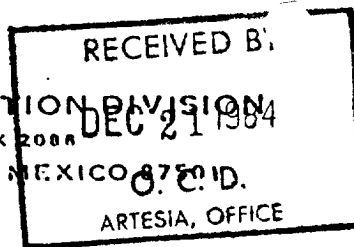


STATE OF NEW MEXICO  
ENERGY AND MINERALS DEPARTMENT

OIL CONSERVATION DIVISION  
P. O. BOX 2088  
SANTA FE, NEW MEXICO 87501  
O.C.D.  
ARTESIA, OFFICE

Form C-101 30-005-62223  
Revised 10-1-78



NO. OF COPIES RECEIVED	
DISTRIBUTION	
SANTA FE	✓
FILE	✓
U.S.G.S.	2
LAND OFFICE	
OPERATOR	✓

5A. Indicate Type of Lease  
STATE ☐ FEDERAL ☒

5. State Oil & Gas Lease No.  
N/A

7. Unit Agreement Name  
N/A

8. Name of Lease Name  
O'Brien "LLL"

9. Well No.  
2

10. Field and Pool, or Wildcat  
X Red Lake Ridge San Andres

12. County  
Chaves

APPLICATION FOR PERMIT TO DRILL, DEEPEN, OR PLUG BACK

Type of Work  
Type of Well DRILL ☒ DEEPEN ☐ PLUG BACK ☐  
OIL WELL ☒ GAS WELL ☐ OTHER ☐ SINGLE ZONE ☐ MULTIPLE ZONE ☐

Name of Operator  
Stevens Operating Corporation

Address of Operator  
P. O. Box 2203 Roswell, New Mexico 88201

Location of Well  
UNIT LETTER K LOCATED 1980 FEET FROM THE South LINE  
1980 FEET FROM THE West LINE OF SEC. 21 TWP. 8-S R. 29-E

19. Proposed Depth 3000'  
19A. Formation San Andres  
20. Rotary or C.T. Rotary

21A. Kind & Status Plug. Bond Statewide  
21B. Drilling Contractor Desert Drilling  
22. Approx. Date Work will start 12-28-84

PROPOSED CASING AND CEMENT PROGRAM

SIZE OF HOLE	SIZE OF CASING	WEIGHT PER FOOT	SETTING DEPTH	SACKS OF CEMENT	EST. TOP
12 1/4	8 5/8	23.0#	380'	circ to surface.	
7 7/8	5 1/2	15.5#	3000'	250	

Well will be drilled with water and mud to TD, logged, and if indicated productive, cased to TD & perforated in potential productive intervals.

Adequate Blowout Preventers will be used.

APPROVAL VALID FOR 180 DAYS  
PERMIT EXPIRES 6-28-85  
UNLESS DRILLING UNDERWAY

ABOVE SPACE DESCRIBE PROPOSED PROGRAM; IF PROPOSAL IS TO DEEPEN OR PLUG BACK, GIVE DATA ON PRESENT PRODUCTIVE ZONE AND PROPOSED NEW PRODUCTIVE ZONE. GIVE BLOWOUT PREVENTER PROGRAM, IF ANY.

I hereby certify that the information above is true and complete to the best of my knowledge and belief.

Signed Mike Williams Title Production Controller Date 12-21-84

(This space for State Use)

Original Signed By  
Mike Williams  
Oil & Gas Inspector  
APPROVED BY  
DATE DEC 27 1984

**MEXICO OIL CONSERVATION COMMISSION  
WELL LOCATION AND ACREAGE DEDICATION PLAT**

Form C-102  
Supersedes C-128  
Effective 1-1-65

All distances must be from the outer boundaries of the Section.

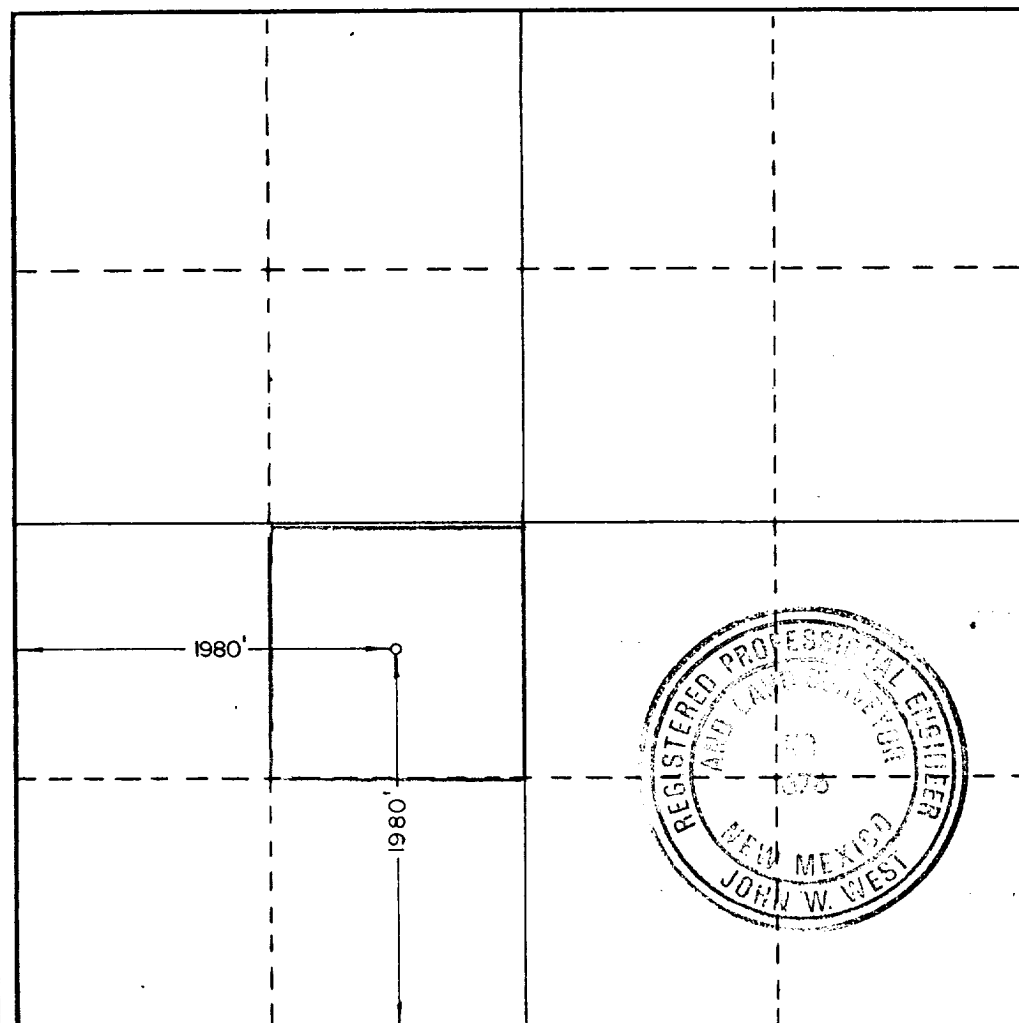
Operator <b>STEVENS OPERATING CO.</b>			Lease <b>O'BRIEN "LLL"</b>		Well No. <b>2</b>
Unit Letter <b>K</b>	Section <b>21</b>	Township <b>8S</b>	Range <b>29E</b>	County <b>CHAVES</b>	
Actual Footage Location of Well: <b>1980</b> feet from the <b>WEST</b> line and <b>1980</b> feet from the <b>SOUTH</b> line					
Ground Level Elev. <b>3943.7</b>	Producing Formation <b>San Andres</b>	Pool <b>Red Lake Ridge San Andres</b>		Dedicated Acreage: <b>40</b> Acres	

1. Outline the acreage dedicated to the subject well by colored pencil or hachure marks on the plat below.
2. If more than one lease is dedicated to the well, outline each and identify the ownership thereof (both as to working interest and royalty).
3. If more than one lease of different ownership is dedicated to the well, have the interests of all owners been consolidated by communitization, unitization, force-pooling, etc?

☐ Yes    ☐ No    If answer is "yes," type of consolidation \_\_\_\_\_

If answer is "no," list the owners and tract descriptions which have actually been consolidated. (Use reverse side of this form if necessary.) \_\_\_\_\_

No allowable will be assigned to the well until all interests have been consolidated (by communitization, unitization, forced-pooling, or otherwise) or until a non-standard unit, eliminating such interests, has been approved by the Commission.



**CERTIFICATION**

I hereby certify that the information contained herein is true and complete to the best of my knowledge and belief.

Name: *John W. West*  
 Position: **Production Controller**  
 Company: **Stevens Operating Corp.**

Date: **12-21-84**

I hereby certify that the well location shown on this plat was plotted from field notes of actual surveys made by me or under my supervision, and that the same is true and correct to the best of my knowledge and belief.

Date Surveyed: **12/7/84**

Registered Professional Engineer and/or Land Surveyor

Certificate No. **JOHN W. WEST, 676**  
**RONALD J. EIDSON, 3239**

0 330 660 990 1320 1650 1980 2310 2640 2970 3300 3630 3960 4290 4620 4950 5280 5610 5940 6270 6600