

NM OIL CONS. COMMISSION

Drawer DD

Artesia, NM 88210

UNITED STATES

DEPARTMENT OF THE INTERIOR

GEOLOGICAL SURVEY

RECEIVED BY
(Other instructions on reverse side)

Form approved.
Budget Bureau No. 42-R1425.

30-005-62246

APPLICATION FOR PERMIT TO DRILL, DEEPEN, OR PLUG BACK

1. TYPE OF WORK

DRILL ☒

DEEPEN ☐

PLUG BACK ☐

2. TYPE OF WELL

OIL WELL ☒

GAS WELL ☐

OTHER ☐

SINGLE ZONE ☐

MULTIPLE ZONE ☒

3. NAME OF OPERATOR

Harper Oil Company

4. ADDRESS OF OPERATOR

310 Briercroft Bldg., Midland, Texas 79702

5. LOCATION OF WELL (Report location clearly and in accordance with any State requirements.)

At surface
1650' FWL & 1980' FSL
At proposed prod. zone

14. DISTANCE IN MILES AND DIRECTION FROM NEAREST TOWN OR POST OFFICE*

45 air miles southwest of Roswell, New Mexico

15. DISTANCE FROM PROPOSED*

LOCATION TO NEAREST PROPERTY OR LEASE LINE, FT.
(Also to nearest drg. unit line, if any)

16. NO. OF ACRES IN LEASE

640

17. NO. OF ACRES ASSIGNED TO THIS WELL

320

40

18. DISTANCE FROM PROPOSED LOCATION* TO NEAREST WELL, DRILLING COMPLETED, OR APPLIED FOR, ON THIS LEASE, FT.

19. PROPOSED DEPTH

5500'

20. ROTARY OR CABLE TOOLS

Rotary

21. ELEVATIONS (Show whether LP, RT, GR, etc.)

4357.5

22. APPROX. DATE WORK WILL START*

January 20, 1985

PROPOSED CASING AND CEMENTING PROGRAM

SIZE OF HOLE	SIZE OF CASING	WEIGHT PER FOOT	SETTING DEPTH	QUANTITY OF CEMENT
12-1/4"	5-5/8"	24#	1050'	525 sx (Circulate)
7-7/8"	5-1/2"	15.50	6200' 6400'	650 sx



Posted ID!
API & NL
2-1-85

IN ABOVE SPACE DESCRIBE PROPOSED PROGRAM: If proposal is to deepen or plug back, give data on present productive zone and proposed new productive zone. If proposal is to drill or deepen directionally, give pertinent data on subsurface locations and measured and true vertical depths. Give blowout prevention program, if any.

SIGNED L. H. Breda TITLE Operations Manager DATE January 9, 1985

(This space for Federal or State office use)

PERMIT NO. _____ APPROVAL DATE _____

APPROVED BY S/Phil Kirk TITLE Area Manager DATE 1-17-85

CONDITIONS OF APPROVAL, IF ANY:

NEW MEXICO OIL CONSERVATION COMMISSION
WELL LOCATION AND ACREAGE DEDICATION PLAT

Form C-102
Supersedes C-128
Effective 1-1-65

All distances must be from the outer boundaries of the Section.

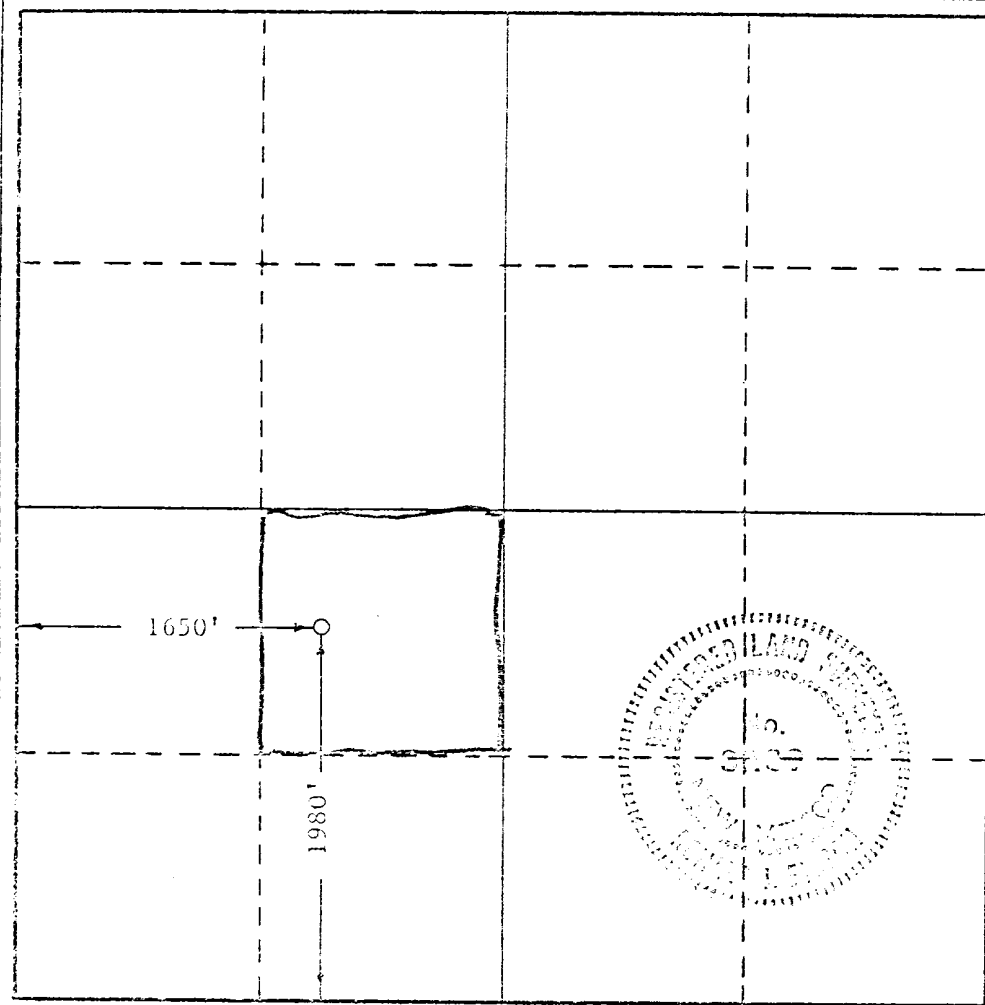
Operator Harper Oil Company			Lease Federal-21- <i>1650</i>		Well No. 1
Unit Letter K	Section 21	Township 14 South	Range 21 East	County Chaves	
Actual Footage Location of Well: 1980 feet from the South line and 1650 feet from the West line					
Ground Level Elev. 4357.5	Producing Formation		Pool <i>Wildcat</i>	Dedicated Acreage: 40 Acres	

1. Outline the acreage dedicated to the subject well by colored pencil or hatchure marks on the plat below.
2. If more than one lease is dedicated to the well, outline each and identify the ownership thereof (both as to working interest and royalty).
3. If more than one lease of different ownership is dedicated to the well, have the interests of all owners been consolidated by communitization, unitization, force-pooling, etc?

☐ Yes ☐ No If answer is "yes," type of consolidation _____

If answer is "no," list the owners and tract descriptions which have actually been consolidated. (Use reverse side of this form if necessary.) _____

No allowable will be assigned to the well until all interests have been consolidated (by communitization, unitization, forced-pooling, or otherwise) or until a non-standard unit, eliminating such interests, has been approved by the Commission.



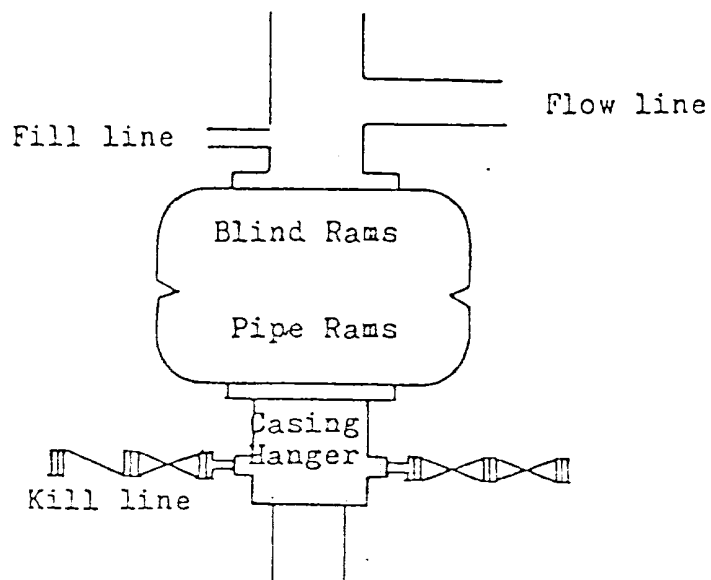
CERTIFICATION

I hereby certify that the information contained herein is true and complete to the best of my knowledge and belief.

Name
L. B. Beiden
Position
Operations Manager
Company
Harper Oil Company
Date
January 9, 1985

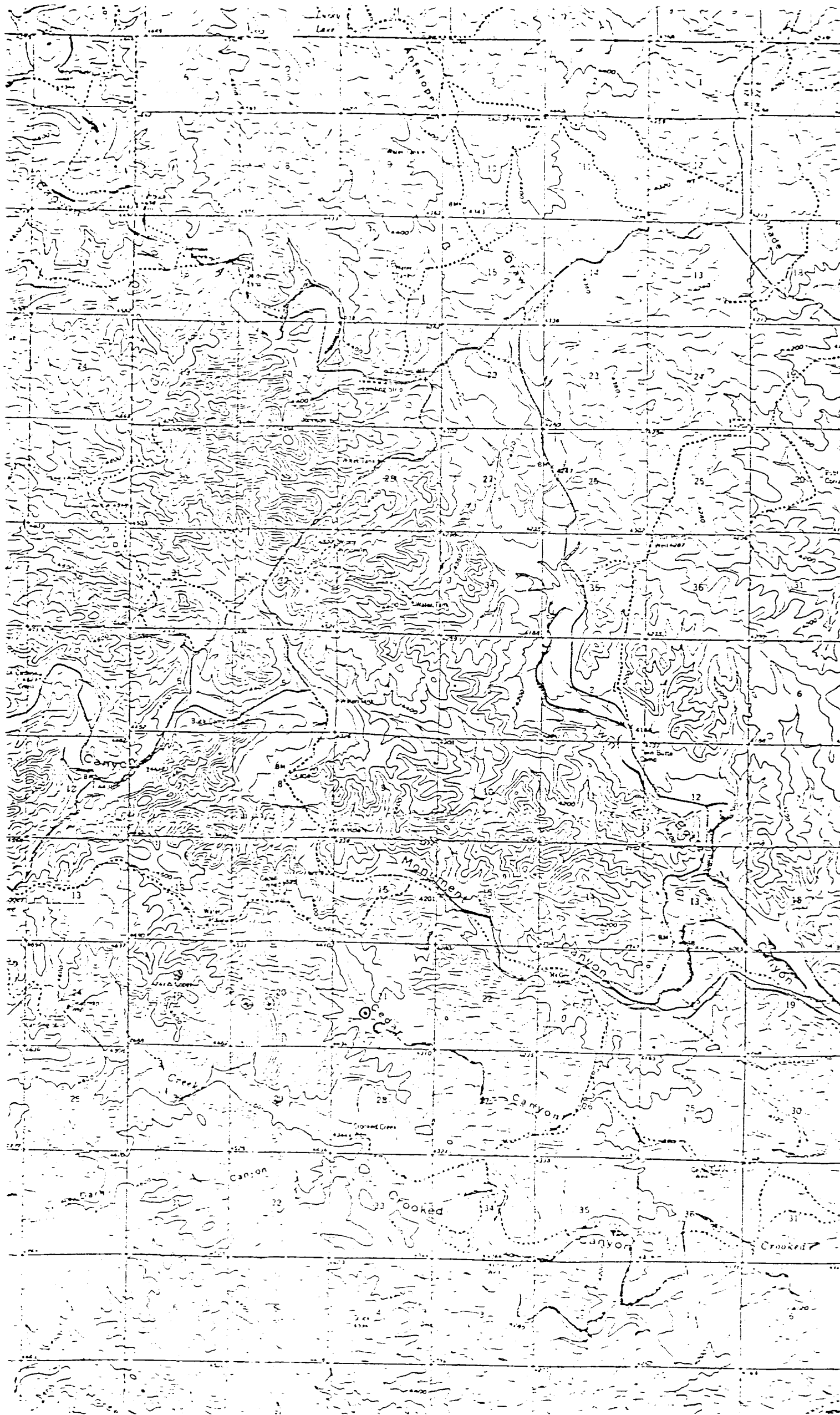
I hereby certify that the well location shown on this plat was plotted from field notes of actual surveys made by me or under my supervision, and that the same is true and correct to the best of my knowledge and belief.

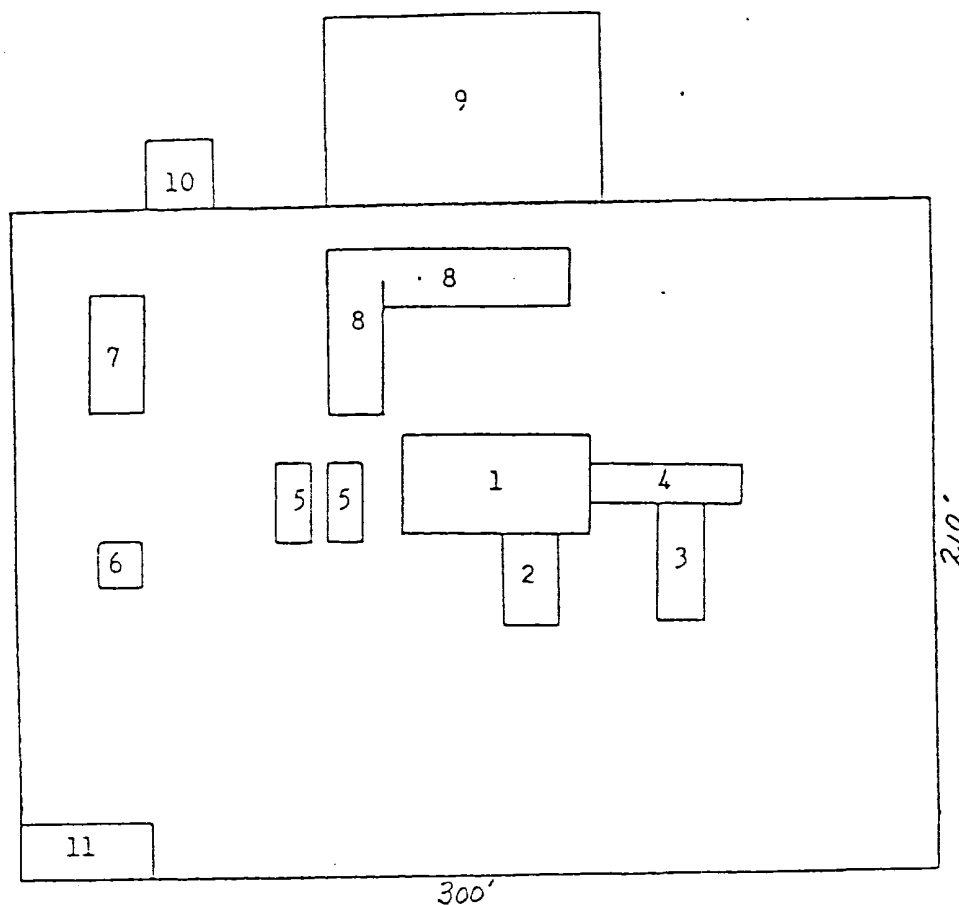
Date Surveyed
January 8, 1985
Registered Professional Engineer
and Oil Land Surveyor
Ronald J. Eidson
Certificate No. *1000 W WEST*



Blowout Preventer
3000 psi working pressure

EXHIBIT "D"





- | | |
|-----------------|-------------------|
| 1. Substructure | 7. Water Tank |
| 2. Doghouse | 8. Working Pits |
| 3. Piperacks | 9. Reserve Pit |
| 4. Catwalk | 10. Trash Pit |
| 5. Mud Pumps | 11. Trailer House |
| 6. Light Plant | |

EXHIBIT "C"