

NEW OLD COUNTY  
Drawer DD  
Artesia, NM 88210

SUBMIT IN TRIPLICATE\*  
(Other instructions on reverse side)

Form approved.  
Budget Bureau No. 42-R1425.

30-005-62248

RECEIVED BY  
Form 9-331 C  
(May 1963)  
JAN 29 1985  
O. C. D.

UNITED STATES  
DEPARTMENT OF THE INTERIOR  
GEOLOGICAL SURVEY

ARTESIA OFFICE  
APPLICATION FOR PERMIT TO DRILL, DEEPEN, OR PLUG BACK

5. LEASE DESIGNATION AND SERIAL NO. NM-23516

6. IF INDIAN, ALLOTTEE OR TRIBE NAME

7. UNIT AGREEMENT NAME

8. FARM OR LEASE NAME

9. WELL NO. 1

10. FIELD AND POOL, OR WILDCAT

11. SEC., T., R., M., OR BLK. AND SURVEY OR AREA

12. COUNTY OR PARISH

13. STATE

14. DISTANCE IN MILES AND DIRECTION FROM NEAREST TOWN OR POST OFFICE\*  
18 miles NNW of Roswell, New Mexico

15. DISTANCE FROM PROPOSED\* LOCATION TO NEAREST PROPERTY OR LEASE LINE, FT. (Also to nearest drlg. unit line, if any)  
1593'

16. NO. OF ACRES IN LEASE  
640

17. NO. OF ACRES ASSIGNED TO THIS WELL  
160

18. DISTANCE FROM PROPOSED LOCATION\* TO NEAREST WELL, DRILLING, COMPLETED, OR APPLIED FOR, ON THIS LEASE, FT.

19. PROPOSED DEPTH  
3550'

20. ROTARY OR CABLE TOOLS  
Rotary

21. ELEVATIONS (Show whether DF, RT, GR, etc.)  
3982' GL

22. APPROX. DATE WORK WILL START\*  
ASAP

23. PROPOSED CASING AND CEMENTING PROGRAM

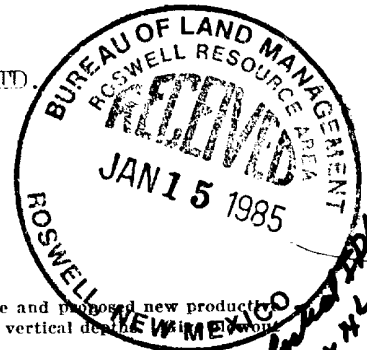
SIZE OF HOLE	SIZE OF CASING	WEIGHT PER FOOT	SETTING DEPTH	QUANTITY OF CEMENT
14 3/4"	10 3/4"	40.5#-J-55	appr. 950'	800 sx circ.
7 7/8"	4 1/2"	9.5#-J-55	TD	350 sx

We propose to drill and test the Abo and intermediate formations. Approximately 950' of surface casing will be set and cement circulated to shut off gravel and caving. If needed (lost circulation) 8 5/8" intermediate casing will be run to 1500' and cemented with enough cement calculated to tie back into the surface casing. If commercial, production casing will be run and cemented with adequate cover, perforated and stimulated as needed for production.

MUD PROGRAM: FW gel/LCM to 950', Brine to 3200', Brine/KCL water to TD.

BOP PROGRAM: BOP's will be installed at the offset and tested daily.

GAS NOT DEDICATED



IN ABOVE SPACE DESCRIBE PROPOSED PROGRAM: If proposal is to deepen or plug back, give data on present productive zone and proposed new production zone. If proposal is to drill or deepen directionally, give pertinent data on subsurface locations and measured and true vertical depth. If proposal is for a water preventer program, if any.

24. SIGNED Glenn Robinson TITLE Regulatory Agent DATE 1/14/85  
(This space for Federal or State office use)

PERMIT NO. \_\_\_\_\_ APPROVAL DATE \_\_\_\_\_

APPROVED BY S/Levi Deike, Acting TITLE Area Manager DATE 1-25-85  
CONDITIONS OF APPROVAL, IF ANY:

c/sr  
2-1-85

NEW MEXICO OIL CONSERVATION COMMISSION  
WELL LOCATION AND ACREAGE DEDICATION PLAT

Form C-102  
Supersedes C-128  
Effective 1-1-85

All distances must be from the outer boundaries of the Section.

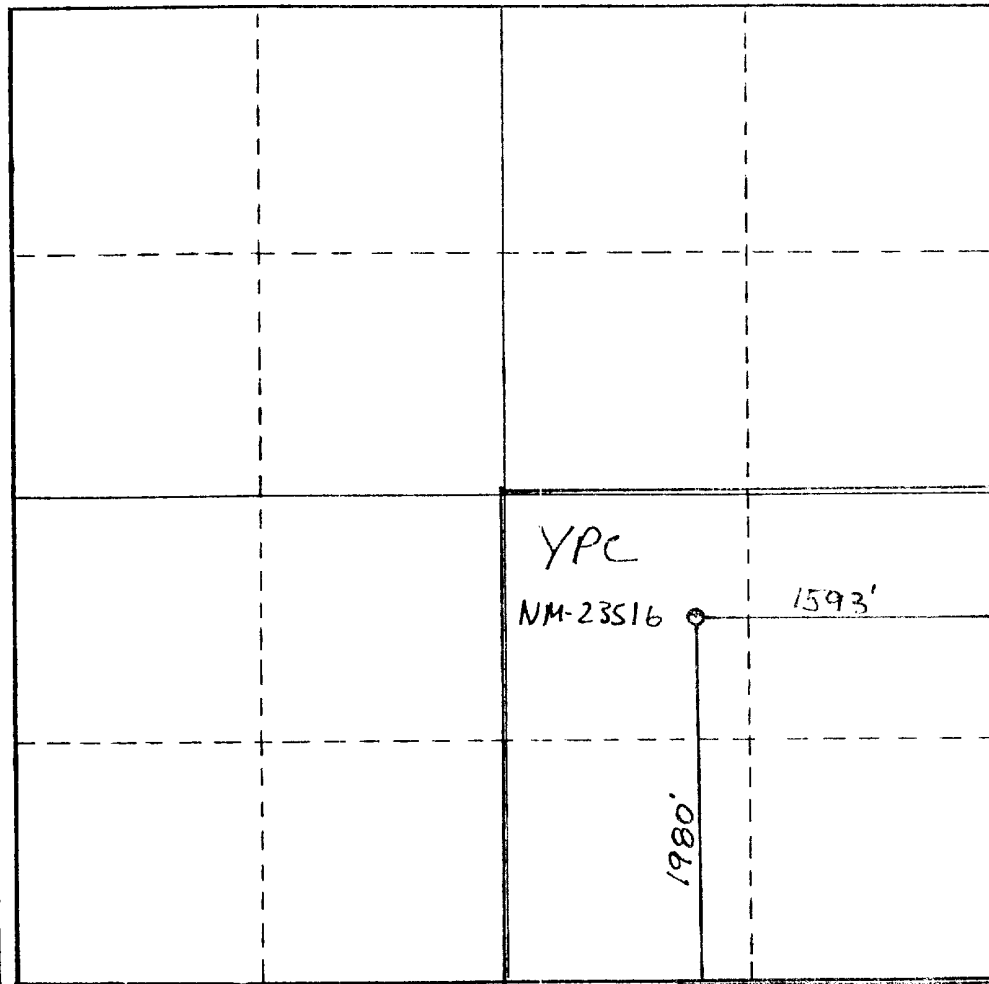
Operator Yates Petroleum Corporation			Lease Lewis "ABN" Federal		Well No. 1
Unit Letter J	Section 21	Township 8S	Range 23E	County Chaves, NM	
Actual Footage Location of Well: 1980' feet from the South line and 1593' feet from the East line					
Ground Level Elev. 3982' GL	Producing Formation Abo		Pool Pecos Slope Abo	Dedicated Acreage: 160 Acres	

1. Outline the acreage dedicated to the subject well by colored pencil or hachure marks on the plat below.
2. If more than one lease is dedicated to the well, outline each and identify the ownership thereof (both as to working interest and royalty).
3. If more than one lease of different ownership is dedicated to the well, have the interests of all owners been consolidated by communitization, unitization, force-pooling, etc?

Yes  No If answer is "yes," type of consolidation \_\_\_\_\_

If answer is "no," list the owners and tract descriptions which have actually been consolidated. (Use reverse side of this form if necessary.) \_\_\_\_\_

No allowable will be assigned to the well until all interests have been consolidated (by communitization, unitization, forced-pooling, or otherwise) or until a non-standard unit, eliminating such interests, has been approved by the Commission.



CERTIFICATION

I hereby certify that the information contained herein is true and complete to the best of my knowledge and belief.

Name  
Gliserio Rodriguez

Position  
Regulatory Agent

Company  
Yates Petroleum Corp.

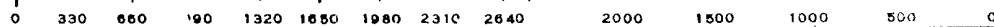
Date  
January 14, 1985

I hereby certify that the well location shown on this plat was plotted from field notes of actual surveys made by me or under my supervision, and that the same is true and correct to the best of my knowledge and belief.

Date Surveyed  
January 11, 1985

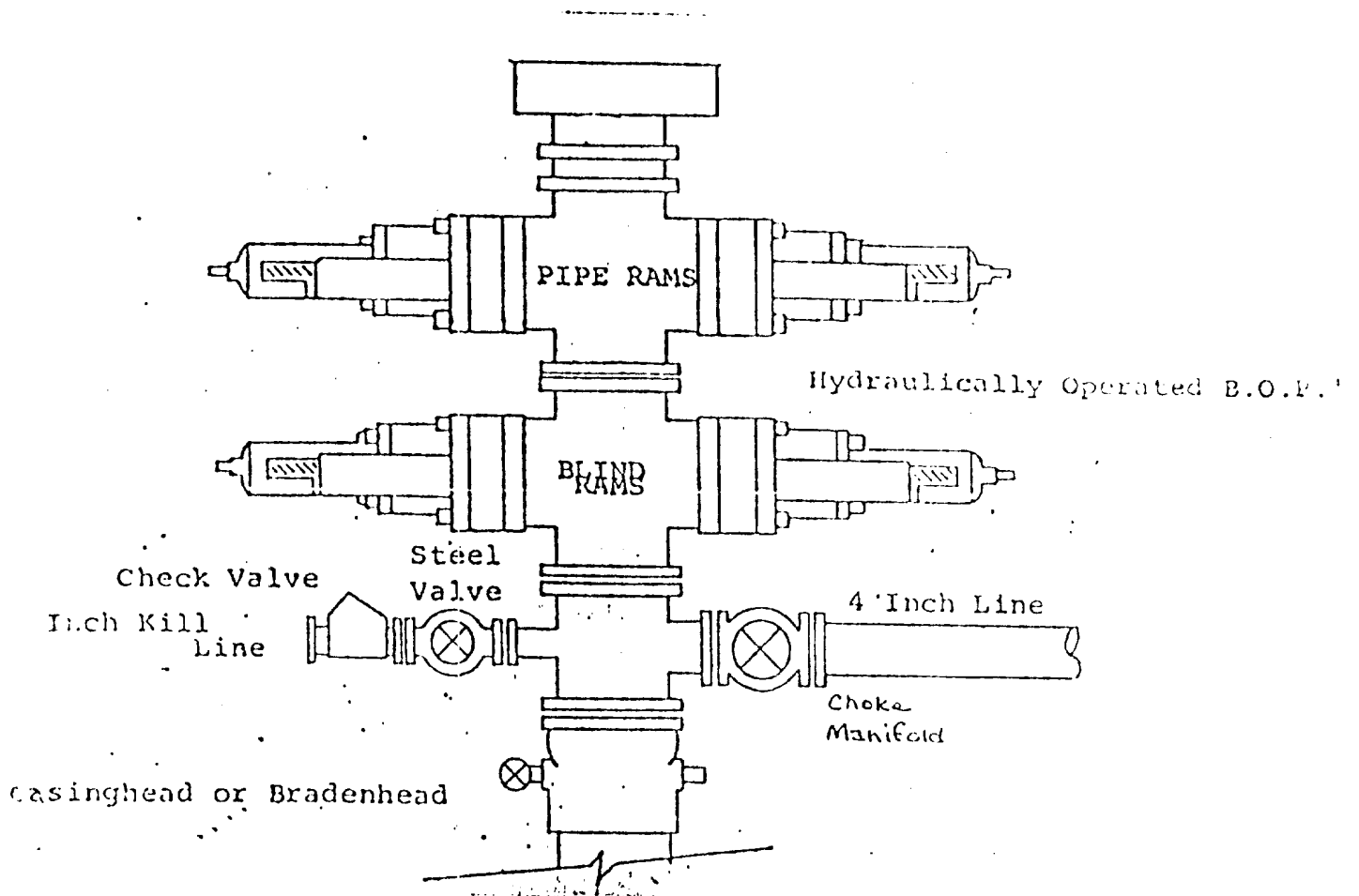
Registered Professional Engineer and/or Land Surveyor  
3640

Certificate No. 3640



# EXHIBIT B

## BOP DIAGRAM



YATES PETROLEUM CORPORATION  
Lewis "ABN" Federal #1  
1980' FSL and 1593' FEL  
Section 21-T8S-R23E  
Chaves County, NM

In conjunction with Form 9-331C, Application for Permit to Drill subject well, Yates Petroleum Company submits the following ten items of pertinent information in accordance with requirements.

1. The geologic surface formation is sandy alluvium.
2. The estimated tops of geologic markers are as follows:

San Andres	100'
Fullerton	2269'
Abo	2937'
TD	3550'

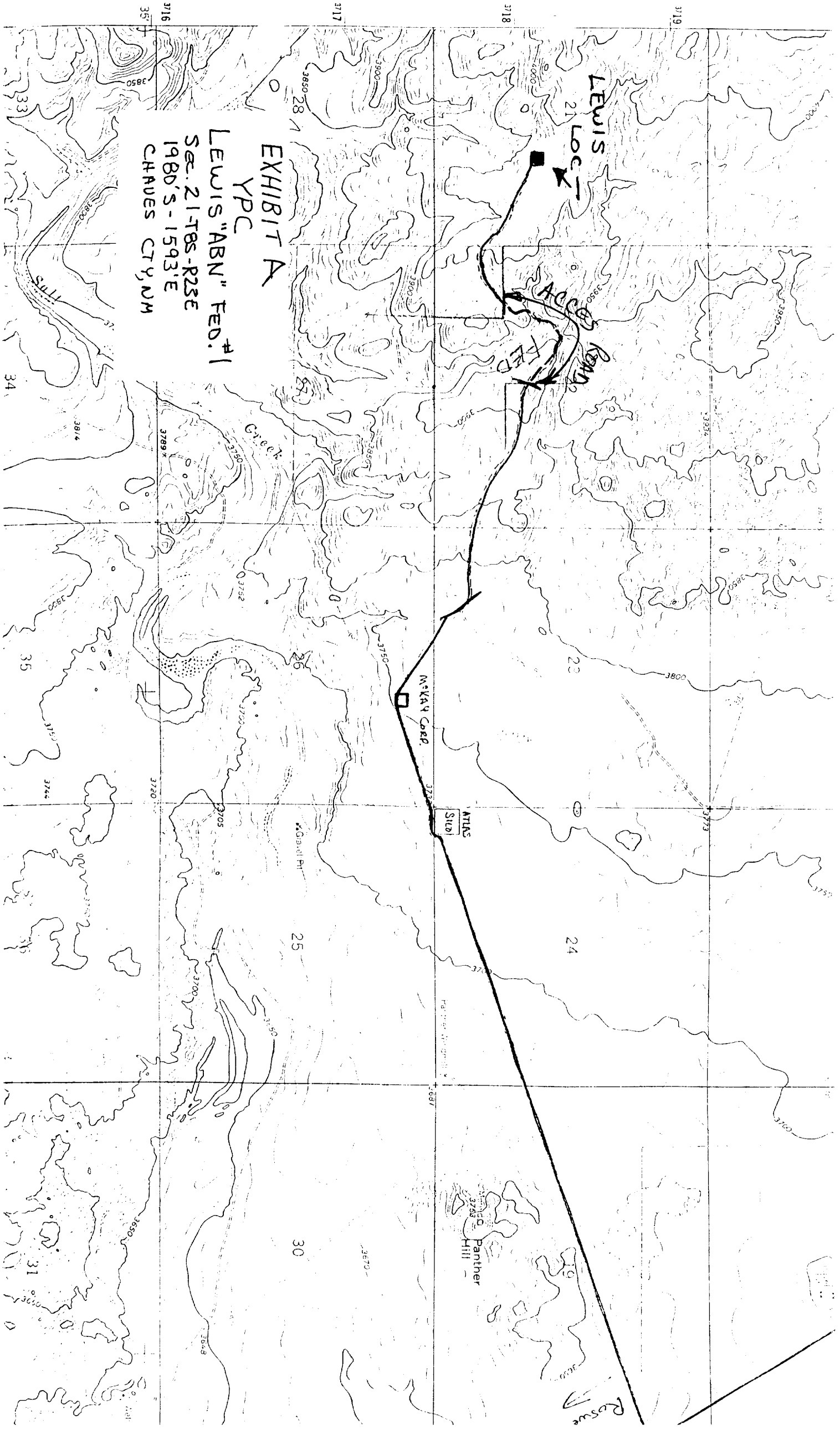
3. The estimated depths at which anticipated water, oil or gas formations are expected to be encountered:

Water: 750-1000'

Oil or Gas: Abo 2985'

4. Proposed Casing Program: See Form 9-331C.
5. Pressure Control Equipment: See Form 9-331C.
6. Mud Program: See Form 9-331C.
7. Auxiliary Equipment: Kelly Cock; pit level indicators and flow sensor equipment; sub with full-opening valve on floor, drill pipe connection.
8. Testing, Logging and Coring Program:  

Samples:	Surface casing to TD.
DST's:	As warranted.
Coring:	None.
Logging:	CNL-FDC TD to csg. w/GR-CNL to surface, DLL from TD to csg.
9. No abnormal pressures or temperatures are anticipated.
10. Anticipated starting date: As soon as possible after approval.



LEWIS  
LEWIS "ABN" FED. #1  
YPC  
EXHIBIT A  
Sec. 21 T8S-R23E  
1980'S-1593'E  
CHAUVES CT, Y, NM

LEWIS  
21 LOCK

AC  
RMA

McKAY CORP.

ATLAS  
Sub

Panther  
Hill

Rescue

