

30-005-62257

c/sf

UNITED STATES
DEPARTMENT OF THE INTERIOR

GEOLOGICAL SURVEY

APPLICATION FOR PERMIT TO DRILL, DEEPEN, OR PLUG BACK

1. TYPE OF WORK

DRILL ☒

RECEIVED BY

PLUG BACK ☐

2. TYPE OF WELL

OIL ☐GAS ☒OTHER ☐

3. NAME OF OPERATOR

Yates Petroleum Corporation

4. ADDRESS OF OPERATOR

207 S. 4th Street, Artesia, New Mexico 88210

5. LOCATION OF WELL (Report location clearly and in accordance with any State requirements.)*

At surface

660' FSL & 1980' FEL (Unit O)

At proposed production zone

14. DISTANCE IN MILES AND DIRECTION FROM NEAREST TOWN OR POST OFFICE*

Approximately 19 miles east of Roswell, New Mexico

15. DISTANCE FROM PROPOSED*

LOCATION TO NEAREST

PROPERTY OR LEASE LINE, FT.

(Also to nearest CLR unit line, if any)

660

16. DISTANCE FROM PROPOSED LOCATION*

TO NEAREST WELL DRILLING, COMPLETED,
OR APPLIED FOR, ON THIS LEASE, FT.

1 1/2 mile

18. NO. OF ACRES IN LEASE

240

19. PROPOSED DEPTH

4900'

17. NO. OF ACRES ASSIGNED
TO THIS WELL

160

20. ROTARY OR CABLE TOOLS

Rotary

22. APPROX. DATE WORK WILL START*

ASAP

23.

PROPOSED CASING AND CEMENTING PROGRAM

SIZE OF HOLE	SIZE OF CASING	WEIGHT PER FOOT	SETTING DEPTH	QUANTITY OF CEMENT
14-3/4"	10-3/4"	40.5# K-55	980'	750 sacks - circulate
7-7/8"	4-1/2"	9.5# K-55	TD	350 sacks

We propose to drill and test the Abo and intermediate formations. Approximately 980' of surface casing will be set and cement circulated to shut off gravel and caving. If needed (lost circulation) 8-5/8" intermediate casing will be run to 1500' and cemented with enough cement calculated to tie back into the surface casing. Temperature survey will be run to determine cement top. If commercial, production casing will be run and cemented with adequate cover, perforate, and stimulate as needed for production.

MUD PROGRAM: FW gel & LCM to 980'; brine to 3200'; brine & KCL water to TD

BOP PROGRAM: BOP's will be installed at the offset and tested daily.

GAS NOT DEDICATED.

ON ABOVE SPACE DESCRIBE PROPOSED PROGRAM: If proposal is to deepen or plug back, give data on present productive zone and proposed new productive zone. If proposal is to drill or deepen directionally, give pertinent data on subsurface locations and measured and true vertical depths. Give blowout preventer program, if any.

24

SIGNED

*Cy Cowan*TITLE Regulatory AgentDATE March 12, 1985

(This space for Federal or State office use)

PERMIT NO. _____

APPROVAL DATE _____

APPROVED BY _____

TITLE _____

DATE 3-27-85

CONDITIONS OF APPROVAL, IF ANY:

*Posted ID
APR 11 1985
4-5-85*

NEW MEXICO OIL CONSERVATION COMMISSION
WELL LOCATION AND ACREAGE DEDICATION PLAT

Form C-102
Supersedes C-128
Effective 1-1-65

All distances must be from the outer boundaries of the Section.

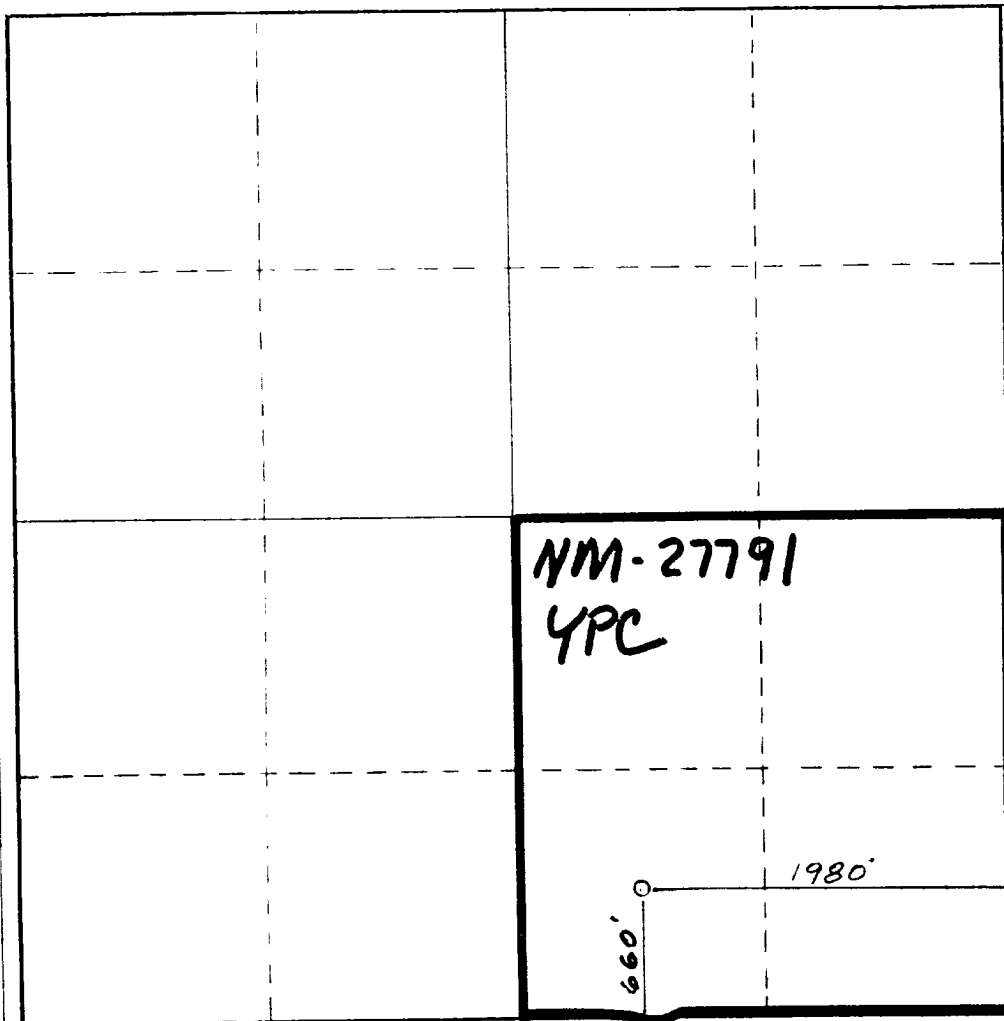
Operator YATES PETROLEUM CORPORATION		Lease Zane ABS Federal		Well No. 1
Unit Letter 0	Section 15	Township 9 South	Range 26 East	County Chaves
Actual Footage Location of Well: 660 feet from the South line and 1980 feet from the East line				
Ground Level Elev. 3775.	Producing Formation ABO	Pool PECOS Slope ABO	Dedicated Acreage: 160 Acres	

- Outline the acreage dedicated to the subject well by colored pencil or hachure marks on the plat below.
- If more than one lease is dedicated to the well, outline each and identify the ownership thereof (both as to working interest and royalty).
- If more than one lease of different ownership is dedicated to the well, have the interests of all owners been consolidated by communitization, unitization, force-pooling, etc?

☐ Yes ☐ No If answer is "yes," type of consolidation _____

If answer is "no," list the owners and tract descriptions which have actually been consolidated. (Use reverse side of this form if necessary.) _____

No allowable will be assigned to the well until all interests have been consolidated (by communitization, unitization, forced-pooling, or otherwise) or until a non-standard unit, eliminating such interests, has been approved by the Commission.



CERTIFICATION

I hereby certify that the information contained herein is true and complete to the best of my knowledge and belief.

Cy Cowan

Name

Regulatory Agent

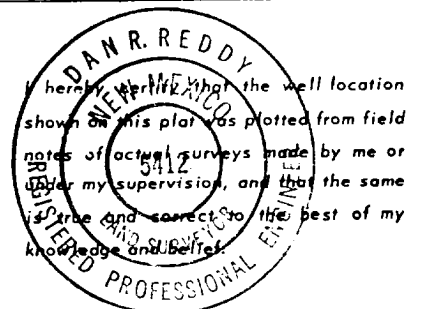
Position

Yates Petroleum Corporation

Company

March 12, 1985

Date



Date Surveyed

February 18, 1985

Registered Professional Engineer
and/or Land Surveyor

Dan R. Reddy

Certificate No.

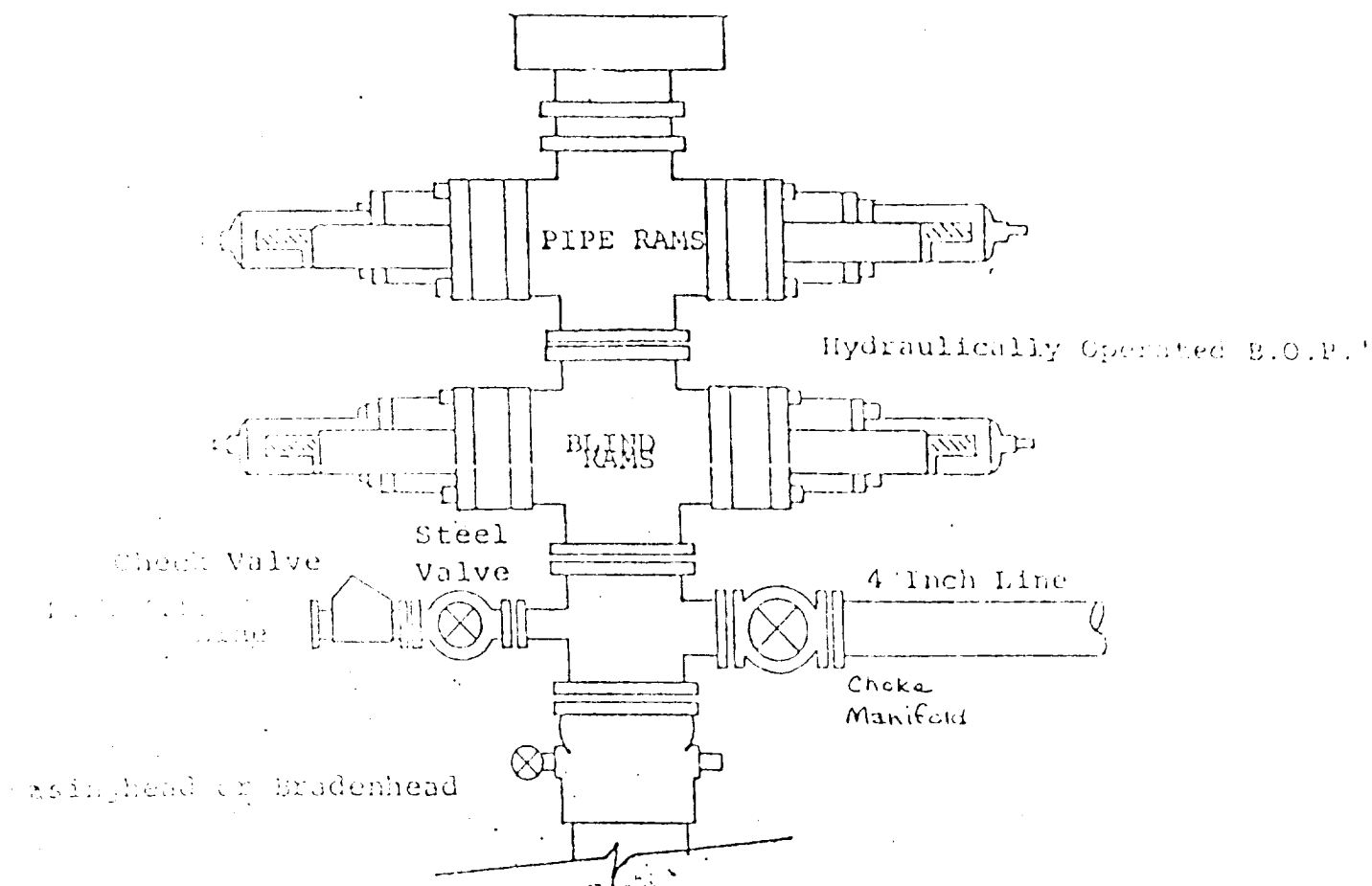
NM PE&LS NO. 5412

0 330 660 990 1320 1650 1980 2310 2640 2000 1500 1000 500 0

EXHIBIT B

BOP DIAGRAM

RATED 3000[#]



YATES PETROLEUM CORPORATION
ZANE "ABS" FEDERAL #1
660' FSL & 1980' FEL
Sec. 15-T9S-R26E

In conjunction with Form 9-331C, Application for Permit to Drill subject well, Yates Petroleum Corporation submits the following ten items of pertinent information in accordance with USGS requirements.

1. The geologic surface formation is sandy alluvium.

2. The estimated tops of geologic markers are as follows:

San Andres	990
Glorieta	2136
Fullerton	3602
Abo	4354
TD	4900

3. The estimated depths at which anticipated water, oil or gas formations are expected to be encountered:

Water: 150-280'

Oil or Gas: 4400'

4. Proposed Casing Program: See Form 9-331C.

5. Pressure Control Equipment: See Form 9-331C and Exhibit B.

6. Mud Program: See Form 9-331C.

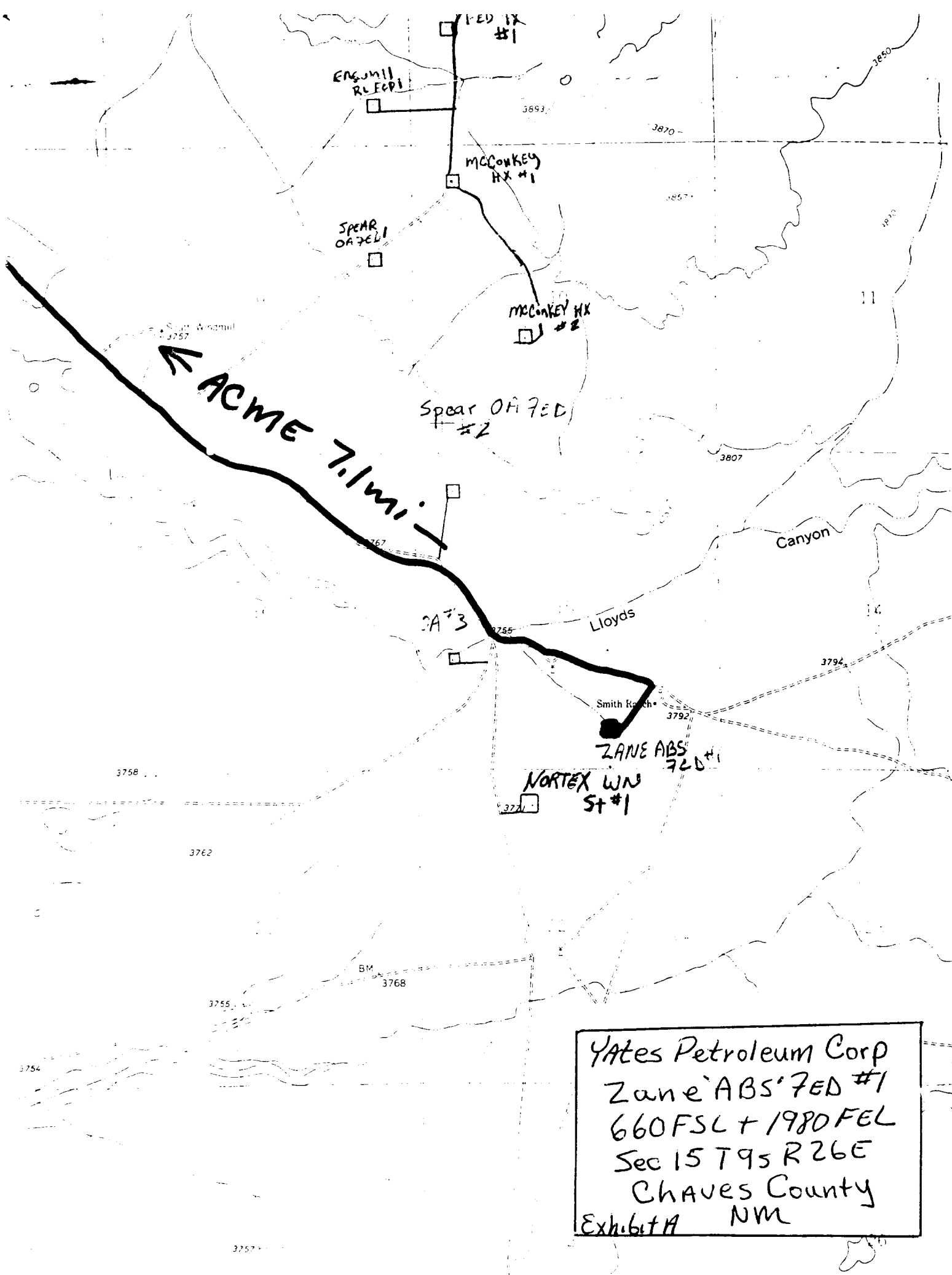
7. Auxiliary Equipment: Kelly Cock; pit level indicators and flow sensor equipment;
sub with full-opening valve on floor, drill pipe connection.

8. Testing, Logging and Coring Program:

Samples: Surface casing to TD
DST's: As warranted
Coring: None
Logging: CNL/FDC TD to casing w/GR-CNL to surface; DLL TD to casing
with Rxo

9. No abnormal pressures or temperatures are anticipated.

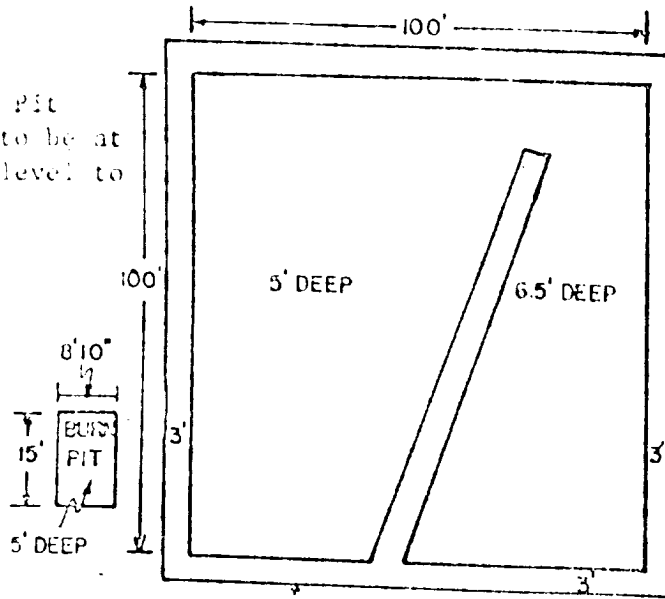
10. Anticipated starting date: As soon as possible after approval.



YATES PETROLEUM CORP.

Exhibit C

Reserve Pit
bottom to be at
ground level to
1 ft.



NOTE:

Inside walls must be as
high and wide as outer
walls of pit.

