

UNITED STATES
DEPARTMENT OF THE INTERIOR
GEOLOGICAL SURVEY

30-105-62265

APPLICATION FOR PERMIT TO DRILL, DEEPEN OR PLUG BACK

1a. TYPE OF WORK
DRILL ☒ DEEPEN ☐ PLUG BACK ☐

b. TYPE OF WELL
OIL WELL ☐ GAS WELL ☒ OTHER ☐ SINGLE ZONE ☐ MULTIPLE ZONE ☐

2. NAME OF OPERATOR
Yates Petroleum Corporation

3. ADDRESS OF OPERATOR
207 South Fourth Street - Artesia, NM 88210

4. LOCATION OF WELL (Report location clearly and in accordance with any State requirements.)*
At surface 660' FNL & 1780' FWL

At proposed prod. zone Same

14. DISTANCE IN MILES AND DIRECTION FROM NEAREST TOWN OR POST OFFICE*
32 miles northeast of Roswell, New Mexico

15. DISTANCE FROM PROPOSED* LOCATION TO NEAREST PROPERTY OR LEASE LINE, FT. (Also to nearest drlg. unit line, if any)
660'

18. DISTANCE FROM PROPOSED LOCATION* TO NEAREST WELL, DRILLING, COMPLETED, OR APPLIED FOR, ON THIS LEASE, FT.
4300'

21. ELEVATIONS (Show whether DF, RT, GR, etc.)
3654.8' GR

23. PROPOSED CASING AND CEMENTING PROGRAM

SIZE OF HOLE	SIZE OF CASING	WEIGHT PER FOOT	SETTING DEPTH	QUANTITY OF CEMENT
12-1/4"	8-5/8"	24# J-55	950'	650 sacks - circulate
7-7/8"	4-1/2"	9.5#	TD	350 sacks

5. LEASE DESIGNATION AND SERIAL NO.
NM-25473

6. IF INDIAN, ALLOTTEE OR TRIBE NAME

7. UNIT AGREEMENT NAME

8. FARM OR LEASE NAME
Savage "NI" Federal Com

9. WELL NO.
4

10. FIELD AND POOL, OR WILDCAT
Pecos Slope Abo

11. SEC., T., R., M., OR BLK. AND SURVEY OR AREA
Sec. 29-T6S-R26E

12. COUNTY OR PARISH
Chaves

13. STATE
NM

We propose to drill and test the Abo and intermediate formations. Approximately 950' of surface casing will be set and cement circulated to shut off gravel and cavings. If commercial, production casing will be run and cemented with adequate cover, perforated and stimulated as needed for production.

MUD PROGRAM: FW gel and LCM to 950'; brine to 3200'; brine and KCL water to TD

BOP PROGRAM: BOP's will be installed at the offset and tested daily.

GAS NOT DEDICATED

IN ABOVE SPACE DESCRIBE PROPOSED PROGRAM: If proposal is to deepen or plug back, give data on present productive zone and proposed new productive zone. If proposal is to drill or deepen directionally, give pertinent data on subsurface locations and measured and true vertical depths. Give blowout preventer program, if any.

24. SIGNED Clifton May TITLE Regulatory Agent DATE April 8, 1985
(This space for Federal or State office use)

PERMIT NO. _____ APPROVAL DATE _____
APPROVED BY S/Phil Kirk TITLE Area Manager DATE 4-26-85
CONDITIONS OF APPROVAL, IF ANY:

Produced In
API & NL
5-3-85

**NEW MEXICO OIL CONSERVATION COMMISSION
WELL LOCATION AND ACREAGE DEDICATION PLAT**

Form C-102
Supersedes C-128
Effective 1-1-65

All distances must be from the outer boundaries of the Section.

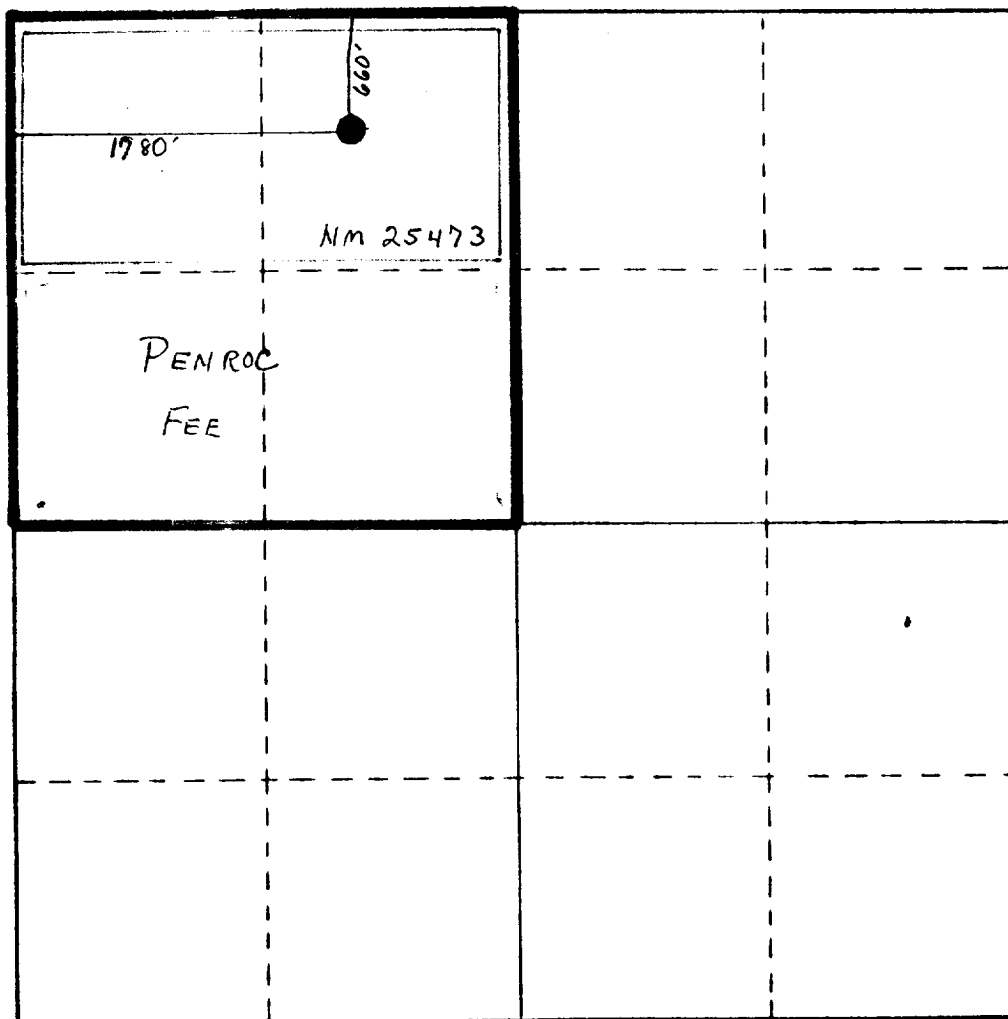
Operator Yates Petroleum Corporation			Lease Savage "NI" Federal Com		Well No. 4
Unit Letter C	Section 29	Township 6 South	Range 26 East	County Chaves	
Actual Footage Location of Well:					
660	feet from the	North	line and	1780	feet from the West line
Ground Level Elev. 3654.8' GR	Producing Formation ABO		Pool PECOS SLOPE ABO		Dedicated Acreage: 160 Acres

1. Outline the acreage dedicated to the subject well by colored pencil or hatchure marks on the plat below.
2. If more than one lease is dedicated to the well, outline each and identify the ownership thereof (both as to working interest and royalty).
3. If more than one lease of different ownership is dedicated to the well, have the interests of all owners been consolidated by communization, unitization, force-pooling, etc?

☒ Yes ☐ No If answer is "yes," type of consolidation **TO BE COMMUNITIZED**

If answer is "no," list the owners and tract descriptions which have actually been consolidated. (Use reverse side of this form if necessary.) _____

No allowable will be assigned to the well until all interests have been consolidated (by communization, unitization, forced-pooling, or otherwise) or until a non-standard unit, eliminating such interests, has been approved by the Commission.



CERTIFICATION

I hereby certify that the information contained herein is true and complete to the best of my knowledge and belief.

Clifton May
Name

Clifton May

Position

Regulatory Agent

Company

Yates Petroleum Corporation

Date

April 8, 1985

I hereby certify that the well location shown on this plat was plotted from field notes of actual surveys made by me or under my supervision, and that the same is true and correct to the best of my knowledge and belief.

Date Surveyed

Registered Professional Engineer and/or Licensed Surveyor

Certificate No.

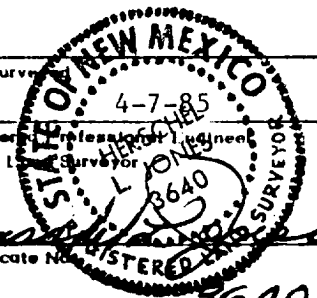
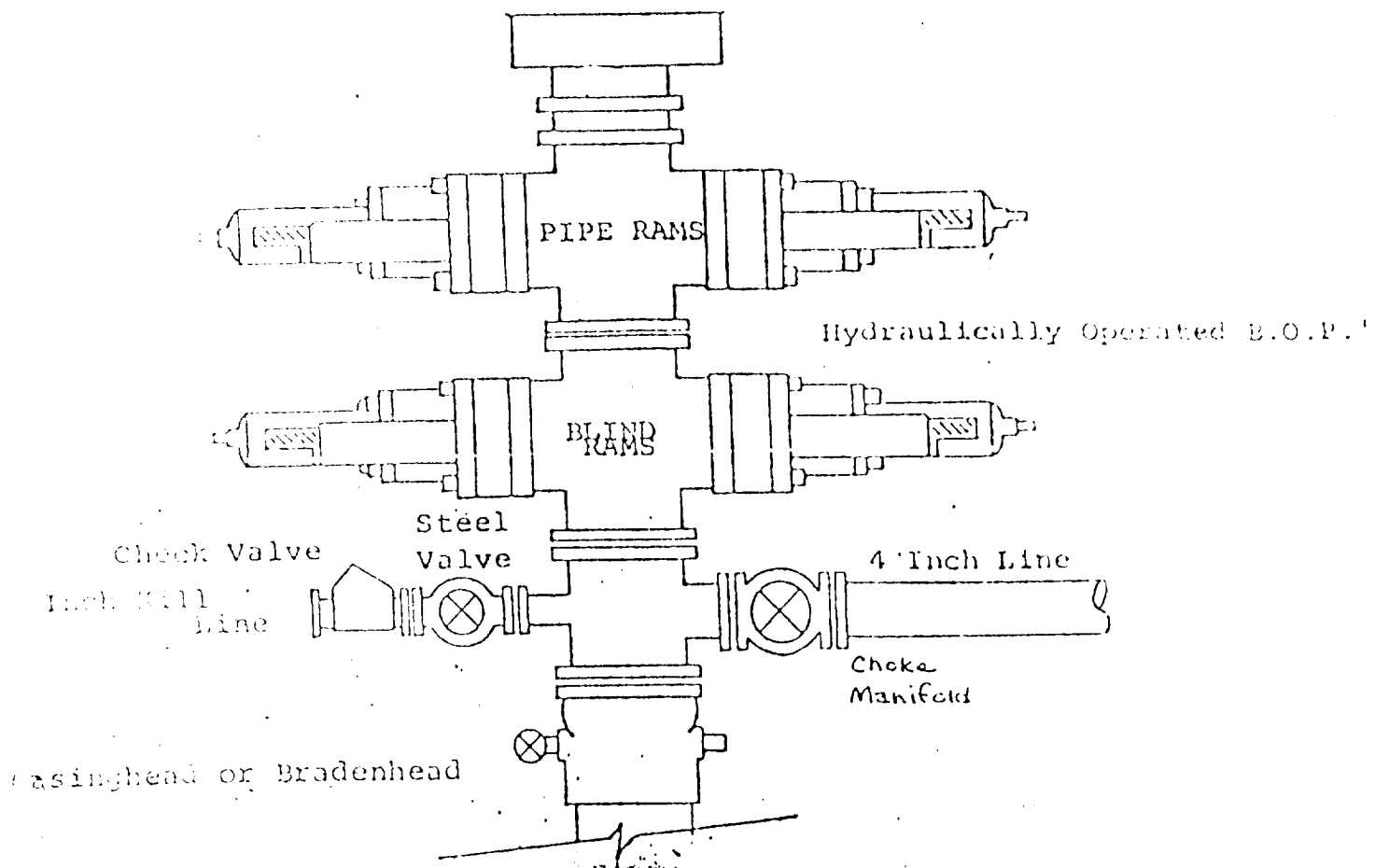


EXHIBIT B

BOP DIAGRAM

RATED 3000[#]



YATES PETROLEUM CORPORATION
Savage "N1" Federal Com #4
660' FNL & 1780' FWL
Sec. 29-T6S-R26E
Chaves County, New Mexico

In conjunction with Form 9-331C, Application for Permit to Drill subject well, Yates Petroleum Company submits the following ten items of pertinent information in accordance with BL1 requirements.

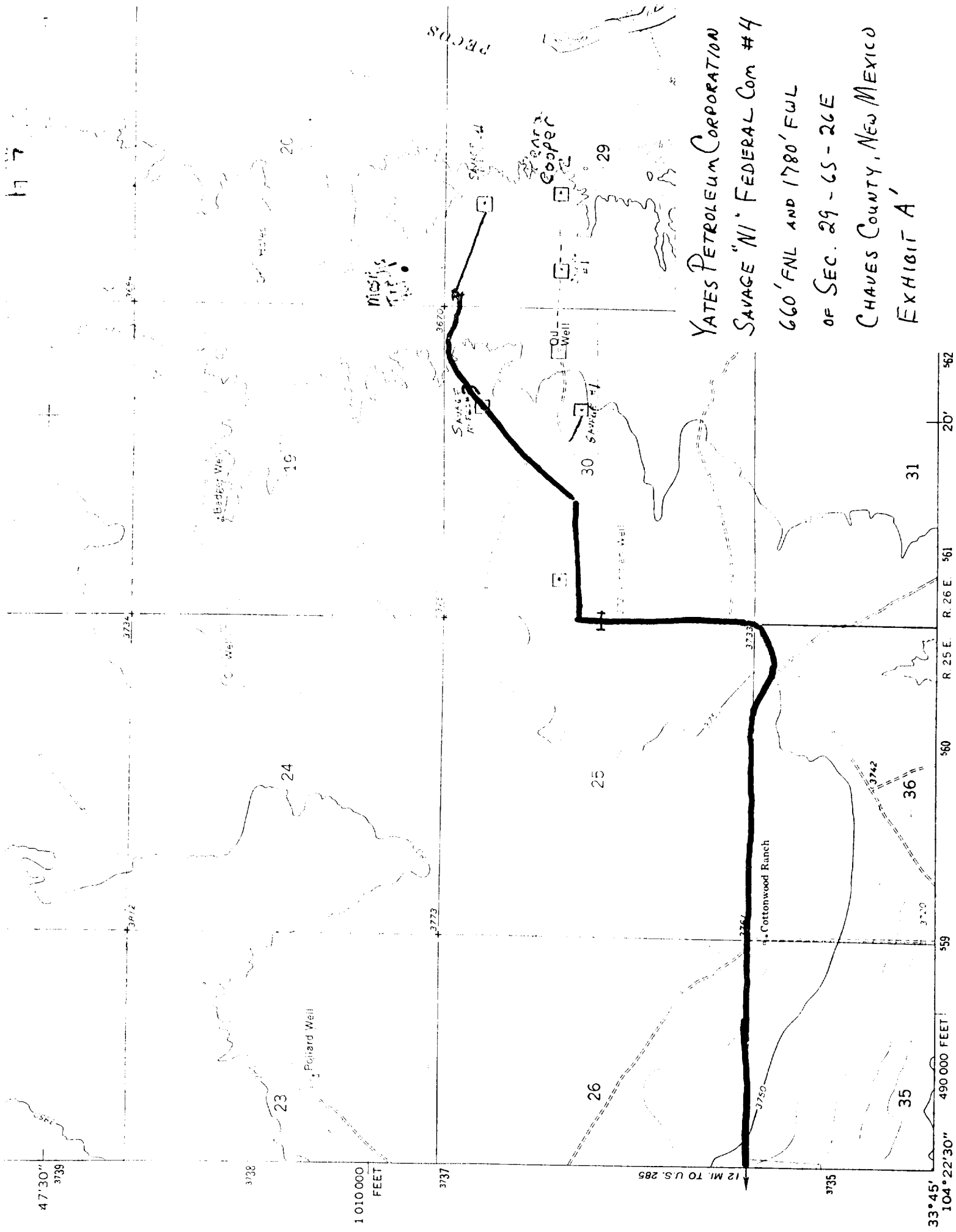
1. The geologic surface formation is quaternary alluvium.
2. The estimated tops of geologic markers are as follows:

San Andres	634'
Glorieta	1731'
Fullerton	3147'
Abo	3779'
TD	4300'
3. The estimated depths at which anticipated water, oil or gas formations are expected to be encountered:

Water: Approximately 1000'

Oil or Gas: Abo - 3800'
4. Proposed Casing Program: See Form 9-331C.
5. Pressure Control Equipment: See Form 9-331C.
6. Mud Program: See Form 9-331C.
7. Auxiliary Equipment: Kelly Cock; pit level indicators and flow sensor equipment; sub with full-opening valve on floor, drill pipe connection.
8. Testing, Logging and Coring Program:

Samples: Surface casing to TD
DST's: As warranted
Coring: None
Logging: CNL/FDC from TD to casing w/GR-CNL on to surface; DLL from TD to casing
9. No abnormal pressures or temperatures are anticipated.
10. Anticipated starting date: As soon as possible after approval.



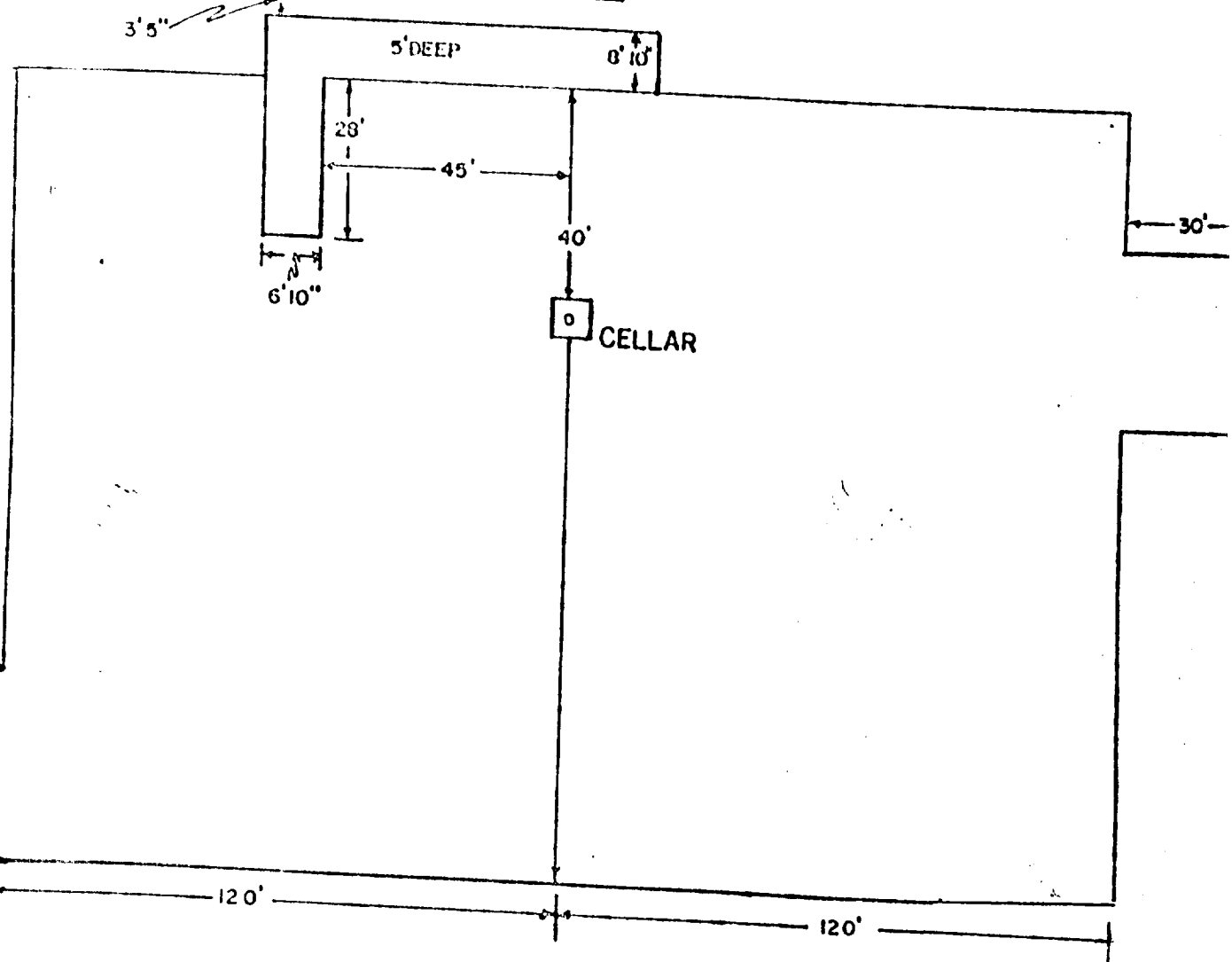
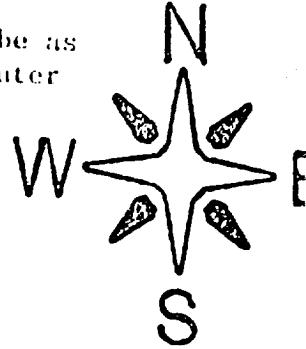
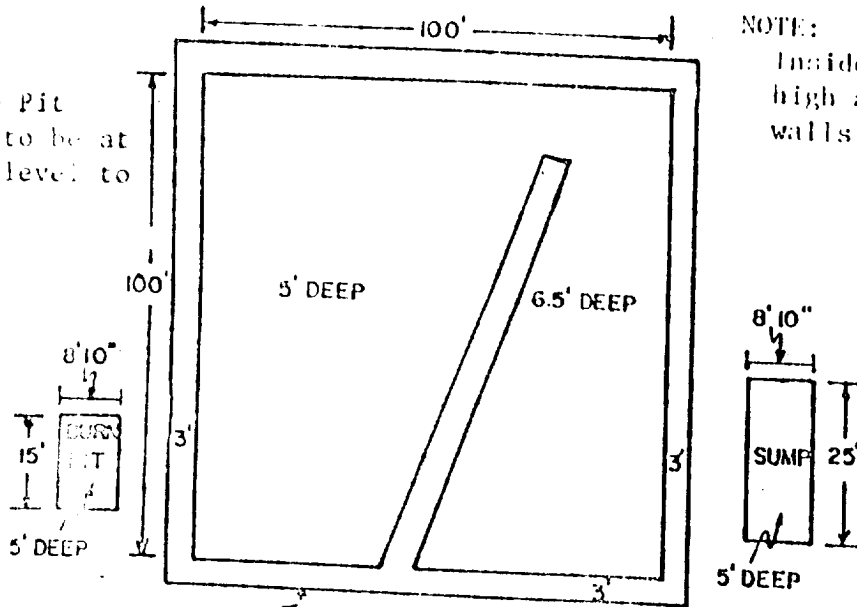
YATES PETROLEUM CORPORATION
SAVING N-1 FEDERAL COM #4
660' FNL AND 1780' FNL
OF SEC. 29 - 6S - 26E
CHAVES COUNTY, NEW MEXICO
EXHIBIT A'

33°45' 104°22'30" 490,000 FEET 559 560 561 562
R 25 E R 26 E
20'

UNITED PETROLEUM CORP.

Exhibit C

Reserve Pit
bottom to be at
ground level to
1 ft.



ROAD