

RECEIVED BY

MAY 20 1985
UNITED STATES
DEPARTMENT OF THE INTERIOR
GEOLOGICAL SURVEY
ARTESIA, OFFICENM OIL CONS. COM. - ARTESIA
SUBMITTER'S APPLICATION
Drawer DD (Other instructions on reverse side)
Artesia, NM 88210Form approved.
Budget Bureau No. 42-R1425.

30-005-62272

APPLICATION FOR PERMIT TO DRILL, DEEPEN, OR PLUG BACK

1a. TYPE OF WORK

DRILL ☒DEEPEN ☐PLUG BACK ☐

b. TYPE OF WELL

OIL
WELL ☐GAS
WELL ☒

OTHER

SINGLE
ZONE ☐MULTIPLE
ZONE ☐

2. NAME OF OPERATOR

Yates Petroleum Corporation

3. ADDRESS OF OPERATOR

207 South Fourth Street - Artesia, NM 88210

4. LOCATION OF WELL (Report location clearly and in accordance with any State requirements.)*

At surface

1980' FSL & 1980' FWL of Sec. 10-5S-23E

At proposed prod. zone

Same

14. DISTANCE IN MILES AND DIRECTION FROM NEAREST TOWN OR POST OFFICE*

Approximately 34 miles north of Roswell, New Mexico

15. DISTANCE FROM PROPOSED*

LOCATION TO NEAREST

PROPERTY OR LEASE LINE, FT.

(Also to nearest drilg. unit line, if any)

1980'

18. DISTANCE FROM PROPOSED LOCATION*

TO NEAREST WELL, DRILLING, COMPLETED,
OR APPLIED FOR, ON THIS LEASE, FT.

16. NO. OF ACRES IN LEASE

2535.3

19. PROPOSED DEPTH

4000'

17. NO. OF ACRES ASSIGNED
TO THIS WELL

160

20. ROTARY OR CABLE TOOLS

Rotary

21. ELEVATIONS (Show whether DF, RT, GR, etc.)

4303.6' GR

22. APPROX. DATE WORK WILL START*

ASAP

23.

PROPOSED CASING AND CEMENTING PROGRAM

SIZE OF HOLE	SIZE OF CASING	WEIGHT PER FOOT	SETTING DEPTH	QUANTITY OF CEMENT
14-3/4"	10-3/4"	40.5# J-55	850'	750 sacks - circulate
7-7/8"	4-1/2"	9.5#	TD	350 sacks

We propose to drill and test the Abo and intermediate formations. Approximately 850' of surface casing will be set and cement circulated to shut off gravel and cavings. If needed for lost circulations 8-5/8" intermediate casing will be run to 1500' and cemented with enough cement calculated to tie back into the surface casing. A Temperature Survey will be run to determine the cement top. If commercial, production casing will be run and cemented with adequate cover, perforated and stimulated as needed for production.

MUD PROGRAM: FW gel/LCM to 850'; brine to 3500'; brine & KCL water to TD

BOP PROGRAM: BOP's will be installed at the offset and tested daily.

GAS NOT DEDICATED

IN ABOVE SPACE DESCRIBE PROPOSED PROGRAM: If proposal is to deepen or plug back, give data on present productive zone and proposed new productive zone. If proposal is to drill or deepen directionally, give pertinent data on subsurface locations and measured and true vertical depths. Give blowout preventer program, if any.

24.

SIGNED

Clifton May

TITLE

Regulatory Agent

DATE

May 13, 1985

(This space for Federal or State office use)

PERMIT NO.

APPROVAL DATE

APPROVED BY

S/Levi Deike, Acting

TITLE

Area Manager

DATE

5-28-85

CONDITIONS OF APPROVAL, IF ANY:

Posted IDI
API & NL
6-7-85

**NEW MEXICO OIL CONSERVATION COMMISSION
WELL LOCATION AND ACREAGE DEDICATION PLAT**

Form C-102
Supersedes C-128
Effective 1-1-65

All distances must be from the outer boundaries of the Section

Operator Yates Petroleum Corporation			Lease Bajada "ACM" Federal		Well No. 1
Unit Letter K	Section 10	Township 5S	Range 23E	County Chaves	

Actual Footage Location of Well:

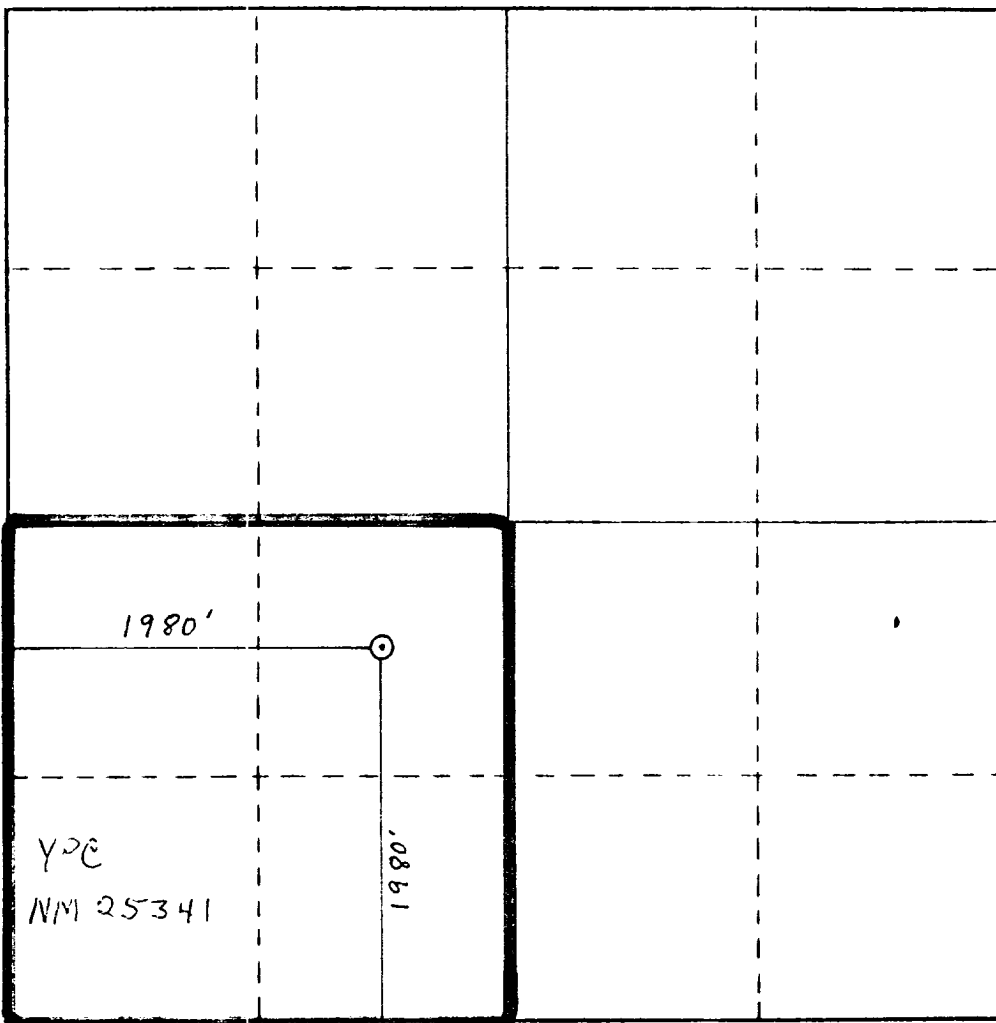
1980 feet from the South line and	1980 feet from the West line
Ground Level Elev. 4303.6' GR	Producing Formation Abc
	Dedicated Acreage: 160 Acres

1. Outline the acreage dedicated to the subject well by colored pencil or hatchure marks on the plat below.
2. If more than one lease is dedicated to the well, outline each and identify the ownership thereof (both as to working interest and royalty).
3. If more than one lease of different ownership is dedicated to the well, have the interests of all owners been consolidated by communitization, unitization, force-pooling, etc?

☐ Yes ☒ No If answer is "yes," type of consolidation _____

If answer is "no," list the owners and tract descriptions which have actually been consolidated. (Use reverse side of this form if necessary.) _____

No allowable will be assigned to the well until all interests have been consolidated (by communitization, unitization, forced-pooling, or otherwise) or until a non-standard unit, eliminating such interests, has been approved by the Commission.



CERTIFICATION

I hereby certify that the information contained herein is true and complete to the best of my knowledge and belief.

Clifton May

Name

Clifton May

Position

Regulatory Agent

Company

Yates Petroleum Corporation

Date

May 13, 1985

I hereby certify that the well location shown on this plat was plotted from field notes of actual surveys made by me or under my supervision, and that the same is true and correct to the best of my knowledge and belief.

May 9, 1985

Date Surveyed

Registered Professional Engineer and Land Surveyor

Certificate No. 3640

REGISTERED LAND SURVEYOR

NEW MEXICO

REGISTERED LAND SURVEYOR

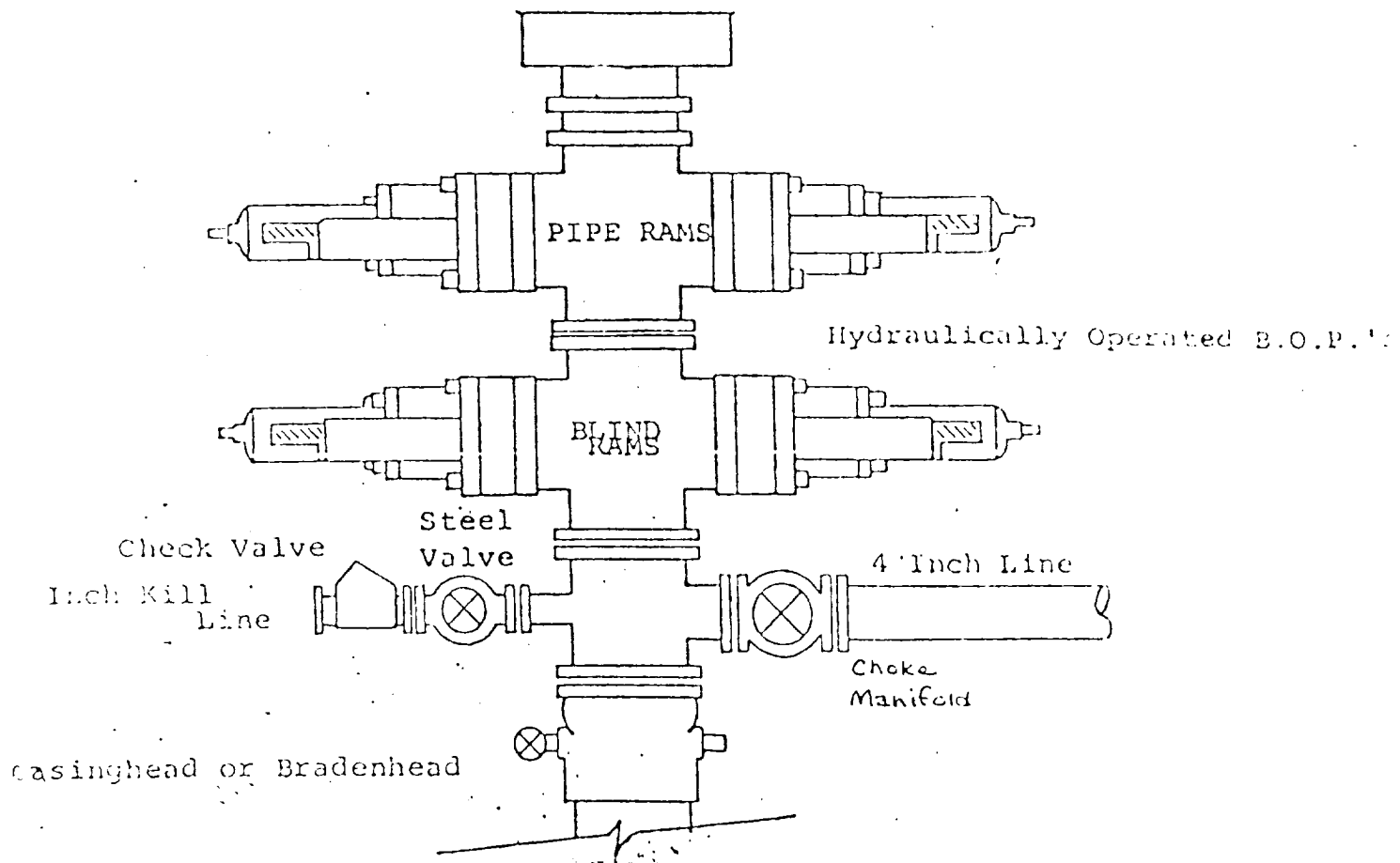
REGISTERED LAND SURVEYOR

REGISTERED LAND SURVEYOR

EXHIBIT B

BDP DIAGRAM

RATED 3000[#]



YATES PETROLEUM CORPORATION
Bajada "ACM" Federal #1
1980' FSL & 1980' FWL of
Section 10-T5S-R23E
Chaves County, New Mexico

In conjunction with Form 9-331C, Application for Permit to Drill subject well, Yates Petroleum Company submits the following ten items of pertinent information in accordance with BLM requirements.

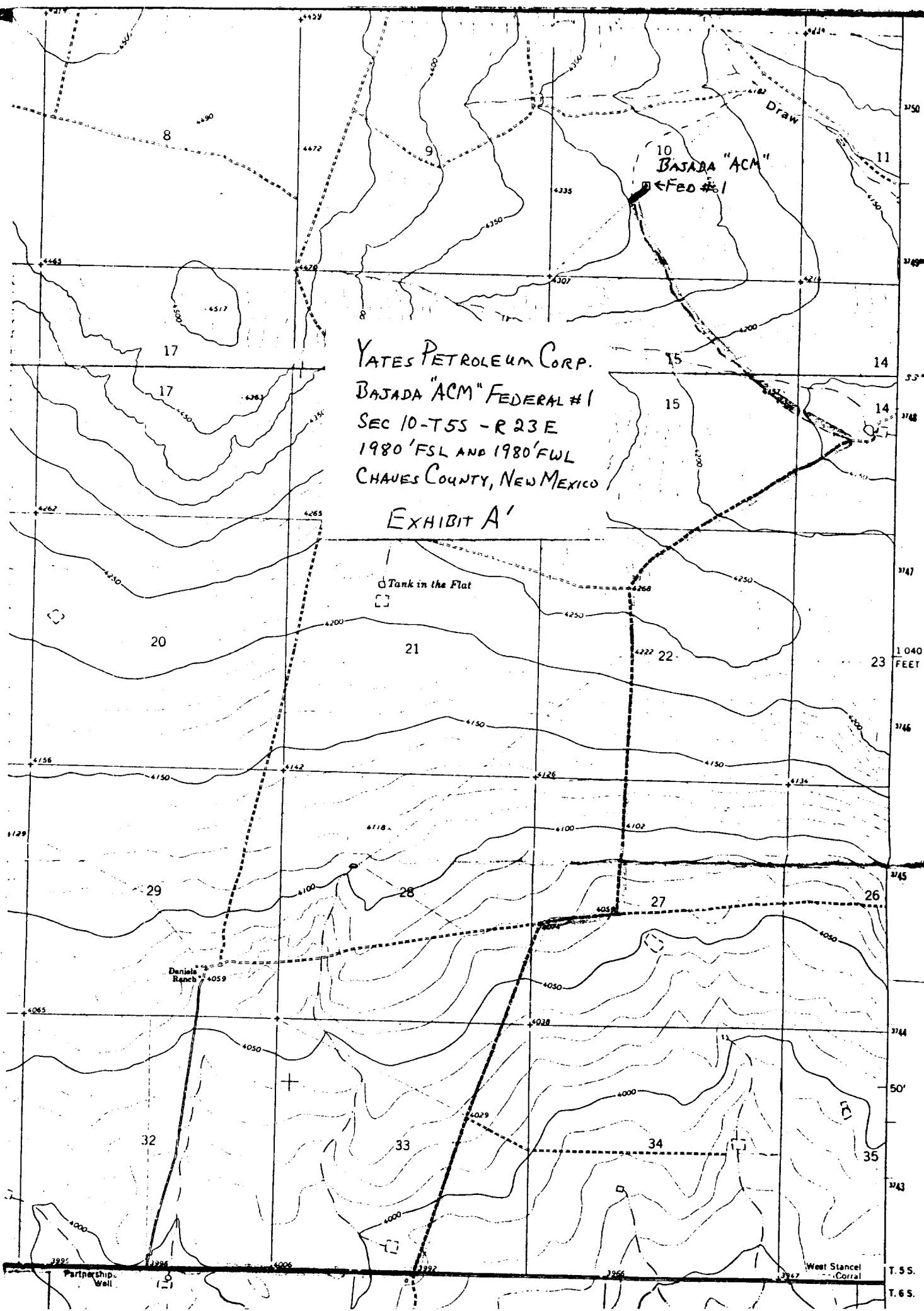
1. The geologic surface formation is sandy alluvium.
2. The estimated tops of geologic markers are as follows:

San Andres	322'
Glorieta	1344'
Yeso	1402'
Abo	3438'
TD	4000'
3. The estimated depths at which anticipated water, oil or gas formations are expected to be encountered:

Water: 200-300'

Oil or Gas: Abo 3450'
4. Proposed Casing Program: See Form 9-331C.
5. Pressure Control Equipment: See Form 9-331C.
6. Mud Program: See Form 9-331C.
7. Auxiliary Equipment: Kelly Cock; pit level indicators and flow sensor equipment; sub with full-opening valve on floor, drill pipe connection.
8. Testing, Logging and Coring Program:

Samples: 10' out from under surface casing to TD.
DST's: As warranted.
Coring: None
Logging: CNL-FDC from TD to casing with GR-CNL to surface; DLL from TD to casing.
9. No abnormal pressures or temperatures are anticipated.
10. Anticipated starting date: As soon as possible after approval.



YATES PETROLEUM CORP.
BAJADA "ACM" FEDERAL #1
SEC 10-T5S - R 23 E
1980' FSL AND 1980' FWL
CHAVES COUNTY, NEW MEXICO

EXHIBIT A'

Tank in the Flat

Daniels Ranch

Partnership Well

West Stancel Corral

T. 5 S.

T. 6 S.

YATES PETROLEUM CORP.

Exhibit C

